

It's Your Village, Have Your Say

ON BROOMFIELD'S FUTURE

With your help, Broomfield's housing allocation has been cut in half. But there's still more to do by **11th May** deadline.

Please help our Parish Council to:



Drop in at the Village Hall (behind the Angel) on **Saturday 6th May, any time between 2 – 6pm** for a quick guide to what it means for Broomfield

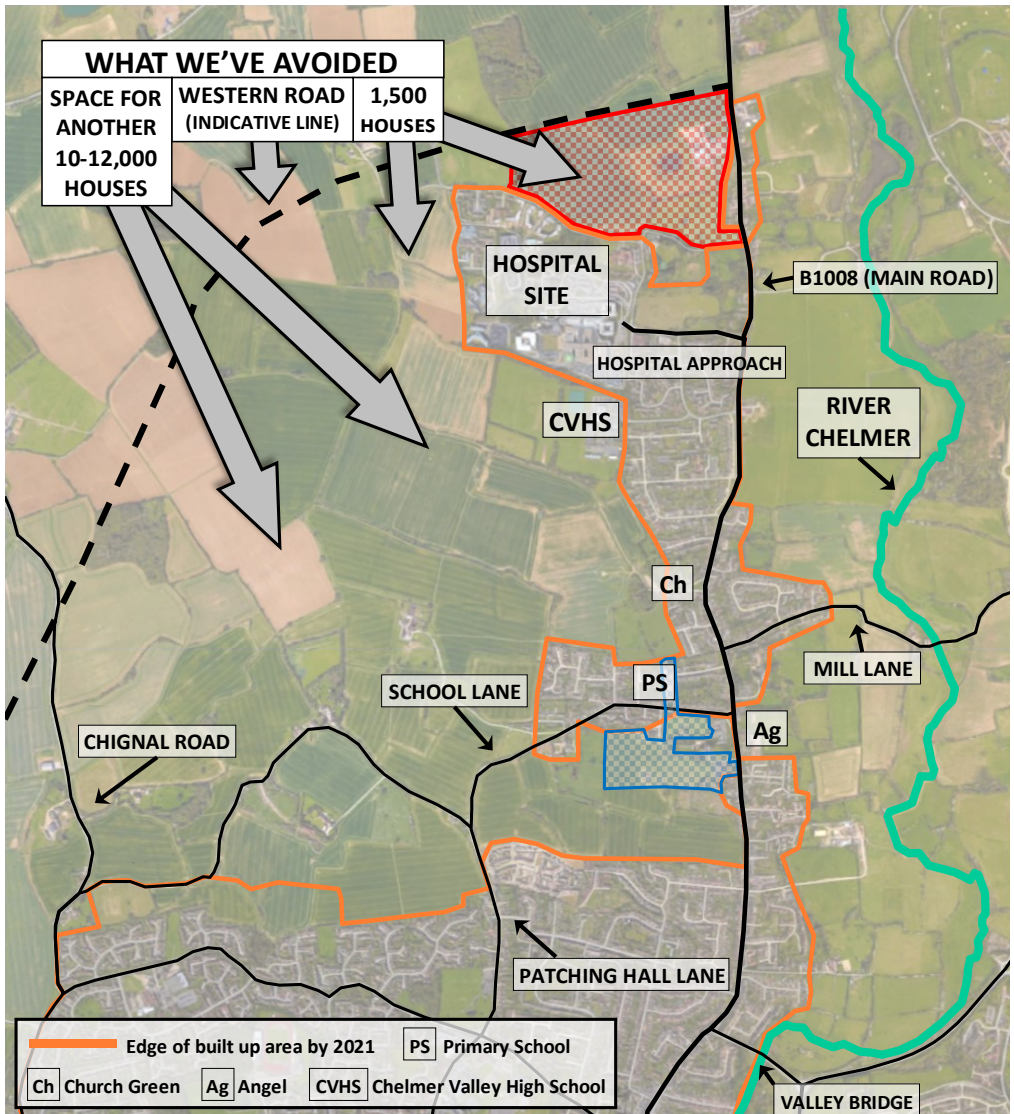
Visit Chelmsford Council's planning website or the Civic Centre or Broomfield Library to get full details, including how to comment on their plans

SEE INSIDE FOR MORE INFORMATION



YOUR SUPPORT HAS REALLY MADE A DIFFERENCE

A year ago, Broomfield faced 1,500 extra houses and a line on a map for a Western Road. Almost certainly, even more housing would have followed to 'fill-in' between the village and the Road line.



Working with neighbouring parish councils, we persuaded Chelmsford to listen. They've now taken out the Western Road line idea and cut the planned new Broomfield housing from 1,500 to 800.

BUT THERE'S MORE TO DO

- 800 houses are still planned for 'north of Broomfield' (the area shaded red on the map opposite)
- This should include a new access road in to the Hospital site, but a development of this size will worsen congestion going into the city centre
- The massive amount of development planned north of Chelmsford (Great Leighs and Little Waltham) will cause huge traffic problems around the Broomfield area, unless the North East Bypass can be definitely guaranteed
- In addition, the 200+ houses around Broomfield Place (already in current plans) are going to be carried forward till after 2021 (the area shaded blue on the map opposite)
- That development is supposed to include an expanded new primary school, but after nearly 10 years we're still fighting for it!

WE WANT CHELMSFORD CITY COUNCIL TO

- Reduce the amount of housing planned for Broomfield because of the effect on traffic
- Relocate more development to the A12 and A130 south corridor and near the new Beaulieu Park railway station, where road/rail infrastructure is better
- Ensure that new cycleways into Chelmsford actually happen
- Ensure that Broomfield's new primary school is actually built, as promised in current plans

HOW YOU CAN KEEP SAVING BROOMFIELD

Please respond to Chelmsford's 'Preferred Option' Consultation, by

Thursday 11th May

View Online: <https://www.chelmsford.gov.uk/planning-and-building-control/planning-policy-and-new-local-plan/new-local-plan>

Get a comment form online: www.chelmsford.gov.uk/preferredoptions
by phone (01245) 606330 **or email** planning.policy@chelmsford.gov.uk

Return the form by email: planning.policy@chelmsford.gov.uk **by post:**
Planning Policy, Chelmsford City Council, Civic Centre, Duke Street, Chelmsford, CM1 1JE **or hand in** at Civic Centre reception.

Only answer the questions you want to, with your name etc. If you just want to comment on Broomfield sites, go to Question 6, Growth Area 2.

HOW WE CAN HELP YOU

Planning documents aren't light reading! If it looks a bit daunting, **drop in to Broomfield Village Hall (behind the Angel) on Sat 6 May, 2 – 6pm.** We'll try and explain the key points for Broomfield. There will be comment forms and a quiet 'neutral' area if you'd like to write your comments there and then (though we can't tell you what to say and wouldn't want to).



Also drop in your **Neighbourhood Plan Questionnaire** if you haven't already done so. The Neighbourhood Plan will help to make sure any development is in line with local people's views, as far as possible. The return deadline has been extended to **6th May**. Spares will be available if you've lost yours!

Published by Broomfield Parish Council