

Broomfield **TIMES**

Issue 53 | Spring 2018

News & events from your Parish Council





SUNDAY LUNCH?

2 Courses £19.95

3 Courses £22.95

Includes Coffee/Tea & Chocolates

- Fresh homemade dishes
- Locally sourced ingredients
- Beautiful restaurant views

BOOK NOW: 01245 440 005



Channels

Pratts Farm Lane East
Little Waltham
Chelmsford CM3 3PT

www.channelsestate.co.uk



Broomfield **TIMES**

Planning features heavily in this first edition of Broomfield Times for 2018. The final version of Chelmsford City Council's local plan is currently open for consultation. You can read the Planning Committee update on this and what it might mean for Broomfield on page 18. We urge all residents to comment, whatever their views, particularly as comments from the previous consultation will not automatically be reconsidered. The Parish Council will be holding a drop in event on the 8th March (see page 21 for details) where councillors will be on hand to answer questions. You can also find some coverage of the Chelmsford City Growth Package on page 16 which aims to address traffic issues in and around the City. Last but not least preparations are progressing for the Village Fun and Games day. We're still looking for volunteers to help on the day so if you can spare an hour or two please let the Parish Office know.

Selina Matthews

Front cover – Daffy Wood, unknown photographer

**TO ADVERTISE
PLEASE CALL 01843 269513**

Published by
Community Ad Web Ltd
01843 834160

email info@communityad.co.uk
web www.communityad.co.uk



Supporting the
REBUILD OF BRITAIN



The views expressed in any published content are solely those of the contributors. The Publishers and Broomfield Parish Council accept no responsibility for the accuracy of any information contained in the publication. The contents of this magazine including images may not be copied, reproduced, distributed, downloaded or displayed in any form or by any means without the prior written permission of Broomfield Parish Council and/or Community Ad Web Ltd. Unless otherwise specified, the authors of the literary and artistic works in the pages in this magazine have asserted their moral right pursuant to Section 77 of the Copyright Designs and Patents Act 1988 to be identified as the author of those works. The Publishers reserve the right not to publish a submission or part of a submission that they consider defamatory or otherwise inappropriate for publication.

We pride ourselves on our professional,
friendly and reliable taxi service
24 hours a day, 7 days a week



www.farewaytaxis.co.uk



For quicker and easier
bookings why not try
our new app!



**LKG Daughters
PLUMBING
& HEATING
LTD**



*From a tap
to a full bathroom installation*



01245 4781 11
01245 346895

Local family business
established 1997



City &
Guilds
Qualified

Boiler Renewals & Repairs
Central Heating & Repairs
Bathroom Suite Installations
Pumps & Port Valves
Taps, Ball Valves, etc
All Work Guaranteed
Female & Male Engineers

www.lkgdaughtersplumbing.co.uk

Broomfield Contacts

Parish Councillors

John Barnes *Chairman*

Ros Mercer *Vice Chairman*

Geof Garwood *Vice Chairman*

Tim Tranquada *Civic Amenities*

Trevor Jones *Finance & General Purposes, Village Hall Charity*

John Blake *Planning Committee*

David Howell | Angela Thomson | Sue Hubble

Wendy Daden | Selina Matthews

Karen Charlton | Les Steed

Mike Letch *Clerk*

Karen Hurrell *Assistant Clerk (Planning)*

Wendy Martin *Assistant Clerk (Civic Amenities)*

Parish Office, 158 Main Road, Broomfield, CM1 7AH

☎ 01245 441660 ✉ clerk@broomfieldessex.co.uk

Parish Councillors can be contacted through the Parish Office Mon, Weds & Fri 10.30am - 12.30pm (answer machine available out of office hours)

City Councillors

Barry Knight ☎ 01245 420045

✉ gbr.knight@chelmsford.gov.uk

Sandra Pontin ☎ 01245 440447

✉ sandra.pontin@chelmsford.gov.uk

James Raven ☎ 07889 650339

✉ james.raven@chelmsford.gov.uk

County Councillor

John Aldridge 33 East View, Writtle, CM1 3NN

☎ 01245 421524 ✉ cllr.john.aldridge@essex.gov.uk

MP

Kemi Badenoch, Conservative

www.kemibadenoch.org.uk

Surgery Dates 2018

Friday 9th March 2018 | 3.30pm – 6.00pm

Saffron Walden, The Old Armoury, CB10 1JN

For an appointment, please send an email with your name and address to: kemi.badenoch.mp@parliament.uk.

Street Stalls 2018

Saturday 24th March | 10:00am – 13:00pm

9 Lower Street, Stansted, CM24 8LY

No appointment is necessary, please drop by and talk with Kemi about any issue you may wish to raise.

Community Policing

Contact for PCSOs:

Non-emergency number 101

Or via website www.essex.police.uk

Editorial Committee

Cllr. Selina Matthews *Editor*

Cllr. John Barnes

Cllr. Geof Garwood

Cllr. Daden

Cllr. Mercer

Whilst Broomfield Times is supported by the Broomfield Parish Council, the views expressed within it are not necessarily those of the Council. Please note that the Parish Council do not recommend or vet advertisers.

Contributions

Contributions to future editions are welcome, please email

✉ selina.matthews@tiscali.co.uk

or send hard copy to the Editor c/o

The Parish Office, 158 Main Road, Broomfield, CM1 7AH

☎ 01245 441660

Articles accompanied by photographs are particularly welcome. Please send either professional prints or email full-size JPG files.

Copy Dates

- Copy for the Summer issue to be sent by 20 April.

General Notes

- Free dog waste bags, graffiti removal kits plus further supplies of plastic bottle bags and cardboard and paper sacks are available from the Parish Office.
- Please refer any play area problems or incidents to the Parish Office.

COMPUTER PROBLEMS?



IS YOUR COMPUTER RUNNING SLOW, CRASHING OR JUST GIVING YOU PROBLEMS?

Then give Micromend a call for free advice

No call-out fee · No fix, no fee

Microsoft
CERTIFIED
IT Professional

YOUR LOCAL FRIENDLY SPECIALIST FOR

- All PCs and laptops
- Apple Macintosh
- Configuring iPads, iPhones and Android mobiles,
- Internet problems
- Virus removal
- Upgrades and replacement of your old machine
- Install custom-built Windows 7, 8 and 10 PCs
- We can advise on child safety
- We are CRB Registered

For more information on our services visit
www.micro-mend.co.uk | email glen@micro-mend.co.uk
mobile 07788 925085 | office 01245 463330

SARAH'S HAIR

+ 8 YEARS EXPERIENCE
+ MOBILE AND HOME BASED
+ FULLY INSURED
+ ALL ASPECTS OF HAIR

07530517223

SARAHREADY@ICLOUD.COM

£5 OFF WHEN YOU QUOTE
'2018' AT TIME OF BOOKING

RGW Installations LTD

Plumbing & heating services
Boiler installations & repairs
General plumbing
Bathrooms



Please call today on
07758 252707 or 01245 231113

Jim's Décor & Maintenance

Pre & Post Tenancy Preparation
Renovation, Repairs, Covings, Tiling
Appliance Installation & Repair

Traditional & Modern Décor
Wall Lining & Paper Hanging
Carpentry, Flat Pack, Electrical

Now Available Locally !

Liability Insurance Backed Over 30 yrs Experience

Tel. 07802 245129

jimsdecor@hotmail.com

website: jimsdecor.co.uk

FREE QUOTATIONS (no obligation)

C.P. Plastering & Decorating
Quality Decorating & Design

Contact Chris on
07756 244085

plasterandpaint@hotmail.co.uk



In Council

The Parish Council has held two meetings since the last edition of the Broomfield Times. The meetings covered various procedural matters and updates to ongoing issues. A summary is shown below.

Broomfield Parish Council Precept

The overall Parish budget for 2018/19 was agreed at £129,423 and the precept was set at £117,840. The good news is that this leaves your contribution unchanged at £55.46 for a band D house, or just over £1 a week. However, the total amount raised has gone up by £8,600 simply because there are more houses contributing. Some of the extra money has gone to absorb cost of living increases and some has gone towards increasing the amount of grant funding money available to the community.

Chelmsford Development Plan

Please see page 18 for a more detailed update on this plan.

Erick Avenue

The work on the crossing has finally been completed with the installation of Zebra lights which stand out more than the previous lights. However there remains a problem with the underground power supplies and the relocation of the wooden pole. We would have much preferred a traffic light controlled crossing but despite considerable pressure over a long period, Essex County Council could not be persuaded even though they have accepted that the crossing is dangerous.



Neighbourhood Plan

The results of the Village Survey have now been published and make very interesting reading. You can find a copy of the report at, <http://www.essexinfo.net/broomfield-neighbourhood-plan-2/results-of-surveys/>. See page 8 for information about a second open event in May to present the work completed so far.

Defibrillator

The Council have been looking into installing a defibrillator in the village. We agreed that we should push forward with this and The Clerk is now obtaining detailed prices and investigating what grants might be available. It is most likely that the unit will be sited at the Village Hall.

The Woodland Trust Tree Charter

It was proposed that the Council should support The Tree Charter, <https://treecharter.uk/home.html>, being promoted by The Woodland Trust. We all agreed that this was an important initiative and agreed to support it. If you are interested please follow the link and sign up individually.

Allotment Site Trading Centre

Discussions are proceeding with Broomfield Cottage Gardeners regarding their use of the Barn at the allotment site. If we can reach a mutually acceptable agreement we believe that we may be able to generate more income from this asset to support village amenities.

Councils 125 year anniversary

Councillor Tim Tranquada has produced a discussion paper about the possibility of running a celebratory event in 2019 to mark the Council's 125 anniversary. This may be a social event or it could take the form of an exhibition with stands, stalls and activities to support the extraordinary change that the Village has seen over the last 125 years. We would like to gauge interest from villagers to join a team to design and organise such an event. If you are interested in taking part, at this stage with no obligation, or can help in some other way, please contact the Clerk Mike Letch or Councillor Tim Tranquada.

War memorial

Following recent correspondence with the Royal British Legion, it has been noted that the war memorial is not insured or formally maintained. It was agreed that the Parish Council will adopt the war memorial for maintenance, care and protection as specified in law.



30% OFF a wide range of beauty treatments
with this ad | valid Mon-Fri | terms & conditions apply

THE BEAUTY YARD

www.thebeautyyard.co.uk

324 Broomfield Road, Chelmsford
01245 440582

Sienna x Mink

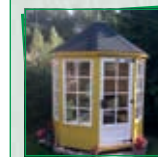


Inspection & Testing
Consumer Unit Upgrades
Rewires, Extensions
Intruder Alarms
Showers, Cookers, Sockets
Security
Outside Lighting & Power
Fire Alarms
Lighting
PAT Testing
Maintenance
Fault Finding

01245 905215
info@xpediaelectrical.co.uk
www.xpediaelectrical.co.uk

Honest & reliable,
No obligation quotes
Fully insured
All work guaranteed & installed to current regulations

POULTON PORTABLES 
Manufacturing quality timber buildings since 1951



Summer Houses
Garages & Stables
Sheds
Garden Offices & Studios
Beach Huts



All of our buildings are unique...
We will design a bespoke building from scratch or we can customise any building from our range to suit your individual needs



01245 222550
essex@poultons.co.uk
for more information visit
www.poultons.co.uk

It's Your Village, Have Your Say
ON BROOMFIELD'S FUTURE



BROOMFIELD NEIGHBOURHOOD PLAN

THE NEIGHBOURHOOD PLAN STEERING GROUP INVITE YOU

TO DROP IN BETWEEN 7.30 PM – 9.30 PM

ON WEDNESDAY 23RD MAY 2018

IN BROOMFIELD VILLAGE HALL

YOUR VILLAGE HAS SPOKEN!

COME & VIEW THE RESULTS FROM THE SURVEY &
HOW THE NEIGHBOURHOOD PLAN WILL HELP SHAPE

BROOMFIELD IN THE NEXT 20 YEARS

WHAT HAPPENS NEXT?

ALL WELCOME



South Hanningfield Tree Surgeons
Local, Professional, Affordable

lukeharlow1@btinternet.com - Email
01245 400054 - Office
07393 634016 - Mobile

Here at South Hanningfield Tree Surgeons, we pride ourselves with being the best; offering professional services in all areas of tree and landscaping practices.

With our team of trained, experienced Arborists, we can deliver the very best in looking after your treasured grounds, estates and gardens.

We offer a comprehensive range of services and management including -

- Trimming, pruning, pollarding and all crown reduction work.
- Hedge trimming, lowering and removal.
- Precision tree felling and stump removal.
- Contract work for landscaping and garden maintenance.
- Veteran and Ancient tree management.
- Woodland management.
- Tree and hedge planting with complete aftercare.
- Seasoned split logs and woodchip for sale.
- Fencing including direct replacement and new.
- And much, much more...

We are fully insured with over £15,000,000 in liability insurance including Public, Employers and Indemnity.

Our teams are trained to the highest standard for your peace of mind. All documents are available upon request.

So call us today for a free quote on all your tree, hedge and garden needs. We look forward to hearing from you...

VISIT www.change.org
PLEASE SIGN
STOP CHELMSFORD'S CONGESTION

There is an alternative to building on the already stretched infrastructure that Chelmsford City Council have discarded. We should develop at locations next to the A12; however, CCC say "the A12 can't cope!" This is NOT acceptable. CCC evidence states majority of Chelmsford traffic uses the A12; a bottle neck IS being created at Boreham exactly where the N/E bypass will direct traffic. Therefore the A12 MUST be made FIT FOR PURPOSE, details on the petition site change.org. Act now or enjoy the future traffic jams! Help share and spread the word.



Www.WendyDaden.co.uk

From the County Council

The ECC Budget 2018/19

Essex County Council's £1.8 billion spending plan for 2018/19 has been approved resulting in an overall increase of 4.99% in Council Tax. It will rise by 2% through the Government's Social Care precept, which will be ring-fenced for adult social care, and 2.99% to support the delivery of vital services such as highways, public transport, libraries and recycling.

Other details of the Budget include investing £14 million in Superfast Broadband, £126 million into major road schemes and maintenance, plus an extra £3 million for pothole and footpath repairs. The Budget also provides £87 million for mainstream schools and £17 million for special schools to create an extra 2,750 school places.

Essex Youth Offending Service to help the homeless

Young people working with Essex Youth Offending Service (YOS) have been supporting Chelmsford-based rucksack project, "Cool to be Kind", with its efforts to keep homeless people warm and dry this

winter. The young people, who are carrying out repair work with the YOS, have collected, sorted and prepared items donated by the public, including warm clothes, sleeping bags and non-perishable food. The group packed a total of 177 complete rucksacks ready to be delivered to people living on the streets.

Essex YOS work with many young people aged 10-18 who carry out 'reparation' as part of their court order. The Service ensures all its reparation work is restorative and involves giving something back to the local community. The YOS is always looking to contribute to projects to help vulnerable individuals across Essex. If you have an idea for the team, please contact Karen Sinclair on 07921 912509 or karen.sinclair@essex.gov.uk.

(Information about "Cool to be Kind" is on <https://www.facebook.com/TheRucksackProjectChelmsford/>)

If you have any problems about County Council matters please let me know on 01245 4121524 or email cllr.john.aldridge@essex.gov.uk.

My blog can be found at <http://dnn.essex.gov.uk/chairmanblog/Home.aspx>

John Aldridge

ADVERTORIAL

Has Your Double Glazing Steamed Up?

Established for over a decade Cloudy2Clear windows have become a leading company for glass replacement. Issues with double glazing can often be gradual and may only be noticed during a clear sunny day or during the winter. A failed glass unit may no longer provide you with the protection you need or be energy efficient. Why not spend a few minutes checking your home to see if you have any failed double glazing? If you act now you can avoid these problems.

Now, you may think you need to replace the

whole window including the frames and all the hardware, however Cloudy2Clear have come up with a simple and cost saving solution... Just replace the glass!!

If you see condensation in your windows just visit our website or give us a call on 0800 61 21 118. We will send out our highly experienced engineers for a free no obligation quote. A Cloudy2Clear quote takes on average no longer than 20 minutes. Once the quote is completed, we will sit down with you and explain the problem and tell you how we can fix it.

With years of experience Cloudy2Clear have a wealth of knowledge and are recognised as a Which Trusted Trader, plus our work is backed by an industry leading 25 year guarantee.

Cloudy2Clear also replace faulty locks handles and hinges on all windows and doors.

Your friendly local Cloudy2Clear specialist is Chris Miller and he services the Broomfield & Chelmsford areas.

So, if your windows are steamed up, broken or damaged give Chris a call for a free quotation on 0800 61 21 118.



Cloudy2Clear Windows... Service With A Smile!

Cloudy2Clear Are A...



Which? Trusted Trader

All Glazing Backed By Our

25 YEAR GUARANTEE



Priority Freephone
0800 61 21 118
www.cloudy2clear.com

Broken Or Damaged Windows? Faulty Locks, Handles, Hinges?

Village Amenities Committee

Village Greens

Our Telephone Box was decked out with Christmas Lights and a Christmas Tree over the Christmas holiday. Many people commented on the effect it had by brightening their mood and bringing a smile to their face. We hope to repeat the process next Christmas and, in addition, we hope to display some of the Christmas cards for 2018, yet to be designed, by the pupils at the Broomfield Primary School

Extra daffodils have been planted behind the Telephone Box and in front of Madelayne Court and these should provide a very colourful display in the spring.



Village Pond

We met with a representative of 'The Conservation Volunteers' to discuss the maintenance needs of the Village Pond. It was decided to cut back some of the surrounding vegetation and to monitor the growing reed bed so that it does not eventually take over the whole pond. The reed bed will need to be cut back in the next 2 years.

Allotments

If you would like to put your name down on the waiting list for a half or quarter plot on the allotment site then please contact the Parish Office.

Centenary Wood

Yellow rattle seed has been sown in some areas of Centenary Wood to provide attractive ground cover; this is an indigenous plant to these shores, evidently, but whether it was here before the North Sea extended (thus creating the English Channel) and cut us off from the rest of Europe, is debateable.

Reminder: The Centenary Wood working party of volunteers meets on the 1st Tuesday morning of each month to carry out maintenance tasks in the Wood. These regular tasks involve grass cutting; pruning of the passageways between the area of shrubs; weeding the wild flower beds; replenishing wood chippings around the benches and removing brambles etc growing in the wrong place. We meet at 10:00 am on the allotment site to collect our equipment.

Parish Pathways Partnership (P3):

Reminder: The P3 group of volunteers meet on the 3rd Tuesday morning of each month to walk specified Parish Public Footpaths and to undertake a 'monitoring' of those footpaths in order to carry out remedial repairs/maintenance where necessary. We meet at 10:00 am outside St Mary's Church. Other walks can be undertaken with The Broomfield Footpath Society whose walks extend beyond our Parish to interesting places. See page 23 for more details.

Tim Tranquada

Performing Arts Schools for 3 - 21 Year Olds

ACADEMY

Theatre School & Agency **ARTS**

Fulfill Your Potential...

SING - DANCE - ACT - PERFORM

Chelmsford & Epping
01245-422595

CHELMSFORD BRANCH	EPPING BRANCH
THURSDAYS	TUESDAYS
SATURDAYS 11:00-12:15	SATURDAYS
<small>(Chelmsford County High School)</small>	<small>(Epping Methodist Church) (Epping St Johns School)</small>

www.academyarts.co.uk

tel 01245 257639
mob 07770 890126

Steve Cousins Roofing Ltd

Slating · Tiling
Leadwork · Guttering
and all general repairs

P SMITH

PLUMBING & HEATING

- BOILER SERVICES
- BOILER BREAKDOWNS
- FULL INSTALLATIONS
- SYSTEM UPGRADES
- PART L ENERGY EFFICIENT
- UNDER FLOOR HEATING
- LANDLORD REPORTS

07801 817443
01245 763632

9 Redmayne Drive
Chelmsford CM2 9XF
smith-paul104@sky.com
www.psmithplumbingandheating.co.uk

Pleshey Tree Services

Tree Surgeons & Arborists

Pruning & Shaping • Felling & Removing • Planting & Advice

Friendly, professional service • Free quotations & advice

www.plesheytreeservices.com
tomcrees@plesheytreeservices.co.uk | **01245 362988**

NPTC qualified | Council approved | Work compliant to BS3998 & BS5837 | Fully insured

www.flatpackready.co.uk

John Nicholson
Carpenter
Painting & Decorating
Handyman
Flat Pack Assembly
Door Hung
And More...

07597 851000
flatpackready@gmail.com

BASSIST WANTED



Local band looking for a Bass Player. We are a cover band covering Music from the 60s through to current. There are three of us that do this for fun so no worries about it being too much of a commitment! We gig a few times a year including fundraising events, and have supported Broomfield Village Hall Charity. Would like to play more and rehearse every now and then so looking for someone who wants to come join and make some music!

Call James
on 07973 221731

or email James.s.breeze@gmail.com

Check out our facebook page:
www.facebook.com/4LeafCover/

D.S. EAGLE

High-class family butcher

Prime quality beef, pork, lamb and poultry plus home-made sausages and burgers



ALL ENGLISH MEAT

We specialise in home-cured gammon hams and bacon, produced on the premises in the traditional way. Come and visit our shop and meet our qualified, experienced and friendly staff for helpful advice - you'll be very welcome.

01245 420516 07810 712765
9 Wellfield, Writtle, Chelmsford, CM1 3LF

www.eaglebutchers.co.uk



Andy's Aerials

Essex CM1 **Your local aerial installer**

- » New aerial & satellite installations
- » Aerial & satellite repairs
- » Extra TV points
- » TV wall mounting
- » System design & install
- » Freesat & YouView installations

Family-run business with over 20 years of experience

Trading Standards
Approved Aerial Installer

Quality workmanship
at sensible prices



digital 
Approved Member

Freephone **0800 77 97 047**
Mobile **07916 305 977**
Mobile Local Rate **0333 900 333 2**
Email andy@andysaerials.com
www.andysaerials.com

BROOMFIELD VILLAGE FUN AND GAMES DAY
SUNDAY 8th JULY 2018
11:30 - 3:30
Broomfield Village Hall and David Smith Field.

FAIRGROUND RIDES

DONKEY RIDES

REFRESHMENTS

BOUNCY CASTLE

CRAFT TABLES

MEET THE MEERKATS

AND MANY MORE STALLS



Chelmsford City Growth Package

Chelmsford is growing and developing and with this growth, there is an increase in demand for travel on our already busy road network. At the moment, the road network has only 4% capacity left at peak times. This has initiated The Chelmsford Growth Package consultation.

We will continue to keep you informed when we hear more but for now the following transport improvements in our area have been included.

1. Essex Regiment Way Pegasus (signalised) Crossing
The map below shows the location of the proposed crossing.
2. Great Waltham to City Centre Cycle Route
This proposed cycle route will connect Great Waltham with Chelmsford city centre via the Broomfield Road corridor proposals and will link to other existing and proposed cycle routes along its length; improving cycling into and around the north and west of the city. The cycle route will be signed on-road from Broomfield Road towards Goulton Road and link to Broomfield Hospital. See map opposite.

For more information visit www.essex.gov.uk/chelmsfordtransport - navigate to public consultation documents – Summer 2017

Wendy Daden



Chelmsford City Council: Chelmsford Local Plan – Have Your Say

The final version of Chelmsford City Council's new Local Plan – called the Pre-Submission – will be open for consultation from 31 January to 14 March 2018.

The Local Plan identifies the number and locations for houses, jobs and businesses and local facilities to support growth to 2036, and beyond. It also includes planning policies which will be used to determine planning applications.

Does the Pre-Submission Local Plan consultation document identify new development around Broomfield Parish?

The consultation document proposes allocating land north Broomfield (part of which is in the Little Waltham Parish) for around 450 new homes and supporting infrastructure including a neighbourhood centre and early years/childcare nursery. This is called Strategic Growth Site 6 in the consultation document. An additional access to Broomfield Hospital and Farleigh Hospice is identified as an infrastructure requirement, along

with new pedestrian and cycle connections, and recreation and community space.

Go to www.chelmsford.gov.uk/planningpolicyconsult to:

Read the consultation documents

Make your comments

Sign up to alerts for consultations

For tips on how to register, or what to do if you are registered but have forgotten your login details, read our User Guide to find out more:

www.chelmsford.gov.uk/EasySiteWeb/GatewayLink.aspx?allid=54663

E-mail: planning.policy@chelmsford.gov.uk
Helpline: 01245 606330

Chelmsford Development Plans Latest

Chelmsford City Council has published Round 3 of its Local Plan – the ‘Pre-Submission Document’. Here’s what the latest changes mean for Broomfield.

‘North of Broomfield’

This site was earmarked for 800 dwellings, plus a single form entry primary school. This has been reduced to 450 dwellings.

By reducing the number of dwellings, the City Council now seems to accept that a single form entry primary school is unlikely to be built ‘north of Broomfield’. (A new development really needs to be 1,500 – 2,000 dwellings to secure a stable new primary school that can cope with ups and downs in pupil numbers.) Primary school places will now need to be provided at the existing Little and Great Waltham and Broomfield Primary Schools, which means only about 450 new houses can be accommodated. The proposed new second access road from Blasford Hill into the north side of the Hospital site is apparently not affected by the reduction.

However, the developer’s agents have already told the City Council they believe the density could be increased upwards from 450, while still retaining an appropriate landscaped and green setting, mitigating any impacts on Pudding Wood. So, it’s likely the reduction will be challenged during the consultation and examination

‘Land south and west of Broomfield Place’

This site was earmarked for about 220 dwellings, to include a new expanded Broomfield Primary School. This has been cut out completely.

Talks about rebuilding Broomfield Primary School have been going on for 10 years and have got nowhere. The latest plan is to extend the School on its current site. The Parish Council argued strongly that without the promised new school on a new site, there should be no housing development either. I’m pleased to say that Chelmsford City Council has agreed with us.

Two years ago, Chelmsford City Council proposed that Broomfield could cope with over 1,700 new dwellings between 2021 and 2036. A reduction to 450 dwellings is a big step in the right direction. However, both these reductions could be reversed by the government-appointed independent Inspector later this year (see below). So we can’t relax.

What happens next?

A 6-week consultation is underway, from 31st January to 14th March. There is a notice from Chelmsford City Council giving more details on page 9.

After that, the final draft Local Plan will be sent to the Government, which will appoint an Inspector to hold an ‘Examination in Public’, later in 2018. At the Examination, City Council officers will defend their proposed Local Plan against a variety of objections. We expect that the developers in Broomfield will try to get their sites increased back to the original size and more developers may ask the Inspector to include their sites as well. However, the Inspector could strike them out altogether – the Inspector’s decision is pretty much final and it could go either way!

What does the Parish Council think?

These are the Planning Committee’s initial comments:

- The drop in proposed housing numbers from 1,700 two years ago to 450 now is very welcome
- Apparently, the reduction would not affect the proposed new access road into the Hospital site from Blasford Hill (which a recent survey suggests most Broomfield residents would like to see)
- However, developers will probably argue for housing numbers to be increased again, so we need to be ready to defend the reductions at the Examination
- Taking a Chelmsford-wide perspective, the vast majority of out-commuting takes place along the A12 corridor, especially towards London. We believe it is more sensible to site

development along this corridor and the A130 south. Traffic from new developments in Broomfield, Writtle and Great Leighs will clog up the city centre and country roads even more, as it tries to get to the A12.

- We’re also concerned that the proposed North-East Chelmsford Bypass now seems likely to be just a single-carriageway road. Even this depends on several developers working together to achieve it. If they don’t, or if it is delayed, more traffic from north of Chelmsford will have to use Main Road Broomfield and surrounding country roads.

The Committee will continue to listen and to read the substantial number of supporting documents before finalising its response.

What is the Parish Council doing?

The Planning Committee will:

- Work together with the neighbouring parish councils, so that the views of our local communities in north and west Chelmsford will carry more weight
- Get expert planning and highways advice, jointly with the other parishes to keep costs down, so that our response is as powerful as possible
- Send a leaflet to every house in Broomfield to make sure all residents know about the latest version of the Local Plan
- Hold a Drop-In event on Sunday 4th March in the Village Hall, so residents can find out more details, including how to comment. Drop in anytime between 3.30 and 8pm.

What can you do and how do you comment?

We urge all residents to comment, whatever their views. We expect developers and others to argue

at the Examination that Broomfield can take more, so if you want to keep the number at 450 or argue for it to be lower still, please do comment.

Also, the City Council has said that comments made in Rounds 1 and 2 of the Local Plan consultation won’t be automatically re-considered, **so please repeat any comments that you made at earlier stages.** Any comments you make now will be passed to the Inspector.

Making a comment isn’t as difficult as it seems at first, especially if you only want to comment on one thing (e.g. Broomfield!). At the Drop In, we can explain how people can make comments - though of course we can’t tell you what to say and would not want to.

The main things to remember are:

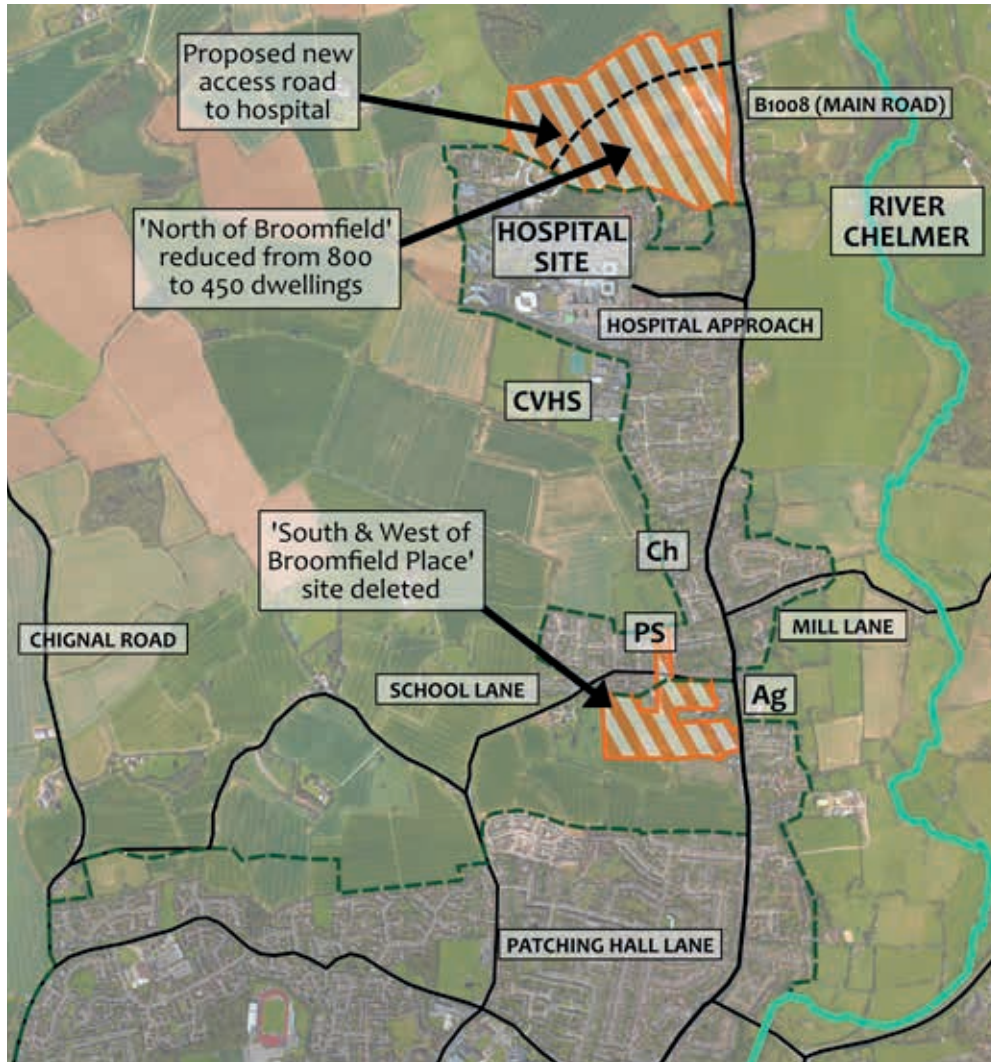
- You can comment in one of several, different ways. The City Council prefer people to use the on-line system, but you don’t have to. You can still comment on paper – phone 01245 606330 to get a form. Or you can download it from the City Council website: www.chelmsford.gov.uk/new-local-plan and e-mail it or post back when you’re ready.
- The Inspector concentrates on specific questions, so it’s best to relate your comments to one of these. For most people, it probably means explaining why you think the Local Plan is ‘justified’ or not. In other words, is it the most appropriate strategy, when compared to reasonable alternatives.

We look forward to seeing you and hearing your views at the Drop In event in the Village Hall on 4th March. Or please feel free to e-mail the Parish Office with any comments or questions at planning@broomfieldessex.co.uk

John Blake

Chair of Planning Committee

Residents may be interested in a private petition requesting the City Council to reconsider their decision to exclude sites along the A12. For more information visit website CHANGE.ORG and search for STOP CHELMSFORD CONGESTION



CVHS – Chelmer Valley High School
 Ch – St. Mary’s Parish Church
 PS – Primary School
 Ag – The Angel



KEEP CALM AND SAVE BROOMFIELD

FINAL CONSULTATION

YOUR LAST SUBMISSION REDUCED A POSSIBLE 1800 HOMES TO 450, BUT ALL THOSE COMMENTS WILL **NOT** BE REVIEWED BY THE INSPECTOR.

PLEASE RESPOND FOR THE FINAL TIME.

Although this consultation only has four questions, the inspector requests answers are referenced against CCC Local Plan documents. Please come along and your councillors will endeavour to find the answers you need!

Sunday March 4th – 3.30-8pm
BROOMFIELD VILLAGE HALL

Broomfield Cottage Gardeners' Society



Broomfield Primary School Christmas Fete

At the invitation of the School's PTA, the Society entered a Christmas tree, which some of our members decorated appropriately with fruit and vegetables, to contribute to the "forest of trees" at the Fete on 10 December. We were delighted to win first prize with our tree, as shown in the photo.

Evening Illustrated Talks

Our 2017/18 season ended on 28 February with our AGM, followed by a talk on Essex Town and Village Signs by Keith Lovell. Our 2018/19 season will commence on Wednesday, 24 October 2018 (see the village diary or our website for details nearer the time).

Plant Sale

We will be holding a Plant Sale on Sunday 20th May 2018 from 10am – 12.00 noon at The Barn on the Broomfield Allotments site. The entrance is between 149 & 151 Main Road. This is open to everyone so please come along and select some plants or seedlings, both flower and vegetable, for your house, garden or allotment. If you would

like to donate some plants then please bring these along to The Barn on Friday 18th May between 2pm and 3pm. Proceeds from the sale will go towards our selected Charity for 2018.

Summer Show

This year's Summer Flower & Produce Show will be held on Sunday 15th July 2018 in Broomfield Village Hall and will be open to the public from 2pm to 4.30pm. If you are interested in entering any of the classes, which include flowers, fruit & vegetables, floral & vegetable arrangements, cookery & preserves, photographs & handicrafts and children's classes, please contact our Show Secretaries, Selina Matthews on **01245 443108** or Christine Welch on **01245 355505** for a Schedule (which should be available early April).

Trading Centre News

We have a wide range of general gardening products on sale including a large array of seeds at 25% discount. Opening times are 2pm-3pm on Fridays and 10am-noon on Sundays. In order to benefit from the Trading Centre you will need to join the Society. Membership is £4.00 p/a, £3.00 p/a for Senior Citizens & £2.00 p/a for Young Gardeners (up to and including 18 years of age).



Membership can be obtained at the Trading Centre which is located in The Barn at the Broomfield Allotments site or by calling our new Membership Secretary, Angela Wild on **01245 441412**.

Open Gardens

We hold open gardens evenings, laid on by members for members. These start on 24th May with a visit to Nick Smith's nursery. These will be followed by Open Gardens evenings on the first and third Thursday in June, July and August. If you are interested in opening your Garden to members, please contact Dick Chapman on **01245 266508**.

Website

Please visit our website, which provides information on the Society's activities and also includes a section exclusively for members only, at www.broomfieldcottagegardenerssociety.co.uk and let us have any comments, suggestions or even garden-related articles for publication. We also have a second website for users of mobile devices which is automatically accessed from a mobile device (smartphone or tablet). However, the main site can still be accessed from a mobile device by selecting "Desktop" at the top of the Home page.

Facebook site

We now have a facebook page where regular updates are issued. Please search in Facebook under "Broomfield Cottage Gardeners Society" or please type the following link into your browser <https://www.facebook.com/groups/355859514864259/>

Philip Richards

FOR A GREEN & PLEASANT LAND

PRESENTING THE HAYTER HARRIER RANGE

Hayter mowers are precision engineered to deliver unbeatable performance and reliability. And with the rear roller range, you make the stripes that are the hallmark of the 'Great British' lawn.

Petrol Mowers from £319.99

C SERIES - THE BETTER BRITISH GARDEN TRACTOR COUNTAX

Built in Britain for the British garden

- Cut & collect* wet grass with no clogging
- Built to last - features a cast front axle and reinforced cutter deck
- Drive powered accessories
- Tackle nettles and brambles**
- Stripe a lawn*

Countax ride-ons from £3399.00



Requires optional: *Powered Grass Collector **High Grass Mulching deck

01245 362 377

www.grasshopperltd.co.uk

Grasshopper (Hort) Ltd Grasshopper Garage, Braintree Road, Chatham Green, Chelmsford, Essex CM3 3LD



Broomfield Cottage Gardeners' Society



Charity Plant Sale



Sunday 20 May

We need your plants!

10am—12noon

The Barn, between 149 & 151 Main Road

Please bring along any surplus or spare seedlings or plants (vegetables, flowers or fruit) to The Barn on or before Friday 18 May or on Sunday 20 May to add to our Charity Plant Sale. Thank you!

Our Charity for 2018 will be decided at the AGM on 28 February.

www.broomfieldcottagegardenerssociety.co.uk

Broomfield Footpath Society

Our programme of walks for 2018 commence on Sunday 18th March with a local walk around Long Shapley, Border Wood and New Barn Lane. Please note our new start time of 2.15 p.m. for the Sunday walks and 7.15 p.m. for the evening walks.



A Knight in Great Garnetts Wood, Barnston, summer 2017

To advertise please call 01843 269513

Broomfield Footpath Society - Programme Year 2018

**All walkers to meet at Church Green, Broomfield.
Lifts available for those without cars.**

Sunday afternoons meet at 2:15pm.

Mar 18	Long Shapley – Border Wood – New Barn Lane	Cars to Broomfield
Apr 1	Broads Green - Fanners Green "Primrose Walk"	Cars to Broads Green
Apr 15	Walthambury – Green Man	Cars to Howe Street
Apr 29	Danbury Common "Bluebell Walk"	Cars to NT opp. Cricketers

Wednesday evenings meet at 7:15pm.

(Sunset)		
May 16 (20.45)	Broomfield "Buttercup Walk"	Cars to Broomfield
May 23 (20.55)	The Three Elms circular	Cars to The Three Elms
May 30 (21.04)	Square and Compass, Fuller Street	Cars to Fuller Street
June 6 (21.11)	Rose and Crown, Great Waltham	Cars to Great Waltham
June 13 (21.17)	Writtle – Admirals Park	Cars to Writtle, (Duck Pond)
June 20 (21.20)	Rodney Inn, Little Baddow	Cars to Rodney Inn
June 27 (21.20)	Spotted Dog, Bishops Green (Nr Dunmow)	Cars to Bishops Green
July 4 (21.18)	Leather Bottle, Pleshey	Cars to Pleshey
July 11 (21.13)	The Queens Head, Boreham – Paper Mill Lock	Cars to Boreham
July 18 (21.06)	Compasses, Little Green	Cars to Little Green
July 25 (20.57)	The Walnut Tree, Broads Green.	Cars to The Walnut Tree

Sunday afternoons meet at 2:15pm.

Aug 5	Ingatstone	Cars to Ingatstone Hall
Aug 19	Sweeps Walk – Croxtons – Little Waltham	Cars to Broomfield
Sept 2	Paper Mill Lock – Bumfords Lane (tea and cakes)	Cars to Bumfords Lane
Sept 16	Stacey's - Beaumont Otes – Bushy Wood	Cars to Broomfield
Sept 30	Galleywood – Great Baddow	Cars to Galleywood Common
Oct 14	Stacey's, Priors & Scravels	Cars to Broomfield

ALL ARE WELCOME

No walks longer than 5 miles. Contact **01245 698175** or **01245 441021**

Follow us at www.facebook.com/broomfieldfootpathsociety or www.broomfieldessex.org

For all your engraving needs!

CLEARCUT
ENGRAVING LTD

Trophies · Hunt Buttons · Brass Plaques · & more

Personal & professional

Unit 2B Beehive Works, Beehive Lane, Chelmsford, Essex CM2 9JY

01245 352016 | clearcutuk@aol.com

ALL ROOFING WORK UNDERTAKEN

07866 466148 • 01277 821 683

New roofs
Renewals
Leadwork
Feltwork
Fascias & Soffits
Guttering

TOM ROBERTSON
& LEADWORKS
ROOFING

www.tomrobertsonroofingltd.co.uk

Thursday Afternoon Art Class

The students at the Art Class are rightly proud of their artworks - they are showing paintings and drawings from their project on 'Animals'. The other projects they will be working on for the rest of this term will be: 'Tone and Monochrome', 'Night Scenes' and 'Using Pastels', so they will be receiving an interesting and varied programme, while enjoying a friendly and relaxing afternoon among friends.

The class is completely mixed ability, so there is no competition or exams. People just work at their own level of skill, and learn as they go along, with help and advice always at hand from the tutor, Susan Keeble.

The Art Classes have been running at the Village Hall for several years now, and have proved very popular. In fact, classes are currently full for the Spring term (up to Easter), but names can be put on a waiting list for future terms, should vacancies arise.

Enquiries should be made to Susan Keeble, on **01377 353973**, or email susankeeble2@gmail.com, or better still, see the website: www.susankeeble.wixsite.com/artist, where you can view more of the lovely artwork produced by the students.



ACT FIRST Tots

Child development is at the heart of everything that we do. From This November Act First Tots will be holding weekly sessions on Wednesdays at 9.30 - 10.15am at Broomfield community centre. This high energy and buzzing sessions are for 2- 4 year olds and younger siblings are invited to join in the fun too. Through drama, song and funky dances your little ones will boost confidence, improve concentration and give them a creative outlet to make friends and have heaps of fun.

For more information and book FREE trail please contact Sarah Hitchin on **07964910104** or email: actfirstperform@gmail.com or visit: www.act-first.co.uk

Come and let your imagination fly!



Broomfield Village Hall Charity News

Having gone out to tender through Chelmsford City Council's Small Works Framework we are pleased to confirm that we have appointed Anderson's to carry out the installation of our adventure cycleway project. The work to clear the undergrowth and cut back the trees and the installation of a new gateway to protect our open spaces from unauthorised use has now all been completed.

We have been working hard on our application for funds to finance this project and are delighted that we have received £15,000 from the Community Initiatives Fund to help restore the car park. We had already received £2,000 from Fowler, Smith and Jones which covered the consultation process, the architectural drawings used for planning consent and the clearance of the undergrowth and tree work.

Those who visit our village hall will have noticed that the floor has been refurbished and is looking fresh and new. In addition the work to upgrade and improve our moveable acoustic wall has finally been completed and has made a significant improvement.

The village games committee are busy making preparations for the Village Fun Day led by Councillor Sue Hubble. Many new and interesting attractions are planned for the event on Sunday 8th July so please put the date in your diary. We will keep you updated with details closer to the time.

We continue with our weekly Stay and Play mornings and would love to welcome more parents, carers and children to the hall on a Monday from 9.15-11.15am. We also have an open coffee morning on the 1st Wednesday of every month. This is a great chance to come and catch up with friends and neighbours as well as meet new people in your community.

Trevor Jones

Little Yoga

Little Yoga Studio run yoga and mindfulness classes for children ages 3-11 every Tuesday at Broomfield village Hall. Classes aim to work on a child's natural flexibility and inspire their imaginations with fun and energetic yoga stories, while creating a sense of calm with creative meditation stories and relaxation exercises.

With fun, interactive classes working on building concentration levels, helping ease childhood conditions such as constipation, asthma and low concentration levels, these unique classes are a must for young children. Classes run Tuesdays at Broomfield Village Hall, with Pre schoolers at 2.30-3.00pm and little yogis (4+) 3.45-4.15pm.

Book a place at www.littleyogastudio.co.uk



Susie from 'Beyond Sound Yoga' offers the following top tips for optimum health

Sleep: Aim for seven to eight hours of good-quality sleep every night.

Meditation: Spend time every day in silence.

Exercise: Move your body daily by walking or yoga.

Emotions: Be aware of your relationships—are they supporting your spiritual goals?

Nutrition: Eat healthy, fresh foods with a focus on fruits and vegetables.

Grounding: Spend time in nature.

Susie runs a hatha yoga class designed to enhance your health and well-being at 8pm every Wednesday in the small hall. £12 pay as you go. All welcome! For more details, email susie@beyondsoundyoga.co.uk



Enjoy learning a new skill that can benefit both you and your baby. Baby Massage can help:

- Strengthen your relationship with your baby
- Help your baby to relax and encourage a deeper sleep
- Relieve wind, colic, and constipation
- Develop muscle tone and co-ordination
- Boost self-esteem and confidence in your parenting
- Give you an opportunity to socialise with other parents in the local community

About the Course:

- The course runs over 5 weeks and you will learn:
- Massage strokes for the legs, feet, stomach, chest, arms, hands, face and back
- A colic routine
- Gentle Movements
- Recommended massage oils

The classes will also include informal talks and discussions on relevant baby related topics including reading and understanding behaviour states, crying, and how to adapt the massage to suit your baby.

Suitable for all babies from birth until crawling.

Baby massage group course dates in April / May:
Wednesday: 25th April, 2nd, 9th, 16th, and 23rd May 2018.

Friday: 20th April, 4th, 11th, 18th, and 25th May 2018. (Please note: there is no class on the 27th April, therefore the course will run over 6 weeks)

For more information or to book your place on the next course please contact Keely on: **07875 627393** or via email: **keely@lullabybm.com** or visit **www.lullabybm.com**

Slimming World

Broomfield's Slimming World Consultant sets sights on London Marathon

Victoria lost 3 and a half stone with Slimming World after being fed up she couldn't run around the park after her son. Now she is set to do something she would never have dreamed of before losing weight – run the 26.2 mile London Marathon on April 22nd.

Victoria, joined her local group in January 2010 at a size 18. Now size 8-10, she's maintained her weight loss for over 7 years. She has a new love of running and joined a group of 100 from all over the UK as part of a team running for MS-UK. The team are aiming to raise £250,000 which will go directly to the Colchester based charity who help individuals diagnosed with Multiple Sclerosis through a wellness centre, a dedicated helpline and other resources. This cause is close to Victoria's heart as her Dad was diagnosed with MS in 2001. When he was fit and well he ran the London Marathon himself so she has seen how this illness can change someone's life. Victoria is aiming to raise at least £2,500 through her own fundraising activities.

You can sponsor Victoria via. **www.justgiving.com/fundraising/victoriadarnell**

Slimming World meets every Tuesday 3pm, 5pm and 7pm in the Village Hall. Call Victoria on **07823 441198** for further details.



Ruggerbugs

RUGGERBUGS is a multi-award winning, fun and exciting pre-school sports development programme based around non-contact rugby for girls and boys, aged 18 months to Six years. It is designed to promote a fun and positive attitude to sport and fitness.

Establish in early 2007 RUGGERBUGS is a leading company in this field and the first to establish close associations with local rugby clubs to ensure that children can progress to mini rugby with ease.

An informal yet professional programme, RUGGERBUGS gives young children a fun, safe and non-competitive indoor environment to enjoy a weekly activity, make new friends and develop a love of sport.

The unique RUGGERBUGS 'Head Start' programme assists with a child's foundation stage development and centres on developing basic motor skills through running, jumping, throwing and catching games. Social interaction is also a key concept giving young children confidence, self-esteem.

Give your child a Head Start.

For further information call **01279 797777** or email **office@ruggerbugs.co.uk**, for more information visit **www.ruggerbugs.co.uk**



Shimmy 'n' Groove

We welcome everyone to class. As fitness professionals, a safe, fun and effective workout is guaranteed every time. We haven't changed our prices either! Still just £5 pay as you go (since 2014).

We choreograph the classes to upbeat music from a range of eras to engage and energise our participants as we understand that music lifts the spirits, whilst endorphins are racing through your body making you feel happy.

Classes are offered throughout the week at various times to suit your life style. We even run Fit Fun sessions where little ones can come too.

It's a community fun fitness environment where everyone thrives within their own accomplishments, often making friends and taking part in social activities too, such as Spa Days, meals out, afternoon teas, team challenges, charity events and our annual winter social at Little Channels.

Why not come and try it? Parking at all venues is ample and free, what are you waiting for?

Lindsey Abbott



Shimmy 'n' Groove Fitness



£5 Pay as you go **unless stated*

💧 = Low Intensity
💧💧 = Intermediate Intensity
💧💧💧 = High Intensity

<p>Shimmy 'n' Groove 💧/💧/💧/💧/💧</p> <p>Monday - Lindsey 18:00-19:00 Tuesday - Lindsey 09:15-10:15 Wednesday - Lindsey 18:00-19:00</p> <p>Shimmy 'n' Sculpt 💧/💧</p> <p>Monday - Lindsey 19:00-20:00 Wednesday - Lindsey 19:00-20:00</p> <p>Blockfit 💧/💧/💧/💧</p> <p>Tuesday - Emma 19:15-20:15 Thursday - Lindsey 09:15-10:15 Saturday - Lindsey 09:30-10:30</p> <p>Fit Fun* 💧/💧/💧/💧</p> <p>Monday - Lindsey 13:00-14:00 Tuesday - Lindsey 11:00-12:00 Wednesday - Emma 13:30-14:30 Friday - Emma 10:00-11:00</p> <p>Step 'n' Strength* 💧/💧/💧</p> <p>Sunday - Lindsey 09:30-10:30</p> <p>Personal Training* Lindsey offers bespoke wellness plans in her home gym. Daytime and evening sessions to suit your schedule.</p> <p>Shimmy Strutology* Monthly 'active girls night in'. Release your inner diva with friends. Price incl. glass of fizz & water. Call to book.</p>	<p>Dance inspired retro aerobics</p> <p>Parkwood Academy, North Avenue, CM1 2DX Broomfield Community Hall, Broomfield Road, CM1 7AH Parkwood Academy, North Avenue, CM1 2DX</p> <p>Legs, Bums and Tums - core conditioning</p> <p>Parkwood Academy, North Avenue, CM1 2DX Parkwood Academy, North Avenue, CM1 2DX</p> <p>Dance, Combat, HIIT & Stretch</p> <p>St John's Church Hall, Vicarage Road, Chelmsford, CM2 0JD Broomfield Community Hall, Broomfield Road, CM1 7AH TST Fitness and Wellbeing, Hill Road South, CM2 6HE</p> <p>Family fitness through fun activities *6 weeks/£40 Booking essential. Limited availability - home-based environment. Booking essential. Limited availability - home-based environment. TST Fitness and Wellbeing, Hill Road South, CM2 6HE TST Fitness and Wellbeing, Hill Road South, CM2 6HE</p> <p>Shimmy twist on a retro classic *6 weeks/£30 TST Fitness and Wellbeing, Hill Road South, CM2 6HE</p> <p>Programs designed for you *5 sessions/£150</p> <p>Empowering dance class *£95 pp</p>
--	--

 Lindsey Abbott: 07886 721411
 Facebook.com/ShimmyAndGrooveFitness
 @shimmygroove




Highwood Landscapes & Purrfect Paving

01245 422712 | 07711 606561

www.highwoodlandscapes.co.uk

• Trees • Pruning • Hedge Trimming • Roots Removed •

• Topping & Rotovating • Turfing • Fencing • Garden Design •

• Decking • Patios • Block Paving • Drives • Tar & Shingle •

PROPERTY MAINTENANCE

• Roofing • Chimney Repairs • Building Work •

• Flat Roofs • Guttering • Fascias & Soffits •

20% discount when you mention Broomfield Parish Council Magazine

Free written quotes & advice | 10 year guarantee on all work | 25 years of experience

Unit 1, The Paddocks, Highwood, Chelmsford, CM1 3PU



ARCHITECTURAL DESIGN & SURVEY CONSULTANTS







ARCHITECTURAL DESIGN
PLANNING

COMMERCIAL INTERIORS

RETAIL INTERIORS

FLOOR PLANS

SITE SURVEYS

EXTENSIONS

01245 933199

HELLO@SHOGUNARCHITECTURE.COM



architecture & design

FROST WINDOWS

We offer residential & commercial repairs plus much more...

01245 259121

07850 315054

info@frostwindows.co.uk

Years of experience, a personal touch and quality customer support

• Window Locks

• Door Locks

• Hinges

• Handles

• Sealed Units

• Child Locks

www.frostwindows.co.uk

Village Diary

Various activities including Karate, Bingo, Bridge Club, Aerobics, Women's Institute, Carpet Bowls, slimming clubs and children's activities take place in the Broomfield Village Hall on a weekly basis - please telephone the Village Hall **01245 443902**, email **bookings@broomfieldessex.co.uk** or have a look on the website **www.broomfieldessex.co.uk** for more information.

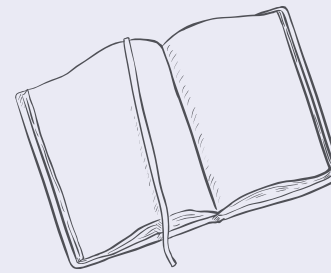
For Church services over Easter please see separate entry on page xx.

March

- 7 Coffee morning
with Mobile Information Service
10.00 - 12.00 Broomfield Village Hall
Orchard Springs W.I.
7.30 p.m. Broomfield Village Hall Russell
Savory, Wildlife at Stow Maries Aerodrome
Property and Planning Committee
7.30 p.m. Broomfield Parish Office
- 8 Heart and Sole
10.00 a.m. Chelmsford Sports & Athletic
Centre, Salerno Way
- 14 U3A
1.30 p.m. Broomfield Village Hall
Village Amenities Committee
7.30 p.m. Broomfield Parish Office
- 15 Heart and Sole
10.00 a.m. Chelmsford Sports & Athletic
Centre, Salerno Way
- 21 Parish Council Meeting
7.30 p.m. Broomfield Village Hall
- 22 Heart and Sole
10.00 a.m. Chelmsford Sports & Athletic
Centre, Salerno Way
- 29 Heart and Sole
10.00 a.m. Chelmsford Sports & Athletic
Centre, Salerno Way
- 31 Broomfield Cricket Club Easter Egg Hunt
2.00-4.00p.m. Broomfield Cricket Club,
Mill Lane

April

- 4 Broomfield Village Hall Coffee
10.00 - 12.00
Orchard Springs W.I.
7.30 p.m. Broomfield Village Hall A Peek
behind the Scenes - Marion Pettet
(The Chelmsford Ballet Company)
Property and Planning Committee
7.30 p.m. Broomfield Parish Office
- 5 Heart and Sole
10.00 a.m. Chelmsford Sports & Athletic
Centre, Salerno Way
- 11 U3A
1.30 p.m. Broomfield Village Hall
Village Amenities Committee
7.30 p.m. Broomfield Parish Office
- 12 Heart and Sole
10.00 a.m. Chelmsford Sports & Athletic
Centre, Salerno Way
- 18 Finance Committee
7.30 p.m. Broomfield Parish Office
- 19 Heart and Sole
10.00 a.m. Chelmsford Sports & Athletic
Centre, Salerno Way
- 26 Heart and Sole
10.00 a.m. Chelmsford Sports & Athletic
Centre, Salerno Way



May

- 2 Coffee morning
with Mobile Information Service
10.00 - 12.00 Broomfield Village Hall
- 2 Orchard Springs W.I.
7.30 p.m. Broomfield Village Hall
Annual Meeting and Resolutions
- 2 Property and Planning Committee
7.30 p.m. Broomfield Parish Office
- 3 Heart and Sole
10.00 a.m. Chelmsford Sports & Athletic
Centre, Salerno Way
- 9 U3A
1.30 p.m. Broomfield Village Hall
- 9 Village Amenities Committee
7.30 p.m. Broomfield Parish Office
- 10 Heart and Sole
10.00 a.m. Chelmsford Sports & Athletic
Centre, Salerno Way
- 17 Heart and Sole
10.00 a.m. Chelmsford Sports & Athletic
Centre, Salerno Way
- 19 St Mary's Church May Fayre
11.00 a.m. - 2.00 p.m. Church Green,
Broomfield
- 20 Broomfield Cottage Gardeners Plant Sale
10.00 - 12.00 The Barn,
(between 149 & 151 Main Road)
- 23 Neighbourhood Plan Presentation Evening
7.30 - 9.30p.m. Broomfield Village Hall
- 24 Heart and Sole
10.00 a.m. Chelmsford Sports & Athletic
Centre, Salerno Way
- 30 7.30 p.m. Parish Council Meeting
Broomfield Methodist Hall
- 31 Heart and Sole
10.00 a.m. Chelmsford Sports & Athletic
Centre, Salerno Way



Don't miss the St Mary's bus!

Now running! School bus from
Chelmsford to St Mary's Senior School

- 92% GCSE pass-rate
- Superb arts & sport
- Caring, supportive ethos
- For girls aged 11-16



St Mary's
Colchester

01206 216420 www.stmaryscolchester.org.uk

Gary K. Steggall



- + Tree Surgery
- + Reductions
- + Felling
- + Hedge Trimming
- + Seasoned Logs
- + Site Clearance
- + Free Estimates
- + Fully Insured
- + £5m Public Liability

07971 696375

01245 496758

garysteggall499@btinternet.com



Broomfield Cricket Club

It may well be out of season but here at the Cricket Club we are already planning for the new one which starts in April/May.

This year we will again be running two Saturday Senior teams, competing in the T Rippon Mid Essex cricket league which starts on 5th May. To ensure we're ready there will be indoor practice nets starting on Monday evenings from 12th March and pre-season outdoor friendlies in late April. New players are more than welcome so please contact me if you are interested.

Once again this season we will be focusing on our Junior section, running coaching sessions and matches for Under 11, 13 and 15 age groups. In fact, cricket for the juniors has already started with indoor net practice sessions NOW ON between 7pm and 9pm Friday evenings. We have qualified coaches, excellent facilities and are a



Club very much committed to providing Junior cricket. So if you would like to give it a try then do let me know. All abilities are catered for with the emphasis on it being fun.

We have the village community very much at heart and all are welcome. We have our own ground in a lovely setting at Brooklands in Mill Lane with a pavilion and bar. Social events run through the year and this year include an Easter Egg Hunt on 31st March from 2-4.00 p.m. This will be open to children ages 5-9 - parents are welcome to stay and enjoy the bar. Please request a form from Neilatkins162@gmail.com Entry is free but spaces are limited to the first 25 children to apply. They will all receive an Easter egg and there will be other prizes to be won as well plus the chance to play softball. Other events include a BBQ evening on the 9th June preceding our President's Day on the 10th, Presentation evenings in September, Sponsored Walk on 6th October, Bonfire evening on 3rd November plus many more. So as you can see there's lots going on as well as cricket. Just contact me at my email address below for more information.

Tony Cowell *Chairman*
tony.cowell1@btinternet.com



40
YEARS
DANBURY
Fencing Ltd Established 1979

VISIT OUR ONLINE SHOP

THE FENCING SPECIALISTS

www.danburyfencing.com Witham
01376 502020

Plans Made Easy

Planning & Building Services

Plans - Working Drawings
Building Regulations - Planning Advice

We specialise in timber/log buildings for the garden to use as an annexe/independent living - office - leisure. We also offer a full planning service (hassle free) from survey, design to submission to approval with build management if required.

01206 337177 | 07969 907953
info@plans.uk.net | www.plans.uk.net



OKELEY CARE HOME

Specialist baths · Library · Quiet rooms · Ample parking · Hairdressing
Fully accessible secure Sensory Gardens · Library services · GP services from local practices

Okeley is a modern, purpose-built 84-bed Care Home with first class facilities that specialises in dementia and care of the elderly.

With spacious bedrooms and luxury en-suite wet rooms, Okeley Care Home provides accommodation and care to meet the needs of those living in the home.

Okeley Care Centre has been specially designed to provide maximum comfort, convenience

and stimulation for the people who live there. We have a games room, a library, a variety of attractive lounges and dining rooms, and some lovely outdoor spaces for sitting and enjoying time with friends and family.

Our spacious bedrooms are all en-suite have been beautifully decorated ready for the residents personal touches.

Okeley has a superb location within an easy ten minute walk of Chelmsford City centre and main line station
Okeley Care Home, Corporation Road, Chelmsford CMI 2AR
Tel: 01245 287500 · Fax: 01245 287522 · Email: okeley@excelcareholdings.com

If you are looking for a career in care then please call or visit our website for more information

07500 870309 INFO@ESSEXTREECARELTD.CO.UK



ALL TREE WORKS UNDERTAKEN

PRUNING, THINNING, REDUCTIONS,
FELLING AND REMOVAL, DEAD WOOD REMOVAL,
SITE CLEARANCE, HEDGE MAINTENANCE,
FIREWOOD SALES

Call today for your no obligation, quote with no hidden extras!

07500 870309

FAMILY RUN BUSINESS
OVER 35 YEARS EXPERIENCE

£5 MILLION PUBLIC LIABILITY



99.8% Positive Feedback



99.2% Positive Feedback



Qualified workforce

WWW.ESSEXTREECARELTD.CO.UK



Domestic • Commercial
New Build • Rewires
Extensions & additions
Garden lighting • Fault finding
Testing and certification
Fully insured • NICEIC registered

Call us on
07557 684723 or **01245 233282**
email alex@fairstadelectrical.co.uk
www.fairstadelectrical.co.uk



Clinical
Advice Line

08:00 – 20:00, 7 days per week

Call now for information about hospice care, advice on managing symptoms, and other needs relating to a life-limiting illness.

01245 455478

Farleigh Hospice,
North Court Road,
Chelmsford CM1 7FH
www.farleighhospice.org



Registered Charity No 284670



Broomfield Royal British Legion

Soon it will be Spring, a time for new beginnings, regrowth and making plans for our future - be it retirement, travel or the possibility of volunteering our time for good causes. Why not join us at RBL Saxon Way where you can get involved as much or as little as you wish. Consider November, this is a time when we need to find dedicated volunteers willing to oversee our Poppy Sales within Morrison's Store for two weeks. Last November we raised £15,000 for the Poppy Appeal, which was down slightly on previous years due to fewer members/volunteers able to commit. Our grateful thanks to all those people who generously donated.

The refurbishment of the HQ in Saxon Way continues apace. Thank you to those members and volunteers who have carried out the internal decorations to a very high standard.

The Children's Christmas Party was an outstanding success - best ever so I am reliably informed. Thank you to all those who organised and prepared the party food, entertainment and a visit from Santa. The Social Club has now introduced an additional Bingo session so don't be shy - reach for the sky! Also in the offing is a conducted tour of the Tower of London Keys ceremony - see the notice board for details. Later in the year some Broomfield members will be taking part in a RBL organised pilgrimage to the WW1 battlefields. This will end with a ceremony at the Menin Gate where wreaths will be laid by nearly every RBL branch in the Legion.

Social activities continue with a programme of songs, singers and entertainers and the local teams regularly display their skills at darts, dominoes and crib. The big screen televisions provide healthy competition between all the popular football team supporters. Party banter, good conversation and a newly decorated venue; make it the place where you enjoy meeting friends here at the RBL Saxon Way.

Cheers.

Dougal Clifford

Broomfield Library

We had lots of fun making Christmas crafts at our Saturday craft special at the end of November, and our Baby and Toddler Christmas Rhyme time welcomed a special visitor who helped us make lots of noisy music and a Nativity scene.

Beware beautifully coloured caterpillars in your garden - our February half term craft morning included making caterpillars and butterflies based on the Very Hungry Caterpillar theme.

Anyone enjoy being creative and using their building skills? Our Block Builders Construction Club is happening every fourth Saturday morning of the month, all ages are welcome. If anyone has any lego they no longer need, donations would be very well used - contact us at Broomfield.library@essex.gov.uk.

Our Board and Card Games afternoons on the second Monday of the month continue to grow in popularity, lots of laughter accompanies the games and cups of tea. Join us at 2pm to find out what's causing so much hilarity.

Enjoy talking about books? Come and join our children's book chat on the first Saturday each



month, or set up your own book group with your friends, just come and see us to set everything up.

Coming up soon Fun on the Farm Easter holiday crafts, plant and seed swap and lots more - check out the library web page for details.

Looking ahead to summer, anyone aged 14+ who loves talking with children about books is invited to apply to be a Summer Reading Challenge volunteer. Application forms are on the volunteering page of the ECC website between 24th March and 10th June - its great fun, come and join us.

Interested in what was happening in Broomfield in the 70s and 80s and before? We have a display of old photos and Broomfield Times - you might find your house and club? Did you know that you can trace your ancestors using Essex Libraries? And you can download a huge variety of magazines from Essex Libraries - we're much more than books!

Pippa Cranshaw



1st Broomfield Scout Group

This is a special year for the Scout Group in Broomfield – we celebrate Scouting in Broomfield over the last 100 years! We are busy planning lots of celebrations to mark this achievement, and we kicked off this year with a Celebration Campfire in early January.

Beavers, Cubs, Scouts, Leaders and Parents all joined together on the Saturday afternoon to toast marshmallows, sing campfire songs and eat hotdogs around the campfire. The young people sang beautifully and loudly – did you hear them? We all had a lovely time enjoying the warmth of the fire with fun and friendship on a cold winter afternoon.

As Scouts we love our Badges, and a centenary year has to be marked with a special badge. Much of today's scouting is 'Youth Shaped' that is, young people and adults working in partnership together. Rather than the Leaders designing a badge, we ran a competition for all our young people to design a badge to commemorate the centenary, and WOW – we had some amazing designs! It was so difficult to choose one – especially as two of them really hit the 'Scouting in Broomfield' nail on the head. With a bit of juggling the judges managed to combine both of the two entries into one and hey presto, a new badge for all of us to wear for the year! Congratulations to the two winners – Mikey Barry (Scouts) and Ryley Cansell (Cubs)

All our sections love camping and being outdoors. This really came across in the badge entries, and by the time you are reading this, all sections will have been on at least one camp this year. The older scouts may well have done three....

Cubs started the year with an Indoor Winter camp on the theme of Superheros. I think they and the Leaders needed to be, as it snowed whilst they were there! Not that a bit of snow stopped



them enjoying the activities on offer and games in the dark. They all came home very tired and quite muddy but had a fabulous weekend – well done Cubs and thank you to the Leaders too!

Beavers then had their Indoor camp on the theme of 'Space'. Lots of activities were planned out and about, with the Beavers trying new challenges and conquering new frontiers – sorry, fears!

You may be surprised to know that you can make very good constellations using dried spaghetti and marshmallows. The tricky part is breaking the spaghetti to the right lengths to get them to look how they should – but they taste great if they go wrong and the leaders are very well prepared with extra supplies of marshmallows. Great Stargazing Beavers! And thank you to the Leaders and parents who helped make this possible.

The Scouts have had a day out to Duxford with a sleepover that night, as a warm up to the camping season starting in earnest. The hardier Scouts will be doing 'Brass Monkey' camp – it's aptly named. It's camping outdoors, without a tent – the scouts have to construct their own shelter to sleep in, and cook for themselves – it's in March!!! Brrrrrr

Then some of the scouts will be joining in the 'Plainsman Hike' or 'Wanderers'. The Plainsman hike is a two day incident hike around the county,



On the assault course

where the scouts have to carry most of their own kit, tent, food, cooking equipment as well as their own kit. A good team will split up the tent to spread the load as they will be walking about 10 miles on the Saturday and another 6 miles on the Sunday. Wanderers is similar. On the Sunday they hike for the day, so it's a great way to build up to the Plainsman for the next year. Go Broomfield!!

Then the Troop will be joining with others from the County for EPIC Camp. This camp has lots of different activities - caving, laser tag, pedal cars, climbing wall, rafting and abseiling to name a few. Well done Scouts and thanks to the Leaders for giving up their time.

The new Columbus Troop (based at Columbus School & College) are also busy planning their first activity day out and sleepover. The Scouts all have a fabulous time and the Leaders are brilliant, constantly encouraging the young people to achieve their best.

It never ceases to amaze me, all the activities that

the sections pack into each year and the time the leaders put in, not only running the nights but planning the camps and other activities. I think from this it's clear we have a very dedicated Leader team who enjoy all the different aspects of what Scouting has to offer – otherwise they wouldn't do it. All the Leaders are volunteers, who have jobs, families and responsibilities - the same as you.

If ten people reading this, thinking it sounds great fun (it is!), came and volunteered with us as Leaders, we would be able to clear our current waiting list of young people – some of whom will never get to enjoy Scouting as we don't have the spaces unless we open new Beaver and /or Cub sections. Think about it and get in touch if you're up for the adventure! That would be an achievement to celebrate in our Centenary year.

Ruth Reed Group Scout Leader
Ruth.broomfieldgs1@gmail.com

Heart and Sole

Heart & Sole is Chelmsford's healthy walking scheme, enabling you to join a programme of walks for enjoyment and health benefits. All walks are led by experienced leaders, often with a back marker enabling you to walk at your own pace without fear of being left behind.

Why not join the walk around Newlands Spring? We meet every Thursday at 10.00am in the car park, outside the entrance to Chelmsford Sport & Athletics Centre in Salerno Way, Chelmsford CM1 2EH.

Our buggy friendly walk heads through a pretty wooded area before meandering through the residential streets of Newlands Spring. This walk incorporates many green spaces and also some country views (summer walk only) before returning to the starting point through Melbourne Park.

The scheme is ideal for anyone wanting to:

- improve general fitness
- aid recovery from, or prevent illness or injury
- socialise and enjoy the beautiful views the local area has to offer

You are welcome to attend any of the Heart and Sole walks, more information can be found at www.chelmsford.gov.uk/heartandsole; all

walks are graded and act as a guide for those who want to know what to expect from each walk. The Newland Spring walk is graded 2 –

Suitable for people who are looking to increase their activity levels. Lasting between 30 - 60 minutes and may include some moderate slopes, steps, or uneven surfaces.

December saw our annual Yuletide Stride – a festive, walk leader led, stroll through Chelmsford to enjoy the City's Christmas lights. If that wasn't your thing because it was too cold or too near Christmas why not make a note of the Summer Solstice Stride and join us to welcome in summer? Commencing at Anglia Ruskin University with a choice of short (5km) or long (10km) routes on Thursday 21st June 2018 will once again follow the course of Chelmsford's rivers before heading out into the countryside.

Mark the date in your new 2018 diary and look out for more detail in the next edition of Broomfield Times and future editions of City Life.

For more information on the Heart & Sole Scheme and the health benefits of walking go to www.chelmsford.gov.uk/heartandsole or call **01245 606569**.

Malcolm Taylor

Obituary

Ray Barford 1931 – 2017

Ray, a lifelong resident of Broomfield was born into a large family of five brothers and six sisters. He was known by many throughout the Village as a consequence of his three main passions – football, gardening and the Royal British Legion.

By all reports his interest in the cultivation of fruit and vegetables started young – scrumping in local orchards and removing the winning bottles of wine from the rear of Cottage Gardeners Flower Show tent and sharing the spoils with his brother and friends at the bottom of the field! He went on to maintain an allotment for over 60 years. At one time with his father and brother they looked after three plots, bringing home large quantities of fruit and vegetables for the dinner table, supplemented by choice cuts of meat from his job as a meat wholesaler at Smithfield Market. His early knowledge of fruit and veg served him in good stead as he went on to win many prizes in local shows.

Similarly his passion for football also began early. He played for many years for Broomfield Football Club along with his brothers, who at times were even on the same team! He was proud to be elected President of the Club and was in that role when the Club purchased the fields in Mill Lane. His was not just an honorary role, he could often be seen marking out pitches and erecting nets for the Junior Teams in addition to organising outings.

Ray undertook National Service at 18, but signed on for five years! He was stationed in London and this is where he met his beloved wife Pam. They married in East Acton in April 1956 and were soon back in Broomfield. Service practices never left him. His son Neil remembers having to stand still whilst his father buffed his shoes to a mirror shine that reflected the sun. "He used that duster back and forth so hard it heated your feet". He also had a passion for military music which could often be heard along the street. His son Neil remembers this was not a good mix if a teenager had a hangover.



As an active member of the Royal British Legion, in addition to being a Committee Member for many years, he organised Dinner/Dances and assisted with the Poppy Appeal collections. He and his wife could often be seen manning the Poppy stand at Morrisons. Ray was made a Vice-President of the Broomfield Branch in recognition of his services to the Legion.

Family was never forgotten and they will have fond memories of picnics, barbecues at Hylands Park and whistling kettles on gas stoves – all followed with a game of cricket or rounders.

Ray will be sadly missed by all who knew him especially his wife, two sons, five grandchildren and two great grandchildren. But he will always be remembered by those who knew him as a polite gentleman who was always willing to help where he could.

Neil and Alan Barford, Malcolm Taylor

To advertise please call 01843 269513

St Annes
Haulage Ltd

**BUY BUILDING MATERIALS
IN ESSEX AND SUFFOLK**
www.stanneshaulage.co.uk



- 1-15 tonnes loose aggregate delivered
- 15 tonne grab available for soil & hardcore
- General building supplies
- For domestic and trade



VERY
COMPETITIVELY
PRICED

We have a strong reputation as a reliable and committed supplier of construction materials and landscaping supplies



Est. 1975
find us on
facebook

01376 348747
turnerstannes@btconnect.com

Your one-stop shop for garden machinery
**LEN'S LAWNMOWERS
& GARDEN MACHINERY SERVICES**

Over 100 machines on display

Mower servicing & repair

Collection & delivery
FREE with a service

Unit 16 Reeds Farm
(off main Roxwell Road)
A1060, Roxwell, Writtle
Chelmsford CM1 3ST

OPEN 6 DAYS A WEEK
(subject to seasonal change)

Main agents for **Motomach** **ARTIS** **ALDO**
Main dealer & stockist for **HATER**
We also stock **QUICKCAST** **SPIN** **SPINAL**

www.lens-lawnmowers.co.uk **01245 422571**

News from St. Mary w. St. Leonard's Church, Broomfield

Our Broomfield Church calendars were a great success and I hope that many of you will enjoy the familiar pictures of the church throughout the year. It was wonderful that so many people from around the village contributed photographs that they had taken of the church and churchyard for this venture. We have lots of photos left so hope that we may produce a 2019 calendar for people too. Anyway, that is a long way ahead, but as a church we do have to take a long view.

If you regularly walk the footpaths around the church you may well have noticed some changes in the field to the north end of the churchyard. In the 1930s the then Rector of the church had the foresight to purchase more land as he envisaged Broomfield as a place which would grow and expand and he considered that in the long term there may be a need for a larger churchyard so that the people of this village could be reassured that their final resting place could be at the heart of the village which they had loved. For many years some of that land has been rented on license to the farmer and to some of our neighbours in Jubilee Avenue, but it has now come back into the curtilage of the church. As the year progresses you will see that new fencing will be erected. Later this year the land will be consecrated for burials. I am hoping that we receive permission from the Chancellor of the Diocese of Chelmsford to erect a water catchment fixture in order that those who need to water flowers and plants on graves at the north end will not have to walk so far with their watering cans.

It is our intention that all of this land will continue to be well maintained and a benefit to all who live and like to walk around Broomfield and will, of course, provide a final resting place for anyone who lives in the village. All of this work comes at a cost and a small group from the PCC are in the process of planning a scheme of works, applying for the appropriate planning permissions and faculty applications from the Diocese and receiving quotes from contractors for the work which needs to be done. We are in contact with the Parish Councillors who are fully informed of

the work which is planned.

We are aware that this work will cause some disruption to those who live in houses adjoining the churchyard and to those who regularly walk the churchyard footpath and we intend to keep this to a minimum. We can only thank you in advance for your patience and reassure you that we will undertake all that needs to be done as quickly and efficiently as is possible.

God willing the churchyard will remain a place of peace and repose which all people in the village can enjoy.

Rev'd Carolyn Tibbott
Vicar of Broomfield



Churchyard in the snow, December 2017

Broomfield Parish Church

Dates for your diary Spring 2018

March 9th | 7pm
Quiz Night in St. Leonard's Hall

March 11th | 10.30am
Mothering Sunday Service in Church

March 25th | 10.30am
Palm Sunday Procession

March 29th Maundy Thursday | 7pm
Seder Meal & Eucharist

March 30th Good Friday | 10am
**Morning Worship
at Broomfield Methodist Church**

March 30th Good Friday | 2pm
Hour's reflection at the cross

April 1st Sunday | 10.30am
Easter Day

April 22nd Sunday | 11.30am
**Vestry meeting and APCM
(immediately after Sunday worship)**

May 10th Ascension Day | 7pm
Eucharist with MMP (venue to be advised)

May 19th Saturday
May Fayre

May 20th Sunday | 10.30am
Pentecost

May 27th | 10.30am
Trinity Sunday

Churches Together in Chelmsford

Many of us enjoyed the lighted lantern Christmas walk in search of Angels hidden around Broomfield. During the walk Christmas carols were sang and then everyone congregated in the Village Hall for a Christmas service and refreshments. The hidden angels spelt out the name Gabriel and each participant was given their own special knitted angel with the message "please look after this angel that has been made for you with love".



Broomfield Methodist Church

Messy church will begin again in February-look out for Messy church dates on the banner at the front of the church. A warm welcome awaits you with refreshments, listen to a story and enjoy making crafts. This is a chance for adults to sit and relax and make new friends and for children to have fun with the various activities. Times are 3.30-5pm on Mondays.

Church activities can be found on the website www.broomfieldmethodistchurch.com

As well as the Sunday morning service at 10.30 you are welcome to one of the house groups which allows more informal discussions.

Easter services will include a Walk of Witness on Good Friday and an Easter breakfast and communion family service on Easter Day.

Lynne Johnson

Santa Event

On the 9th December Santa visited St Mary's Church. Throughout the Church there were numerous stalls and refreshments - something for everyone!

Thank you to all who attended and helped in anyway - we raised over £900.

We shall be holding another Santa event in December this year.



Orchards Springs WI

During the month of December our W.I. took part in the Essex Federation of W.I.'s Christmas Tree Challenge at Hyde Hall, Rettendon. The trees, provided by the gardens, had to be decorated with compostable materials enabling them to be shredded during January. The uses for egg boxes, wine corks, egg shells, acorns and many other items were endless and all down to the imagination and hard work of our Craft Group. The 80 trees provided a spectacle of colour and ingenuity for the public to see.

Also, six members and some partners had an enjoyable evening at the Centenary Ball at the Chelmsford City Racecourse. The occasion was the celebration of 100 years of the Federation of Essex W.I.'s with nearly 100 other guests. A delicious three course meal with wine flowing was followed by dancing to a live band.

After playing and sadly losing three games, the Darts Team finally won their first game this year. A small group of 8 meet up once a week to practise and natter.

We are a friendly welcoming W.I. who meet every 1st Wednesday of the month at Broomfield Village Hall at 7.30pm. Visitors are always welcome.

Sheena Ager



Orchard Springs WI members and partners at the Centenary Ball

**St. Mary W. St. Leonard's Church
Broomfield**



May Fayre

Church Green

Saturday 19th May | 11am - 2pm

Lots of stalls, games and activities

All are welcome

Mothering Sunday

Family Service

11th March
10.30am

St. Mary's Church, Broomfield

Flower posies for all the ladies

*All are welcome -
please come and join us!*



Broomfield & District U3a Report

A great time was had by all at the Christmas festivities. After the usual welcome from the Chairman, we were entertained by the Ukulele Group followed by the Boreham Handbells. The handbells played a programme of festive favourites and carols and all joined in with a singalong.

Following the entertainment there was an opportunity for members to try their hand at ringing – with varying degrees of success! The afternoon ended with seasonal nibbles and mulled wine.

Such was the enthusiasm of the “amateurs” a Handbell Group has now been established within the U3A – watch this space for further details.

December saw many of our groups planning for the next year. History buffs looking to learn more of the ancient towns in the county, whilst the walkers were planning incursions around its borders.

In January Celia Gwynn told the U3A of her accidental introduction to spinning and then took us through the whole process from removing the fleece from the sheep to producing the final knitted garment. This included teasing out the wool fibres, spinning, carding and dyeing the wool to knitting as well as the acquisition of natural lanolin from the fleece and its use in moisturising creams. Our monthly programme

for 2018 will continue to delight with a wide variety of speakers on topics such as journalism, zoos, classic cars and folk music (and the stories behind many of our ‘native’ folk songs).

So if you are active, enjoy life, semi-retired or retired why not give us a go – details and further information can be found on our website or come and visit us at our monthly meeting on the second Wednesday of each month (excluding August) in Broomfield Village Hall, behind The Angel, at 1.30pm.

Website: www.u3asites.org.uk/broomfield
Email: broomfieldanddistrictu3a@gmail.com

Diary Dates

14 March

'90 Years of Social History with an Austin 7' – Andy Bennett

11 April

'Fools Gold' (Folk Group) – Carol & Steve Robson

9 May

AGM & 'Transit Maps, the Good, the Bad and the Ugly' – Max Roberts

13 June

'Colchester Zoo' – Rebecca Moore

11 July

'Talking Newspapers' – Pat Wilson



Farleigh Festive update

We at Farleigh Hospice had a busy December hosting our annual Santa Fun Run and Light up a Life services across mid Essex.

On Sunday 3rd December our festive event, Santa Fun Run took place in Chelmsford's Central Park. The response was amazing, with over 800 people dressed as Santa running, jogging or walking the family friendly 5km course. The event raised a staggering £30,000 for the Hospice and was kindly sponsored by Law firm, Tees.

"I loved being with the multitude of Santas running for Farleigh Hospice! Alison Stevens, Chief Executive of Farleigh said, although it was a chilly morning, there was such a good atmosphere and everybody had loads of fun! The children looked especially cute dressed as elves and Santas."

On 8th December, over 300 people gathered at Chelmsford cathedral for our Light up a Life service, a special way to remember loved ones. The service started with a procession down the high street before gathering around the Christmas tree covered with lights that shone in memory of absent friends and family.

Thank you to all of you who volunteered and took part in the Santa Fun Run and Light Up A Life services. Your support is invaluable to us. Visit our Facebook page to see the photos from the Santa Fun Run, tag yourself if you see any of your photos!

www.facebook.com/FarleighHospice

THE STABLES NURSERY



Full day care for children aged 0-5 years
Lovely country setting
Free pre-school places available
Holiday club also available
Forest Fun also available



01245 348159 www.thestablesnursery.co.uk



No rush approach for you to sustain your independence in your own home

Elderly · Post Operative Care · Supported Living
Dementia · Learning/Physical Disabilities

- 1 hour to 24 hour, 7 days a week
- Continuity and Companionship
- Shopping
- Personal care
- Sit-in service
- Palliative care
- Reliable and Committed
- Over 25 years experience
- Housework
- Medication
- Cooking
- Laundry

Tailor Made Quality Care In Your Own Home

For information of a free friendly assessment with no obligation please call 01245 409250

www.civicareeast.co.uk / Info@civicareeast.co.uk
47-49 Main Road, Broomfield, Chelmsford, Essex, CM1 7BU

Careers Available. A Worth While Career

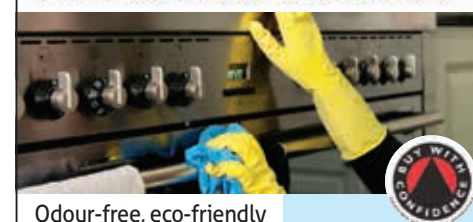
We are expanding and looking for a professional Health Care Assistant to join our Chelmsford team.

All Clients in Chelmsford - No 15 Minute Calls

Civicare East is friendly agency, providing the care you would expect for your family and friends.

If you have a caring nature this could be the perfect job for you!

Essex Ovencleaners



Odour-free, eco-friendly domestic oven cleaning that will have your appliance looking as good as new and ready to use straight away!

- ✓ Trading Standards approved
- ✓ All staff are DBS checked
- ✓ Safe and friendly cleaning process

We clean all kinds of appliances:

- Oven Cleaning
- Hob & Extractor Cleaning
- Microwave Cleaning
- BBQ Cleaning
- Range Oven Cleaning
- Fridge Freezer Cleaning
- Aga Cleaning
- Dishwasher Cleaning

info@essexovencleaners.co.uk

t 01245 451 003 m 07816 762 869

www.essexovencleaners.co.uk



The Bubbles Are Back!

5km Fun Run

Maldon Promenade Park
Sunday 8th April 2018

Central Park Chelmsford
Sunday 5th August 2018

www.farleighospice.org/bubbles



It is because you care that we can

www.farleighospice.org   

Registered charity no 284670