

Broomfield **TIMES**

Issue 54 | Summer 2018

News & events from your Parish Council





EAT . DRINK . CELEBRATE



SUNDAY LUNCH?

Two Courses:
£19.95

Three Courses:
£22.95

*Includes coffee/tea
and chocolates*

Our Sunday Lunch Menu includes traditional home cooked roasts such as Roast Scotch Sirloin of Beef, Rack of Pork and Chicken Breast, each served with all the trimmings!

To book your table call: **01245 440 005**

www.channelsestate.co.uk

- . *Fresh homemade dishes*
- . *Locally sourced ingredients*
- . *Beautiful restaurant views*



Channels, Pratts Farm Lane East
Little Waltham, Chelmsford CM3 3PT



CHANNELS

— Bar & Brasserie —

Broomfield TIMES

As in previous years, this edition has the annual reports from our various Parish Council Committees (see page 16), outlining the numerous activities that have been taking place as well as a breakdown of how your money has been spent, over the past 12 months. With the arrival of Summer we have a number of flower shows and open gardens advertised in this issue plus our very own Village Fun and Games Day on Sunday 8th July – do come along and support us!

Selina Matthews

Cover photo: Mike Letch (Parish Clerk)

**TO ADVERTISE
PLEASE CALL
01843 269513**

Published by
Community Ad Web Ltd
01843 834160

email info@communityad.co.uk
web www.communityad.co.uk



Supporting the
REBUILD OF BRITAIN



The views expressed in any published content are solely those of the contributors. The Publishers and Broomfield Parish Council accept no responsibility for the accuracy of any information contained in the publication. The contents of this magazine including images may not be copied, reproduced, distributed, downloaded or displayed in any form or by any means without the prior written permission of Broomfield Parish Council and/or Community Ad Web Ltd. Unless otherwise specified, the authors of the literary and artistic works in the pages in this magazine have asserted their moral right pursuant to Section 77 of the Copyright Designs and Patents Act 1988 to be identified as the author of those works. The Publishers reserve the right not to publish a submission or part of a submission that they consider defamatory or otherwise inappropriate for publication.

We pride ourselves on our professional,
friendly and reliable taxi service
24 hours a day, 7 days a week



www.farewaytaxis.co.uk



For quicker and easier
bookings why not try
our new app!



30% OFF a wide range of beauty treatments
with this ad | valid Mon-Fri | terms & conditions apply

THE BEAUTY YARD

www.thebeautyyard.co.uk

324 Broomfield Road, Chelmsford

01245 440582



Jim's Décor & Maintenance

**Traditional & Modern Décor
Renovation, Wall Lining & Paper Hanging
Appliance Installation & Repair**



Liability insurance backed
Over 30 years' experience

07802 245129

jimsdecor@hotmail.com

www.jimsdecor.co.uk

Broomfield Contacts

Parish Councillors

John Barnes *Chairman*

Ros Mercer *Vice Chairman*

Geof Garwood *Vice Chairman*

Tim Tranquada *Village Amenities*

Trevor Jones *Finance & General Purposes, Village Hall Charity*

John Blake *Planning Committee*

David Howell | **Angela Thomson** | **Sue Hubble**

Wendy Daden | **Selina Matthews**

Karen Fletcher | **Les Steed**

Mike Letch *Clerk*

Karen Hurrell *Assistant Clerk (Planning)*

Wendy Martin *Assistant Clerk (Civic Amenities)*

Parish Office, 158 Main Road, Broomfield, CM1 7AH

☎ 01245 441660 ✉ clerk@broomfieldessex.co.uk

Parish Councillors can be contacted through the Parish Office Mon, Weds & Fri 10.30am - 12.30pm (answer machine available out of office hours)

City Councillors

Barry Knight ☎ 01245 420045

✉ gbr.knight@chelmsford.gov.uk

Sandra Pontin ☎ 01245 440447

✉ sandra.pontin@chelmsford.gov.uk

James Raven ☎ 07889 650339

✉ james.raven@chelmsford.gov.uk

County Councillor

John Aldridge 33 East View, Writtle, CM1 3NN

☎ 01245 421524 ✉ cllr.john.aldridge@essex.gov.uk

MP

Kemi Badenoch, Conservative

www.kemibadenoch.org.uk

Many problems can be dealt with over the phone or by email. Due to the size of the constituency, the next surgery appointment may not be at a convenient location. If you have an urgent issue, or do not need a face-to-face appointment please contact my office immediately so we can start working on your case as soon as possible.

To book a private surgery appointment, please ring my office on 020 7219 1943 or visit my website where you can request one electronically.

Surgery Dates:

Friday 8th June 16:00 – 18:00pm

Parish Office, Village Hall, Main Road, Boreham, CM3 3JD

For an appointment at the surgery, please send an email with your name and address to: kemi.badenoch.mp@parliament.uk or call 020 7219 1943 / 01799 506038

Community Policing

Contact for PCSOs:

Non-emergency number 101

Or via website www.essex.police.uk

Editorial Committee

Cllr. Selina Matthews *Editor*

Cllr. John Barnes

Cllr. Geof Garwood

Cllr. Daden

Cllr. Mercer

Whilst Broomfield Times is supported by the Broomfield Parish Council, the views expressed within it are not necessarily those of the Council. Please note that the Parish Council do not recommend or vet advertisers.

Contributions

Contributions to future editions are welcome, please email

✉ selina.matthews@tiscali.co.uk

or send hard copy to the Editor c/o

The Parish Office, 158 Main Road, Broomfield, CM1 7AH

☎ 01245 441660

Articles accompanied by photographs are particularly welcome. Please send either professional prints or email full-size JPG files.

Copy Dates

- Copy for the Autumn issue to be sent by 20 July.

General Notes

- Free dog waste bags, graffiti removal kits plus further supplies of plastic bottle bags and cardboard and paper sacks are available from the Parish Office.
- Please refer any play area problems or incidents to the Parish Office.

COMPUTER PROBLEMS?



IS YOUR COMPUTER RUNNING SLOW, CRASHING OR JUST GIVING YOU PROBLEMS?

Then give Micromend a call for free advice

No call-out fee - No fix, no fee

YOUR LOCAL FRIENDLY SPECIALIST FOR

- All PCs and laptops
- Apple Macintosh
- Configuring iPads, iPhones and Android mobiles,
- Internet problems
- Virus removal
- Upgrades and replacement of your old machine
- Install custom-built Windows 7, 8 and 10 PCs
- We can advise on child safety
- We are CRB Registered

Microsoft CERTIFIED IT Professional

For more information on our services visit www.micro-mend.co.uk | email glen@micro-mend.co.uk mobile 07788 925085 | office 01245 463330



Richard Watters
Plumbing and heating engineer

M 07758 252 707

T 01245 860 396

W rgwinstallations.com
E richard@rgwinstallations.com



41 Peggotty Close, Chelmsford, CM1 4XU

Don't let grass grow under your feet



POWERMAX

FREE collection and delivery service (T&CS APPLY)

Tel 01277 651025



Unit 6, Guildprime Business Centre, Southend Road, Great Burstead, Essex CM11 2PZ

In Council

The timetable, agenda and minutes for Parish Council meetings can be found on our website here www.broomfieldsex.co.uk. The meetings covered various procedural matters and updates to ongoing issues. Meetings are open to the public and there is 15 minutes allocated at each meeting for questions from the public. A summary of the most recent discussions is shown below.

Community Infrastructure Levy payments.

Changes in the planning laws now mean that larger housing development sites have to pay a levy to the City Council to help pay for the new infrastructure that is needed to accommodate the increasing population. A small percentage of that levy automatically goes to your parish council. Last year we received £3,600 from the development at Day's Garage and this year there will be another £8,100 from the same site. Sometime in 2019, £96,800 will be given to the parish when the new houses at Hospital Approach are occupied. To find out what is happening to this year's money, keep your eye on the new facilities that will be going into the playing fields behind the village hall

Broomfield Place

The Education Authority has concluded that there will be enough primary school spaces locally if Broomfield Primary is expanded by 15 pupils per year to a two-form entry. This means that the land around Broomfield Place, which was earmarked by the County Council for a new school plus a housing development, is now available for other uses.

The land and the house were left to the local community when Miss Copland, the last owner, died in 1941. The County Council have owned it ever since and there is a very good chance that they will want to sell it quickly. However Miss Copland was a great benefactor to the Parish and the council believes that her legacy should be preserved. The council has applied to register the land as an asset of community value i.e. a piece of land that has, or may be an asset to the residents

and that should not be sold-off. We hope that this will be successful and that the land may be preserved for the public benefit. We also hope that the County Council, who profited greatly from the sale of the house all those years ago, will support us in a very positive move for Broomfield.

Parking

Parking on pavements continues to be problem, particularly on Main Road. The parish council is actively searching for partners to help fund a wheelie bin sticker campaign, poster on page 14. It will be at a cost of 33p per sticker. Please contact the Clerk should you wish to volunteer your company to advertise on the bottom of the sticker. We are exploring options to extend the campaign into other parishes.

Litter

Litter is a perpetual problem in the parish. David Howell recently cleared an area in Hollow Lane and removed six bags of litter, including an industrial acetylene bottle which required specialist disposal. Sue Hubble also organises regular litter picking sessions in Spring and Autumn with the next one to be held on 15th September. See page 12 for further details.



The rubbish bin in Mill Lane has now been replaced following vandalism of the original one. The cost was £300 - equivalent to the annual Parish Precept for 6 houses!

Christmas Day Lunch 2018

There have been some encouraging initial discussions about serving a Christmas Lunch in the Village Hall for people who would otherwise be alone. Although the logistics of transport and procuring and preparing food are manageable, the main problem is identifying those who will be invited or nominated to attend. Unless an organisation is willing to take this on, the project will not go ahead.

DISTRIBUTE
YOUR LEAFLETS
with this magazine
(3000 copies)

£45 + vat per 1000

Call Community Ad
on 01843 834160
or email
info@communityad.co.uk

MAKE YOUR CHILD'S DEVELOPMENT MORE FUN!
TRY RUGBYTOTS
Our dynamic weekly play sessions enable boys and girls aged 2-7 to develop their social and physical skills in a fun, positive environment.
For more details, just call or email:
0345 313 0422
adrian@rugbytots.co.uk

rugbytots.co.uk
The world's favourite rugby play programme

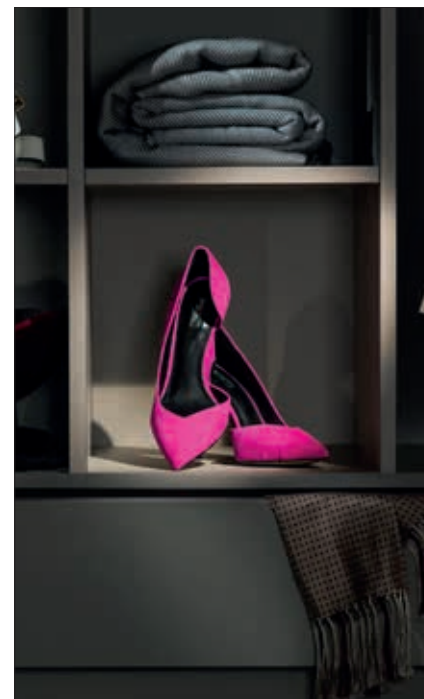
Kool Runnin's
Mobile Vehicle Air Conditioning & Diagnostics

- Air Conditioning
- Diagnostics & Fault Finding
- System Check
- Refrigerant & Oil

Call today on 07506 664331
bazecceleston@gmail.com

Fully licensed to keep your vehicle air conditioning system fully functional, safe and runnin' kool.
www.kool-runnings.co.uk

Wherever you are, I can come to you! Covering a 25-30 mile radius



EXQUISITE
FITTED
LUXURIOUS
DESIGNER
AND THAT'S JUST THE WARDROBE



SLIDEROBES®

Like no other wardrobe

Get in touch to arrange your free at home design appointment

Call 01268 531144 | SLIDEROBES.CO.UK

Unit 3, Sovereign Park, Cranes Farm Rd, Basildon SS14 3JD

In Council (continued)**Defibrillator**

The Council have been looking into installing a defibrillator to be sited at the Village Hall. A resident with experience in first aid and first response has offered assistance in securing grant money and support from St John's Ambulance. Assistance with training for councillors and residents has also been offered and the project is making good progress.

Air quality monitoring.

Following the publication of Chelmsford City Council's air quality report, one independent test kit has been purchased for evaluation and to compare results. If it proves useful, additional kits can be installed where needed. Kits have a short shelf-life and must be purchased when needed.

Highways

Winter has decided to come and go (and come again!) causing havoc with the roads, in particular potholes. Many of Broomfield potholes have been fixed recently but Highways have an on-line tool to report any problems and inform you of repairs. Report highways issues online at www.essex.gov.uk/highways

Crime Stoppers

Crimestoppers is an independent charity that gives people the power to speak up, stay safe and stop crime – 100% anonymously - either by calling the professionally- staffed 24-hour hotline on 0800 555 111 or using a non-traceable online form via the Crimestoppers website at www.crimestoppers-uk.org. If you would like to do more, Crimestoppers in Essex is also looking for volunteers to join its team and help keep communities safer. For more information, visit crimestoppers-uk.org, or contact Stuart Rawlins at stuart.rawlins@crimestoppers-uk.org



Domestic • Commercial
New Build • Rewires
Extensions & additions
Garden lighting • Fault finding
Testing and certification
Fully insured • NICEIC registered

Call us on
07557 684723 or **01245 233282**
email alex@fairstadelectrical.co.uk
www.fairstadelectrical.co.uk

A & W Gowers Ltd
Specialist Joinery Manufacturers

Experienced professionals specialising in bespoke staircases, conservatories, windows, doors and all types of fitted furniture

Please contact us for personal expertise and service

No. 4 The Grange, Warners Farm, Howe Street,
Great Waltham, Chelmsford, Essex CM3 1JN
01245 362737 | info@awgowers.co.uk
www.awgowers.co.uk

**South Hanningfield Tree Surgeons***Local, Professional, Affordable*

lukeharlow1@btinternet.com - Email
01245 400054 - Office
07393 634016 - Mobile

Here at South Hanningfield Tree Surgeons, we pride ourselves with being the best; offering professional services in all areas of tree and landscaping practices.

With our team of trained, experienced Arborists, we can deliver the very best in looking after your treasured grounds, estates and gardens.

We offer a comprehensive range of services and management including -

- Trimming, pruning, pollarding and all crown reduction work.
- Hedge trimming, lowering and removal.
- Precision tree felling and stump removal.
- Contract work for landscaping and garden maintenance.
- Veteran and Ancient tree management.
- Woodland management.
- Tree and hedge planting with complete aftercare.
- Seasoned split logs and woodchip for sale.
- Fencing including direct replacement and new.
- And much, much more...

We are fully insured with over £15,000,000 in liability insurance including Public, Employers and Indemnity.

Our teams are trained to the highest standard for your peace of mind. All documents are available upon request.

So call us today for a free quote on all your tree, hedge and garden needs. We look forward to hearing from you...



@treesurgeonguy





Seniors Lunch

Another successful “Senior Lunch” was held on Wednesday 21st February with 120 Broomfield Parishioners in Broomfield Village Hall. We had a lovely meal cooked by Chicks Catering; a full roast with all the trimmings plus Christmas Puddings once again supplied by local company LillyPuds (all very delicious!) and the wine flowed too! This year’s entertainment was supplied by Cllr Tim Tranquada who had us all take part in his version of Bingo followed by the Ukulele Group from U3A who had us toe tapping and singing along to some well-known tunes.

Raffle Prizes were donated by Councillors, Staff, and Morrison’s and donations were generously given by Broomfield Orthodontists and Woollards Charity.

Lillypuds

Following many years of making puddings for friends and family, I created LillyPuds in 2015 to introduce a tried and tasted Christmas pudding recipe to consumers. My aspiration is to restore the faith in our Great British pudding! I bring to market a festive delight that is scrumptiously light and easy to eat and with all the traditional spices and flavours to be expected of a Christmas pudding. Our traditional pudding has won a Great Taste Award and both the traditional and gluten free varieties received excellent national reviews in 2017.

The key difference with our products is a LillyPud is sweetened with the sugars in the fruit. Just 5% sugar is added to the mix as an ingredient. We also omit cheap fillers such as mixed peel, add less flour and steam the puddings for less time. The resulting pudding is so easy on the palate, not claggy, sticky and treacly!

In addition, our product styling has a point of difference using nostalgic, rustic cartons ideal for gifting as well as dining.

I have lived in Broomfield for over 35 years with my hubbie, Rod, and our 3 children, Joanna, Jessica and James all grew up in the village. It’s a pleasure now to give back a little something

to the community by supporting the Christmas Senior Citizen’s lunch – I hope everyone enjoyed the pud!



ADVERTORIAL

Has Your Double Glazing Steamed Up?

Established for over a decade Cloudy2Clear windows have become a leading company for glass replacement. Issues with double glazing can often be gradual and may only be noticed during a clear sunny day or during the winter. A failed glass unit may no longer provide you with the protection you need or be energy efficient. Why not spend a few minutes checking your home to see if you have any failed double glazing? If you act now you can avoid these problems.

Now, you may think you need to replace the

whole window including the frames and all the hardware, however Cloudy2Clear have come up with a simple and cost saving solution... Just replace the glass!!

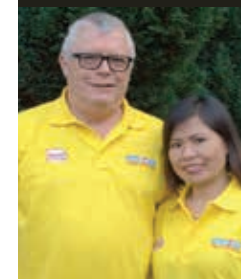
If you see condensation in your windows just visit our website or give us a call on **0800 61 21 118**. We will send out our highly experienced engineers for a free no obligation quote. A Cloudy2Clear quote takes on average no longer than 20 minutes. Once the quote is completed, we will sit down with you and explain the problem and tell you how we can fix it.

With years of experience Cloudy2Clear have a wealth of knowledge and are recognised as a Which Trusted Trader, plus our work is backed by an industry leading 25 year guarantee. Cloudy2Clear also replace faulty locks handles and hinges on all windows and doors.

Your friendly local Cloudy2Clear specialist is Chris Miller and he services the Broomfield & Chelmsford areas.

So, if your windows are steamed up, broken or damaged give Chris a call for a free quotation on **0800 61 21 118**.

“Cloudy2Clear GUARANTEE All Customers That An Average Quote Will Take No Longer Than 20 MINS!!!”



Cloudy2Clear Windows... Service With A Smile!

Cloudy2Clear Are A...



Which? Trusted Trader

All Glazing Backed By Our

25 YEAR GUARANTEE



Priority Freephone
0800 61 21 118

www.cloudy2clear.com

Broken Or Damaged Windows? Faulty Locks, Handles, Hinges?  

What is your pet hate?

Apart from inconsiderate drivers parking their vehicles on the pavement, so that wheelchair users or parents with buggies cannot get past, mine is litter on our streets! I wonder just how many litter louts realise that the fine for dropping litter is being increased from £75 to £150. People who litter our streets could face increased penalties while the owners of vehicles could be fined if rubbish is thrown from their car by any driver or passenger, under measures being consulted on as part of a national litter strategy.

Twice a year in spring and autumn, litter picks are arranged by parish councillors and residents are invited to help. Although the amount of litter we collect is always very disappointing, we are never disappointed at the help we receive from residents without complaint and always with a smile and a joke. What a shame though that there is a need to do this.

It has been pointed out that after "rubbish collection day" there is always more litter evident, but if everyone just picked up litter outside their own properties, it would be a big help. No-one wants to live in a village strewn with litter.

Our next litter pick will take place on Saturday 15th September, from Broomfield Village Hall at 10.30 a.m. You are welcome to just come along for the home made cake and refreshments.

Keep a look out for this sign, kindly designed by pupils from Broomfield Primary School!

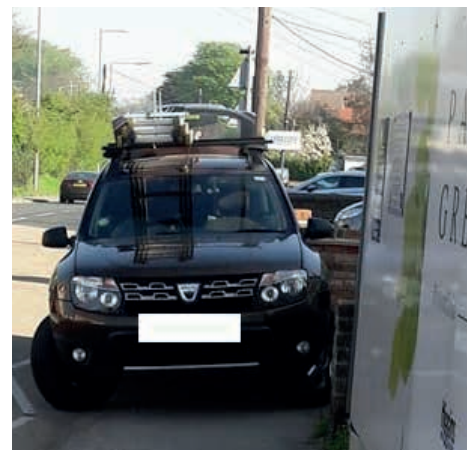


Sue Hubble

Pavement parking

With an ever increasing number of cars on our roads we often struggle to find a safe place to park. Please though, be mindful of those using the pavement, particularly wheelchair users and people pushing buggies. You can use the poster overleaf to spread the word that blocking the pavement with a vehicle is not as thoughtful as you may think.

Wendy Daden



To advertise
please call 01843 269513

WANTED CARS & VANS UP TO £400 PAID FOR SCRAP VEHICLES



GUARANTEED INSTANT PAYMENT
SAME DAY COLLECTION
ALL VEHICLES CONSIDERED
ENVIRONMENT AGENCY REGISTERED

www.scrapcarsessex.co.uk

07956 880667 • 01621 851392

BROOMFIELD OPTICIANS

- Professional local eye care
- Bespoke service
- Over 20 years experience as a qualified Optometrist
- Proud to provide that individual attention to detail
- Friendliest caring team in Chelmsford

Call now to make an appointment with Louise
Mr Anish Chauhan, Optometrist
24 Broomfield Road
Chelmsford, Essex CM1 1SW

T. 01245 352803
www.broomfieldopticians.co.uk

MYERS SCOTT TECHNOLOGY SUPPORT EST.2004

Services offered:

- Technology Support for home and business
- PCs and Laptops supplied and repaired, wireless and wired networks, Apple repairs.
- Website design build and maintain
- Portable appliance testing
- Photo, film and cine film scanning and digitizing
- CCTV camera installation

Contact:
Myers Scott Ltd
01245 362197

COOPER KEYS CUTTING EDGE

- Keys cut to pattern, number or locks supplied
- Car keys / Remote Programming
- Classic car key and lock specialists
- DIY • Tools • Hardware • Decorating
- Electrical • Gardening

01245 251399

cooperkeys@live.co.uk



5 The Parade Woodhall Road, Chelmsford, Essex CM1 4BA

PLEASE DON'T PARK ON THE PAVEMENT

WHY?

Children step
into the road

Pushchairs can't pass

Blind people bump into them

Kerbs crumble; which
cost us all
money!

Polite request from
Broomfield Parish Council

From the County Council

Opportunities for Community Funding

During 2017/18 the County Council launched three separate initiatives that give local communities access to funding to make improvements in their local area:-

The Local Connections Fund – £500,000 committed to support community-led activity, using a crowdfunding platform known as The Essex Crowd Movement. www.spacehive.com/movement/theessexcrowd

The Local Services Fund – £500,000 to support more formal, traditional services by being more locally responsive and to improve local places. www.ealc.gov.uk/local-services-fund/

The Essex Lottery – The lottery is open to anybody aged 16 or over who is physically based in Essex. Tickets cost £1 and the Jackpot can be £25,000. www.essexlottery.co.uk

If you find you are struggling to attract funding for your organisation, why not visit, Essex for Communities, a funding database which can help you to find suitable grant funding opportunities that could help enable delivery of your projects. www.idoxopen4community.co.uk/essexcommunity

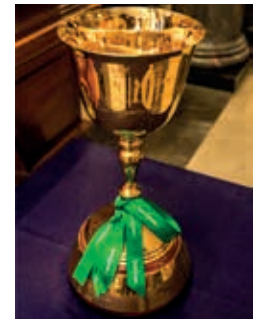
Essex County Cricket Club

And finally! Now that the Cricket season has begun a reminder that, as County Champions, Essex County Cricket Club's players and employees celebrated their historic victory at a special ceremony at County Hall. The Club's new President, David Acfield, who played more than 400 first-class games for Essex and won four championships, also gave a stirring speech at the event.

Opening of new Children's Library and Family Hub

Chelmsford's new children's library and state-of-the-art hub for family services was officially opened in March after a £316,000 revamp. This unique facility was created thanks to two major funding streams - the Community Infrastructure Levy (Chelmsford City Council) and the "Library Opportunities for Everyone Innovation Fund" which is managed by Arts Council of England. The makeover project has put the library at County Hall at the heart of family support services in the City, where library employees, health and social care workers, along with staff and volunteers from other support agencies have come together to create a one-stop shop for free family services.

Almost half a million people visited Chelmsford Library in the past year, which makes it the perfect venue to provide these other vital services under one roof. Why not pay a visit to see what the Library has to offer.



If you have any problems about County Council matters please let me know on 01245 421524 or email cllr.john.aldridge@essex.gov.uk.

My blog can be found at
<http://dnn.essex.gov.uk/chairmanblog/Home.aspx>

John Aldridge CC

ANNUAL REPORT

FOR BROOMFIELD PARISH COUNCIL 2018

Chairman's Annual Report 2018

Councillor John Barnes

It has been an interesting year for me, I took over as Chair of Broomfield Parish Council last May following Cllr John Blake: he was not Chairman for long but nonetheless did a great job and left the Council in a strong position.

For those who don't know, we have four main committees; Finance, Planning, Village Amenities and Village Hall. All have their role to fulfil, dealing with everything from setting the annual budget to ensuring that the footpaths are kept in good order. You can read about their accomplishments in the reports from each committee, but there are some things I'd like to mention personally.

We knew that the kicking wall was not getting as much use as it might as it was often blocked out by cars parked in front of it. The Village Amenities Committee took some time to investigate where it could be moved to and conferred with the football club and Consultants to ensure it would comply with all the regulations. Placing it where it is now did involve the football pitch being moved slightly further down the field but this was done with full consultation with the football club who I would like to thank for their help in making the move as painless as it was. There is more to be done, and thanks to a £10,000 grant from the Communities Initiative Fund, there will soon be an asphalt playing area in front of the wall.

Councillor John Blake has done an invaluable job on the Neighbourhood Plan. This project

is vital if we want to have an input into the future planning process and it is the best possible way for you to get involved in shaping your community. The information you have already given in the survey has given us a good understanding about the needs and aspirations of our villagers. John and his team are doing an invaluable job.

Councillor Sue Hubble and Carol Jones do great work running Stay and Play on a Monday, and Cllr Thomson runs our very popular first Wednesday of the month coffee morning.

Cllr Sue Hubble also leads our efforts to keep litter under control by organising regular litter-picks.

Councillor Wendy Daden has led a small team raising awareness of the consequences of poor and inconsiderate parking around the village. As many of you know, parking on the pavement causes inconvenience and danger to parents with buggies and young children, the elderly and disabled and this is one practice we want to end.

We must all thank Cllr Tranquada for the time and work he puts into maintaining the greens, footpaths and open spaces of the Parish. From the crocuses in spring, to the festive lighting in the telephone box, the village is a better place for the Village Amenities Committee.

Going forward, huge amounts of work have been done in developing plans to build an

Adventure Cycle Way on "The David Smith Field". We now have planning permission and are obtaining quotes for the work. We have funding available and grant applications are out with grant providers. Very soon the Council will be in a position to make a final decision to proceed with the work. Councillor Jones has done a great job to bring this project to where it is now and we are very grateful.

I hope that villagers have noticed the work done to improve the crossing at Erick Avenue. The improvements are not quite what we wanted; we campaigned long and hard for a fully light controlled crossing and that is something that will become essential when people start to move into the Day's Development. Essex Highways realised that the old crossing was dangerous but insisted that the refurbishment was all that they could afford. We would like to thank our County Councillor John Aldridge for everything he has done to fight our corner.

The Parish Council has a new Clerk. Early in the year Karen, our Clerk decided that she wanted to reduce her working hours and focus on supporting the Council's work on planning, the Neighbourhood Plan and the Local Plan. The Council agreed and on behalf of the Council I would like to thank Karen for her effort and commitment on behalf of the Village during her time as Clerk. We knew that replacing our Clerk would be difficult but we were lucky to secure the services of Michael Letch who has worked as a Parish Clerk for many years but also already knows our processes and systems well. Mike has settled down really well and has already made a very positive impact.

One change Mike has put in place is to merge the management functions of the Hall and the Parish. Not everybody may know that the Village Hall buildings and land are owned and managed by a trust of which the Parish is the sole Trustee.

Bringing the two together will streamline our processes and save money at the same time.

We do all we can to keep the Village informed; we have Broomfield Times, more than ably edited by Councillor Selina Matthews, a fantastic webpage which has been updated this year, a Chairman's blog, a Facebook presence and of course, the minutes of all meetings which are published for all to see. However this all generates relatively little feedback. We recognise that communication can be a problem and it is in everyone's interest to make sure that we all know what is going on. Your Councillors are all unpaid volunteers, but you are the reason they stood for office. If something is not right, if you are concerned about something, or if you want to see a change in the way things are done, then talk to them. In short, if you are happy about what we do, tell everyone. If you are unhappy, tell us!

Looking to the future, we have two further projects we would like to push forward but need volunteers to help. We want to mark the 125th anniversary of the Parish Council in 2019 by celebrating the enormous changes that we have seen since 1896, but we need people to come forward to take part in the planning and preparation. We have also discussed the possibility of serving a Christmas Dinner in the Village Hall on Christmas Day for people in the Village who would otherwise be alone. Again we need volunteers to help with the organisation and delivery of what could be a fabulously valuable project. Can you help?

Finally we have a very strong Parish Council of committed and active Councillors, I would like to thank them all for everything they do. In addition we have a great team of staff who work tirelessly to deliver the Parish Council and Village Hall services, we are all very lucky.

John Barnes

Financial and General Purpose Committee Report 2018

Councillor Trevor Jones

Looking at the budget for the last year, the council has kept itself in the black and even made a few savings while maintaining the services as before.

Due to changes in the laws around housing benefits, the amount of money that the council can raise in its precept has dropped significantly, and this was the last year that the Government provided any support to offset this loss. In spite of this, the Council is pleased to say that the precept has been kept at £54 a year for a band D property, but it does mean that we will have to keep a very close eye on the expenditure.

One way to raise money is to apply for grants and we were very pleased to receive £8,000 from Essex County Council which will help fund the improvements to the kicking wall in Angel Field. There have also been grants provided to help offset the money spent on the neighbourhood plan so it is not all bad news.

Don't forget that grants can flow both ways and one of the things the Parish Council can do for you is support your organisation with a grant, but it is disappointing to see that very few organisations have taken advantage of this. There was only one significant award made this year when the Village Hall received £9k to pay for a new partition wall in the hall. Events like the Village Games and the Seniors Luncheon also received support from the Parish, but it would be good to see some new organisations coming forward for grants.

The council has invested a significant amount in planning matters like responding to the Local Plan and developing the Neighbourhood Plan. If

the Council wants to make a strong case that will stand-up to scrutiny, then professional support is needed to make the point and I think you will agree that the amount of housing allocated to the parish is much more reasonable now.

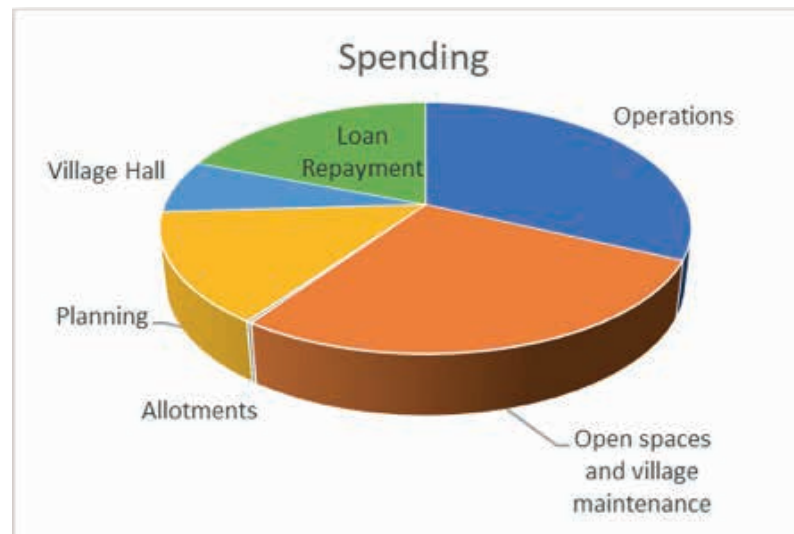
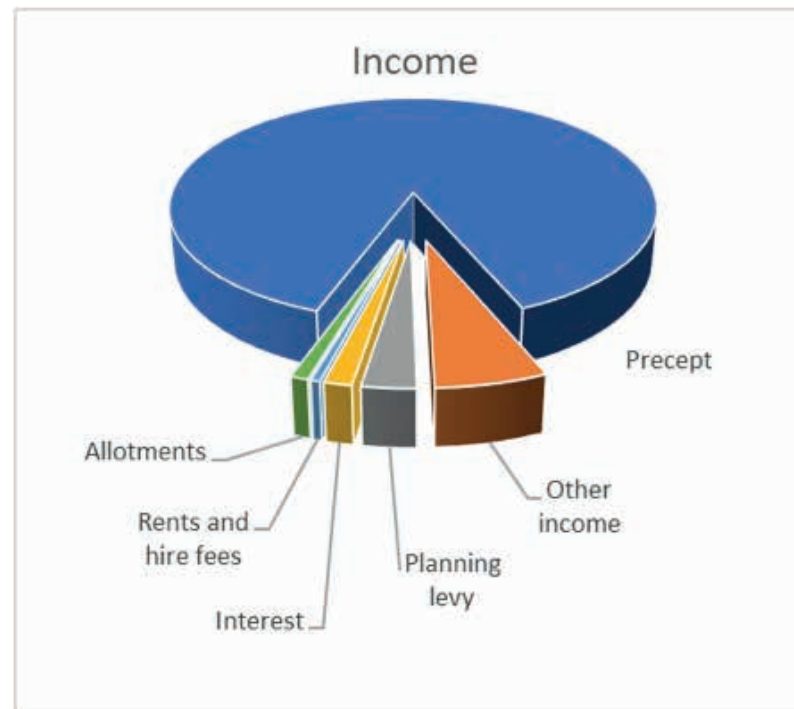
Moving down to the more routine, but essential work, the council funds or supports Play in the Park activities, litter picks, allotments, Centenary Wood, tree maintenance, grass cutting in the recreation grounds and village greens and even a few festive lights in the telephone booth.

We received £3,639 Community Infrastructure Levy from the Day's Garage development and there will be more to come in 2018.

The Public Works Loan of £220,000 (entered into in 2014 to provide funds to re-develop Broomfield Village Hall Charity) is being repaid by annual instalments of £33,456 and the balance outstanding at the year-end was £81,562. We currently have reserves of £63,000 as well as earmarked reserves to cover the work we know is going to happen, so we are in a strong financial position to provide funding for projects included in our Parish Council Strategy.

A summary of the unaudited accounts for the year ended 31st March 2018 is shown on the charts and a copy of the Audited Accounts will be available from the Parish Office once the Audit has been completed. If you have any questions about the Accounts please direct these to the Clerk at the Parish Office who will provide any further information you may request.

Trevor Jones



Planning and Property Committee Annual Report 2018

Councillor John Blake

Over the last year, you've probably noticed more buildings coming out of the ground. North of Hospital Approach, 165 new homes and eventually a 90-bed care home will be built. The mostly delapidated buildings of Day's Garage are now gone, with 37 new homes replacing them. At the far end of Hollow Lane, one developer has already built their 60 houses, completely taking the 'hollow' out of Hollow Lane in the process. Now pegs have appeared in the field opposite, marking the path of the new access road into the eastern section of this site, which will produce another 200 houses. Not to mention the increasing blocks of futuristic housing east of Essex Regiment Way, much of which lies in Broomfield Parish.

This flurry of action after years of inactivity during the recession is a sign that property prices have shot up to the point where developers are keen to build houses again. However, these plans have been in the pipeline for a long time. The Planning Committee's work over the last 12 months has been more to do with the next lot of plans – Chelmsford's new Local Plan for 2021 – 2036.

A year ago, we were going through Round 2 of the Local Plan consultation. This January – March saw the 3rd and final round. Thanks to all the residents who came to our Drop-In event in March and to all those who responded to Chelmsford's consultation.

If you came, or read the Parish Council leaflet or articles in Broomfield Times, you'll know that we have achieved a huge amount over the last 2 years. 1,700 dwellings (plus probably thousands more linked to a proposed new road) have been cut down to 450. Nonetheless, we have to remain on our guard, because the developers concerned are expected to seek to reverse these reductions. They can do this by appealing to the 'Examination in Public', expected in October. This involves



Hospital Approach

an independent Inspector, appointed by the Government, considering if the Chelmsford Local Plan is 'sound' – if not, changes must be made.

You can read the Parish Council's response at www.broomfieldessex.co.uk/the-local-plan-a-quick-summary. In brief, while we are pleased by the reductions we have achieved, we are still concerned about important aspects of the Local Plan. We argued that further sites must be identified along the A12 and A130 (south) corridors where there is more infrastructure. We also intend to put these points to the Inspector in October.

There is much more I could say if space allowed, but it doesn't! In conclusion, I would like to thank the parish councillors on this Committee, as they put in so much time and effort for free every month to try and make sure that Broomfield remains a good place to live. I've also really enjoyed talking with the residents who've come to our Open Days and committee meetings over the last year. Please come again – you're welcome at every meeting. It's great to hear your views and to know that you care about the future of our village.

John Blake
Chair, Planning and Property Committee

Neighbourhood Plan Annual Report 2018

Councillor John Blake

The Neighbourhood Plan is now into its second year. We hope to have the bulk of the work completed over the next 6 months, with a local referendum in the Spring of 2019 to give it the go-ahead or not.

What is a neighbourhood plan, you may ask? It's a way for a village or community to plan its future development over the next 20 years. It's mainly about planning – for instance, where new houses shops or offices should be built, of what type, what they should look like and what infrastructure should be provided. A neighbourhood plan can't stop development, but it gives local people more say about what happens. So this is our chance to have a say in how our village develops, rather than leaving it entirely to developers and the planners.

A year ago, we had just circulated an extensive residents' questionnaire. Thanks to everyone who completed and returned it - it gave us an excellent picture of what residents like about Broomfield and what they would like to change. It took a long time to analyse all the data - you can read the summaries on our website: www.broomfieldessex.co.uk/np

After that, we pulled out the main points from the results and put them into a short 'Issues and Options' paper. These are the main things we

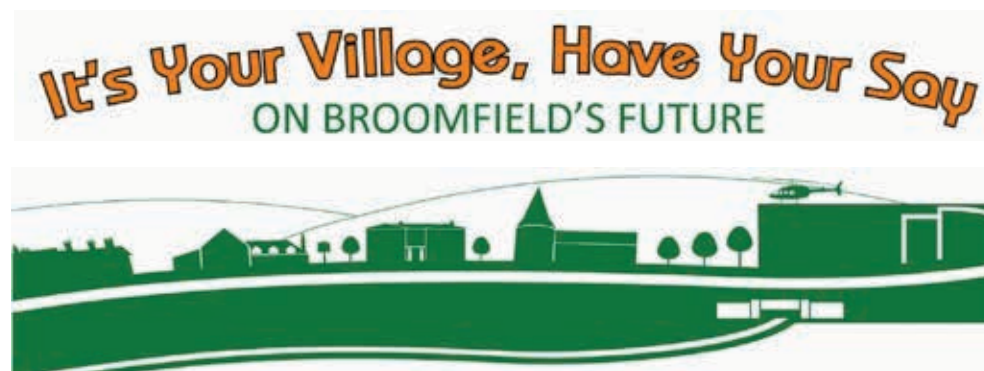
hope the Neighbourhood Plan can address - for instance, local people's concern about traffic, their love of the countryside around the village, what sort of houses should be built if Broomfield has to accommodate more housing and so on. You can also read this paper on our website.

We have conducted a survey of local 'Stakeholders' - for instance, local businesses, organisations and societies, service providers and landowners. Most recently, we have appointed an experienced consultant to help us make sure the Plan has robust planning policies that can hold water when put to the test. The cost should all be covered by a grant from the government.

If you're reading this before Wednesday 23rd May, please come to our Open Evening, 7pm onwards. We will have displays showing the results of the questionnaire and how we think the Plan might develop from now on. We want to hear everyone's views, so that we can sure the Plan reflects local opinion as far as it possibly can.

Please keep an eye on the website to keep up to date with our progress and to make sure you don't miss any opportunities to have your say on Broomfield's future.

Broomfield Neighbourhood Plan
Steering Group



Village Amenities Committee

Councillor Tim Tranquada

Village Greens:

The extra daffodils planted behind the Telephone Box and in front of Madelayne Court have provided a very colourful display this spring. Local volunteers, including Parish Councillors, took the responsibility for over-wintering pots of new crocus bulbs which when flowering could be planted in the spaces between the established crocuses on Church Green. A similar process was undertaken last year to enhance the bulbs on Angel Green and extra daffodil bulbs were also planted on Parsonage Green – all resulting in very attractive displays.



Crocuses Angel Green

Centenary Wood

This year, 2018, is the 100th anniversary of the Broomfield Scouts and they will be planting a commemorative tree in Centenary Wood later this year. It is also planned to plant indigenous primroses around the tree.

Reminder: The Centenary Wood working party of volunteers meets on the 1st Tuesday morning of each month to carry out maintenance tasks in the Wood. These regular tasks involve grass cutting; pruning of the passageways between the area of shrubs; weeding the wild flower beds; replenishing wood chippings around the benches and removing brambles etc growing in the wrong place. We meet at 10:00 am on the allotment site to collect our equipment.

Village Play Area and Village Playing Field:

The all-weather tarmac surface for the Kick/Sports wall will be completed in June 2018. We have been offered the temporary loan of an outdoor table tennis table and this will be placed by the 'teenage shelter' near the MUGA. If the installation proves successful there is the potential to have an upgraded table tennis table plus a suitable surface to site it on.

Parish Pathways Partnership (P3):

The P3 group of volunteers found their 'maintenance skills' handy when they removed a fallen tree blocking the footpath through Border Wood.

Reminder: The P3 group of volunteers meet on the 3rd Tuesday morning of each month to walk specified Parish Public Footpaths and to



Path clearing in Border Wood

undertake a 'monitoring' of those footpaths in order to carry out remedial repairs/maintenance where necessary. We meet at 10:00 am outside St Mary's Church. Other walks can be undertaken with The Broomfield Footpath Society whose walks extend beyond our Parish to interesting places; they can be contacted on 01245 698175/441021.

Allotments:

If you wish to put your name down on the waiting list for a half or quarter plot on the allotment site then contact the Parish Office.

Tim Tranquada



Planting on Church Green

Broomfield Village Hall

Councillor Trevor Jones

As we prepare this newsletter at last the sun has come out from behind the clouds and we reflect upon what has been a long and cold winter. We would like to extend our heartfelt thanks to all the people who came to help us clear snow and keep the village hall open and active. We also thank all the staff who made it to work despite the difficult conditions.

Our stay'n'play children enjoyed an Easter egg hunt in the park before the Easter holidays and the Monday mornings are enjoyed by all those who attend. We always welcome new faces to join the fun.

The final plans for the Adventure Cycleway have been prepared and will be placed before the Parish Council for approval at their meeting in May. If all goes well and the plans are approved it is hoped that we can commence work by the middle of September. By choosing this time we hope it will mean the minimum of disruption for everybody.

The plans for the Village Games are now nearly finalised and we have a wonderful programme of events which you will see from the poster in this copy of the Times. Please come along to support and enjoy the day. It promises to be great fun for all on Sunday 8th July from 11.30-3.30pm.

Trevor Jones

www.flatpackready.co.uk

John Nicholson
Carpenter
Painting & Decorating
Handyman
Flat Pack Assembly
Door Hung
And More...

07597 851000
flatpackready@gmail.com

Pleshey Tree Services
Tree Surgeons & Arborists

Pruning & Shaping • Felling & Removing • Planting & Advice
Friendly, professional service • Free quotations & advice

www.plesheytreeservices.com
tomcrees@plesheytreeservices.co.uk | 01245 362988

NPTC qualified | Council approved | Work compliant to BS3998 & BS5837 | Fully insured

Broomfield Cottage Gardeners' Society



SUMMER FLOWER & PRODUCE SHOW

Our Summer Flower & Produce Show is on Sunday 15th July. Everyone is welcome. Members are entitled to exhibit at our Shows without payment, non-members are entitled to exhibit on payment of 50p per Class. The Show is held in the Broomfield Village Hall from 2.00pm to 4.30pm. Exhibits MUST be staged between 8.30am and 10.30am on the day. Admission to the Shows is free for members and £2.00 for non-members. Plants, vegetables, raffle tickets and refreshments may be purchased at the Shows. If you are not into plants why not have a go in the cookery & preserves, handicrafts or photography sections? Contact Christine on 01245 355505 or Selina on 01245 443108 or email: BCGSshowsecretary@gmail.com. We look forward to receiving your entries by Wednesday 11th July please.

Show Challenges

Every year we have a number of challenges for our members to show what they can achieve, starting from the same point. This year for the Summer Show we have a Fuchsia challenge (Class 143) and a Homemade Loaf challenge (Class 410). For the Autumn Show we have the Dahlia

challenge (Class 101), the Chrysanthemum challenge (Class 117) and a Chilli challenge (Class 221).

BROOMFIELD BIRDS/BCGS EVENING – 14th MARCH

The Broomfield Birds are a group where ladies from Broomfield get together on a monthly basis for organised events. We were invited by the group to deliver an interactive presentation on planting and growing herbs and salad leaves. The evening was very well attended with approx. 40 ladies taking part. Roger Hardy, one of our prior Chairmen, delivered a compelling talk sharing his experience of growing plants. At the end of the session we had a wide selection of herb plants which could be purchased and each of the ladies were invited to fill a terracotta pot with compost and lettuce seeds, which they all enjoyed. By now they should all have a healthy lettuce crop. Hopefully our presentation will have encouraged some of the attendees to keep on sowing and growing. All monies generated from the evening went to our 2018 charity, Grapevine Essex for people with learning disabilities.



AGM

Our AGM was held on 28th February, and the below committee members were elected for 2018:

Chairman	Roy Hooper
Secretary/Membership Secretary	Angela Wild
Treasurer.	Ron Marlow
Shows Secretaries	Selina Matthews; Christine Welch
Open Gardens Manager	Dick Chapman
Advertisements Manager	Angela Marriage
Social Media Manager	Annette Swift
Trading Centre Manager.	Malcolm Deacon

Non-Committee positions:

Newsletter Editor	Philip Richards
Talks Manager.	Maureen Etridge

OPEN GARDENS

For all of our members the Evening Garden Visits start on 24th May with a visit to Nick Smiths Nursey in Roxwell. Visits to members' gardens commence on 7th June on the first and third Thursday of the month, 7pm until 9pm, finishing on the 16th August.

COMMITTEE VACANCIES

There are currently two vacancies on the Committee which need to be filled from the next AGM in February 2019 - Treasurer and Talks Manager. If you are interested or know of anyone who might be interested in one or more of these roles please do not hesitate to contact any member of the Committee.

FACEBOOK SITE

We now have a Facebook page where regular updates are issued. Please search in Facebook under "Broomfield Cottage Gardeners Society" or use/ type the following link into your browser: <https://www.facebook.com/groups/355859514864259/>

MEMBERSHIP

If you would like join the Society, please contact Angela Wild (Membership Secretary) on 01245 441412 or for more information go to www.broomfieldcottagegardenerssociety.co.uk.

Philip Richards



Broomfield Cottage Gardeners' Society



FLOWER & PRODUCE SHOW

Sunday 15th July
at

Broomfield Village Hall

rear of The Angel, Main Road, Broomfield, CM1 7AH

2.00 - 4.30pm

Plant Stall Raffles

Refreshments

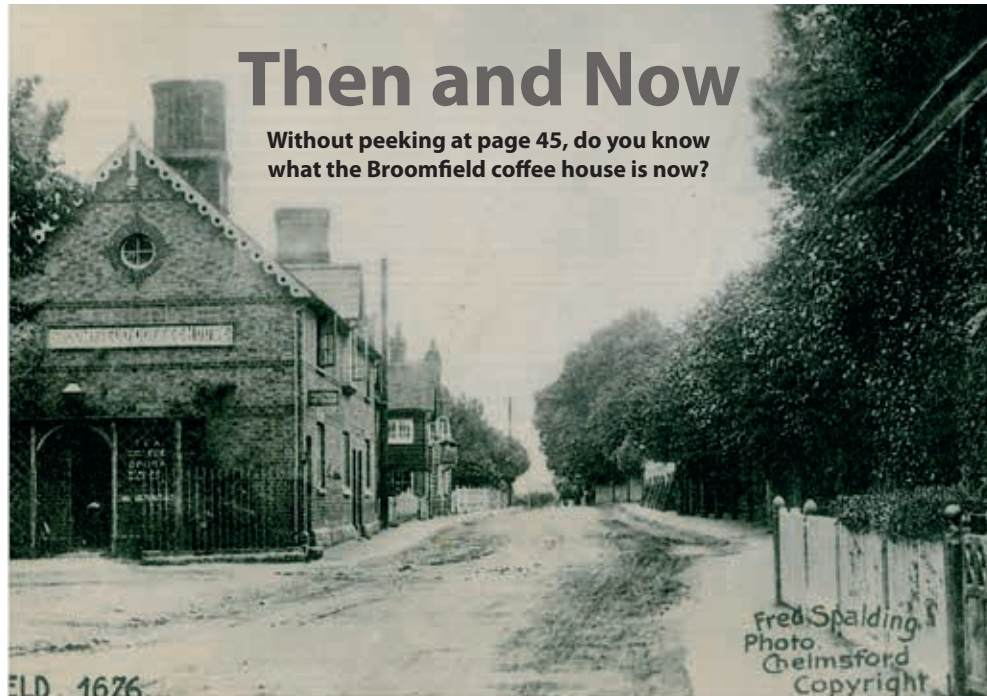
For Schedule & Entry Form please phone Show Sec 01245 443108 or collect from the Trading Centre (Fri 2-3pm, Sun 10-noon)

Admission £2 Members FREE
www.broomfieldcottagegardenerssociety.co.uk

Broomfield Footpath Society

Despite the wet and chilly start to the walking season our Sunday walks have been reasonably well attended this year. Seventeen walkers ventured out for our final Sunday walk this side of summer, to ramble around Danbury Common followed by liquid refreshments at the Cricketers.

A highlight of the walk was hearing both a cuckoo and a nightingale. We switched to our evening programme of walks on 16th May, meeting at Church Green every Wednesday at 7.15 p.m. See the programme for more details.
Selina Matthews



Broomfield Footpath Society - Programme Year 2018

**All walkers to meet at Church Green, Broomfield.
Lifts available for those without cars.**

Wednesday evenings meet at 7:15pm.

May 30	Square & Compass, Fuller Street	Cars to Fuller Street
June 6	Rose and Crown, Great Waltham	Cars to Great Waltham
June 13	Writtle – Admirals Park	Cars to Writtle, (Duck Pond)
June 20	Rodney Inn, Little Baddow	Cars to Rodney Inn
June 27	Spotted Dog, Bishops Green (Nr Dunmow)	Cars to Bishops Green
July 4	Leather Bottle, Pleshey	Cars to Pleshey
July 11	The Queens Head, Boreham – Paper Mill Lock	Cars to Boreham
July 18	Compasses, Little Green	Cars to Little Green
July 25	The Walnut Tree, Broads Green.	Cars to The Walnut Tree

Sunday afternoons meet at 2:15pm.

Aug 5	Ingatstone	Cars to Ingatstone Hall
Aug 19	Sweeps Walk – Croxtons – Little Waltham	Cars to Broomfield
Sept 2	Paper Mill Lock – Bumfords Lane (tea and cakes)	Cars to Bumfords Lane
Sept 16	Stacey's - Beaumont Otes – Bushy Wood	Cars to Broomfield
Sept 30	Galleywood – Great Baddow	Cars to Galleywood Common
Oct 14	Stacey's, Priors & Scravels	Cars to Broomfield

ALL ARE WELCOME

No walks longer than 5 miles

Contact Tel: 01245 698175 or 01245 441021

Follow us at www.facebook.com/broomfieldfootpathsociety or www.broomfieldessex.org

P SMITH

PLUMBING & HEATING

- BOILER SERVICES
- BOILER BREAKDOWNS
- FULL INSTALLATIONS
- SYSTEM UPGRADES
- PART L ENERGY EFFICIENT
- UNDER FLOOR HEATING
- LANDLORD REPORTS

9 Redmayne Drive
Chelmsford CM2 9XF
www.psmithplumbingandheating.co.uk

07801 817443

01245 763632

smith-paul104@sky.com

THE STABLES NURSERY

Full day care for children aged 0-5 years
Lovely country setting
Free pre-school places available
Holiday club also available
Forest Fun also available

01245 348159

www.thestablesnursery.co.uk

Susan Keeble Art Classes

Einstein doesn't actually attend the class, but this student made a very good portrait study of him in one of the projects this term!

The subject was 'Painting Portraits from Photographs', and the portraits chosen ranged from film stars to family members, with some very good likenesses being achieved.



This was just one of our three-week projects for the Spring term. The coming Summer term will cover: Line and Wash, Architecture, Landscape and Textural Watercolour Techniques, so once again the students will gain experience in a wide range of subjects and techniques.

Art Classes run on Thursday afternoons, from 1.30pm to 3.30pm, in the Small Hall. Art has proved very popular in Broomfield, and once again the classes are full for the next term. However, I do keep a waiting list, so that if anyone should drop out, the next name on the list can enrol. If you are interested in joining the class, or would like any more details, please do not hesitate to contact me on 01277 353973, or email: susankeeble2@gmail.com or have a look at my website: www.susanneeble.wixsite.com/artist. On the website you can also see some more of the work produced by the students.

Broomfield Carpet Bowls club

Broomfield Carpet Bowl Club has been running successfully at the village hall for some time. For those who do not know us, we get together on Mondays from 1.30-4.30pm and on Thursdays from 7.00-10.00pm (plenty of car parking is available). We regularly play other clubs from around the area in either home or away friendly

matches.

We offer a chance for people to learn new skills, have some exercise, make new friends and have fun. So if you are retired and at a loose end or if you just have some free time to learn a new skill in a relaxed and friendly environment, come along and try it.

If you are interested, the first two sessions are free. This is in order to give you an opportunity to try it out and get acquainted with the Club. Once you have joined the Club it costs £3 per session. We have three or four games with a refreshment break in the middle for free tea or coffee and biscuits and to give people a chance to socialise.

The club has invested in all new equipment over the last year – we have brand new mats to play on, new modern score boards and we play with a set of either blue or yellow bowls (which helps those whose eyesight isn't as good as it used to be).

If you have never played before, a club mentor will be on hand to help you with general guidance and practical advice on how to play. Never be disheartened. If it does not come in a flash, new skills and abilities are acquired over time, though often surprisingly quickly.

So if you want to come along and give it a try, you are very welcome. You can see what we are up to on facebook where we post photos from matches or the Christmas dinner.

Lullaby Baby Massage



Enjoy learning a new skill that can benefit both you and your baby. Baby Massage can help:

- Strengthen your relationship with your baby
- Help your baby to relax and encourage a deeper sleep
- Relieve wind, colic, and constipation
- Develop muscle tone and co-ordination
- Boost self-esteem and confidence in your

parenting

- Give you an opportunity to socialise with other parents in the local community

About the Course:

The course runs over 5 weeks and you will learn:

- Massage strokes for the legs, feet, stomach, chest, arms, hands, face and back
- A colic routine
- Gentle Movements
- Recommended massage oils

The classes will also include informal talks and discussions on relevant baby related topics including reading and understanding behaviour states, crying, and how to adapt the massage to suit your baby. Suitable for all babies from birth until crawling.

Baby massage group course dates in June/ July: Wednesday: 6th, 13th, 20th, 27th June and 4th July 2018. Friday: 8th, 15th, 22nd, 29th June and 6th July 2018.

For more information or to book your place on the next course please contact Keely on: 07875 627393 or via email: keely@lullabybm.com or visit www.lullabybm.com.

Support 4 Sight

Support 4 Sight assists visually impaired people in maintaining their independence and quality of life. Our aim is to support local people throughout Essex to cope positively with their sight loss.

Our team also works to prevent avoidable sight loss and to raise awareness of the reality of living with sight difficulties.

Support 4 Sight has a wide range of services to meet the needs of people with sight loss. Our services are there to improve the quality of life for children and adults of any age.

We support over 4,000 visually impaired people and their carers in Essex each year.

The Chelmsford Centre is open Mondays and Wednesdays 10 am – 2pm. Mondays are by appointment, and Wednesdays we offer drop in sessions. Please feel free to come along to see what the centre has to offer, we are located at 17 Cottage Place, Chelmsford, CM1 1NL.

We also run Coffee Mornings & Afternoons to

support service users & their carers throughout Essex. The Chelmsford Coffee Afternoons are held monthly on the last Wednesday of the month between 13.30 and 15.00 at Broomfield Village Hall, Main Street, Broomfield, Chelmsford CM1 7AH.

Our volunteers also offer support at our Broomfield Hospital Desk to those who have been recently diagnosed, are receiving treatment or attending for alternative reasons.

Volunteers at the hospital can signpost to relevant support, act as advocates for service users and offer advice on equipment that can make a difference to the lives of those affected.

"We are a small charity who help visually impaired people and their families in Essex. If we are lucky enough to win, we will be able to help many more people, particularly in the Chelmsford area to live a full and happy life with their sight loss. Our new resource centre in Chelmsford has a range of daily living aids, information and support. We also offer our service users good social interaction and trips."

Graham Hawkes,
Chelmsford Services Co Ordinator

Line Dancing

Beginners Line dance Classes Mon Evening 8.30pm - 9.30pm and Tuesday morning 11.00am - 12.00am. If you fancy some friendly company and exercise come along to our line dance class. It's just for fun. If you would like to see what we get up to, come along and watch or join in. All are welcome, no experience is necessary. Cost is £5 a class, tea, coffee and biscuits are provided.



BROOMFIELD & DISTRICT U3A REPORT

The inclement weather of the first quarter of the year did not diminish the wealth of activities undertaken by the various interest groups. Whether it was sitting around a warm fireside playing Bridge, Canasta or Scrabble or striding the Essex countryside.

We have enjoyed a variety of speakers enabling us to see the past 75 years through the eyes of Mildred (an Austin 7) or learnt the origins of English folksongs during a lively afternoon's singing. Who would have known Molly Malone was not necessarily that innocent or that the origins of 'Polly Perkins of Paddington Green' were a certain Cushy Butterfield from Northumberland who liked her beer? Future speakers will include looking at the origins of public transport maps and their design, talking newspapers and wetland restoration.

Time and tide wait for no man and in May we will have held our Annual general Meeting and elected a new committee and chairman for the next three years. It would be remiss not to thank David Marcus for his leadership over the past three years, which has seen us grow from strength to strength.

New interest groups are added as we go along; the Handbell Group was formed following our Christmas entertainment and in April the Bus Pass Group had their first outing. Their aim is to see how far they can travel and explore our wonderful county from a "bus-eye view".

So if you are active, enjoy life, are retired or semi-retired why not give us a go – details and further information can be found on our website or come and visit us at our monthly meeting on the second Wednesday of each month (excluding August) in Broomfield Village Hall, behind The Angel, at 1.30pm.

Website:
<https://u3asites.org.uk/broomfield>
Email:
 broomfieldanddistrictu3a@gmail.com
 Kim Taylor

LKG Daughters PLUMBING & HEATING LTD

From a tap to a full bathroom installation



01245 4781 11 Boiler Renewals & Repairs
01245 346895 Central Heating & Repairs
 Local family business established 1997 Bathroom Suite Installations
 City & Guilds Qualified
safe Pumps & Port Valves
 Taps, Ball Valves, etc
 All Work Guaranteed
 Female & Male Engineers

www.lkgdaughtersplumbing.co.uk

D.S. EAGLE
High-class family butcher

Prime quality beef, pork, lamb and poultry plus home-made sausages and burgers



ALL ENGLISH MEAT

We specialise in home-cured gammon hams and bacon, produced on the premises in the traditional way. Come and visit our shop and meet our qualified, experienced and friendly staff for helpful advice - you'll be very welcome.

01245 420516 07810 712765
 9 Wellfield, Writtle, Chelmsford, CM1 3LF

www.eaglebutchers.co.uk

Village Diary

Various activities including Karate, Bingo, Bridge Club, Aerobics, Women's Institute, Carpet Bowls, slimming clubs and children's activities take place in the Broomfield Village Hall on a weekly basis - please telephone the Village Hall 01245 443902, email hall@broomfieldessex.co.uk or have a look on the website <http://www.broomfieldessex.co.uk> for more information.

June

- 6 Coffee morning 10.00 - 12.00
 Broomfield Village Hall
 Orchard Springs W.I. 7.30 p.m.
 Broomfield Village Hall
 Susan Clare – Painting My Garden in Jamaica
 Property & Planning Committee 7.30 p.m.
 Broomfield Parish Office
- 13 U3A 1.30 p.m. Broomfield Village Hall
 Colchester Zoo – Rebecca Moore
 Village Amenities 7.30 p.m.
 Broomfield Parish Office
- 20 Finance Committee 7.30 p.m.
 Broomfield Parish Office
- 23 June – 1st July – Chelmsford Festival of Art and Culture
- 24 Songs of Praise 5.30 p.m.
 Church Green

July

- 4 Coffee morning with Mobile Information Service 10.00 - 12.00
 Broomfield Village Hall
 Orchard Springs W.I. 7.30 p.m.
 Broomfield Village Hall
 Margaret Rogers – Scilly Isles to Lindisfarne
 Property & Planning Committee 7.30 p.m.
 Broomfield Parish Office

- 8 Broomfield Village Fun & Games Day
 11.30 - 3.30 p.m. Broomfield Village Hall & David Smith Field
- 11 U3A 1.30 p.m. Broomfield Village Hall
 Talking Newspapers – Pat Wilson
 Village Amenities 7.30 p.m.
 Broomfield Parish Office
- 15 Broomfield Cottage Gardeners' Summer Flower and Produce Show 2-4 p.m.
 Broomfield Village Hall
- 18 Broomfield Parish Council 7.30 p.m.
 Broomfield Village Hall

August

- 1 Coffee morning 10.00 - 12.00
 Broomfield Village Hall
 Property & Planning Committee 7.30 p.m.
 Broomfield Parish Office
- 4 & 5 Chelmsford & District Fuchsia Society,
 St John Payne School
- 8 Village Amenities 7.30 p.m.
 Broomfield Parish Office
- 25 Finance Committee 7.30 p.m.
 Broomfield Parish Office



Broomfield Football Club

This winter was a frustrating one for the Club as storms and the Beast from the East and its siblings meant that our teams had many matches postponed from December through to March. The result is that some teams will be playing up until the end of May to ensure fulfilment of all fixtures. However, there is also much positive news to report. At the time of writing, U12 Dynamo's and U12 Thunder are both through to their respective league cup finals while the Dynamo's are also leading Division 1 and have made the Knockout Cup final. Sadly, the U14 squad lost their league cup final but U15 Blaze and U15 Flame Black both have league cup semi-finals to contest. On the senior side, the Sunday 1st team are through to the league cup final in the Pope & Smith league. The Over 45 Super Vets lost in their cup semi-final despite a very strong first season in Division 1 of the Greene King league.

The Easter break saw the 39th annual footballing exchange with our friends from SV Sparta Wertle in Germany. Around 80 boys, parents and other guests were hosted by members of the club with the lads visiting the Olympic Park, London Stadium and Duxford Air Museum. The club also hosted a race night and a hog roast as well as a "World Cup" football



tournament and several matches against our German opponents. Once again, the weather wasn't kind but this didn't stop a great time being had by all, helped a little by the odd beer and glass of schnapps! Sadly, this year's visit was without our great friend, Ralph Koldemeyer, the German coach driver, who passed away suddenly in December. Ralph will be sorely missed but it was an honour to host Ralph's wife Marion and his son Lars as well as Wilfred Luebs, the founder of the exchange. It was also a pleasure to see Walter Dietermann, the Chairman of Sparta Wertle, who was celebrating his 60th birthday while in Broomfield. Next year will be the 40th annual exchange in Wertle - a momentous landmark in the history of both clubs.

January saw the first anniversary of the opening of our new clubhouse and the new facility has received rave reviews from visiting teams of all ages. The clubhouse has also been used for several social events by our members and can be hired privately. We are still seeking non playing social members - an annual membership fee normally applies but we are happy to waive it for Broomfield residents mentioning this article!

Membership and hire details can be found on our website - www.broomfieldfc.com.

Broomfield Cricket Club

Club members have been hard at work in an effort to get the ground and pavilion at Brooklands ready for the new season which is now underway and features:-



Junior cricket coaching, which takes place on Friday evenings and this season we are running three teams for under 11's, under 13's and under 15's. All abilities welcome, come and give it a try!

Saturday Senior cricket, where we have two teams competing in the T Rippon Mid Essex Cricket League. Fancy a game? We're sociable yet competitive and always looking for new players to join us.

Social events, to include our President's Day on 10th June, BBQ's, Club evenings and presentation events to name but a few. Even our bar and club room has had a mini makeover through the winter! Want to get involved? Just let me know.

And finally breaking news - we are delighted to announce a new sponsor, Excel IT, who are specialists in building, supporting and optimising IT infrastructure, networks and connectivity. Their involvement is much appreciated.

To get involved, play, join or for any other information please get in touch.

Tony Cowell
Chairman
tony.cowell1@btinternet.com

Your one-stop shop for garden machinery

LEN'S LAWNMOWERS & GARDEN MACHINERY SERVICES

Over 100 machines on display Unit 16 Reeds Farm
Mower servicing & repair (off main Roxwell Road)
A1060, Roxwell, Writtle
Collection & delivery Chelmsford CM1 3ST
FREE with a service OPEN 6 DAYS A WEEK
(subject to seasonal change)

Main dealer & stockist for **HATZER** Main agents for **Motomil** **ALZCO** **AL-KO**
We also stock **QUALCAST** **BRONX**

www.lens-lawnmowers.co.uk 01245 422571

For all your engraving needs!

CLEARCUT
ENGRAVING LTD

Trophies · Hunt Buttons · Brass Plaques · & more

Personal & professional

Unit 2B Beehive Works, Beehive Lane, Chelmsford, Essex CM2 9JY

01245 352016 | clearcutuk@aol.com

Gary K. Steggall



- + Tree Surgery
- + Reductions
- + Felling
- + Hedge Trimming
- + Seasoned Logs
- + Site Clearance
- + Free Estimates
- + Fully Insured
- + £5m Public Liability

07971 696375
01245 496758

garysteggall499@btinternet.com

City & Guilds
NPTC

Environment
Agency
Business & Waste
Center & Hubs

SSS
SCOTTISH SKILLS
TESTING SERVICE

ITman in association with **Essex ageUK**

01245 806145
07940 138170
jeremy@itman.biz
www.itman.biz

PC, Laptop & Tablet Fix
Internet Problems
Home & Business Visits
Diagnosis Fee £20
No fix/No fee
Chelmsford Computer Club for
55+ with tuition and support

TRAINEE PROGRAMME APPROVED

01245 933199

SHOGUN
architecture & design
ARCHITECTURAL DESIGN & SURVEY CONSULTANTS
www.shogunarchitecture.com
hello@shogunarchitecture.com



Clinical Advice Line

08:00 – 20:00, 7 days per week

Call now for information about hospice care, advice on managing symptoms, and other needs relating to a life-limiting illness.

01245 455478

Farleigh Hospice,
North Court Road,
Chelmsford CM1 7FH
www.farleighhospice.org



Registered Charity No 284670



FROST WINDOWS

We offer residential & commercial repairs plus much more...

01245 259121

07850 315054

info@frostwindows.co.uk

Years of experience, a personal touch and quality customer support

- Window Locks
- Door Locks
- Hinges
- Handles
- Sealed Units
- Child Locks

www.frostwindows.co.uk

Heart and Sole

Heart & Sole is Chelmsford's healthy walking scheme, enabling you to join a programme of walks for enjoyment and health benefits. All walks are led by experienced leaders, often with a back marker enabling you to walk at your own pace without fear of being left behind.

Why not join the walk around Newlands Spring? We meet every Thursday at 10.00am in the car park, outside the entrance to Chelmsford Sport and Athletics Centre in Salerno Way, Chelmsford CM1 2EH.

Our buggy friendly walk heads through a pretty wooded area before meandering through the residential streets of Newlands Spring. This walk incorporates many green spaces and also some country views (summer walk only) before returning to the starting point through Melbourne Park.

The scheme is ideal for anyone wanting to:

- improve general fitness
- aid recovery from, or prevent illness or injury
- socialise and enjoy the beautiful views the local area has to offer

You are welcome to attend any of the Heart and Sole walks, more information can be found at www.chelmsford.gov.uk/heartandsole; all walks are graded and act as a guide for those who want to know what to expect from each walk. The Newland Spring walk is graded 2 –

Suitable for people who are looking to increase their activity levels. Lasting between 30 - 60 minutes and may include some moderate slopes, steps, or uneven surfaces.

Feel like a walk to celebrate Summer? Then why not join us for the SUMMER SOLSTICE STRIDE? A choice of short (5km) or long (10km) routes starting at Anglia Ruskin University at 7.00pm on Thursday 21st June 2018 led by our friendly walk leaders, along the rivers, through the parks into the sunset. Refreshments will greet you upon your return to the University. This year's proceeds will go to Macmillan Cancer Support.

Register online at www.chelmsford.gov.uk/summerstride or call 01245 606569. For more information on the Heart & Sole Scheme and the health benefits of walking go to www.chelmsford.gov.uk/heartandsole or call 01245 606569.

Malcolm Taylor

Broomfield Royal British Legion

This year has a great significance for many of us, and also for the Royal British Legion. The legion was founded almost one hundred years ago to support those who have served in Her Majesty's Armed Forces, or are serving, and their families all the year round. This can be hospital visiting, assisting with welfare problems or paperwork, bereavement or aiding the transition to civilian life outside of the services.

This year sees the 100th Anniversary of the foundation of the Royal Air Force (RAF) that so heroically protected our country in its hour of need during the Second World War and has continued at the forefront ever since. Since then the RAF have served in a combat role in conflicts around the world in addition to providing logistical, medical and humanitarian support in many disaster zones. A record echoed in their motto – “Per Ardua Ad Astra” – “Through difficulties to the stars”.

As important as that anniversary may be we also commemorate the ending of the First World War – the so-called ‘war to end all wars’. Regrettably that has not proved to be so and we are only too aware of the damage and loss that armed conflict continues to impose upon our world.

In 1918 after four years of horrendous war more than 1.1 million servicemen and women had lost their lives in the service of this country. They gave their lives that we and future generations could continue to live ours. In this centenary year it is important that we remember all who died in that conflict whether they are known or unknown to us; whether their final resting place is known or unknown. The Royal British Legion urges us all to say ‘Thank You’ to that generation and ensure that every one of them is remembered. For more information visit everyoneremembered.org

Apart from Remembrance events later this year the Legion is also repeating an event that occurred 90 years ago. In 1928 those who had lost a loved one in the First World War, and many of

their surviving comrades, joined what was then a young organisation less than six years old (The British Legion) on a pilgrimage to the battlefields of that conflict.

This year, ninety years on, thousands of representatives from branches of the Royal British Legion nationwide will emulate that event with the Great Pilgrimage 90 (GP90). This is a programme of visits to battlefield memorial sites culminating in a parade at Ypres’ Menin Gate where wreaths will be laid to remember the Fallen.

Each branch will be sending two representatives. Broomfield Branch will be represented by our Standard Bearer Paul Hayward (who has seen service in many recent conflicts) and Michael Priest (who saw service with the Australian Forces in Vietnam). They will be carrying our wreath with a message of hope and remembrance compiled by the children of Broomfield Primary School.

These events commemorate those past but also emphasise the continuing network of local Royal British Legion Branches that provide support to the service and ex-service community. This work is undertaken by volunteers who are able to access grants and funds from the national Annual Poppy Appeal to support those that need assistance. In order to continue this work, last year Broomfield Branch raised in excess of £17,000 for the Poppy Appeal. We now need a coordinator for our Poppy Appeal so if you are able to assist in anyway please contact the Essex County Fundraiser – Angela Tillet at atillet@britishlegion.org or Broomfield Branch Chairman, Malcolm Taylor on broomfield.chairman@rbl.community.

Membership of the Royal British Legion is open to all, whether you have served in our nation's forces or not. If you believe in helping those who served why not join your local Branch and Club at Saxon Way, Broomfield CM1 7YA or msoessex@britishlegion.org.uk.

Malcolm Taylor

BAR MANAGER The Royal British Legion Broomfield Branch Social Club has a vacancy for a Bar Manager at the Branch Social Club in Saxon Way, Broomfield. For details of the position please contact the RBL Social Club Secretary or Treasurer at the RBL Broomfield Branch, Saxon Way, Broomfield CM1 7YA.

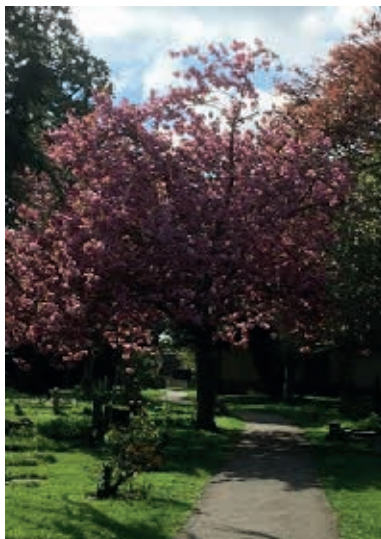
News from St. Mary w. St. Leonard's Church, Broomfield

Continuing on from my letter in the Spring edition you will see that there has been some progress made in the meadow to the left hand side of the footpath as one walks north from the Churchyard.

We will be erecting wooden fencing in keeping with the Church Car Park boundary and a hedgerow will be planted inside. At present we are working with Essex County Council on a change of use of this land but have been given the green light to begin the works now. It was a relief to find out earlier this month that the plans for the Cycle Path have meant that the scissor footpaths, part of which crosses this churchyard land, are to be closed. They were never used anyway, and this means that the church no longer needs to provide a gate in the far north west corner of this land, which had been a concern for us.

Work on the right hand side of the footpath as you walk north from the churchyard has yet to begin in earnest as we are waiting for the nesting season to be over and will only begin work when Natural England has given us permission to do so. In time this whole area will be Consecrated as Churchyard and we are working with Chelmsford Diocese to ensure that all the necessary plans and faculties are complete to ensure that the churchyard continues to provide a final resting place of peace and repose for all Broomfield residents in the future.

As for the rest of the churchyard, our Tuesday morning working party have had to step up a gear in the last few weeks as the grass has begun to grow rapidly and they work hard to keep the churchyard looking neat and tidy. The group are a friendly bunch and we are always looking for new people to join us. The Churchyard is a facility for the whole community of Broomfield. There is much history here and people find it a



pleasant and interesting place to walk, to sit and ponder awhile, to chat to passers by and neighbours. At the beginning and end of the school day many children and young people walk to and from the schools in the parish through the churchyard. I also speak to many people who are making their way to the hospital or are out walking their dogs. If you fancy making some new friends and would like to help keep the churchyard nice for everyone, do consider joining the Churchyard Working Party. Come along

any Tuesday morning around 9.30am, good sturdy shoes and gardening clothes are the only requirements and probably a pair of gardening gloves. We have lots of lawn mowers and you will be directed to the work which needs to be undertaken that day.

At 11am the Working Party take a break for a chat, coffee, sausage rolls, cake and biscuits and to sort out what works need doing next. After a second session in the churchyard most people go home around 1pm. Please do consider coming to help, together we can ensure that the Churchyard in Broomfield remains a beautiful, well kept and memorable place to walk, talk and remember the rich history of the past, both recent and distant.

I look forward to seeing you at our events over these coming months. There are lots of things going on and you are always welcome to join us at regular worship times and at any of our social groups. All details can be found on our website at www.stmarybroomfield.org

Just for your enjoyment I am including this picture of our beautiful pink blossom tree, on a spring morning, in full bloom!

With every blessing
Rev'd. Carolyn Tibbott, Vicar of Broomfield

Songs of Praise on Church Green Sunday 24th June 2018



Starts at 5:30pm

Please bring a garden chair or picnic blanket with you

www.stmarybroomfield.org or 01245 443565



Andy's Aerials

Essex CM1 **Your local aerial installer**

- » New aerial & satellite installations
- » Aerial & satellite repairs
- » Extra TV points
- » TV wall mounting
- » System design & install
- » Freesat & YouView installations

Family-run business with
over 20 years of experience

Trading Standards
Approved Aerial Installer

Quality workmanship
at sensible prices



digital
Approved Member

Freephone **0800 77 97 047**

Mobile **07916 305 977**

Mobile Local Rate **0333 900 333 2**

Email andy@andysaerials.com

www.andysaerials.com



OKELEY CARE HOME

Specialist baths · Library · Quiet rooms · Ample parking · Hairdressing
Fully accessible secure Sensory Gardens · Library services · GP services from local practices

Okeley is a modern, purpose-built 84-bed Care Home with first class facilities that specialises in dementia and care of the elderly.

With spacious bedrooms and luxury en-suite wet rooms, Okeley Care Home provides accommodation and care to meet the needs of those living in the home.

Okeley Care Centre has been specially designed to provide maximum comfort, convenience

and stimulation for the people who live there. We have a games room, a library, a variety of attractive lounges and dining rooms, and some lovely outdoor spaces for sitting and enjoying time with friends and family.

Our spacious bedrooms are all en-suite have been beautifully decorated ready for the residents personal touches.



Okeley has a superb location within an easy ten minute walk of Chelmsford City centre and main line station
Okeley Care Home, Corporation Road, Chelmsford CMI 2AR
Tel: 01245 287500 · Fax: 01245 287522 · Email: okeley@excelcareholdings.com
If you are looking for a career in care then please call or visit our website for more information



SIMON HOULDING
EST. 1997

CURTAINS & UPHOLSTERY

TRADITIONAL & MODERN UPHOLSTERY
CURTAINS, BLINDS & SHUTTERS
DESIGN & INTERIORS ADVICE
VOYAGE MAISON RETAILER
BESPOKE FURNITURE
CONSERVATORY BLINDS
BESPOKE LEATHER
FRENCH CLUB CHAIRS
FABRICS

**Unit F, Stock Chase
Heybridge, Maldon
Essex CM9 4AA**



CELEBRATING
20
YEARS IN BUSINESS

www.simonholding.co.uk
01621 859 484
07990 972 676

Twilight Bat Walks

In the United Kingdom we have 18 species of bat, all are insectivorous and a great biodiversity indicator. A single bat can eat up to 3000 midges in one night making them an excellent natural insect controller, but unfortunately over recent years their populations have declined, making each roost important for future survival. Due to their decline, bats and their roosts are protected under UK and European law with a roost defined as any place that a wild bat uses and is protected whether bats are present or not.

At Mid-Essex Hospital Services NHS Trust, we are proud to have high bat activity around our Broomfield Hospital site, with a bat roost of Soprano Pipistrelles known and monitored for several years. Both Soprano & Common Pipistrelles have been found foraging within our natural areas, feeding on insects during their summer months and highlighting our effective natural management on site.

Bat walks offer a unique educational opportunity to experience these intriguing creatures, and in 2016 we launched an inaugural Twilight Bat Walk Programme, led by a local bat enthusiast. The walks proved to be a huge success, providing education in an endangered species whilst promoting healthy walking alternatives within Broomfield Hospital and community. Following on from these walks, a larger Twilight Programme was produced for the summer of 2017.

A stunning 400% increase in participation occurred, with over 100 individuals expressing interest, comprising of staff, patients and members of our local community. David Jackson, the bat enthusiast, and now the Trust's Sustainability Project Coordinator said 'It's been great to see the walk participation increase so quickly...educating those in our community about endangered species is hugely valuable to their future conservation, whilst achieving it

through the promotions of an active lifestyle.'

Supported by the Essex Bat Group and Heart & Sole Walking Scheme the 2018 Twilight Programme is now available. Join us with friends and family to experience the hospital site bat activity and roost. What will you find?

The Bat Walk Dates

- 25th May, starts 8:30pm
- 13th July, starts 8:45pm
- 27th July, starts 8:25pm
- 17th August, starts 7:45pm
- 7th September, starts 7:00pm

Spaces are limited, on a first come first serve basis. If you'd like to express an interest please contact David Jackson on **sustainable.development@meht.nhs.uk** or **01245 514558**.



Fuchsia Society

Chelmsford & District Fuchsia Society will be holding their annual display at the St John Payne School, Patching Hall Lane, Chelmsford on Saturday August 4th 10.00- 5.00 and Sunday 5th 10.00 – 4.00 with the Auction at 3pm. Entrance is £1.50 under 16 years are free.

This will be the 33rd Display for the society and over the years we have raised £91,500 for special needs children. When we started it was for the Woodlands School respite holiday which was held at St John Payne School for one week during the summer holiday. The classrooms were turned into dormitories and the 6th formers became a Buddy for the children of Woodlands. The money we raised was spent on taking the children out on coaches for the day.

Woodlands School became Columbus School and College and still have the Buddy Scheme with the 6th formers from St John Payne. The money is now used for extracurricular school events such as the Christmas Party and The Proms at the end of the summer term.

The Fuchsias on display are grown by the members -we have lots of different varieties making a wonderful sight. We also have Fuchsia plants for sale as well as local craft stands, tombola, raffle and second hand books. Food and

CHELMSFORD & DISTRICT FUCHSIA SOCIETY

ANNUAL FUCHSIA DISPLAY CRAFT & GIFT SHOW

SATURDAY & SUNDAY
4TH & 5TH AUGUST 2018

10AM – 5PM SATURDAY
10AM – 4PM SUNDAY

ST JOHN PAYNE SCHOOL
PATCHING HALL LANE
CHELMSFORD CM1 4BS



Entry fee:
£1.50 for adults
free for under 16



- ✦ All day refreshments
- ✦ Plant auction 3pm on Sunday
- ✦ Plant sales and growing advice
- ✦ Book stall
- ✦ Tombola and raffle
- ✦ Ample free car parking

Proceeds to Columbus School & College
for special needs students

drinks will be served all day

Come and see this wonderful sight and help us raise money for the special needs children.

Janet Wall

Chelmsford Festival of Art and Culture

Saturday, June 23 to Sunday, July 1

Chelmsford Festival of Art and Culture is a new family festival full of music, art and dance. The festival will launch in the town centre on Saturday, June 23 with a host of entertaining activities, and will include after that, a week long city-wide programme of art and cultural events.

The fun will consist of art exhibitions, music performances, a carnival parade, storytelling, circus performers, ghost walks, science, dance and art workshops, and much more. Other highlights include the Sound of Essex Festival (a youth music festival to celebrate music from



schools across Essex) and the Chelmsford River Festival, including the dragon boat race.

Chelmsford Festival is a community-led, charitable initiative run by local volunteers working collectively to bring the community of Chelmsford together.

For more information, find us on Facebook or visit our website at chelmsfordfestival.org

**BROOMFIELD
VILLAGE FUN
AND GAMES DAY**
SUNDAY 8TH JULY 2018
11:30 - 3:30
Broomfield Village Hall and David Smith Field.

**FAIRGROUND
RIDES**

DONKEY RIDES

CRAFT TABLES

REFRESHMENTS

BOUNCY CASTLE

**MEET THE
MEERKATS**

**AND MANY MORE
STALLS**

Broomfield Hospital in Chelmsford needs Garden Volunteers!

Can you help?

Join our 2018 Gardening Volunteer Programme. It's going to be an exciting year!

Join us to improve the grounds and gardens of Broomfield Hospital. We are looking for individuals or groups who can spare a few hours to get involved in some of the projects we have planned. All activities suit your schedule—you attend when you can.

Most of the projects we will be doing this year focus on light gardening activities (planting, digging, seat varnishing etc.), so people of all ages and abilities will be able to get involved. Our volunteer sessions are led by a professional horticultural expert and you will receive all the training and equipment required for tasks. Learn new skills, meet new people, experience our wildlife and have some fun whilst helping us to improve the hospital to benefit our patients, visitors and staff.

You could be helping with;

Revitalising hospital entrances with a splash of planting colour

Rejuvenating our historic Sunken Garden, built in the 1960's and now redesigned to provide a therapeutic environment for patients receiving cancer treatment

Re-varnishing the popular seating areas on the Wellbeing Terrace, the peaceful relaxation spot to enjoy moments outside

Clearance and habitat enhancement of our two natural woodlands on site.

If you want to sign up, or know someone who would like to get in involved, send us an email sustainable.development@meht.nhs.uk or call **01245 514 558**. We'll provide you with more details about the project dates and times; it'll be great to you on board!

<p>Help to rejuvenate our historic Sunken Garden</p> 	<p>Plant some colour near hospital entrances</p> 	<p>Maintain the natural beauty of our site</p> 
<p>Get stuck in with conserving our woodland habitats</p> 	<p>And experience our native wildlife</p> 	

1st Chelmsford Guides Summer 2018

1st Chelmsford Guides had a very constructive spring term, completing many different challenges and activities, earning their construction badges. The girl challenges included designing a new Girl Guide World Centre for Chelmsford, including learning about foundations by creating an example out of baking materials. As always the girls favourite challenges are the one that include chocolate. In teams, the girls had to construct a tower and balance an egg on top. Usually, we use hard boiled eggs but as it was Easter we used Cadbury Crème Eggs. I am pleased to say that all the girls received their construction badges at the end of the spring term.

This summer term has brought many highs and a few lows. The girls have been enjoying this terms fun activities, both indoors and outdoors with the better weather and lighter evenings.

Sadly, this summer two of our unit leaders are leaving 1st Chelmsford Guides and moving away from the County to pastures new. Paula and Pat have been with the unit for a total of sixteen years between them. We wish them all the best for their new adventures.

Over the years, Paula and Pat have been an essential part of our unit, giving up their time and going the extra mile for the unit. They will both be truly missed by everyone in the unit, guides and the wider guiding community. During Paula's



time at 1st Chelmsford she has also been District Commissioner and run several camps with other units, giving the girls a chance to try many new activities. Pat joined our unit after running the 11th Chelmsford Guides, which she did for 20 happy years. Even though Pat is a Unit Helper within 1st Chelmsford Guides she still does as much as a unit leader, if not more. Over her time within the unit she has taught the girls

many skills, such as quilling, knot skills and many more which they may not have otherwise had the opportunity to do. I would like to take this opportunity to wish them both all the best for the future and hope they can continue Guiding once settled in in their new home.

Now with only myself and Jess running the unit we are calling out for new leaders or helpers. This year 1st Chelmsford Guides will celebrate its 100th Birthday on the 1st September and will require the extra help to ensure the unit stays running and get to celebrate this auspicious day. If you have ever wanted to try something new and give something back to your local community, join Girl Guiding UK and Volunteer as a Girl Guide Leader or Girl Guide Helper. To volunteer for First Chelmsford Guides in Broomfield please contact Leah Powell via email: leah_powell@live.com or call/text **07941 894415**.

ALL ROOFING WORK UNDERTAKEN
07866 466148 • 01277 821 683

New roofs
 Renewals
 Leadwork
 Feltwork
 Fascias & Soffits
 Guttering

TOM & LEADWORKS ROOFING
ROBERTSON

www.tomrobertsonroofingltd.co.uk

DANBURY
 Fencing Ltd

THE FENCING SPECIALISTS

Witham
www.danburyfencing.com **01376 502020**

ESSEX OPEN GARDENS

Date	Name of House	Address
Sunday 3 rd June	Mill End	Southminster, CM0 7HL
Sunday 10 th June	Pebmarsh Trail	Halstead, CO9 2HN
Sunday 17 th June	Gaston House	Little Hallingbury, CM22 7QS
Sunday 17 th June	8 Dene Court	Chignall Road, Chelmsford, CM12 2JQ
Sunday 1 st July	Deers	Clavering, Saffron Walden, CB11 4PX
Sunday 12 th August	Ingatstone Hall	Ingatstone, Brentwood, CM4 9NR
Sunday 19 th August	Mapledean Farm	Latchingdon, CM3 6LG

Email redcrossessex@redcross.org.uk
 Facebook [@redcrossessex](https://www.facebook.com/redcrossessex)

The British Red Cross Society, incorporated by Royal Charter 1908, is a charity registered in England and Wales (220949), Scotland (SC037738) and Isle of Man (0752).



Then and Now



Essex Blinds Direct
 only use the best
 materials available
 on the market!

Save
 up to 30% on
 Hillarys Blinds
 prices!

Premier source of quality blinds



Essex Blinds Direct has extensive experience in manufacturing and installing a wide range of blinds: Roman, Venetian, Velux, Conservatory / Vertical & Wooden Blinds.

Whether you want to have new blinds installed, your broken ones repaired or just cleaned by a profession then ask us first.



☎ 01245 604 806 @ sales@essexblinds-direct.com 🌐 www.essexblinds-direct.com

Hours of Operation: Mon-Fri: 8-10pm; Sat: 8-10pm; Sun: Open by appointment



01245 422712 | 07711 606561
www.highwoodlandscapes.co.uk

- Trees • Pruning • Hedge Trimming • Roots Removed •
- Topping & Rotovating • Turfing • Fencing • Garden Design •
- Decking • Patios • Block Paving • Drives • Tar & Shingle •

PROPERTY MAINTENANCE

- Roofing • Chimney Repairs • Building Work •
- Flat Roofs • Guttering • Fascias & Soffits •

20% discount when you mention Broomfield Parish Council Magazine

Free written quotes & advice | 10 year guarantee on all work | 25 years of experience

Unit 1, The Paddocks, Highwood, Chelmsford, CM1 3PU • email info@highwoodlandscapes.co.uk

Open Gardens 2018

Enjoy an unforgettable day of colour and fragrance in beautiful Essex gardens, opening to the public through the summer in support of Farleigh Hospice. For more information or to book your ticket, please call 01245 457411 or visit www.farleighhospice.org/gardens



It is because you care that we can
www.farleighhospice.org
Registered charity no 284670



Old Moulsham	Sunday 3rd June
Danbury	Sunday 10th June
Great Notley	Sunday 17th June
Little Waltham	Sunday 24th June
Mill End, Bradwell-on-Sea	Sunday 1st July
Galleywood	Sunday 8th July
Witham	Sunday 8th July

ACADEMY ARTS THEATRE SCHOOL PRESENT:

The **GOLDEN TICKET** *to* **WONDERLAND**

14th-15th July, 2018
Chelmsford County High School
Broomfield Rd, CM1 1RW
Adults: £15.00 Kids: £10.50
Saturday at 7pm & Sunday at 1pm & 5pm
To book tickets on-line go to:
www.academyarts.co.uk
WWW.ACADEMYARTS.CO.UK

Trolls FOR AGES 4-7YRS

01245 422595

SUMMER SCHOOL
30th July-3rd Aug
Broomfield Methodist Church,
124 Main Rd, Broomfield, Chelmsford, CM1 7AG

★ TROLLS ★ AGE 4-7rs
9.00am-11.00am - £65 per week or £15 per day

★ GREATEST SHOWMAN ★ Age 8-18yrs
11.30am-3.30pm - £120 per week or £27.50 per day
(Students paying for the Full week receive a free Summer School T-shirt)

THE GREATEST SHOWMAN
For Ages 8-18yrs

WWW.ACADEMYARTS.CO.UK

Bus caution

Butlers Farm bus stop is one of many situated immediately after a junction, namely the T junction just past Court Road. Last month, a small car incredibly managed to take off the bumper of a bus.

The car driver was pulling out from Court Road. Having checked there were no vehicles following behind the bus, they enthusiastically accelerated out without realising that the bus was actually braking as it intended to use the bus stop!

It's a reminder that bus drivers are instructed to pass the junction before they indicate that they intend to pull into the bus stop. Stay safe.

Wendy Daden



Recording a tiny slice of Broomfield's history

Brumfeldans continue to record and sort Roman brick and tile from Dragonsfoot. Whilst 'special finds' will be going to Chelmsford Museum, it is hoped the remains will be entrusted into the known creative hands of a Brumfeldan and find a spot, near our Parish Hall, to commemorate an important aspect of our village's history.

Robin Marchal

find us on Facebook

Stick and flick dog poop

Dog poop is always a 'hot and sticky' subject in the village. With the recent attack on plastic the Forestry Commission is encouraging the old country code, to use a stick and flick the dog poop into the undergrowth or away from public footpaths. Obviously not advised if you are in an urban area!

The aim is to reduce the number of plastic bags that are not biodegradable.

Wendy Daden



Andy's Computer Solutions

PC & Laptop Repair Specialist

Tel: 07762 476648
Email: andyscomputersolutions@hotmail.co.uk



Chelmsford Funeral Directors

Independent & Local Co-operative
Award Winning Customer Service
FREE Aftercare & Support Groups
FREE Bereavement Counselling
Inflation Proof Funeral Plans
FREE Online Memorials & Tributes

24 hr assistance: 01245 353978

Contact us: 78 Broomfield Road, Chelmsford, Essex CM1 1SS
Opening hours: Monday - Friday 9am - 5pm



funerals.chelmsfordstar.coop

Part of the Chelmsford Star Co-operative Society Limited