

# *Broomfield* **TIMES**

Issue 58 | Summer 2019

*News & events from your Parish Council*





# NORDIC TIMBER LTD

## TIMBER & FENCING SUPPLIER

### Decking

32mm x 140mm x 4.8m £10.00 per length  
32mm x 140mm x 3.6m £8.00 per length

### Treated Essex Board

Black 175mm x 4.8m £9.00 per length  
Brown 175mm x 4.8m £6.00 per length

### Green Treated Timber C24

100mm x 50mm x 4.8m £8.98 per length  
150mm x 50mm x 4.8m £14.02 per length

### New Sleepers — Brown / Green

240mm x 120mm x 2.4m £23.00  
200mm x 100mm x 2.4m £20.00

### Picket Fence Panels

6 x 3 £18.00

### Decorative Pickets

6 x 3 £15.00

### Bow Top Fence Panels

From £19.00

### Close Board Fence Panels

6 x 6 £21.00  
6 x 5 £20.00  
6 x 4 £19.00  
6 x 3 £18.00

### Feather Edge Gates

6 x 3 £35.00

### Fencing Ironmongery from Stock

Nails and Screws  
Joist and Jiffy Hangers

**SPECIALISTS IN FENCING, TRELIS, POSTS AND DECKING, GRADED TIMBER AND PLYWOOD**

**• CHEAPEST AROUND • PLEASE PHONE FOR A QUOTE •**

**Unit 1 Bulldog Works, Boars Tye Road, Silver End, Witham CM8 3QE**

**T: 01376 584902**

**Open: Monday to Friday 7:30am to 4:30pm & Saturday 8:00am to 12:30pm**

All Prices Subject to VAT

# Broomfield **TIMES**

Welcome to this Summer edition of the Broomfield Times. The Parish Council annual reports can be found on pages 14-18. Unfortunately the financial report has been delayed so it will be published in the Autumn issue.

Congratulations to Malcolm Taylor who completed his 120km walk to Santiago de Compostela. You can read more about his experience on page 40. Elsewhere we have regular reports and news from many of the groups who are active in our community.

**Selina Matthews**

Cover photo taken by Steve Barrett



## **JP** Carpenter & Joiner

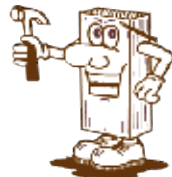
I am a qualified Carpenter and Joiner with 35+ years' experience.

I am a member of the Guild of Master Craftsmen and am competent in every aspect of carpentry and joinery, from structural work such as hand cut roofs, building extensions and loft conversions to making bespoke pieces of furniture.

J.P. Egleton

T: 01245 442739

M: 07788 784211



Bounderby Grove, Chelmsford, CM1 4XN

## **JIM'S DÉCOR & MAINTENANCE**

- Traditional & Modern Décor Renovation
- Wall Lining & Paper Hanging
- Appliance Installation & Repair



Liability insurance backed • Over 30 years' experience

✉ [jimsdecor@hotmail.com](mailto:jimsdecor@hotmail.com) 07802 245129  
🌐 [www.jimsdecor.co.uk](http://www.jimsdecor.co.uk)

**TO ADVERTISE PLEASE CALL 01843 269513**

Published by **Community Ad Web Ltd**

**01843 834160**

email [info@communityad.co.uk](mailto:info@communityad.co.uk) web [www.communityad.co.uk](http://www.communityad.co.uk)



Supporting the  
**REBUILD OF BRITAIN**



The views expressed in any published content are solely those of the contributors. The Publishers accept no responsibility for the accuracy of any information contained in the publication. The contents of this magazine including images may not be copied, reproduced, distributed, downloaded or displayed in any form or by any means without the prior written permission of Community Ad Web Ltd. Unless otherwise specified, the authors of the literary and artistic works in the pages in this magazine have asserted their moral right pursuant to Section 77 of the Copyright Designs and Patents Act 1988 to be identified as the author of those works. The Publishers reserve the right not to publish a submission or part of a submission that they consider defamatory or otherwise inappropriate for publication. CommunityAd wishes to advise all readers that it does not endorse or recommend any products or services contained herein. CommunityAd does not, therefore, take any legal responsibility for the advice given by any of the advertisers.

## Broomfield Contacts

### Parish Councillors

**John Barnes** *Chairman*

**Ros Mercer** *Vice Chairman*

*& Village Hall Charity*

**John Blake** *Planning Committee*

**John Barnes** *Finance & General Purposes,*

**David Howell | Angela Thomson | Sue Hubble**

**Wendy Daden | Les Steed | Angela Faulds**

**Mike Letch** *Clerk*

**Karen Hurrell** *Assistant Cleck (Planning)*

**Wendy Martin** *Assistant Clerk (Village*

*Amenities)*

Parish Office, 158 Main Road, Broomfield, CM1 7AH

☎ 01245 441660

✉ [clerk@broomfieldessex.co.uk](mailto:clerk@broomfieldessex.co.uk)

*Parish Councillors can be contacted through the Parish Office Mon, Weds & Fri 10.30am - 12.30pm (answer machine available out of office hours)*

### City Councillors

**Barry Knight** ☎ 01245 420045

✉ [gbr.knight@chelmsford.gov.uk](mailto:gbr.knight@chelmsford.gov.uk)

**Wendy Daden**

✉ [wendy.daden@chelmsford.gov.uk](mailto:wendy.daden@chelmsford.gov.uk)

**Mike Steel**

✉ [mike.steel@chelmsford.gov.uk](mailto:mike.steel@chelmsford.gov.uk)

### County Councillors

**John Aldridge** 33 East View, Writtle, CM1 3NN

☎ 01245 421524

✉ [cll.john.aldridge@essex.gov.uk](mailto:cll.john.aldridge@essex.gov.uk)

### MP

**Kemi Badenoch, Conservative**

[www.kemibadenoch.org.uk](http://www.kemibadenoch.org.uk)

Many problems can be dealt with over the phone or by email. Due to the size of the constituency, the next surgery appointment may not be at a convenient location. If you have an urgent issue, or do not need a face-to-face appointment please contact my office immediately so we can start working on your case as soon as possible.

To book a private surgery appointment, please

ring my office on **020 7219 1943** or visit my website where you can request one electronically.

### Police

Contact for PCSOs:

Non-emergency number 101

Or via website [www.essex.police.uk](http://www.essex.police.uk)

### Editorial Committee

**Editor. Selina Matthews**

**Cllr. John Barnes**

**Cllr. Daden**

**Cllr. Mercer**

Whilst Broomfield Times is supported by the Broomfield Parish Council, the views expressed within it are not necessarily those of the council. Please note that the Parish Council do not recommend or vet advertisers.

### Contributions

Contributions to future editions are welcome, please email:

[selina.matthews@tiscali.co.uk](mailto:selina.matthews@tiscali.co.uk)

or send a hard copy to:

The Editor c/o

The Parish Office

158 Main Road

Broomfield, CM1 7AH

☎ 01245 441660

Articles accompanied by photographs are particularly welcome. Please send either professional prints or email full-size JPG files.

### Copy Dates

- Copy for the Autumn issue to be sent by 19th July.

### General Notes

- Free dog waste bags, graffiti removal kits plus further supplies of plastic bottle bags and cardboard and paper sacks are available from the Parish Office.
- Please refer any play area problems or incidents to the Parish Office.

# Need a gardener?

**Honest • Reliable • Affordable  
Qualified • Insured**

Please do not hesitate to get in touch for a no obligation, free quotation or to learn more about our business and the array of services we provide.



8 years' experience in gardens big & small

University-level education

General tidy-ups and gardening tasks

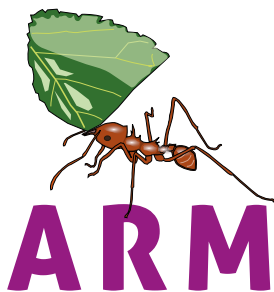
Specialist lawn care/treatment

Hedge cutting and fruit tree pruning

Clearance & plant bed renovation/improvements

Planting plans and trade-price purchasing

All seasons management plans



**Anthony Martin**

07821 133 413

07540 650247

[anthony.r.martin@hotmail.com](mailto:anthony.r.martin@hotmail.com)

**GARDENINGSERVICES**



## Broomfield's Senior Lunch Wednesday 20th February 2019

**Almost 100 parishioners attended the Senior Lunch this year which was hosted by the Parish Council.**

They were welcomed with a glass of sherry followed by a full Christmas lunch of turkey and all the trimmings. Delicious Christmas Puddings were again generously donated by local company Lillypuds (<https://www.lillypuds.co.uk/>) and everything was cooked to perfection by Chicks Catering. Fantastic entertainment was provided free of charge by Fleeting Shadows – many parishioners feeling the need to dance off their dinner!

**Thank you very much to:**

- Broomfield Parish Council
- Woollards Trust (donation)
- Parish Councillors & Staff (raffle prizes)
- Chicks Catering
- Lillypuds
- Fleeting Shadows

**Provisional date for next year's event:  
Weds 20th February 2020**



## COMPUTER PROBLEMS?



**IS YOUR COMPUTER  
RUNNING SLOW,  
CRASHING OR JUST  
GIVING YOU  
PROBLEMS?**

**Microsoft  
CERTIFIED  
IT Professional**

**Then give Micromend  
a call for free advice  
No call-out fee • No fix, no fee**

### YOUR LOCAL FRIENDLY SPECIALIST FOR

- All PCs and laptops
- Apple Macintosh
- Configuring iPads, iPhones and Android mobiles,
- Internet problems
- Virus removal
- Upgrades and replacement of your old machine
- Install custom-built Windows 7, 8 and 10 PCs
- We can advise on child safety
- We are CRB Registered

For more information on our services visit  
[www.micro-mend.co.uk](http://www.micro-mend.co.uk) | [emailglen@micro-mend.co.uk](mailto:emailglen@micro-mend.co.uk)  
mobile 07788 925085 | office 01245 463330



Is your  body perfect?

**DENT REPAIR FROM ONLY £55!**

For a quote or further information  
call Paul on **07779 090572**  
or email [info@diamonddents.co.uk](mailto:info@diamonddents.co.uk)



[www.diamonddents.co.uk](http://www.diamonddents.co.uk)



**Your one-stop shop for garden machinery**

**Over 100 machines on display**

**Mower servicing & repair**

**Collection & delivery  
FREE with a service**

**[www.lens-lawnmowers.co.uk](http://www.lens-lawnmowers.co.uk) 01245 422571**

Main dealer & stockist for **HAYTER**

Main agents for **WORWORTH** **AMT2** **ALDO**  
We also stock **MANCAST** **ALDO** **ALDO**




**THE CASTLE** at Great Leighs  
Main Road, Great Leighs  
Chelmsford CM3 1NE  
01245 362630

**THE HARE**  
Bishops Stortford Road  
Roxwell CM14 4LU  
01245 248788

**THE CHERRY TREE**  
Stambridge Road  
Rochford SS42AF  
01702 545960



The Real Food Pub Company  
[www.pieandpintinns.co.uk](http://www.pieandpintinns.co.uk)



**Balloons & Party**  
@ Broomfield

Balloons & Party stock thousands of lines across our departments. A wider range of party ware including banners, decorations, tableware, invitations, table centrepieces, badges, and much more.

**Balloon Deliveries**  
Weddings  
Corporate  
Handmade Cakes  
Cards  
Gifts

10% OFF WHEN YOU MENTION THIS ADVERT (valid until the end of July)

01245 350600

 Balloons & Party at Broomfield

**Barnard & Hoad**  
GLAZING

Established for over 20 years, we have built a reputation for quality workmanship at very competitive prices.

- Replace misted or broken sealed units
- uPVC double glazing repair
- Repair or replace window locks, hinges and broken handles

Free Quotes

**07802 265 837**  
[barnardandhoad@gmail.com](mailto:barnardandhoad@gmail.com)



essexdomesticspares

Repairs & Spares • New Appliances  
Refurbished Goods

Same Day Repairs Available

**01245 258837**  
[essexdomestic@gmail.com](mailto:essexdomestic@gmail.com)

DOWNLOAD OUR NEW APP FROM THE APP STORE TODAY!

CHELMSFORD'S PREMIER TAXI COMPANY

**FAREWAY** | **355 555**



## Future of library services in Essex

**Now that the “Future Library Services Strategy Consultation”** has concluded you may wish to know where things go from here in respect of the Tier 4 Libraries located in Broomfield and Writtle.

The County Council has invited parish councils and other organisations and groups, who are considering establishing a community managed library or alternative library provision in Tier 4 areas, to submit to the Council an “expression of interest”. This offer remains open whilst the responses to the Consultation are evaluated.

Further information on the strategy and other key associated issues are available at the [Libraries Consultation homepage](#) This site will be updated as new information becomes available. To learn more about Community Library Services (CLS) including the tiers and proposals, please visit our dedicated web page at [libraries.essex.gov.uk/libraries-consultation/community-library-services](http://libraries.essex.gov.uk/libraries-consultation/community-library-services)

The draft final strategy is expected to be presented to the Council's Cabinet in the summer of this year when it will assess all the consultation information and the proposed final strategy before making a decision on

whether to approve this approach. Once a final strategy has been approved the plan is to work with interested parties in developing CLS in Tier 4 locations. Proposals for Tier 4 CLS do not have a specified window for development, but it is intended to work with community groups to ensure a smooth transition wherever possible. However, any Tier 4 library service closure approved as part of a final agreed strategy will start from the Autumn 2019.

## Help our area on “Green Claims”

Claims that the Chelmsford County Council make against a third party who has damaged Council equipment or assets are called ‘Green Claims’. Every year Essex Highways writes off more than £500,000 because of damage caused by vehicle drivers to things like bollards, streetlights and guardrails. You can help to claim back the cost of repairs, by reporting details of collisions or other damage you may witness to the Green Claims Team at [green.claims@essex.gov.uk](mailto:green.claims@essex.gov.uk). Should you be able to help, it is important to include key data such as:- Location (as precise as possible) • Description of item(s) damaged • Date and time of incident • Registration plate of vehicle and/or the description of vehicle • Photos of incident if possible. With this information the Team can claim from the driver's insurance company. All reports will be treated confidentially.

## Essex Children's Social Care rated “Outstanding”

Following a period of assessment in November 2018 Ofsted inspectors judged the County Council to be “outstanding” in its services to children, with consistently high standards applied across the County. This is a testament to the dedication and commitment of all those who work for Children's Services in Essex.

If you have any problems about County Council matters please let me know on Tel. No. **01245 421524** Mobile **07827 976997** or email [cldr.john.aldridge@essex.gov.uk](mailto:cldr.john.aldridge@essex.gov.uk).

**John Aldridge**





**Farleigh  
hospice**

**Volunteer  
with us**

**MEET NEW FRIENDS**

**LEARN NEW SKILLS**

**BE PART OF A TEAM**

**GIVE SOMETHING BACK**

**Speak to us today**

about volunteering opportunities



For information visit  
[www.farleighhospice.org](http://www.farleighhospice.org)



**BROOMFIELD**  
OPTICIANS

- Professional local eye care
- Bespoke service
- Over 20 years experience as a qualified Optometrist
- Proud to provide that individual attention to detail
- Friendliest caring team in Chelmsford

Call now to make an appointment with Louise

**Mr Anish Chauhan, Optometrist**

**24 Broomfield Road**

**Chelmsford, Essex CM1 1SW**

**T 01245 352803**

**[www.broomfieldopticians.co.uk](http://www.broomfieldopticians.co.uk)**



**Essex  
Ovencleaners**

Odour-free, eco-friendly domestic oven cleaning that will have your appliance looking as good as new and **ready to use straight away!**

We clean all kinds of appliances:

- Oven Cleaning
- Hob & Extractor Cleaning
- BBQ Cleaning
- Microwave Cleaning
- Range Oven Cleaning
- Fridge Freezer Cleaning
- Aga Cleaning
- Dishwasher Cleaning



Trading Standard  
Approved



All Staff are DBS  
Checked



Safe & Friendly  
cleaning process



Use your appliance  
straight away

[info@essexovencleaners.co.uk](mailto:info@essexovencleaners.co.uk)

t 01245 451 003 m 07816 762 869

[www.essexovencleaners.co.uk](http://www.essexovencleaners.co.uk)



**BLIXES FARM SHOP**

Est: 1920

**HUMPHREYS & SONS**

Est. 1920

TRADITIONAL WHOLESALE BUTCHERS

- Home Produced Beef
- Homemade Sausages & Burgers
- BBQ Meats & more...

**Treat yourself at our <sup>POS</sup> counter;**

- Homemade Pies
- FRESH Bread, Pastries & Cakes

(All Made Daily)

And much more!  
Come and see for yourself!

Open 7:30am - 5pm (Mon-Fri) & 7am-12noon (Sat)

Blives Farm  Ranks Green  Fairstead  Chelmsford  Essex  CM3 2BH

**Tel: 01245 361 214**

**f /CHumphreysandSons**



# Highwood Landscapes & Purrfect Paving



**DON'T DELAY...CALL TODAY!**

## SUMMER SPECIAL DEALS

- Trees • Pruning • Hedge Trimming • Roots Removed •
- Topping & Rotovating • Turfing • Fencing • Garden Design •
- Decking • Patios • Block Paving • Drives • Tar & Shingle •

### PROPERTY MAINTENANCE

- Roofing • Chimney Repairs • Building Work •
- Flat Roofs • Guttering • Fascias & Soffits •

**01245 422 804 | 07711 606 561**

**www.highwoodlandscapes.co.uk**

Free written quotes & advice | 10 year guarantee on all work | 35 years of experience

Unit 1, The Paddocks, Highwood, Chelmsford, CM1 3PU • email [info@highwoodlandscapes.co.uk](mailto:info@highwoodlandscapes.co.uk)



**GENERAL CLEANING COMPANY**

*Established 1947*

Regular Service

Town and Country Districts

Office  
Windows  
Industrial  
Commercial  
Wasp Control  
Reach and Wash

Solar Panels  
Builders Cleans  
Fascias and Gutter  
Cleaning  
Tradition Window  
Cleaning

Sworders, Pleshey, Chelmsford, Essex CM3 1HU  
Tel: 01245 231535 • Mob: 07889 393866

**P SMITH**  
PLUMBING & HEATING

- BOILER SERVICES
- BOILER BREAKDOWNS
- FULL INSTALLATIONS
- SYSTEM UPGRADES
- PART L ENERGY EFFICIENT
- UNDER FLOOR HEATING
- LANDLORD REPORTS

**07801 817443**  
**01245 521127**  
smith-paul104@sky.com

**www.psmithplumbingandheating.co.uk**  
9 Redmayne Drive, Chelmsford CM2 9XF

[www.myersscott.co.uk](http://www.myersscott.co.uk)

**TECHNOLOGY SUPPORT**  
EST.2004

**Services offered:**

- Technology Support for home and business
- PCs and Laptops supplied and repaired, wireless and wired networks, Apple repairs.
- Website design build and maintain
- Portable appliance testing
- Photo, film and cine film scanning and digitizing
- CCTV camera installation

**Contact:**  
**Myers Scott Ltd**  
**01245 362197**

[www.flatpackready.co.uk](http://www.flatpackready.co.uk)

**John Nicholson**  
Carpenter  
Painting & Decorating  
Handyman  
Flat Pack Assembly  
Door Hung  
And More...

**07597 851000**  
**flatpackready@gmail.com**



**YOUR COMPLETE  
BUILDING SERVICE**



**MAINTENANCE, PAINTING & DECORATING, GENERAL BUILDING  
WORK & EXTENSIONS, KITCHENS & BATHROOMS, FENCING  
METAL RAILINGS & GATES**

**NIGEL POPPER. NYPOP BUILDING SERVICES**

**MOBILE: 07711 817 266  
EMAIL: [nigel-juniper@ntlworld.com](mailto:nigel-juniper@ntlworld.com)**

**J. JEFFREY AND SON**



WE ARE CHELMSFORD BASED AND COVER A LARGE VARIETY OF PROPERTY MAINTENANCE AND IMPROVEMENTS.

- PLUMBING AND DRAINAGE
- BATHROOM AND WETROOM INSTALLATIONS
- FENCING
- GATES
- DECKING
- SHED BASES
- TREE SERVICES / HEDGE CUTTING
- LANDSCAPING
- PROPERTY RENOVATING

**FULLY INSURED  
LICENSED WASTE CARRIER**

**City & Guilds**



**JOSHJEFFREY@HOTMAIL.CO.UK  
07716 399 923**

**Local Decorator**

Competitive rates  
Professional  
Friendly

**Mike the Painter**

**Call today  
for a FREE, no  
obligation quote**

[/mikethepainteressex](https://www.facebook.com/mikethepainteressex)

07849833332

[mike.thepainter@outlook.com](mailto:mike.thepainter@outlook.com)

**HOBBS  
Electrical**

**Power To Chelmsford  
07891 400113**

**[William.r.hobbs@hotmail.co.uk](mailto:William.r.hobbs@hotmail.co.uk)  
[www.hobbselectrical.co.uk](http://www.hobbselectrical.co.uk)**



**Checkatrade.com**

## Spring Litter Pick

**Broomfield** joined forces with over 500,000 Litter Pick Heroes all around the country for the Great British Spring Clean. In Broomfield at least 17 sacks of litter were collected, together with the obligatory hub cap, wine bottles and tyre! Twenty-one people and a dog turned up including five children; Peter, Poppy, Fabian, Mathilde, Fabian and Albie who received Certificates for their great effort. Back at the village hall for refreshments of home-made cake and beverages, there was a great community spirit where compliments received from the public were shared.

It is a sad fact that just 24 hours after the litter pick, evidence of cigarette packs,



*Some of the litter picking volunteers*

cigarette butts and fast food wrappers once again adorned our streets. Unfortunately, the “couldn’t give a damn” attitude of the minority spoils our village for the majority! Don’t be a Tosser!

Make a note in your diary that our next litter pick will take place on Saturday 14th September at 10.30 am. Look out for the banners on Angel and Church Greens. If you can help, even for just one hour, it would be greatly appreciated.

### Sue Hubble



## Village Amenities Committee would like to thank Goodgym for their hard work preparing an Allotment Site for a new allotment holder and for providing this article.

Thirteen of us met at Mildmay Gym and set off for our task at Broomfield allotment site. It seemed like it might rain, however, we were grateful that there was only a small shower. The first set, led by Joel got away from the rest of us quite a few times on the way, but we all made it there in the end.

We met **Sue Hubble** at the allotment site; she provided us with some tools and showed us



to the plot we were to work on. Our task this evening was to turn the plots, preparing them for the new spring and summer season.

The highlights were: **Catherine** found a cuddly bunny, **Rachel** found a huge worm, and we spotted a fox at the other end of the allotments! Everyone worked very hard, and we managed to turn each of the marked-out rectangles ready for planting. Gerry and Andy continued to work, however the rest of us had finished, and we were so cold that we knew it was time to go.

We headed to our old favourites, the Avenues, and completed some ups and downs at our own paces. We met at the bottom of Second Avenue and jogged back to Anglia Ruskin University. Amazingly, it was still light by this point. That means we’re now in the season where all our Goodgym tasks will be in the light for quite a few months.

Next week, we are being filmed by Active Essex to promote all the good we do!

### Laurie Glendinning

EST. 2017

# DRESS CODE

*Nine*

BY APPOINTMENT ONLY  
BOOK YOUR VIEWING  
BOUTIQUE

BRIDESMAIDS  
BRIDAL GOWNS  
MOTHER OF THE BRIDE & GROOM

01376 587 949  
DRESSCODENINE.CO.UK

Unit 21 Allshots Enterprises, Woodhouse Lane, Kelvedon CO5 9DF

Boilers • Bathrooms • Drainage • Heating • Kitchens



O.R Plumbing & Heating

Plumbing and Heating services at affordable and competitive prices, call today for a free quote.

01245 440320 | 07512 541652

O.R Plumbing & Heating

www.orplumbingandheating.com



**DANBURY**  
Fencing Ltd

VISIT OUR ONLINE SHOP

**THE FENCING SPECIALISTS**

Witham  
01376 502020  
www.danburyfencing.com



**HOME CLEAN DIRECT**



Home Clean Direct is a local family run business which offer exceptional Carpet, Rug and Upholstery Cleaning direct to your home.

- ✓ Highly Rated Local Business
- ✓ Full Trained and Insured
- ✓ Proud member of the NCCA
- ✓ Free Quotes
- ✓ Will re-clean if not totally happy with the result, for FREE

Contact us today!

01245 200585

info@homecleandirect.co.uk

www.homecleandirect.co.uk



@homecleandirect

# ANNUAL REPORT

From Broomfield Parish Council 2019

## Chairman's Annual Report 2019 Councillor John Barnes

**The term as Councillors has now come to an end and in theory we should have had elections for a new Council on 2 May. However insufficient numbers of candidates put their names forward so no election was necessary.**

It is a sad reflection of society as a whole that people seem very quick to criticise or offer opinions but are not prepared to give up their time to attend meetings and see how decisions are made or put their names forward to take part. We have numerous examples where villagers have complained or criticised decisions but when invited to come and talk about why those decisions have been made have not taken up the invitation. We have been criticised about communicating badly but I would say that communication is a two way process.

Being a Parish Councillor is an unpaid voluntary role. Although we do have one or two Councillors who represent political parties the Council is run on a strictly non-political basis, our full focus being on what is the best for the village. We need more people to take part in running Broomfield. We have a very able team of staff who manage the day to day operation so there would be no need to get involved at that level. What Councillors are needed for is to oversee operations and make the longer term strategic decisions about how we spend your money and what priority the various services in the village should have.

You would need to attend most of our regular meetings and also join one of the subcommittees: Village Amenities, which oversees everything external, The Village Hall, Planning and Finance - the last three I hope are self-explanatory.

Why not come into the office and meet either me or the Clerk, Mike Letch, and we can explain what is involved. There is absolutely no obligation, you might be pleasantly surprised about the level of commitment needed and the influence you could have. Becoming a full Councillor is not essential - you can just join a subcommittee to gain some insight and knowledge about what we do.

Now, as we come to end of our term as Councillors, I would like to thank all of my colleagues for the work they have put into managing the activities of the village. I think they should all be very proud of what we have achieved. In particular I would like to thank the Committee chairs - Sue Hubble who has recently taken over Village Amenities and is doing sterling work keeping our many projects on track. John Blake who chairs Planning and Trevor Jones who leads on Finance and the Village Hall.

There are many things we could highlight but a couple of smaller things are the acquisition of the telephone box opposite The Angel which is now a useful communication tool. We have also decided to install a defibrillator at the Village Hall which I am sure will save a life in due course.

We are keen to make as much use of the field behind the Village Hall as possible. Last year we identified that the location of the kickwall made it almost unusable for young people. It took time to organise but we agreed with the Football Club to move their pitch slightly. We were then able to move the kickwall and expand its facilities to a new position where it did not interfere with cars and is accessible any time. At the same time, we installed an outdoor table tennis table which is regularly used. Over time we hope to install more leisure facilities.

We have also not shirked from making difficult decisions. Putting a gate on the Village Hall carpark brought some criticism but it was essential to keep the parking spaces clear for people who had booked and paid to use the hall and quite reasonably expected to be able to park as they had been promised.

On a larger scale we continued to run a fabulously successful Village Hall which is in use virtually full time and is the envy of many parishes.

Planning is of huge importance to the village. Although we cannot make decisions we do have a voice with the City Council and the Planning Committee do review and comment on every planning application made in Broomfield. They do a great deal of work and we should all be very grateful to the Chair, John Blake and his team. In addition we are working on the development of a Neighbourhood Plan which will help influence planning decisions and increase our income from developments that are passed and built out. Again, John Blake, Sue Hubble and various others are working very hard to produce a well-researched, thorough and professional document that the City and County planners will respect.

In terms of long term legacy, we have the Adventure Cycleway which is advancing well. When finished I am sure it is going to become a focal point for young people, not only from Broomfield but the whole of Chelmsford and from much further afield. This project came about from various open days and surveys held around the Village. We owe a huge debt to Councillor Trevor Jones who has steered us through negotiations with Chelmsford City Council, the planners, contractors and various bodies who have made grants to help make this project possible. Without Trevor's dedication I doubt we would be where we are now.

It might not be the Oscars but our work has been recognised. The Essex Association of Local Councils (EALC) awarded us their Innovative Work Award, and we were awarded Highly Commended in the Essex Village of the Year competition.

I would also like to record my thanks to Karen Hurrell and Kathryn Cameron who both served us well as Clerk and Village Hall Manager during this last term of office. Kath moved on to a new role in Maldon and Karen stepped aside to become assistant Clerk. Mike Letch then joined us as Clerk and has made a tremendous impression. We owe thanks to all of our staff who work so hard to keep our services running so smoothly.

Finally, I would like to recognise those people who are no longer on the Council. Tim Tranquada who did a huge amount of work as Chair of Village Amenities who resigned last year. Karen Charlton and Selina Matthews have not stood for re-election but we need to thank them both for everything they have done during their terms as Councillors, particularly Selina who has, and continues to do a great deal of work editing the Broomfield Times - a publication we are all very proud of.

Then we have Trevor Jones and Geof Garwood who both stand down after many years of tremendous work. The things they have achieved and contributions that they have made are far too numerous to mention but they both leave an unforgettable legacy and will be very greatly missed.

So we move into a new term of office with a smaller, but dedicated team of unpaid volunteers doing their very best to continue to improve Broomfield as a place to live and play.

## NOTICE

### FINANCE REPORT

Unfortunately the financial report for 2018/19 was not finalised at the time of going to print and will therefore be published in the next edition of Broomfield Times

## Planning and Property Committee Annual Report 2019

Councillor John Blake

**It's been a busy year, but it started with a welcome victory. Twelve months ago, we'd just learned that Essex County Council (ECC) was planning to sell the reserved primary school site to a private developer. Along with many residents, we were outraged that ECC might make a large profit out of the failure to build the promised new primary school. We unanimously decided to fight this, and with the sterling support of our County Councillor John Aldridge, we persuaded ECC to back down and withdraw their plan.**

Much of the year has been dominated by the final stage of the Chelmsford Local Plan – the 'Examination in Public'. I reported on this in detail in the last edition of Broomfield Times, so what follows is just a brief summary.

The 'Examination in Public' means that an independent planning inspector (appointed by the Government) 'examines' or considers the Local Development Plan that Chelmsford City Council has drafted. Any organisation or individual who is unhappy with the draft Local Plan can submit documents to the Inspector and, if she invites them, can also attend the public hearings to explain their objections. Big developers are usually represented, sometimes by a team of experts led by a barrister or a QC. The Committee decided that we also needed to be represented by a professional planning consultant and traffic expert, as we still have major concerns about the proposed development 'north of Broomfield' and its effect on traffic levels through the village. Of course, we have nothing like the budget of developers, so we got together with our neighbouring parish councils (Chignal, Little Waltham and Writtle) who have similar concerns, so that we could share costs and get the biggest bang for our very limited bucks.

Nonetheless, we had to do a massive amount of preparatory work to make sure our consultants were properly briefed. I also attended all the sessions that had a bearing on Broomfield – four days in all – in case they needed to check

any facts at the last minute. However, I was very glad that they were doing the talking. It's a professional judgement whether to raise a point or not. If it's already been raised by someone else, there's probably no need to raise it again and it may only annoy the Inspector. At time of writing, we're still awaiting the Inspector's final decision on whether the proposed Local Plan is 'sound' or not. If not, she'll say if it can be made 'sound' with some changes. Or she can throw the Plan out altogether, in which case Chelmsford City Council would have to start the process all over again. There will definitely be some changes as she has already rejected the City's attempt to introduce 'green corridors' to the south-east of Chelmsford. These would have resulted in even more development pressure on remaining green areas like Broomfield in the future, so we're relieved about this.

The Committee has also considered the speed of traffic in School Lane; the new cycleway and how to limit its impact on the landscape; the use of land at Brooklands; and improving road safety in the northern part of the village (to mention just a few items). These are mostly ongoing. We greatly appreciate the time that residents have spent coming to our meetings to explain their concerns, so that we can make the most informed recommendations possible. Finally, as it's the end of councillors' four-year term, I'd like to thank the current Committee members Angela Thomson, Ros Mercer and Wendy Daden for their time and hard work. And especially Geof Garwood, who retired during the year after a long commitment to standing up for our village on the planning and development front.



**Land south of Broomfield Place (reserved site for new primary school) – saved from commercial housing development.**



## Broomfield Village Hall Report 2019

Councillor Trevor Jones

**It has been a year of much change at the Village Hall. Our Secretary for the last eight years, Kathryn Cameron, left for a new post. She has now been succeeded by Steff Smith who many of you know already from the Scouts and from the Village Hall.**

Our "Adventure Cycleway" is now nearing completion, this facility will add another new dimension to all that has been achieved over the last twelve years. In addition to the obvious use for children to learn and hone their skills with bikes and scooters, it will also provide access in all weathers for those with limited abilities to enjoy Centenary Wood.

The new car park will enable us to re-position our existing car park and re-surface and mark it out. The plans will provide a greater level of security. We also intend to upgrade lighting with new security lights and start the process of switching to LED. Inside the hall, following the laying of new flooring in the foyer, we will



look to re-decorate and provide more storage. Much has been achieved over the last twelve years. The complete rebuild of the Village Hall providing a hub for 50 or so interest activities every week as well as being a much used

children's party venue and our Stay-and-Play every Monday. Outside we have our multi-use 3G area, gym equipment, the children's play park and re-located kickwall area.

Over £600,000 of new investment – the money coming as a result of much hard work and from many different fundgiving grant bodies. The staff of the Parish Council have been invaluable during this period but the work of volunteers has been a very significant factor in its success, without them none of what is there would have happened; we need more help so if you have time to spare come and join us and lend a hand for your village.



Family-run business with over 20 years of experience

Trading Standards Approved Aerial Installer

Quality workmanship at sensible prices



digital   
Approved Member

# Andy's Aerials

Essex CM1 **Your local aerial installer**

- » **New aerial & satellite installations**
- » **Aerial & satellite repairs**
- » **Extra TV points**
- » **TV wall mounting**
- » **System design & install**
- » **Freesat & YouView installations**
- » **Sky Installations-Repairs & Upgrades**

Freephone **0800 77 97 047**

Mobile **07916 305 977**

Mobile Local Rate **0333 900 333 2**

Email **andy@andysaerials.com**

**www.andysaerials.com**

# It's Your Village, Have Your Say

## ON BROOMFIELD'S FUTURE

### Neighbourhood Plan Annual Report 2019

Councillor John Blake

**Some Broomfieldians with more exciting social lives than ours may wonder what on earth a neighbourhood plan is! So, we always like to start off with a quick recap.**

A neighbourhood plan is a way for a village or community to plan its future development over the next 20 years. It's mainly about planning – for instance, where new houses, shops or offices should be built, of what type, what they should look like and what infrastructure should be provided. A neighbourhood plan can't stop development, but it gives local people more say about what happens.

Drawing up a plan involves a huge amount of consultations and research, as it's a legal document and must meet the same sort of standards as any formal planning document. But to be positive, it's our community's chance to have a say in how our village develops, rather than leaving it entirely to developers and the planners. And we think that's quite exciting, even if it's not good for the old social life!

A year ago, we had a major exhibition to show the results of the Residents' Questionnaire. If you missed it, don't worry – there was a detailed report on the exhibition in the Autumn 2018 edition of Broomfield Times (available on the website). And there are summaries of the Questionnaire results at [www.broomfieldessex.co.uk/np](http://www.broomfieldessex.co.uk/np)

Since then, we've been working on the evidence base that every neighbourhood plan is required to build, to ensure that it is based on robust evidence. The first of these is our professional Landscape Character Appraisal, carried out for us by Alison Farmer Associates.

It provides a lot more objective detail to add to the opinions that local residents gave us in the Questionnaire. It also contains useful guidance about how the quality of our countryside can be maintained and even improved. You can read it on our website.

The second is a Housing Needs Assessment, produced by a company called AECOM. It looks at a range of evidence to assess what type of new housing is needed. Again, it tends to match the views residents have told us, but it adds hard data, so can be used as the basis for policies to encourage new housing to respond to local need, not just to the commercial interests of developers. Reassuringly, the draft we have seen suggests the amount of new housing needed in Broomfield is well within the amount that Chelmsford has already allocated for the Broomfield area in the draft Local Plan.

AECOM will carry out some further work for us over the summer, all paid for by the government. Once that is complete, we can start to draft the policies that will actually make up the Plan.

Alongside the policy work, we have developed proposals for a safe cycle path network, because 'doing something about traffic' is such a big issue for our village. We have persuaded the Cabinet Member for Highways and Transportation (Essex County Council) to authorise an initial feasibility study on our proposals.

In the Winter, there will be more consultations with local residents. Then, after any necessary changes have been made, the plan will be handed over to Chelmsford City Council.

They carry out even more consultation, arrange for an independent examination to take place and then organise the local referendum when every voter in Broomfield gets a final say.

## Village Amenities Committee Councillor Sue Hubble

### Centenary Woods:

A small working party met at Centenary Woods in April to give it the first tidy-up of the year. It was pleasing to see that the newly planted apple tree was thriving with plenty of blossom. Cowslips and wildflowers were in full bloom and the bluebells looked as though they were about to burst open. A large amount of watercress was taking over part of the spring and it was decided to give it a "thin out" on our next visit.

It was sad to see so much litter; especially as our litter pick group cleared it two weeks previously. Broken beer bottle glass took a long time to clear up as slithers of it were nestling in the bark around the bench. Well done and many thanks to those who helped!

### Allotments:

There are still a couple of half-plots available, one of which Good-Gym kindly worked on. Thirteen members jogged up to the site, worked hard digging plots over for a full 30 minutes and then jogged off again! (see page 12). Whilst writing this in April, I have no idea how many allotment plot holders are going to enter the Open Day scarecrow competition in May; hopefully we will have lots of scarecrow pictures in the autumn edition!

### Parish Pathway Partnerships (P3):

Unfortunately, we were unable to find a leader for P3 and it was agreed to pass this back to Essex County Council to maintain. If you notice a public footpath that requires attention, you can report it direct to Essex County Council Highways on their website.

### Village of the Year:

Broomfield have passed the first round and have now entered the final round! This means

judges will be visiting the village to judge Broomfield for themselves and to find out what great things go on!

### Vehicle for Village Attendant:

After months of deliberation, it was agreed that a used petrol van will be purchased for our village attendant. Our attendant has used his own vehicle in the past and more recently a van has been hired.

### Replacement of Basketball Backboard and Hoop:

Yet again the basketball hoop has been vandalised. To replace and upgrade with a much stronger backboard and hoop will cost hundreds of pounds. It was therefore agreed that the Deputy Clerk will contact a blacksmith to enquire about welding a hoop on to the kick wall.



Photo by Markus Spiske on Unsplash

## D.S. EAGLE

### High-class family butcher

**Prime quality beef, pork,  
lamb and poultry plus  
home-made sausages  
and burgers**



## BBQ SEASON

We specialise in home-cured gammon hams and bacon, produced on the premises in the traditional way. Come and visit our shop and meet our qualified, experienced and friendly staff for helpful advice - you'll be very welcome.

**01245 420516      07810 712765**

9 Wellfield, Writtle, Chelmsford, CM1 3LF

[www.eaglebutchers.co.uk](http://www.eaglebutchers.co.uk)

# Has Your Double Glazing Steamed Up?

Established for over a decade Cloudy2Clear windows have become a leading company for glass replacement. Issues with double glazing can often be gradual and may only be noticed during a clear sunny day or during the winter. A failed glass unit may no longer provide you with the protection you need or be energy efficient. Why not spend a few minutes checking your home to see if you have any failed double glazing? If you act now you can avoid these problems.

Now, you may think you need to replace the

whole window including the frames and all the hardware, however Cloudy2Clear have come up with a simple and cost saving solution... Just replace the glass!!

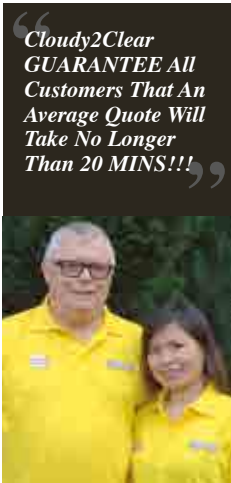
If you see condensation in your windows just visit our website or give us a call on **0800 61 21 118**. We will send out our highly experienced engineers for a free no obligation quote. A **Cloudy2Clear quote takes on average no longer than 20 minutes**. Once the quote is completed, we will sit down with you and explain the problem and tell you how we can fix it.

With years of experience Cloudy2Clear have a wealth of knowledge and are recognised as a Which Trusted Trader, **plus our work is backed by an industry leading 25 year guarantee.**

Cloudy2Clear also replace faulty locks handles and hinges on all windows and doors.

Your friendly local Cloudy2Clear specialist is Chris Miller and he services the Broomfield & Chelmsford areas.

So, if your windows are steamed up, broken or damaged give Chris a call for a free quotation on **0800 61 21 118**.



## Cloudy2Clear Windows... Service With A Smile!

Cloudy2Clear Are A...



Which? Trusted Trader

All Glazing Backed By Our

**25 YEAR GUARANTEE**



Priority Freephone

**0800 61 21 118**

[www.cloudy2clear.com](http://www.cloudy2clear.com)

Broken Or Damaged Windows? Faulty Locks, Handles, Hinges?



# Pleshey Tree Services



- Friendly, professional service
- Free quotations & advice
- Pruning & Shaping
- Felling & Removing
- Planting & Advice

Tree Surgeons & Arborists

**01245 362988**

[www.plesheytreeservices.com](http://www.plesheytreeservices.com)  
[tomcrees@plesheytreeservices.co.uk](mailto:tomcrees@plesheytreeservices.co.uk)

NPTC qualified | Council approved | Work compliant to BS3998 & BS5837 | Fully insured



## Rooftops (Contractors Ltd)

We carry out all aspects of Roofing, Guttering Fascia & Soffits, all types of Flat Roof Systems, New Roofs, Repairs, Lead & Zinc Work, Rendering, Pointing & Brick Work, Loft Conversions

All staff are CRB checked & we carry public liability insurance.

13 Old Croft Close, Good Easter, Chelmsford, Essex, CM1 4SJ  
 Telephone: 01245 230971 Mobile: 07970 170062/3  
 Email: [roof.tops@hotmail.co.uk](mailto:roof.tops@hotmail.co.uk)



# PROPHET

Professionals that care to care  
 Where quality of care is paramount



Provide Care Organisations with relevant Staff



Find employment for people who want a specific role in Care

Prophet Care  
**SPECIALISE**  
 in recruitment for the Care Industry

**01245 408600**



[Info@prophetrecruitment.com](mailto:Info@prophetrecruitment.com)  
[www.prophetrecruitment.com](http://www.prophetrecruitment.com)

# Gary K. Steggall



- + Tree Surgery
- + Reductions
- + Felling
- + Hedge Trimming
- + Seasoned Logs
- + Site Clearance
- + Free Estimates
- + Fully Insured
- + **£5m Public Liability**

**07971 696375**  
**01245 496758**

[garysteggall499@btinternet.com](mailto:garysteggall499@btinternet.com)



City & Guilds  
 Qualified



From a tap to a full bathroom

**01245 478111**  
**07710 358347**

Local family business  
 established 1997

- Boiler Renewals & Repairs
- Central Heating & Repairs
- Bathroom Suite Installations
- Pumps & Port Valves
- Taps, Ball Valves, etc
- All Work Guaranteed
- Female & Male Engineers



[www.lkgdaughtersplumbing.co.uk](http://www.lkgdaughtersplumbing.co.uk)



# Broomfield Cottage Gardeners' Society

www.broomfieldcottagegardenerssociety.co.uk

## BRIEF REPORT OF AGM

27th FEBRUARY 2019

**The AGM had a good turnout of 45 members on the night.** After an introduction by the Chairman, the previous year's minutes were agreed, then the Chairman and several Committee Members presented their reports.

The Chairman paid tribute to the retiring members of the committee, Ron Marlow and Maureen Etridge, who have both served the Society for many years. Their contribution to the Society will be missed, but hopefully the new committee members will be able to fill their shoes and will soon get to learn their new roles.

### The below committee members were elected for 2019:

#### Chairman

Roy Hooper

#### Secretary/Membership Secretary

Angela Wild

#### Treasurer

Nick Welch

#### Shows Secretaries

Selina Matthews

Christine Welch

#### Open Gardens Manager

Dick Chapman

#### Social Media/Evening Talks Manager

Annette Swift

#### Trading Centre Manager

Malcolm Deacon

#### Non-Committee positions:

#### Newsletter/Website Editor

Philip Richards

Our chosen Charity for the year ahead is St. Mary's Church Spire appeal. One of our Vice Presidents, Malcolm Taylor, is walking the Pilgrims Way in Spain, to raise funds for the Church Spire renovation (see report page XX), so it was lovely that so many members supported this nomination. The Chairman reported that the Society had raised £753 for last year's Charity, Grapevine Essex, for people

with learning difficulties, and a presentation was made to its Chairman, and one of our Vice Presidents, Peter Turrall. The Chairman thanked all members of the Society who had contributed towards this very worthwhile cause.



**Roy Hooper presenting a cheque to Peter Turrall for funds raised by the Society in 2018**

We then had an evening talk by Peter Turrall on his experiences while working for Marconi. Peter stepped in at short notice after the expected speaker could not attend, so thank you Peter for rescuing the night.

### SUMMER FLOWER & PRODUCE SHOW

Our Summer Flower & Produce Show is on Sunday 14th July from 2pm to 4pm at the Broomfield Village Hall. Everyone is welcome. Free entry for members, non-members just £2 per adult (children free). There are lots of different classes for flowers, fruit and vegetables, cookery, preserves, crafts, photography and children's classes. Apart from the exhibits there will be a plant stall, refreshments, and a raffle so what not drop in, enjoy a cup of tea/coffee and a piece of cake and see what we do – better still why not enter something. There is no charge for members to enter a class and it's just 50p per class for non-members (all children's entries are free). Exhibits are staged between 8.30am and 10.30am on the day. It's good to have some

new competition – you may even win a prize. For further information or a Schedule please contact Christine on 01245 355505 or Selina 01245 443108 or email [bcgsshowsecretary@gmail.com](mailto:bcgsshowsecretary@gmail.com). We look forward to receiving your entry forms by Wednesday 10th July.

### SHOW CHALLENGES

Every year we have a number of show challenges for our members to show what they can achieve starting from the same point. This year for the Summer Show we have the Fuchsia Challenge (Class 143), Homemade Loaf Challenge (Class 410). For the Autumn Show we have the Dahlia Challenge (Class 101), the Chrysanthemum Challenge (Class 116), the Chilli Challenge (Class 221) and finally we will again be running 'grow the tallest Sunflower'.

### OPEN GARDENS

For all of our members the Evening Garden Visits start on 23rd May with a visit to Nick Smiths Nursery in Roxwell. Visits to members' gardens commence on 6th June on the first and third Thursday of the month, 7pm until 9pm, finishing on the 1st August.

### BARN NEWS

We have a wide range of general gardening products on sale including a large array of seeds at 25% discount. Opening times are 2pm-3pm on Fridays and 10am-noon on Sundays. In order to benefit from the Barn, you will need to join the Society. Membership is £4.00 p/a, £3.00 p/a for Senior Citizens & £2.00 p/a for Young Gardeners (up to and including 18 years of age). Membership can be obtained at The Barn at the Broomfield Allotments site or calling our Membership Secretary, Angela Wild on **01245 441412**.

### ASSISTANCE FOR THE COMMITTEE

The Committee is small in number and we are looking for any assistance that any of our members can provide. If you can

free up a couple of hours to help us with the upcoming Summer Show, that would be really appreciated. If you are interested please contact our Membership Secretary, Angela Wild on 01245 441412.

### FACEBOOK SITE

We now have a facebook page where regular updates are issued. Please search in Facebook under "Broomfield Cottage Gardeners Society" or use type the following link into your browser: <https://www.facebook.com/groups/355859514864259/>

### MEMBERSHIP

If you would like to join the Society, please contact Angela Wild (Membership Secretary) on **01245 441412** or look at our website: [www.broomfieldcottagegardenerssociety.co.uk](http://www.broomfieldcottagegardenerssociety.co.uk) for more information.



**Broomfield Cottage  
Gardeners' Society**



# FLOWER AND PRODUCE SHOW

**Sunday 14th July 2019  
Broomfield Village Hall**

rear of The Angel, Main Road, Broomfield, CM1 7AH



**2.00pm to 4.00pm**



**Plant Stall Refreshments Raffle**

Cookery, Preserves, Craft, Photography and Children's Classes

For Schedule & Entry Form please phone Show Secretary on 01245 355505 or 01245 443108 or email [bcgsshowsecretary@gmail.com](mailto:bcgsshowsecretary@gmail.com)

**Admission £2**

**Members FREE**

[www.broomfieldcottagegardenerssociety.co.uk](http://www.broomfieldcottagegardenerssociety.co.uk)

## Chelmsford & District Fuchsia Society Annual Display Weekend

**For an event to last 34 years** it must be pretty special, the fact that it is run by volunteers to raise money for local schools makes it amazing. The annual Chelmsford & District Fuchsia Society Display has raised an incredible £95,000 over the years and the group are working hard to add to that figure this year. However visitor numbers has been dropping over the past few years and the Display Committee are keen to encourage visitors back to this stunning event.

The colourful fuchsia display takes place at St John Payne School and the Society raise funds for the local Columbus School, previously know as the Woodland School. When the event started it was for the Woodlands School respite holidays held at St John Payne School. For one week during the summer holiday, the classrooms were turned into dormitories and the 6th formers became a Buddy for the children of Woodlands. The money we raised was spent on taking the children out on coaches for the day. Since the holiday scheme stopped the money has been activities from adventure playgrounds to music lessons.



**TEHY HOME CARE**  
from caring comes courage

**Care Support Workers required for  
Adult/Children with Excellent rates of pay.**

Evenings/Weekend work | AM/Lunch/Tea/Bed calls  
Mileage Allowance | On going training  
NVQ Desired but not essential | Immediate Start  
Areas 'covered': Braintree, Chelmsford, Basildon,  
Little Baddow, Tollesbury, Halsted, Great Dunmow

*"We are a registered member of Dementia Friends and also a  
proud member of The Heart and Sole Walking Group..."*

Services we offer –

-  High quality domiciliary care service
-  Tailored to individual needs and preferences
-  Friendly and well trained staff

**Request a free Home  
Care Assessment**

**01245 697300**  
**enquiries@tehycare.com**  
**www.tehycare.com**

189 Main Road, Broomfield Place, Chelmsford, Essex CM1 7EQ

## CHELMSFORD & DISTRICT FUCHSIA SOCIETY ANNUAL FUCHSIA DISPLAY CRAFT & GIFT SHOW

SATURDAY & SUNDAY  
3<sup>RD</sup> & 4<sup>TH</sup> AUGUST 2019

10AM – 5PM SATURDAY  
10AM – 4PM SUNDAY

ST JOHN PAYNE SCHOOL  
PATCHING HALL LANE  
CHELMSFORD CM1 4BS

Entry fee:  
£1.50 for adults  
free for under 16



- ✦ All day refreshments
- ✦ Plant auction 3pm on Sunday
- ✦ Plant sales and growing advice
- ✦ Book stall
- ✦ Tombola and raffle
- ✦ Ample free car parking

Proceeds to Columbus School & College  
for special needs students

The Fuchsia display is made up from hundreds of plants grown by the members, who have years of experience. There are so many varieties on display, it is a wonderful sight. There are fuchsia plants for sale as well as local Craft Stands, tombola, raffle and second-hand books. Food and Drinks are served all day. There's plenty of free parking as well!

Press Officer Janet Wall said, 'I have been involved with our Fuchsia Society for a long time and our members work so hard to make this Display look amazing. Our sole drive is to raise as much money as possible for the Columbus School children and we need the support of everyone to do this. If you love your garden, you'll love our Display!

Come and see this wonderful sight and help us raise money for this fantastic cause. The event takes place on Sat 3 & Sun 4 August at St John Payne School, Chelmsford CM1 4BX. 10.00am – 5.00pm Sat and 10.00am – 4.00pm Sun. If you'd like to find out more please call

**Janet Wall on 01245 281962**



## BROOMFIELD FOOTPATH SOCIETY

The 2019 programme of walks is now well underway with regular fortnightly walks on a Sunday afternoon switching to evening walks in May. We've had a regular attendance of around 15 walkers enjoying the spring sunshine. Why not come and join us.

No walks are longer than 3-4 miles and we are a **very friendly bunch!**

All Walkers to meet at Church Green, Broomfield. Lifts available for those without cars.

### Wednesday evenings meet at 7:15pm.

June 5	Compasses, Littley Green	Cars to Littley Green
June 12	Writtle - Admirals Park	Cars to Writtle, (Duck Pond)
June 19	Rodney Inn, Little Baddow	Cars to Rodney Inn
June 26	Spotted Dog, Bishops Green (Nr Dunmow)	Cars to Bishops Green
July 3	Square and Compass, Fuller Street	Cars to Fuller Street
July 10	The Hare, Roxwell <b>NEW</b>	Cars to The Hare
July 17	Rose and Crown, Great Waltham	Cars to Great Waltham
July 24	The Walnut Tree, Broads Green.	Cars to The Walnut Tree
July 31	The Three Elms circular	Cars to The Three Elms

### Sunday afternoons meet at 2:15pm.

Aug 11	Ingatstone	Cars to Ingatstone Hall
Aug 25	Stacey's - Beaumont Otes - Bushy Wood	Cars to Broomfield

ALL ARE WELCOME

Contact - Stuart & Christine 01245 261102 or Pam & Gerry 01245 441021

Follow us at [www.facebook.com/broomfieldfootpathsociety](http://www.facebook.com/broomfieldfootpathsociety) or [www.broomfieldessex.org](http://www.broomfieldessex.org)

**A & W Gowers Limited**  
Manufactures & Installers of Bespoke Joinery  
**(01245) 362737**



Experienced professionals specialising in bespoke staircases, conservatories, windows, doors and all types of fitted furniture



Please contact us for personal expertise and service



info@awgowers.co.uk • www.awgowers.co.uk  
No. 4, The Grange, Warners Farm, Howe Street, Great Waltham, Chelmsford, Essex CM3 1JN



## Pot Shop



**Garden Centre**  
& Pet Supplies

- Plants
- Wild Bird Care
- Bark
- Solar Lights
- Garden Equipment
- Décor
- Furniture

**Farm Shop**

- Fresh Fruit and Veg
- Fresh Daily Bread
- Local Potatoes
- Free Range Eggs
- Cakes
- Jams & Pickles
- Cookware
- Crisps & Snacks

*Open 7 days a week*  
**01245 465 895**



**Pot Shop Garden Centre**



---



*Flowers By Candice*  
Florist and Gift Shop

**Flowers & Gifts for All Occasions Order Online, By Phone, In Store & Facebook**

[www.flowersbycandice.co.uk](http://www.flowersbycandice.co.uk)

**01245 460 600**



**Flowers By Candice**



**Damases Lane Boreham, Chelmsford, CM3 3AL**



## BABIES LOVE IT at Sing and Sign

**Sing and Sign had a fabulous Spring term at Broomfield Village Hall and we look forward to welcoming yet more babies and toddlers to our classes.**

It is so lovely to be an established group in the Broomfield community and can't thank you enough for your support and enthusiasm. We have bid a fond farewell to some of our older Sing and Signers and wish them well on their continued journey of communication and language development. Many of our little ones are graduating to the next level and have lots of new songs and signs ahead of them; their amazing signing adventure has only just begun.

Sing and Sign is the original baby signing programme still going strong in its 21st year. It is simple in its approach, drawing on the value of music to establish the building blocks of speech and language development, whilst nurturing a quite incredible connection between parent and baby. With tunes and words that are easy to learn, you will soon be singing our songs in your sleep! What's more, you will be having so much fun with your little one, building on those natural gestures that they already have, to teach them a language that you can both understand.

We have three different level of classes running for Babes (0-6mths), Stage 1 (6-18mths) and Stage 2 (15mths+) and it is never too late to start enjoying communication with your little one.

Summer Term bookings are very much open and booking fast. Remember that space is limited so we operate a first come, first served policy. If you have any questions please do get in touch and you

can find us on Facebook too for all updates and offers.

**We always welcome you to attend a class for FREE if space allows so that you can appreciate what everyone is talking about!**

[martinebrockman@singandsign.co.uk](mailto:martinebrockman@singandsign.co.uk)

[www.facebook.com/singandsignessex](https://www.facebook.com/singandsignessex)

[www.sasessex.co.uk](http://www.sasessex.co.uk)

[www.bookmyclass.co.uk/singandsign/?FID=76](http://www.bookmyclass.co.uk/singandsign/?FID=76)



**RGW INSTALLATIONS** Ltd.

Plumbing and Heating Specialists

**Richard Watters**

Plumbing and heating engineer

**M** 07758 252 707

**T** 01245 200 591

**W** [rgwinstallations.com](http://rgwinstallations.com)

**E** [richard@rgwinstallations.com](mailto:richard@rgwinstallations.com)



41 Peggotty Close, Chelmsford, CM1 4XU

## Orchard Springs WI

Orchard Springs WI, along with a number of other local WIs, made this Suffragette Flag adding their individual logo as the flag moved around the county to celebrate the 100 year anniversary of the Suffragette Movement.



*Sue Dunn, Eileen Chapman, Kate Clarke, Pam Chase and Alice Egan*

The craft group's fine embroidered work was then displayed at the Federation of Essex Women's Institutes Annual Meeting in March. Sadly we were let down by our speaker for the March meeting of Orchard Springs WI and at the last minute we were rewarded by a grand entrance from "Henry V111" who regaled us

with the inside stories on his six wives. He had the audience in fits of laughter and certainly saved the day.

*Sheena Ager*



### STOP PRESS

Informal meeting to discuss future of **Broomfield library,**

11am on Saturday 1st June at

**the Angel, Broomfield** with  
**Angela Thomson & Sue Hubble**



## Mackenzie ART

## Classes

Daytime and evening art courses and Art & Sip sessions available

Six Week Daytime Art Course -  
Tuesdays: 12pm - 2pm, Broomfield Village Hall

Evening Art Club/Art Course  
Thursdays: 7.30pm - 9pm, Little Waltham

Art & Sip Sessions  
Last Thursday of every month: 7.30pm - 9.30pm, Little Waltham

Private Art & Sip Parties  
Saturdays: 5pm - 7pm, your event location/Little Waltham venue

James Mackenzie has a Fine Art Degree and a Postgraduate Certificate in Education (PGCE). He is an experienced qualified art teacher and a professional artist

www.artandsip.co.uk  
07796673783  
mackenzieartandsip@gmail.com

## U3A Broomfield

### Spring has arrived bringing renewal of all things natural, including the U3A management committee!

Last year, when it came to the time for nominations to replace the outgoing committee members, we were very short of volunteers, and consequently the committee was somewhat on the small side. With several members planning to step down for 2019/20 we really needed to have a big increase in numbers prepared to volunteer their time to join and share the various oversight and management tasks. Fortunately, enough members stepped up to fill the breach and Broomfield U3A will be able to continue to



develop and flourish in the coming year! Until you actually retire, it can be easy to assume that once you have ceased work and/or caring for growing children you have plenty of time on your hands, but the reality for many of us who are 60+ is that 'spare' time is rapidly filled with other activities and commitments.

So finding time for additional voluntary tasks such as leading/tutoring groups and involvement in committees is not always that easy!

So thanks are due to all those hardy and committed folks who help keep Broomfield U3A 'buzzing'!

Glynn Wadeson

## Susan Keeble Art Class

**The Art Class continues to be popular among residents of Broomfield and further afield.** It runs on Thursday afternoons, during term time, from 1.30pm to 3.30pm.

Over the years we have practiced a wide variety of techniques and lots of different mediums. We have looked at the work of some of our favourite artists, and learnt how they painted. Each term the students decide on four projects to explore.



In the Summer term they will first be working in Line and Wash, then painting Flowers, possibly in the style of a famous artist. Next they will have some 'back to basics' drawing lessons, then lastly, looking at how to

incorporate figures into their landscape paintings.

Each lesson is approached in a fun way, with slide shows, demonstrations and plenty of examples and guidance. The classes are designed to be suitable for all levels of ability, so while some students have been coming for years, others are just starting out.

If you are interested in joining the class, or would like to find out more, please contact me,

Susan, on **01277 353973**, or have a look at my website: [www.susankeeble-artist.com](http://www.susankeeble-artist.com), where you will be able to contact me by email.



### Best Foot Forward

EMMA YOUNG MCFHP MAFHP  
FOOT HEALTH PROFESSIONAL

Best Foot Forward offers a professional and friendly foot health care treatments from the comfort of your home. SMAE Institute trained, fully insured and DBS Checked.



**Foot treatments include..**  
 Nail Cutting · Nail Filing · Corns  
 Callus/Hard Skin · Nail Care  
 Fungal/Thickened Nails Verrucae  
 General Foot & Athletes Foot  
 Dressing & Paddings · Diabetic Foot

**For further enquiries please call  
 Emma: 07785923873**



EAT . DRINK . CELEBRATE



# SUNDAY LUNCH?

*Three Courses:*  
£24.95

*Includes coffee/tea  
and chocolates*

Our Sunday Lunch Menu includes traditional home cooked roasts such as Roast Scotch Sirloin of Beef, Rack of Pork and Chicken Breast, each served with all the trimmings!

To book your table call: **01245 440 005**

[www.channelsestate.co.uk](http://www.channelsestate.co.uk)

- . *Fresh homemade dishes*
- . *Locally sourced ingredients*
- . *Beautiful restaurant views*



**Channels**, Pratts Farm Lane East  
Little Waltham, Chelmsford CM3 3PT



**CHANNELS**

— *Bar & Brasserie* —

## Shimmy'n'groove

**We are now in your community 5 days a week offering a variety of community fitness sessions.**

Please see the timetable below for further details.

We are thrilled to be working alongside Essex County Council to promote simple, effective workouts for everyone. As a community fitness provider, it's an honour to be involved and able to invite you all to the launch of 3030essex at county hall at midday on Monday 3rd June.

There's a website where you sign up to register and then await your instructions. Each day through June there'll be an easy to follow activity. Get involved? Make it a family affair? Get colleagues involved as a team challenge?

[www.3030essex.com](http://www.3030essex.com)

"Bring your sense of fun!"

Lindsey Abbott Shimmy'n'Groove fitness ltd  
Tel: **07886 721411**

## Broomfield Birds

**Ladies of Chelmsford, are you looking for an exciting and fun way to meet new friends and try new things?**

If so then **Broomfield Birds** is for you!

We are a group of women who meet once a month at Broomfield Village community centre. The events we have already hosted are numerous and varied from singing to flower arranging, Bollywood dancing to star gazing and wine tasting to bingo. We have even held a race night!

So if this sounds like something you'd enjoy drop us a line at [broomfieldbirds@yahoo.co.uk](mailto:broomfieldbirds@yahoo.co.uk) or visit our Facebook page.

**Looking forward to hearing from you!**



# Shimmy 'n' Groove Fitness

£5 Pay as you go! \*Family £7 or pre-booking sessions as stated!

<p><b>Shimmy'n'Groove</b> Monday - Lunch 11:00-11:30 Tuesday - Lunch 11:00-11:30 Wednesday - Lunch 11:00-11:30</p> <p><b>Shimmy Squat 'n' Strength</b> Monday - Lunch 11:00-11:30 Wednesday - Lunch 11:00-11:30 Friday - Lunch 11:30-12:00</p> <p><b>Boogie</b> Thursday - Lunch 11:00-11:30 Saturday - Lunch 11:00-11:30</p> <p><b>Shimmy Sensory Circuits</b> Monday - Lunch 11:00-11:30 Wednesday - Lunch 11:00-11:30</p> <p><b>Shimmy'n'Boogie!</b> Tuesday - Lunch 11:00-11:30 Friday - Lunch 11:00-11:30 Monday - Lunch 11:00-11:30 Wednesday - Lunch 11:00-11:30</p> <p><b>Shimmy Step</b> Saturday - Lunch 11:00-11:30</p> <p><b>Personal Training!</b> Lindsey offers bespoke wellness plans in her home gym, individual attention and nurturing towards your goals in a clean, well equipped environment in Chelmsford. Daytime and evening sessions to suit your schedule. PT Clients can attend unlimited classes for just £30 per session.</p> <p><b>Shimmy'n' Shop</b> We are pleased to stock a variety of high quality active wear, lots of colours and sizes. Stock items just £10 for £30 (special offers can be designed for you - see us weekly from £25 - £35)</p>	<p><b>Dance Inspired activities</b> Great Witham Village Hall, CM3 1TH Broomfield Village Hall, Broomfield Road, CM1 7AH Great Witham Village Hall, CM3 1TH</p> <p><b>Whole body conditioning (trail based)</b> Great Witham Village Hall, CM3 1TH Great Witham Village Hall, CM3 1TH Broomfield Village Hall, Broomfield Road, CM1 7AH</p> <p><b>Dance, Combat, HIT &amp; Stretch</b> Broomfield Village Hall, Broomfield Road, CM1 7AH Broomfield Village Hall, Broomfield Road, CM1 7AH</p> <p><b>Bodyweight exercises and agility (family friendly!)</b> Great Witham Village Hall, CM3 1TH Broomfield Village Hall, Broomfield Road, CM1 7AH</p> <p><b>Water-based class for all over conditions (6 weeks £40*)</b> Tuck in the swim lanes at Westgate School, Mersea's Way, CM2 7YH Get in the swim lanes at Haverhill School, Mersea's Way, CM2 7YH Get in the swim lanes at Haverhill School, Mersea's Way, CM2 7YH Get in the swim lanes at Haverhill School, Mersea's Way, CM2 7YH</p> <p><b>Freeze or Thaw your own! (6 weeks £30*)</b> Broomfield Village Hall, Broomfield Road, CM1 7AH</p> <p><b>5 sessions £750 when booked as a block or £25 per session</b></p> <p><b>At 200 items £30, At 10, Match Cards active wear.</b></p>
---	--

Lindsey Abbott  
07886 721411

facebook.com/ShimmynGrooveFitness

@ShimmynGroove



**BENCHMARK**  
TREE SERVICES

TREE SERVICES TAILORED  
TO YOUR REQUIREMENTS

Based in Chelmsford, with over 20 years of experience, Benchmark Tree Services are the company to call for first class tree work in Chelmsford, throughout Essex and the surrounding area.

No job is too big or too small for the talented team of tree care specialists at Benchmark Tree Services in Chelmsford. We always go the extra mile for you. If the council need to be contacted and permissions arranged, we'll take care of it.

✉ [s.whelton@btpopenworld.com](mailto:s.whelton@btpopenworld.com)  
 🌐 [www.benchmarklandscapeltd.co.uk](http://www.benchmarklandscapeltd.co.uk)

- Tree surgery
- Tree health surveys
- Air spading
- Tree and woodland planting
- Tree and woodland maintenance
- Site clearances

☎ **0808 250 7946**

GP CONSTRUCTION PLANT  
CS COMPETENCE SCHEME



**fairstead  
electrical**

Domestic • Commercial  
 New Build • Rewires  
 Extensions & additions  
 Garden lighting • Fault finding  
 Solar PV and Off Grid  
 Testing and certification  
 Fully insured • NICEIC registered

Call us on  
**07557 684723**

email [alex@fairstadelectrical.co.uk](mailto:alex@fairstadelectrical.co.uk)  
[www.fairstadelectrical.co.uk](http://www.fairstadelectrical.co.uk)

Chelmsford  
**market**

**INDOOR MARKET**  
Tuesday – Saturday

**HIGH STREET MARKET**  
Friday & Saturday

[www.chelmsford.gov.uk/market](http://www.chelmsford.gov.uk/market)  
Tel: 01245 605717

**Second hand Market – Thursday**  
[www.chelmsford.gov.uk/market](http://www.chelmsford.gov.uk/market)

Chelmsford City Council

## Village Diary

Various activities including Karate, Bingo, Bridge Club, Aerobics, Women's Institute, Carpet Bowls, slimming clubs and children's activities take place in the Broomfield Village Hall on a weekly basis - please telephone the Village Hall **01245 443902**, email [hall@broomfieldsex.co.uk](mailto:hall@broomfieldsex.co.uk) or have a look on the website <http://www.broomfieldsex.co.uk> where the village diary is also published, for more information.

### JUNE

<b>1</b>	<b>Library action group</b> The Angel, Main Road	11.00 a.m.
<b>3</b>	<b>Stay N Play</b> Broomfield Village Hall	09.15-11.15
<b>5</b>	<b>Coffee Morning</b> Broomfield Village Hall	10.00 – 12.00
	<b>Orchard Springs W.I.</b> Broomfield Village Hall	7.30p.m.
	<b>Bishops and Brothels</b> with Gary Egerton <b>Property and Planning Committee</b> Broomfield Parish Office	7.30 p.m.
<b>10</b>	<b>Stay N Play</b> Broomfield Village Hall	09.15-11.15
<b>12</b>	<b>U3A</b> Broomfield Village Hall	1.30 p.m.
	<b>Essex Scrubbers</b> – Christine Beedle <b>Village Amenities Committee meeting</b> Broomfield Parish Office	7.30 p.m.
<b>17</b>	<b>Stay N Play</b> Broomfield Village Hall	09.15-11.15
	Baby and toddler group for under 5's, parents & carers	
<b>29 -</b>	<b>Broomfield Football Club,</b>	
<b>30</b>	<b>Club Fun Weekend</b> Mill Lane	9.30 onwards

### JULY

<b>1</b>	<b>Stay N Play</b> Broomfield Village Hall	09.15-11.15
	Baby and toddler group for under 5's, parents & carers	
<b>3</b>	<b>Coffee morning with Mobile Customer Information Service</b> Broomfield Village Hall	10.00 - 12.00

<b>3</b>	<b>Orchard Springs W.I.</b> Broomfield Village Hall	7.30p.m.
	<b>Food and Drink from Around the World</b> with Philippa Croft <b>Property and Planning Committee</b> Broomfield Parish Office	7.30 p.m.
<b>8</b>	<b>Stay N Play</b> Broomfield Village Hall	09.15-11.15
	Baby and toddler group for under 5's, parents & carers	
<b>10</b>	<b>U3A</b> Broomfield Village Hall	1.30 p.m.
	<b>Boudicca and the Gold &amp; Silver Treasures</b> Village Amenities <b>Committee meeting</b> Broomfield Parish Office	7.30 p.m.
<b>14</b>	<b>Broomfield Cottage Gardeners Society</b> Broomfield Village Hall	2.00 – 4.00 p.m.
	<b>Summer Flower &amp; Produce Show</b>	
<b>15</b>	<b>Stay N Play</b> Broomfield Village Hall	09.15-11.15
	Baby and toddler group for under 5's, parents & carers	
<b>17</b>	<b>Broomfield Parish Council</b> Broomfield Village Hall	7.30 – 9.30
<b>29</b>	<b>Play in the Park</b>	10 – 12 noon

### AUGUST

<b>3-4</b>	<b>Chelmsford &amp; District</b> St John Payne School,	10.00 a.m.
	<b>Fuchsia Society</b> Patching Hall Lane	5.00 p.m.
	<b>Annual Fuchsia Display</b>	
<b>5</b>	<b>Play in the Park</b>	10 – 12 noon
<b>7</b>	<b>Coffee Morning</b> Broomfield Village Hall	10.00 – 12.00
	<b>Property and Planning Committee</b> Broomfield Parish Office	7.30 p.m.
<b>12</b>	<b>Play in the Park</b>	10 – 12 noon



## Broomfield Cricket Club

**It's a big year for cricket** with the Cricket World Cup being played in England and Wales this summer. Hopefully it will be a big year for us too with the Saturday Adult 1st XI chasing that elusive promotion from Division 3 of the T Rippon Mid Essex Cricket League and the 2nd XI looking to secure back to back promotions from Division 8.

Members have been hard at work and already the ground looks a picture. A significant amount of time and money has been invested in the relaying of the playing pitches so everything is set ready to go for the season.

Junior cricket for 9 to 15 year olds will, once more, be very much at the forefront of what we do. Training sessions will be as usual on Friday evenings from 26th April together with matches arranged throughout the summer. Why not give it a try? Please contact me for more detail.

Excel Redstone, IT specialists, will once more be

supporting the Club and their logo will feature on Club shirts (picture). Our grateful thanks are extended to them.



Interested in playing or just enjoy watching? You're more than welcome. Let's hope it is a big year for England and Broomfield!

**Tony Cowell**

Chairman

[tony.cowell1@btinternet.com](mailto:tony.cowell1@btinternet.com)



Mill Lane, Broomfield, CM1 7BQ

# BROOMFIELD FC

## 5 - A - SIDE FUNDAY

### Entry Fee £35

( £25 for additional teams within same age group )

**Saturday 29th June 2019**  
U11's → U15's  
Maximum 7 players per team

**Sunday 30th June 2019**  
U7's → U10's  
Maximum 10 players per team  
**PLUS Men's Open Tournament**  
Maximum 7 players per team

Contact  
Dian Dunbar → 07788268327  
Samantha Jeeves → 07500932600  
E-Mail → [b@clubmatters.co.uk](mailto:b@clubmatters.co.uk)  
Enquires can be made → <http://www.broomfieldfc.com>

## Broomfield Hospital Open Gardens 29 June 2019



10:00am –  
12:30pm  
Tours:  
approximately 45  
minutes

**Come and explore the grounds and gardens of Broomfield Hospital**  
Guided tours by the hospital's sustainability and grounds team

From dementia gardens to woodlands and ponds, you will be surprised to see what we have to offer. Refreshments available

Book on to let us know you are coming:  
[broomfieldhospitalopengardens.eventbrite.co.uk](http://broomfieldhospitalopengardens.eventbrite.co.uk)

## Broomfield Football & Social Club

**With the football season not too badly impacted by weather so far this year, March & April have been busy and exciting months at Broomfield FC.** Starting with the Girls Section, they reached some important milestones, first of which was the two year anniversary since inception by our Football Development Officer, Lee Sterland with vital support from our friends at Essex FA. At the beginning of April we also received confirmation that we were awarded official FA status of an SSE Wildcats Centre for Girls Football (see advert), which means that any girls looking to participate in football locally will be directed via the Wildcats website to contact Broomfield FC along with other local Wildcats Centres. As well as a rapidly growing girls section with players aged from U7s to U12, BFC have also commenced a ladies training session on Saturday mornings with a view to forming a team.

The club also hosted a Girls Easter Football Camp run by Professional Player Amber Stobbs' coaching company, Equal Focus Football which was well attended by over 40 girls (see picture).

### Girl's Easter Football Camp

The other notable success was the Girls Section also receiving its own standalone FA Charter Standard accreditation (as well as maintaining the existing accreditation for Boys/Men's Football), recognising the investment made in Coach Education, First Aid and Safeguarding of young players.

To celebrate such a successful season, the Girl's Section Head Coach, Paul Goss took 60+ players, parents and Supporters to the SSE FA Cup Final at Wembley between West Ham United and Manchester City on 4th May 2019. There have also been many other successes outside of the Girl's Section, including the following:

- The U18 Lions reaching the B&D League Division 1 Cup Final at Witham FC, sadly they were beaten on penalties by Hatfield Peverel.
- The Sunday first team reached the Pope & Smith League Cup Final held at Heybridge Swifts FC, unfortunately losing 2-0 to South Woodham Ferrers.
- The Over 45 "Super Vets" WON their League



Cup Final against Ford Basildon at Aveley FC in March, which saw the match go to extra time. Two of our "Super Vets" team have been selected to represent England Super Vets at a match in the USA during April – we are very proud of both Paul Spencer and Ian Bishop for this huge achievement.

- The U16 Fire team have reached not one but two Cup Finals for their League, the first one is the CYFL Southend & Chelmsford Premier Cup against Hutton FC on Tuesday 30th April AND a League Cup Final against Harold Wood Cougars at Aveley FC in May.
- U16 Flame Black are also through to a Cup Semi Final and also stand a good chance of winning the league and reaching a Cup Final in CYFL Division 1.

We are always looking for new volunteers to become football coaches for both new and established teams (Girls and Boys), so if this is something that interests you and would like to find out more please contact Andy Sears on **07468 493690**.

At the time of writing, we are looking forward to another massive anniversary for the Club in May as it is the 40th German Exchange, when young Broomfield FC players, parents and supporters will visit SV Sparta Werlte in Northern Germany during Whitsun Week. The exchange programme is part of Broomfield Football Club's DNA and a highlight every year for all associated with the Club and our German Friends.

The 29th & 30th June is Broomfield FC's annual Fun Weekend where we welcome well over 100 teams from across Essex at all age groups to play 5 a side football along with lots of traditional fun for all the family. We welcome all local residents to come and be part of the Fun Weekend.

We continue to hold a Monthly Prize Lottery which is drawn on the last Sunday of each month. Tickets are £5.00 and payable via a Standing Order or alternatively if you don't want to make an ongoing commitment tickets can be purchased from our bar on the weekend leading up to draw. Two thirds of the lottery revenue is prize money, leading to a cash first prize of between £320 and £500 and a smaller

Runners Up Cash Prize. If you'd like to be part of this Prize Draw (open to everyone) please contact Carolyn Stone on **07940 910141**

The Club also now operates a "Boot Store" which is based on the resale of outgrown good condition donated boots, providing an affordable solution to families with quick growing feet, at only £8.00 a pair. The Boot Store also sells donated Shin Pads, and also more recently Football Kits including Premier League teams, La Liga /Champions League team kits which have been outgrown (see enclosed adverts). We would welcome all donations of good condition (and clean) boots and used Football Kit to our Boot Store Co-ordinator, Lesley Temple. All donations can be left at the bar in our clubhouse any weekend. The Store is open for business most Saturday mornings but if you have a particular size you are looking for please give Lesley a call on **07794 541821**. We also have a Club Shop that stocks a range of BFC Supporters Beanie Hats, Scarves, Thermo Mugs and Bags.



Our Clubroom Facilities are available for Mid-Week Day Hires from 9 am Monday to Friday, and we offer competitive rates to local community groups looking for a venue to provide classes. We already host "Team Up Dog Training" who provide Puppy, Intermediate and Advanced Classes between 18:30 and 20:45 on Tuesday evenings. Private Hire details can be found at [www.broomfieldfc.com](http://www.broomfieldfc.com).

**Stuart Paterson**

## St Mary's with St Leonard's Church



**Rev'd Carolyn Tibbott will be taking extended study leave from the beginning of May until the end of August.** During that time the Church Wardens and the clergy team, Rev'd Julie Hardy, Rev'd Anne Harvey and Rev'd Diana Garfield will continue to ensure that St Mary with St Leonard's Church continues to run smoothly.

If you have taken a walk up the churchyard recently you will have seen that the East side of the new extension has been cleared, and planted with grass seed. We had to do more work, more quickly, than we had first intended due to the pressure on burial space in the present grave yard and the cost of the works which would have been much more had we undertaken the work in stages. However, the PCC are pleased with the work and we had positive comments from our neighbours who used to use that land as extensions to their

gardens. The area is now safe and secured, we have now applied for a faculty to move the remaining fencing and to have the land consecrated for burials, providing a final resting place for those who live in Broomfield.

No two days are the same at the Church. We have a variety of clubs going on during the daytime and during the evening - Film and Lunch Club, Little Lambs, Lunch & Laughter, a Beetle Drive, a Men's group and a Ladies group, as well as, concerts, talks and special events at the weekend. Sunday Worship takes place at 8am, 10.30am and 5.30pm, as well as a weekly service at 9.30am on Thursday (term time only) and monthly on the 2nd Wednesday in the month. There is something for everyone! Over the coming summer months we will be holding some events outside, weather permitting, and will move them indoors if the weather is inclement.

## Dates for your diary :

2 June	<b>Family Service</b>	10.30am	Suitable for all ages
9 June	<b>Sunday Special</b>	3-4pm	Craft, story, film clip/puppets, and food – fun for all the family held in the hall
12 June	<b>Midweek Eucharist</b>	10am	
	<b>Coffee morning in the hall</b>	10.30am	money raised at this is donated to Little Havens Hospice
16 June	<b>Concert</b>	3pm	Tickets cost £5 available on the door
23 June	<b>Songs of Praise on the Green</b> at 5.30pm followed by Strawberry Tea – Do you have a favourite hymn or Bible verse? If so, email <a href="mailto:revjuliehardy@btinternet.com">revjuliehardy@btinternet.com</a> and she will try to include it within the service.		
2 July	<b>Family Service</b>	10.30am - suitable for all ages	
10 July	<b>Midweek Eucharist</b>	10am	
	<b>Coffee morning in the hall</b>	10.30am	money raised at this is donated to Little Havens Hospice
14 July	<b>Pet Service on the Green</b>	3pm	bring your pets (great and small) along, or bring a photo of your pet suitable for all ages
4 August	<b>Family Service</b>	10.30am	
14 August	<b>Midweek Eucharist</b>	10am	
	<b>Coffee morning in the hall</b>	10.30am	money raised at this is donated to Little Havens Hospice
1 Sept.	<b>Family Service</b>	10.30am - suitable for all ages	

Please look at our website [www.stmarybroomfield.org](http://www.stmarybroomfield.org) for more information and our Facebook page St. Mary Broomfield or contact Rev'd Julie Hardy on **01245 443565** for more information.

**Rev'd Julie Hardy**

## MAKE YOUR WILL !

...IN THE COMFORT OF  
YOUR OWN HOME...

*Do you and your family have the peace of mind of an up-to-date Will, or a Power of Attorney for yourself or your parents, or Legal Guardians for your children under 18 ?*

My professional Will Writing and Power of Attorney services are offered **7 days a week** on a **fixed fee** basis **in your own home**, regardless of consultation time and number of visits



**MARTIN ENGLEMAN**

AIPW AFPC DipPFS Certs CII (MP & ER)

Qualified Member of the Institute of Professional Will Writers

*Please visit [www.businessadvisoressex.co.uk/](http://www.businessadvisoressex.co.uk/) for information on Wills or Powers of Attorney, then call for a fixed fee quotation and free advice*



**01268 761022 / 07901 948745**

1 Nesbit Close Wickford Essex SS12 0PT

**ENGLEMAN WILLS & POWERS OF ATTORNEY**

## Your Security is Our Priority

Extensive range of domestic and commercial security systems in Chelmsford, Essex

## Thorndon Security Ltd

We pride ourselves on our workmanship and being able to meet the needs of our clients

Intruder Alarms  
Fire Alarms  
Access Control  
CCTV Systems

**01245 475476**

*email [thorndonalarms@aol.com](mailto:thorndonalarms@aol.com)*



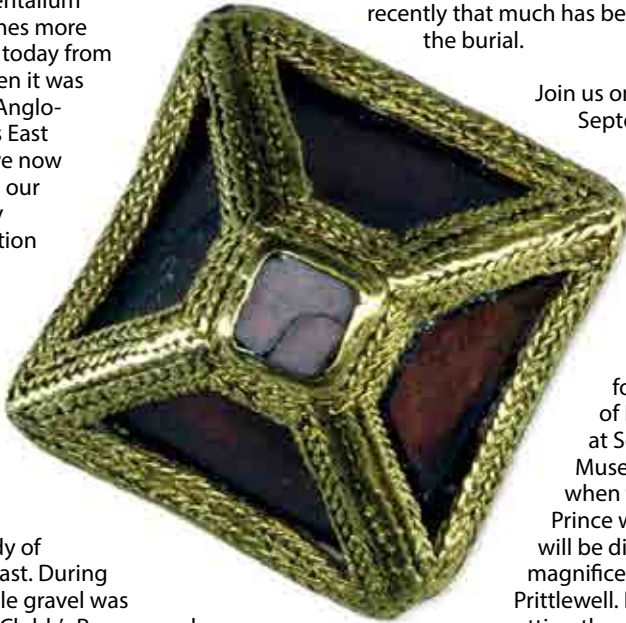
**[www.thorndonsecurity.com](http://www.thorndonsecurity.com)**

## Broomfield in Anglo Saxon Times

**The past, whether we realise it or not, is all around us in many forms - old buildings, ancient hedgerows and trees, even the route of our busy Main Road.**

On a daily basis we probably all refer to the distant past through the use of place-names without a second thought. Broomfield was first recorded as Brumfelda in the Domesday Book (1086) and I expect this name goes back a century or two before that. Our county name is probably even older. The venerable Bede referred to it in around the year 730AD as Orientalium Saxonum. It becomes more recognisable to us today from around 900AD when it was mentioned in the Anglo-Saxon Chronicle as East Seaxe. Of course we now know it as Essex as our part of the country once formed a section of the kingdom of the East Saxons.

Possibly the most famous Anglo Saxon burial was that found at Sutton Hoo in Suffolk but Broomfield is also special for the study of our Anglo Saxon past. During the late 1880s, while gravel was being dug near to Clobb's Row, an early seventh century princely Saxon burial was uncovered. From it many artefacts were uncovered among which were two blue glass beakers, a gold & gilt silver buckle-tongue with garnets and a gold sword-harness pyramid with garnets and gold foil. This latter object might be familiar as it has been adopted as a symbol by our Parish Council (see accompanying image). The finds were deposited at the British Museum where some are important enough to be on display.



The problem with the burial being discovered towards the end of Queen Victoria's reign was that archaeological techniques were not as advanced as they have become today. However, we are fortunate that in 2003 at Prittlewell, Southend, an undisturbed Anglo Saxon princely burial was found during road widening. Archaeologists excavated it carefully over a period of 10 days and more than 100 objects were recovered. The post-excavation conservation, evaluation and interpretation of any archaeological finds take many years, more so with such an important site, and it is only recently that much has been published on the burial.

Join us on Saturday 28 September at 2pm at the church of Broomfield St Mary for the fourth in a series of talks exploring our past when Ken Crowe, former Curator of Human History at Southend Museum and on duty when the Prittlewell Prince was discovered, will be discussing the magnificent finds from Prittlewell. Ken will be putting them into context with the finds from Broomfield and talking about Saxon Essex.

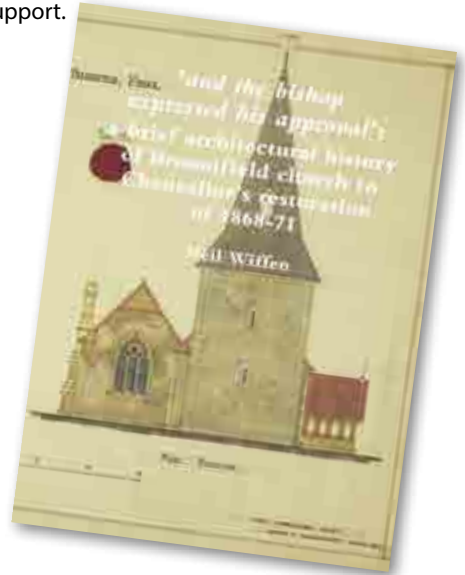
Tickets cost £5 and must be reserved in advance from [trudy\\_stevens@outlook.com](mailto:trudy_stevens@outlook.com), or 01245 359079. Refreshments will be served for a donation and a raffle will be held. All funds collected will go to the re-shingling of the spire. This is bound to be an interesting and popular talk so be sure to book your ticket as soon as possible!

**Neil Wiffen**

## A brief architectural history of Broomfield Church

**The parish church is usually the most significant building in our village, often with origins stretching back to the Normans or even the Saxons.** Over the centuries those charged with their care have had to struggle to keep the wind, rain and frost from destroying their fabric, and this upkeep continues through to our own day. The long history of St Mary with St Leonard, Broomfield, is no exception and currently it needs to have its spire re-shingled at a cost of around £100,000. To help raise funds for this latest round of repairs a series of talks, with associated publications, has been started. The first, by local historian Neil Wiffen, charts the interesting architectural history of the church from shortly after the battle of Hastings to the reign of Queen Victoria. Many of the past incumbents and parishioners are mentioned in this fascinating story. Available in person for only £7.50 from the church, all proceeds will go towards the spire fund. For postal orders,

a cheque for £10 (which includes p&p) made payable to 'St Mary's Broomfield PCC' should be sent to Dr.T. Stevens, 248, Broomfield Rd., Chelmsford, CM1 4DY. We look forward to your support.



## Library

**The Easter holidays saw children from the area come and do a Bear Hunt through Broomfield Library.**



The children were given a map to follow and went through the different obstacles from the book 'We're Going on a Bear Hunt'. Successful hunters were rewarded with a certificate and a prize, and were also able to make their own binoculars and bears to take home.

We also held a garden-themed event for May half term, which involved sticky fun with bugs and seeds.

As the warmer weather approaches, we start to turn our thoughts and plans to the Summer Reading Challenge here at the library. This year will be 'Space Chase', and more details about the characters will be shared with the children during their Summer terms at school.

Our Book Bingo for all ages is going strong. We have seen some lines completed already, but new cards and details are available from the library.

**Michelle Davis**

## St.Mary's Church Spire – Fundraiser

### The Way of Saint James – Part Three

**Finished in style, as I and others entered the Plaza do Obradoiro by the Cathedral** in Santiago de Compostela a Galician Piper struck up - not quite "Scotland the Brave" but it would do at the end of our walk across northern Spain.

I and many others had walked the final 120 kilometres of the Way of St.James/Camino de Santiago. Indeed many had walked the entire length of the Camino, 778.5 kilometres; I met a Californian who had walked for 32 days and whose wife told him to burn his clothes, have a bath and buy some new clothes before he came home *(hopefully not in that order).*





I joined the other Pilgrims in the square, sitting down, lying down, even jumping up and down; all pleased to have completed the journey. As I may have mentioned before Galicia is green, on account of its rainfall, and it had rained. In the past a Pilgrim's uniform was a trusty staff and cloak. In the 21st century a Pilgrim's choice is a strong poncho - it covers you, your pack and almost keeps trouser bottoms dry....

We had walked along country lanes past stone-built houses, farms and churches. Along heavily wooded (and muddy) tracks, over fast flowing streams occasionally with bridges or stepping stones. Past ancient Celtic settlements and Roman encampments. Uphill and down dale and I mean UP! Alongside major roads, across an unfinished motorway, past TV studios and an international airport.

Our journey was not entirely damp, in fact whilst it rained most days only one day was wall-to-wall torrential rain and one was wall-to-wall sunshine (the last!). Whatever our reasons for undertaking the Pilgrimage I know we had all gained something be it a spiritual uplift, an inner peace, a time for reflection or just time out from the daily travail. As suspected I was never alone the nearer I was to Santiago the more crowded the Way became. There were groups of school children, families and even a large Spanish coach party who walked a few miles had a coffee and then jumped into their red coaches and drove on a little further!

The last steep climb was to the top of Monte del Gozo, the Mount of Joy, from here we Pilgrims gained our first sight of the four towers of Santiago's cathedral in the distance - journey's end. Originally a substantial peak it had been levelled out to form a site for the Mass celebrated by Pope John Paul upon his visit to Santiago in 1989. The hill is surmounted by two bronze pilgrims expressing their joy at nearing the end of their journey. Just below the summit is a pilgrim hostel built by the Poles on that occasion; it can accommodate 1,500 and looks like a cross between a barracks and a holiday camp. If you arrive late in the day you can stay here for free, upon production of your Credencial - exactly

as happened centuries ago upon production of your letter of authority/credential. From here, following the directions of the 'bronze pilgrims' our path is now downward towards the outskirts of Santiago itself. So far we have been following concrete plinths with yellow arrows or scallop shells on a blue ground pointing our way westward. As we reach Santiago the signage changes to bronze scallops let into the pavement and yellow arrows on the street furniture. After walking through the countryside it seems strange to be walking through a city. Suddenly we reach, what had been the original city wall & gates, the Porta do Camino and onward to the Praza da Inmaculada - where the original pilgrims washed in the fountain (now in the Cathedral Museum) before entering the Cathedral. Then through the archway, down the steps past the Piper and into Praza do Obradoiro.

As we have walked we have been required to get our "pilgrim passport" ( the Credencial issued by the Cathedral authorities) stamped at least twice a day as we complete the final 100 Kms. This is our proof that we have walked all the way. These stamps are acquired at churches, pilgrim hostels, bars and a variety of other establishments along the way (including the odd charlatan who will demand "una donativo" i.e. charge for the privilege). Upon arrival this Credencial is presented to the Cathedral's Pilgrim Office who, once they have verified the full complement of correct stamps, will provide the final stamp and issue a Compestela to the Pilgrim undertaking the journey for a spiritual or religious purpose. Originally the 12th century pilgrim, having completed a journey with greater dangers than those I faced, upon receipt of the Compestela knew that if he survived the journey home he was promised a reduction of his time in Purgatory upon death. If he died enroute he was guaranteed to bypass Purgatory altogether.

Not all those who undertake the Walk apply for a Compostela so it is difficult to assess how many arrive per day. All I can say for sure is that on the day of my arrival in the city 926 Pilgrims applied for a Compostela.

The other symbol of completion of the

journey is the acquisition of a scallop shell to prove he had reached the end of his journey, the beaches are covered in them. Today, however, many pilgrims carry their scallop shell with them.

The Pilgrim's final act is to attend the noon Pilgrim's Mass. This typically takes place in the Cathedral, where the massive Botafumeiro censor is swung to purify the air (originally pilgrims stayed in the Cathedral overnight, so there was a real purpose to cleanse the air from the stench of thousands of unwashed pilgrims). However, as the Cathedral is currently being renovated/refurbished for the next Holy Year in 2021 (when St. James Day - 21st July - falls on a Sunday) the service was held in the nearby Church of St. Francis, which apparently is larger than the Cathedral. On the day I attended Pilgrims were welcomed from UK, Germany, Australia, Spain, USA, France and Italy.

I have completed my journey but the journey to raise sufficient funds repair the fabric of the Tower & Spire of our village church of St. Mary's is not over. There are several ways that you can

contribute to assist in this project. My website at [Justgiving.com/macscamino](http://Justgiving.com/macscamino) will remain open until the end of May. You can contact me at [walkingmac49@gmail.com](mailto:walkingmac49@gmail.com) or you can send a cheque, made out to St. Marys PCC c/o Rev. Carolyn Tibbott at The Vicarage, 10 Butlers Close, Broomfield. My thanks to all those who have already contributed and enabled me to raise £1,500 towards the Tower Fund.

**Malcolm Taylor**



**THINKING OF A NEW LOOK?**

VISIT OUR NEW SHOWROOM FOR INSPIRATION & ADVICE.  
PAINT MIXING AVAILABLE ON SITE

For 5% discount on your paint order when placed instore quote code "Broomfield5" when ordering

**CHANDLER**  
www.chandlermaterials.co.uk

**01245 352650**  
91 Widford Rd, Chelmsford, CM2 8SY  
Suppliers of quality building materials to the trade & public

**BUILT FOR RESISTANCE NOW**  
**BMN awards 2017 WINNER**

**INDEPENDENT BUILDERS MERCHANT OF THE YEAR**

# CHILLS BODYWORKS

ACCIDENT & REPAIR SPECIALIST

We can repair and respray cars of all makes and models!

Using the latest garage equipment and techniques, we offer a swift and cost-effective car body repair service.



## Why choose us?

- Reputable car body shop •
- Combined experience of 120 years •
- Fully insured work •
- Free Quotes and advice •



If you do have any questions please do not hesitate to contact us:

Tel: 01279 876 673 • Email: [chill@chillsbodyworks.com](mailto:chill@chillsbodyworks.com) • [www.chillsbodyworks.com](http://www.chillsbodyworks.com)

## The Leather Bottle



Grade II-listed village pub with two rooms

- Perfect for children • Outdoor seating •
- Walk-ins welcome •
- Street parking available •
- Homecooked food served from 12 till 3pm •
- 3 changing cask ales •

• 1st Friday of every month Folk Night from 8:30pm • Last Monday of every month quiz night from 7:30pm •  
Traditional cask ales (CAMRA recommended) • August Bank Holiday weekend Sunday 26th live entertainment from 4pm & Bank Holiday Monday live entertainment from 3pm with BBQ and Hog roast •



The Leather Bottle Pleshey

The Street, Cm3 1HG • 01245 237291



T: 01245 492 494  
E: [enquiries@garrodslaw.com](mailto:enquiries@garrodslaw.com)

**Garrods Law** YOUR LOCAL SOLICITORS

We are pleased to welcome **Emma Reid** to our team who has over 17 years experience in dealing with family matters.

*We look forward to hearing from you.*

**1st Floor, Broomfield Place, 189 Main Road,  
Chelmsford, Essex CM1 7EQ**

**10% discount on our fees with  
production of this advertisement**

Accredited to Law Society:  
Children Law Accreditation Scheme

Authorised and Regulated by:

The Solicitors Regulation Authority no. 617997

Director: Anita Garrod, Solicitor-Advocate  
(Higher Courts Civil Proceedings)

[www.garrodslaw.com](http://www.garrodslaw.com)



# Twilight Bat Walks At Broomfield Hospital

Experience a unique wildlife walk, back at Broomfield Hospital for 2019! Bats are emerging from hibernation and as the weather warms it offers an opportunity to see these fascinating mammals in their natural habitat.

Supported by the Essex Bat Group and Heart & Sole, join us with friends and family to experience our hospital bat activity & roost!



**The Bat Walk Dates**  
12<sup>th</sup> July, starts 8:45pm  
26<sup>th</sup> July, starts 8:25pm  
16<sup>th</sup> August, starts 7:45pm  
6<sup>th</sup> September, starts 7:00pm



Noctule – ©R E Stebbings

**Meeting point:  
Broomfield Court**

(Map available on booking)



Pipistrelle – ©Hugh Clark

Last year we saw Soprano & Common Pipistrelles, what will you find?

All equipment provided. Spaces are limited on a first come, first serve basis.

**DON'T MISS IT! OPEN TO ALL**



Please contact us on 01245 514558 or email to book a place; [sustainable.development@meht.nhs.uk](mailto:sustainable.development@meht.nhs.uk)

We Offer a totally unique bespoke furniture solution for your home

**SUMMER SALE STARTS MONDAY 1<sup>st</sup> JULY**



**BRINGING YOUR IDEAS TO LIFE, FROM CLASSIC TO CONTEMPORARY**



6 Suffolk Drive, Dukes Park Ind Est, Chelmsford CM2 6UN | 01245 450259

info@priestbrothers.co.uk | www.priestbrothers.co.uk | priestbros | Priest.Brothers.Furniture



**Rp Construction**

Complete Design & Build Management

We are a local Construction Company Providing:

- **Driveways**
- **Patios**
- **Block Paving etc**



Free no obligation quotations to Essex and surrounding areas



Friendly Staff



Reliable



Skilled



Recommended

Tel: **01245 472511**

Email: [info@resinbound-driveways.co.uk](mailto:info@resinbound-driveways.co.uk)

Website: [www.resinbound-driveways.co.uk](http://www.resinbound-driveways.co.uk)

# ADAM & GREENWOOD FUNERAL DIRECTORS



## Dying Matters....



*Rely on our experience and expertise  
and talk to us today.*

**Burials | Cremations | Ashes  
Burials | Pre-paid Funeral Plans  
Monumental Masons**

**'Let our family care for yours'**

*Available 24 hours a day.*

01245 496620 01621 857172 01277 633085  
Chelmsford Maldon Billericay

[www.afuneral.co.uk](http://www.afuneral.co.uk)

*Owners of Herongate Wood  
Woodland Cemetery 01277 811064*



Beat the Beacons Challenge

- Win the 2019 Prize
- All our tough jobs are being put to rest
- Good time
- Supporting a fantastic cause

Interested?

Register to secure your place and raise money for the British Red Cross in Essex.

Call **01245 291014**

Email [janicegilroy@redcross.org.uk](mailto:janicegilroy@redcross.org.uk)

Website [redcross.org.uk/beatthebeacons](http://redcross.org.uk/beatthebeacons)

Registered in 2006. Our charity is a company limited by guarantee and a company registered in England and Wales. Registered office: 100, The Green, Chelmsford, Essex, CM1 1LQ. Registered in England and Wales. Charity No. 1090201. Registered in England and Wales. Charity No. 1090201.



The power of kindness

## 100TH BIRTHDAY IN 2019 Prestons Garages

100TH BIRTHDAY IN 2019



A familiar and popular name in the area, Prestons has firmly established itself, with 100 years of business as of 2019, as one of the leading independent motor dealers located in the Chelmsford area.

Skoda aftersales dealership, dealing with your aftersales needs, service, MOT and repairs.



**Preston Garages Skoda Sales & Filling Station**  
2-4 Lordship Road,  
Writtle CM1 3EH  
Tel: 01245 420262

[www.prestonsgarages.co.uk](http://www.prestonsgarages.co.uk)

## RS // SCUFF 'N' BUFF

Put your car in our care for its 1 day repair

Professional quality cosmetic car repairs, specialising in repairing everyday paint and bodywork damage.



DENTS



VANDAL SCRATCHES



PAINTWORK SCRATCHES



BUMPER SCUFF

We don't deal with major crash repairs, therefore we don't have the expensive overheads a traditional bodyshop might have.

We pass these savings on to our customers.

By using the SMART approach we are able to provide a same day, quality cosmetic solution for the damaged area.

Pop in for a **FREE** no obligation estimate or call  
01245 463183 / 07799 711531



[www.rsscuffnbuff.co.uk](http://www.rsscuffnbuff.co.uk)

[rob.slade@rsscuffnbuff.co.uk](mailto:rob.slade@rsscuffnbuff.co.uk)



17 Oyster Place, Montrose Road, Chelmsford CM2 6TX

## COOPER KEYS CUTTING EDGE

- Keys cut to pattern, number
- Locks supplied
- Car keys / Remote Programming
- Classic car key and lock specialists
- DIY • Tools • Hardware • Decorating
- Electrical • Gardening

01245 251399

[cooperkeys@live.co.uk](mailto:cooperkeys@live.co.uk)



5 The Parade Woodhall Road, Chelmsford, Essex CM1 4BA





**Bardfield**  
Design & Build



Your reliable builder for all residential building requirements. Our highly experienced team of professional tradesmen always produces the best quality work and offers excellent customer service. We will take your project from inception through to completion and you will be thrilled with the finished product.

- Renovations • Extensions • New Builds • Garage Conversions
- Annexes • Garages • Car Ports • Brickwork • Joinery • Roofing
- Plastering • Plumbing • Electrical • Kitchens • Bathrooms
- Groundworks • Hard Landscaping • Project Management



01371 450272 • office@bardfieldbuild.co.uk  
www.bardfieldbuild.co.uk



# GUARANTEED PART WORN & NEW TYRES



**PART WORN TYRES**



**NEW TYRES**



**TRACKING**



**CAR TYRES**



**CROSSOVER TYRES**



**4x4 TYRES**



**VAN TYRES**




**PUNCTURE AND DAMAGE  
TYRES REPAIR SPECIALIST**

For details of our **LIFETIME  
GUARANTEE** on part-worn tyres visit:

[www.tyresaversukltd.co.uk](http://www.tyresaversukltd.co.uk)

Unit 4 Navigation Road, Chelmsford CM2 6HE  
Call: 01245 252 626

143 London Rd, Stanford Rivers, Ongar CM5 9PP  
Call: 01277 365 420

 Visit us on Facebook



# BAYCROFT

Care Homes & Senior Villages



 64 BEDS

 RESIDENTIAL CARE

 NURSING CARE

 DEMENTIA CARE

## LUXURY CARE IN GREAT BADDOW

Baycroft Great Baddow is our second luxury care home, providing expert 24-hour residential, nursing and dementia care.

We are creating homes that feel like home, where you can truly feel at ease. As much thought has been invested into the dining experience, the engaging social activities, the innovative technologies and the high quality facilities as the exemplary standards of care. These elements combined create the comfortable and fulfilling lifestyle you deserve.

**We are dedicated to making a better every day for you and aligning our care and services to your needs.**

MOLRAMS LANE, GREAT BADDOW, ESSEX CM2 7TL

 020 8821 2018

 info@baycroft.co.uk

 baycroft.co.uk

