

Broomfield **TIMES**

Issue 57 | Spring 2019

News & events from your Parish Council





EAT . DRINK . CELEBRATE



SUNDAY LUNCH?

Two Courses:
£19.95

Three Courses:
£22.95

*Includes coffee/tea
and chocolates*

Our Sunday Lunch Menu includes traditional home cooked roasts such as Roast Scotch Sirloin of Beef, Rack of Pork and Chicken Breast, each served with all the trimmings!

To book your table call: **01245 440 005**

www.channelsestate.co.uk

- . *Fresh homemade dishes*
- . *Locally sourced ingredients*
- . *Beautiful restaurant views*



Channels, Pratts Farm Lane East
Little Waltham, Chelmsford CM3 3PT



CHANNELS

— *Bar & Brasserie* —

Broomfield TIMES

In this issue we report on two new initiatives that residents can get involved in over the coming months. One is a project to consider various uses for the land south of Broomfield Place. There will be a consultation event in May and you can read more details on page 10.

We are also hoping to launch Broomfield in Bloom this Spring to enhance the appearance of the village. The details of this are still to be decided but do get in touch if you have any ideas or would like to contribute in some way.

Local Elections will be taking place on 2nd May including those for the Parish Council. You can find out more on page 16 but any of the Councillors or the Parish Clerk will be able to help if you are thinking of standing and need more information.

Selina Matthews

Bluebells at Daffy Wood taken by Barrie Hay.

**TO ADVERTISE
PLEASE CALL
01843 269513**

Published by
Community Ad Web Ltd
01843 834160

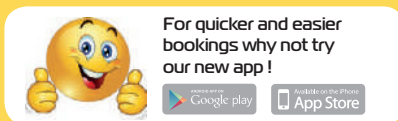
email info@communityad.co.uk
web www.communityad.co.uk



The views expressed in any published content are solely those of the contributors. The Publishers accept no responsibility for the accuracy of any information contained in the publication. The contents of this magazine including images may not be copied, reproduced, distributed, downloaded or displayed in any form or by any means without the prior written permission of Community Ad Web Ltd. Unless otherwise specified, the authors of the literary and artistic works in the pages in this magazine have asserted their moral right pursuant to Section 77 of the Copyright Designs and Patents Act 1988 to be identified as the author of those works. The Publishers reserve the right not to publish a submission or part of a submission that they consider defamatory or otherwise inappropriate for publication. CommunityAd wishes to advise all readers that it does not endorse or recommend any products or services contained herein. CommunityAd does not, therefore, take any legal responsibility for the advice given by any of the advertisers.



We pride ourselves on our professional,
friendly and reliable taxi service
24 hours a day, 7 days a week



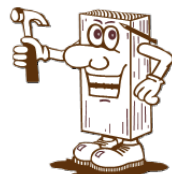
www.farewaytaxisltd.com

JP Carpenter & Joiner

I am a qualified Carpenter and Joiner
with 35+ years' experience.

I am a member of the Guild of Master
Craftsmen and am competent in every
aspect of carpentry and joinery, from
structural work such as hand cut roofs,
building extensions and loft conversions
to making bespoke pieces of furniture.

J.P. Egleton
T: 01245 442739
M: 07788 784211



Bounderby Grove, Chelmsford, CM1 4XN

Broomfield Contacts

Parish Councillors

John Barnes *Chairman*

Ros Mercer *Vice Chairman*

John Blake *Planning Committee*

Trevor Jones *Finance & General Purposes,
Village Hall Charity*

**David Howell | Angela Thomson | Sue Hubble
Wendy Daden | Geof Garwood | Selina
Matthews | Karen Fletcher | Les Steed | Angela
Faulds**

Mike Letch *Clerk*

Karen Hurrell *Assistant Cleck (Planning)*

Wendy Martin *Assistant Clerk (Village
Amenities)*

Parish Office, 158 Main Road, Broomfield, CM1
7AH

☎ 01245 441660

✉ clerk@broomfieldessex.co.uk

*Parish Councillors can be contacted through
the Parish Office Mon, Weds & Fri 10.30am -
12.30pm (answer machine available out of office
hours)*

City Councillors

Barry Knight ☎ 01245 420045

✉ gbr.knight@chelmsford.gov.uk

Sandra Pontin ☎ 01245 440447

✉ sandra.pontin@chelmsford.gov.uk

James Raven ☎ 07889 650339

✉ james.raven@chelmsford.gov.uk

County Councillors

John Aldridge 33 East View, Writtle, CM1 3NN

☎ 01245 421524

✉ cllr.john.aldridge@essex.gov.uk

MP

Kemi Badenoch, Conservative

www.kemibadenoch.org.uk

Many problems can be dealt with over the phone or by email. Due to the size of the constituency, the next surgery appointment may not be at a convenient location. If you have an urgent issue, or do not need a face-to-face appointment please contact my office immediately so we can start working on your case as soon as possible.

To book a private surgery appointment, please ring my office on **020 7219 1943** or visit my website where you can request one electronically.

Police

Contact for PCSOs:

Non-emergency number 101

Or via website www.essex.police.uk

Editorial Committee

Cllr. Selina Matthews *Editor*

Cllr. John Barnes

Cllr. Daden

Cllr. Mercer

Whilst Broomfield Times is supported by the Broomfield Parish Council, the views expressed within it are not necessarily those of the council. Please note that the Parish Council do not recommend or vet advertisers.

Contributions

Contributions to future editions are welcome, please email:

selina.matthews@tiscali.co.uk

or send a hard copy to:

The Editor c/o

The Parish Office

158 Main Road

Broomfield, CM1 7AH

☎ 01245 441660

Articles accompanied by photographs are particularly welcome. Please send either professional prints or email full-size JPG files.

Copy Dates

- Copy for the Spring issue to be sent by 19th April.

General Notes

- Free dog waste bags, graffiti removal kits plus further supplies of plastic bottle bags and cardboard and paper sacks are available from the Parish Office.
- Please refer any play area problems or incidents to the Parish Office.

Need a gardener?

**Honest • Reliable • Affordable
Qualified • Insured**

Please do not hesitate to get in touch for a no obligation, free quotation or to learn more about our business and the array of services we provide.



7 years' experience in gardens big & small

University-level education

General tidy-ups and gardening tasks

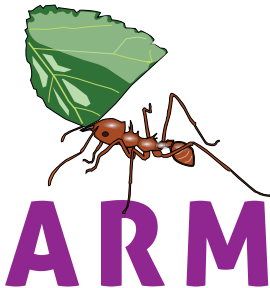
Specialist lawn care/treatment

Hedge cutting and fruit tree pruning

Clearance & plant bed renovation/improvements

Planting plans and trade-price purchasing

All seasons management plans



Anthony Martin

07821 133 413

anthony.r.martin@hotmail.com

GARDENINGSERVICES



Your Council

Council Members

The Parish Council last met on 19 December and opened with the good news that Angela Faulds was to be co-opted to join the Council. We are delighted to have Angela on board.

Local elections for both the Parish and City Councils will take place this May. You can read more about the main functions and responsibilities for each of them on page 16. If you are interested in standing for the Parish Council please contact the Parish Clerk.

Precept

The major decision made that evening was to approve the budget for 2019/20. In total we agreed a precept of £131,014 which represents an unchanged amount of £55.46 per household. The basic charge was held unchanged because the increasing number of homes in the village gives us sufficient increased income to cover the next year's requirements.

Defibrillator

We agreed earlier last year to purchase a defibrillator to be fixed to the outside of the Village Hall. The purchase had been delayed while we tried to obtain a grant to fund the purchase. Despite valiant efforts by our Clerk, Mike Letch, the search proved fruitless so Council agreed to proceed with the purchase from our own funds. Hopefully installation will be completed soon.

Broomfield Place

What might happen to the land behind Broomfield Place and the future of the library remain big questions. The Council has no influence over either decision which rest with Essex County Council but we are talking to Essex through our County Councillor John Aldridge about what options there might be to give the village some involvement in the future of both properties. With Broomfield Place in particular I am grateful to Councillor Wendy Daden who has agreed to Chair a working group to look at options and to continue to develop ideas with Essex. Councillors John Blake, Sue Hubble and Angela Faulds have all agreed to support Wendy.

Village Amenities

Finally I am pleased to report that Councillor Sue Hubble has agreed to take over as Chair of the Village Amenities Committee. The committee are looking at a busy Spring while they finalise the details for purchasing a small vehicle for the Village Attendant with a final proposal to the full Council in due course. They are also exploring a project to decorate the village with floral displays called Broomfield in Bloom. No final decision has been made but the committee are looking at a number of options and talking to Broomfield Cottage Gardeners about the role they could play in implementation and maintenance of the displays going forward. Any other volunteers would be very welcome.

Traffic Issues

The other matter causing great concern around the village is traffic in its many forms. At our November meeting we noted the tragic death of a long standing resident, Skip Catley, in a road accident and we are aware of other incidents since then. We talked about what each Councillor would do with £50,000 if they had a free hand. Many things were discussed but the subject that received most support was traffic.

Parking and roads generally are not the responsibility of the Parish Council and we have little influence over Chelmsford City Council or Essex County Council but we can lobby them to an extent and we can encourage behaviours. We constantly receive letters from residents about parking near the hospital, parking on pavements that block and cause danger to users of wheelchairs and buggies and speeding and parking in School Lane in particular.

We decided that we would set aside our February meeting to discuss the various traffic issues and what we might be able to do ourselves, especially if we can invest some money in specific projects.

Remember village residents are always welcome at Council meetings.

John Barnes

Anderson & Co. Tar Macadam

Chignal Smealy, Chelmsford, Essex
Tel: 01245 445244
Mobile: 07714 287296

Tar Macadam and Asphalt Contractors

Complete construction of Drives, Footpaths, Car Parks, Roads and Block Paving, Dropped Kerbs, etc.

Also coloured Tarmac, Hot Tar, Spraying & Shingle. We can revitalise & restore your existing driveway with a new Dense Bitumen Macadam Overlay.

Trading Standard Approved
County Council Approved
Bradstone Assured Approved




Chelmsford
market

INDOOR MARKET
Tuesday – Saturday

HIGH STREET MARKET
Friday & Saturday

www.chelmsford.gov.uk/market
Tel: 01245 605717

Second hand Market – Thursday

www.chelmsford.gov.uk/market

Chelmsford City Council



BALLOONS & PARTY

@ Broomfield

Balloons & Party stock thousands of lines across our departments. A wider range of party ware including banners, decorations, tableware, invitations, table centrepieces, badges, and much more.

Balloon Deliveries
Weddings
Corporate
Handmade Cakes
Cards
Gifts

10% OFF WHEN YOU MENTION THIS ADVERT (valid until the end of May)

01245 350600

Balloons & Party at Broomfield



HOME CLEAN DIRECT

Home Clean Direct is a local family run business which offer exceptional Carpet, Rug and Upholstery Cleaning direct to your home.

- ✓ Highly Rated Local Business
- ✓ Full Trained and Insured
- ✓ Proud member of the NCCA
- ✓ Free Quotes
- ✓ Will re-clean if not totally happy with the result, for FREE

Contact us today!
01245 200585
✉: info@homecleandirect.co.uk
www.homecleandirect.co.uk

@homecleandirect

Village Amenities Committee

I (Cllr Sue Hubble) have taken over as chairman of the Village Amenities Committee and Cllr Les Steed agreed to continue as Vice Chairman.

Parsonage Green

A quotation from JCM Services was accepted and work has been carried out to clear the culvert and surrounding areas. Observations from Conservation Volunteers confirmed that the pond is in good condition and no work is required at this time.

Centenary Woods

An apple tree has been planted, and plans are underway for Broomfield Scouts to bury a time capsule and plaque close by to commemorate 100 years of the Broomfield Scout Movement.

Trees

Two trees in David Smith Field have been destroyed and it was agreed that they both be replaced as soon as possible.

With so many fine trees in Broomfield, discussions are taking place regarding their protection. A brief article in this issue of Broomfield Times, outlines how parishioners can request that Tree Preservation Orders (TPOs) be placed on specific trees.

Allotments

Although working an allotment plot is probably not on your mind at this time of year, now is probably the best time of year to request one, with Spring just around the corner. Currently there are three half plots and one quarter plot available. Contact the clerk if you would like more information.

By the time you receive the next issue of Broomfield Times we hope to have an Allotment Association in operation to give a voice to allotment plot holders about improvements.

If you are an allotment holder and are interested in being involved with the association please contact the Parish Clerk.

Broomfield in Bloom

Currently in the discussion stage, it is hoped that the Parish Council, together with the help of residents and the Cottage Gardeners, can make Broomfield a more beautiful place to live, with planters and floral displays as well as herbs and vegetable plantings around the village!

Parish Pathways Partnership (P3)

P3 has been suspended whilst we look for a new leader and consider alternative ways to directly report problems. Are you interested?

Sue Hubble



JIM'S DÉCOR & MAINTENANCE

- Traditional & Modern Décor Renovation
- Wall Lining & Paper Hanging
- Appliance Installation & Repair

Liability insurance backed • Over 30 years' experience

✉ jimsdecor@hotmail.com 07802 245129
 🌐 www.jimsdecor.co.uk



SM PLUMBING & DRAINAGE

07541 870 984
spencermakale@hotmail.com

- ◆ General plumbing work
- ◆ Shower Installation & Repair
- ◆ Water Leak Detection
- ◆ Water Supply Pipe Repairs
- ◆ Blocked Baths, Sinks & Toilets
- ◆ All Toilet Repairs
- ◆ Plumbing Repairs to Complete Bathroom, Servicing & Renewals

Call or email for a free quote



Highwood Landscapes & Purrfect Paving



DON'T DELAY...CALL TODAY!

SPRING SPECIAL DEALS

- Trees • Pruning • Hedge Trimming • Roots Removed •
- Topping & Rotovating • Turfing • Fencing • Garden Design •
- Decking • Patios • Block Paving • Drives • Tar & Shingle •

PROPERTY MAINTENANCE

- Roofing • Chimney Repairs • Building Work •
- Flat Roofs • Guttering • Fascias & Soffits •

01245 422 804 | 07711 606 561

www.highwoodlandscapes.co.uk

Free written quotes & advice | 10 year guarantee on all work | 35 years of experience
Unit 1, The Paddocks, Highwood, Chelmsford, CM1 3PU • email info@highwoodlandscapes.co.uk

To advertise please call
01843 269513



Specialist vape shop offering over 120 flavours available to test in store. Professional advice for all of your vaping needs. Along with a coffee bar offering hot and cold refreshments.

CALL
01245
608112

10% off with
this advert

[vaperbarchelmsford](https://www.facebook.com/vaperbarchelmsford)

[@vaperbar_chelmsford](https://www.instagram.com/vaperbar_chelmsford)

www.vaperbar-chelmsford.business.site

190a Moulsham St • Chelmsford • CM2 0LG

Broomfield Park Consultation

On 15th May, Broomfield Parish Council will be consulting you about how Essex County Council (ECC) land, south of Broomfield Place, can best be used to provide facilities in our community for future generations.



The Grade 2 Listed Building still watches over its old parkland!

If you have any ideas now, please tell us BEFORE April 30th so we can include them in the consultation. Then please join us on the site we have affectionately named as Broomfield Park on May 15th where we hope you will be inspired by other proposals, feed in your comments and help create a vision that ECC are prepared to consider, perhaps leaving a legacy our children, grandchildren and great grandchildren.

The Background

In the 1940s Essex County Council purchased Broomfield Place estate. In 2001 some of the land was sold for Madelayne Court Care Home, for the sum of £100,000. In 2008, BPC devised a strong plan to purchase the house. Sadly this was rejected and the solicitor there today bought the beautiful house and garden (for £975,000), leaving almost six acres which is still owned by Essex County Council.



One of the great redwoods in better days



The redwood is still there, even though the grassland around it has gone wild!



The car park – left over from the days when Broomfield Place was a Teacher Training Centre in the 1980s and 1990s.

Planning

For years the land was part of a development project, delivering 223 dwellings, along with a new Broomfield Primary school. When a new plan to expand Broomfield Primary School on its existing site was confirmed in 2018, Essex County Council considered selling the land for development, but withdrew saying:

“The use of any proposed site needs to work locally with the community and must consider the impact on surrounding services and infrastructure. Any future use of this site will be considered with this in mind.”

In the new Local Plan, this land is classified as ‘rural land outside the Green Belt’, so any change of use will require a planning application, mindful of the impact on infrastructure.

Currently

Last year, ECC designated the remaining land (south of, and not including Broomfield Place house) surplus to requirements. The Parish Council approached our County Councillor, John Aldridge, to see if we could use the land

for the community in the short term as well as be involved in any long term planning. Absolutely nothing has been agreed and there is a reasonable chance that ECC will do nothing for years to come. It would be easy to sit back and enjoy the wilderness as it stands today. However, the Parish Council has created a working group to explore various proposals and we firmly want parishioners to have a say.

One idea is a Local Nature Reserve to be maintained by volunteers under expert instruction and enjoyed by the community. If this was possible it would provide protection against future development of the site. Another popular suggestion is a doctor’s surgery. This would have to be with the consent of the NHS Trust and ECC.



The view west from the car park

However, BPC have been clearly instructed that “The land will be used for the benefit of the county, not just the village.”

Therefore, we would be wise to devise a plan that has ECC responsibilities at the heart of it. The more revenue we can save ECC, the



Unofficial footpaths have grown up – this one runs northwards from the allotments to the ScoutHut in School Lane.

greater chance we have to retain the land and reduce the risk of the land being sold to raise the finance. *I must stress this is a personal view and has not been discussed yet with full council.*

ESSEX COUNTY COUNCILS RESPONSIBILITIES INCLUDE:

- Activities, Arts and Heritage
- Births, Ceremonies and Deaths
- Business and Partners
- Community and Safety
- Education and Schools
- Environment and Planning
- Health and Social Care
- Libraries and Archives
- Transport and Roads

To Conclude

Essex County Council owns this land, so ultimately they decide. However, the Parish Council will do all it can to make sure our residents' views are clearly heard and to get the best possible outcome for our community.

So please:

- **Tell us any views you have now so we can include them in the consultation**
- **Come along on 15th May**
- **Complete the questionnaire which will be published in the Broomfield Times summer edition.**

Broomfield Place Working Group

Main dealer & stockist for **HAYTER** Main agents for **Mountfield** **MTD** **ALIKO**
We also stock **QUAICAST** **VERCO** **STIHL**

It's Your Village, Have Your Say

ON BROOMFIELD'S FUTURE

Neighbourhood Plan

The last three months have been pre-occupied with the Chelmsford Local Plan (see the separate article on this), so there hasn't been a lot of time to progress the Neighbourhood Plan.

However, our professional Landscape Character Appraisal has been completed, by Alison Farmer Associates. It provides a lot more objective detail to add to the opinions that local residents gave us in the questionnaire. It also contains useful guidance about how the quality of our countryside can be maintained and even improved. You can read it on our website at:

www.broomfieldessex.co.uk/np.

Also, we've taken a step forward on the Neighbourhood Plan safe cycle path network. We persuaded the Cabinet Member for Highways and Transportation (Essex County Council) to authorise an initial feasibility study on the possible cycle routes that we presented last summer. We hope that will be completed in the next couple of months.

With the Local Plan Examination now out of the way, we can get stuck into the Neighbourhood Plan again. The next 3 to 4 months will see further professional surveys carried out, so that the Plan can be based on hard, up-to-date evidence. Over the summer, we hope to produce a first draft of the Plan, with lots of consultation to follow in the Autumn. So watch this space!

Broomfield Neighbourhood Plan Steering Group

Broken Basketball Hoop



Since the Parish Council installed the new hard play area on Angel Meadow last Summer the basketball hoop has been vandalised twice.

What should we do? Please let us know your views - should we continue to spend money on replacing it, purchase a more expensive but stronger one or remove it for the time being?

Please email:
planning@broomfieldessex.co.uk



P SMITH
 PLUMBING & HEATING

- BOILER SERVICES
- BOILER BREAKDOWNS
- FULL INSTALLATIONS
- SYSTEM UPGRADES
- PART L ENERGY EFFICIENT
- UNDER FLOOR HEATING
- LANDLORD REPORTS



No 219311
07801 817443
01245 521127
 smith-paul104@sky.com

www.psmithplumbingandheating.co.uk
 9 Redmayne Drive, Chelmsford CM2 9XF



Pleshey Tree Services
 Tree Surgeons & Arborists

Pruning & Shaping • Felling & Removing • Planting & Advice

Friendly, professional service • Free quotations & advice

www.plesheytreeservices.com

tomcrees@plesheytreeservices.co.uk | **01245 362988**

NPTC qualified | Council approved | Work compliant to BS3998 & BS5837 | Fully insured

Chelmsford Local Plan - the Final Chapter?

It's been a long running saga. But now, at last, the final chapter is being written.



The Planning Inspectorate

The Local Plan is the blueprint for development in Chelmsford between 2021 and 2036, setting out where new homes,

offices, shops and employment areas will be built. It all started in 2015.

Initially, Broomfield was threatened with another 1,700 dwellings and the possibility that it would be swallowed up into Greater Chelmsford. Since then, with the help of local residents and an alliance with neighbouring parishes, Broomfield Parish Council has got that figure down, first to 1,000 and now to 450 dwellings.

The final chapter of the Local Plan story is called the Examination in Public. It means that an independent planning inspector (appointed by the Government) 'examines' or considers the Local Plan that has been drafted by Chelmsford City Council. Organisations with a particular opinion can ask to have 'a seat at the table' - which means they can contribute to the discussion.

After the public hearings are over, the Inspector (Ms. Yvonne Wright) goes away to think through all the evidence that she has heard, both written and verbal. Eventually she will write a report to say if the proposed Local Plan is 'sound' or not. If not, she'll say if it can be made 'sound' with some changes. Or she can throw the Plan out altogether, in which case Chelmsford City Council would have to start the process all over again.

The public hearing sessions lasted from the middle of November to the middle of December, with one week's break in the middle. They took place in the Council Chamber at the Civic Centre, where many of the earlier decisions leading up to this point had also been made.



Hearing sessions are formal, with strict procedures to show that justice is being done. It's a bit like a courtroom. Although no one wears wigs or gowns, you have to call the inspector 'Sir' or 'Ma'am', and woe betide anyone who wastes her time! If you're invited to 'sit at the table', you're there to help her think through the main issues, not to score points or play to the public gallery.



Any developer who is unhappy with the draft Local Plan is likely to be represented, sometimes by a team of experts led by a barrister or a QC.

Our Parish Council Planning Committee decided that we also needed to be represented by a professional planning consultant and traffic expert, as we still have major concerns about the proposed development 'north of Broomfield' and its effect on traffic levels through the village. Of course, we have nothing like the budget of developers, so we got together with our neighbouring parish councils (Chignal, Little Waltham and Writtle) who have similar concerns, so that we could share costs and get the biggest bang for our very limited bucks.

We had to do a massive amount of preparatory work to make sure our consultants were properly briefed. I attended all the sessions that had a bearing on Broomfield – four days in all. I sat behind our consultants, so I could pass them a note if I thought a particular point needed to be made. However, I was very glad that I wasn't sitting at the table.



Proposed Growth Site 6 – ‘North of Broomfield
The growth area is marked in yellow on the map and is outlined in red on the Google Earth image. The SPA (Special Policy Area) is the Broomfield Hospital site

It's a professional judgement whether to raise a point or not.

If it's already been raised by someone else, there's probably no need to raise it again and it may only annoy the Inspector. Also, inspectors expect parish councillors who speak to know more than 'Joe Public' (even though we're laymen and women too), so are likely to give short shift to any parish councillor who comes

out with a load of well-intentioned waffle that doesn't cut the mustard in planning terms! The speaking parts are best left to the professionals who can express our arguments concisely, and in planning terms that carry more weight with the Inspector.

At the time of writing, everything is in the lap of the Inspector. Her report is expected at the end of February/start of March and then all will be revealed.

In the next edition of Broomfield Times, we'll be able to tell you what it all means for Broomfield.

John Blake

Chair of Planning Committee

For more information about the Chelmsford Local Plan and the Examination in Public, go to: www.chelmsford.gov.uk/planning-and-building-control/planning-policy-and-new-local-plan/new-local-plan

Gary K. Steggall



- + Tree Surgery
- + Reductions
- + Felling
- + Hedge Trimming
- + Seasoned Logs
- + Site Clearance
- + Free Estimates
- + Fully Insured
- + **£5m Public Liability**

07971 696375

01245 496758

garysteggall499@btinternet.com



Is your  body perfect?

DENT REPAIR FROM ONLY £55!

For a quote or further information
 call Paul on **07779 090572**
 or email info@diamonddents.co.uk



www.diamonddents.co.uk

www.flatpackready.co.uk

John Nicholson

Carpenter
 Painting & Decorating
 Handyman
 Flat Pack Assembly
 Door Hung
 And More...

07597 851000

flatpackready@gmail.com

Local Elections

Local elections for both your parish and city council representatives will take place on May 2nd. But what is their role, who can represent you and why bother to vote?

On the 2nd May, your Parish and City Councils will be holding elections, and you are invited to take part. Broomfield Parish Council is calling on residents who are passionate about their community to stand for election in the May 2019 parish elections.

What do local councillors do?

Local councillors are the champions of their community and give residents a voice on the decisions the council makes. If you would like to be involved in improving and preserving facilities for the wider community, and would like to be involved in making decisions about how the local budget is spent, then you should consider it.

Becoming a local councillor will allow you to make a real difference in your community by engaging with residents, local groups and businesses to find out their needs; making decisions on which services and projects the council should take forward; and getting involved locally to ensure the services are meeting your community's needs.

Parish Councillor

You will be reviewing the planning applications that fall within the Parish boundary. This includes checking it complies with the village design statement and for larger developments working closely with City Council. You will be taking part in projects to improve the look and feel of the village as well as managing things like the allotments, footpaths, playing fields and village hall. The Parish Council helps local groups and organisations through grant funding.

A Parish Council not only has to manage its budget, it also decides how to spend the infrastructure funds that are awarded when development takes place within the Parish. For a recent example, go and see the adventure cycleway taking shape behind the village hall.

That is being part-funded by funding from the development of Day's Garage.

City Councillor

Broomfield and the Walthams has three Councillors representing them on the city council. Their brief is to manage the local resources for the good of the entire City of Chelmsford. However, they are your representatives to voice any local concerns you should have that fall within the range of the City Council. You can find their contact details on page 4 of this magazine

The City Council is the planning authority, with responsibility for both the short and the long term. They have the final say on individual applications, but they also develop the long-term strategic plans in the form of the Chelmsford Local Plan.

The City Council is the waste collection authority, collecting the household waste and recycling. They decide on recycling policy, maintain parking facilities, outsource residential parking schemes and set prices on their carparks. They maintain our parks and sporting facilities such as Riverside, public tennis courts, football and hockey pitches. They manage the social housing waiting list, working alongside private companies and landlords. They are responsible for CCC policy on homelessness and what action to take.

How long does it take?

It's up to you. Typically a Parish Councillor will devote three or four hours a week for their work. This often includes attending meetings, engaging with residents and speaking on behalf of the council to other bodies. Being a City Councillor could take much more time with a typical councillor spending up to ten hours a week on their role. As always, some councillors give more, others less; it is the quality of the contribution, not the time it takes.

Can I stand?

Most people are qualified to stand for election to their local council but there are a few rules. You must be:

- A British citizen, or a citizen of the Commonwealth, or the European Union
- 18 years of age or older
- Live in an area that is served by a local council

Being a councillor may not be for you, but please remember to vote.



Andy's Aerials

Essex CM1 **Your local aerial installer**

- » New aerial & satellite installations
- » Aerial & satellite repairs
- » Extra TV points
- » TV wall mounting
- » System design & install
- » Freesat & YouView installations

Family-run business with over 20 years of experience

Trading Standards Approved Aerial Installer

Quality workmanship at sensible prices



Freephone **0800 77 97 047**

Mobile **07916 305 977**

Mobile Local Rate **0333 900 333 2**

Email andy@andysaerials.com

www.andysaerials.com

LKG Daughters
Plumbing and Heating Engineers Ltd



City & Guilds
Qualified

From a tap to a full bathroom

01245 478111

07710 358347

Local family business established 1997

- Boiler Renewals & Repairs
- Central Heating & Repairs
- Bathroom Suite Installations
- Pumps & Port Valves
- Taps, Ball Valves, etc
- All Work Guaranteed
- Female & Male Engineers

emergency service

24hr

emergency service



www.lkgdaughtersplumbing.co.uk

COMPUTER PROBLEMS?



IS YOUR COMPUTER RUNNING SLOW, CRASHING OR JUST GIVING YOU PROBLEMS?

Microsoft CERTIFIED IT Professional

Then give Micromend a call for free advice
No call-out fee • No fix, no fee

YOUR LOCAL FRIENDLY SPECIALIST FOR

- All PCs and laptops
- Apple Macintosh
- Configuring iPads, iPhones and Android mobiles,
- Internet problems
- Virus removal

- Upgrades and replacement of your old machine
- Install custom-built Windows 7, 8 and 10 PCs
- We can advise on child safety
- We are CRB Registered

For more information on our services visit
www.micro-mend.co.uk | emailglen@micro-mend.co.uk
 mobile 07788 925085 | office 01245 463330

Tree Preservation Order



We are very blessed in Broomfield to have some fine, beautiful trees and it is quite sad when for no apparent reason trees are felled to the ground. Did you know that anyone can request a Tree Preservation Order (TPO) to be put in place whether the tree is In your own back garden or on any piece of land?

You can apply to Chelmsford City Council to have a TPO placed on a tree or Broomfield Parish Council would be happy to do this for you. Hefty fines are issued to those defying the Order.

In the first instance you will need to let us know:

- The type of tree
- Why you believe the tree is under threat
- Why you consider the tree to be important
- Location of the tree
- The owner of the tree if known

Your application will be dependent on how:

- Visible the tree is to the public
- Important it is, including its size, its future benefit to natural beauty and wildlife and its value as a screen
- Significant in its local surroundings
- The tree could be affected by a new development

Sue Hubble

JOIN OUR SPRING LITTER PICK

SATURDAY 23RD MARCH

MEET AT BROOMFIELD VILLAGE HALL

AT 10.00 AM

FOLLOWED BY REFRESHMENTS

AT 12 NOON

CHILDREN WELCOME

ALL EQUIPMENT PROVIDED



Farleigh Hospice

Volunteer with us

MEET NEW FRIENDS

LEARN NEW SKILLS

BE PART OF A TEAM

GIVE SOMETHING BACK

Speak to us today

about volunteering opportunities



For information visit
www.farleighhospice.org



Village Diary

Various activities including Karate, Bingo, Bridge Club, Aerobics, Women's Institute, Carpet Bowls, slimming clubs and children's activities take place in the Broomfield Village Hall on a weekly basis - please telephone the Village Hall **01245 443902**, email **hall@broomfieldessex.co.uk** or have a look on the website **www.broomfieldessex.co.uk** where the village diary is also published, for more information.

March

4 Stay N Play 09.15-11.15
Broomfield Village Hall
Baby and toddler group for under 5's, parents and carers

6 Coffee morning with Mobile Customer Information Centre 10.00 - 12.00
Broomfield Village Hall

Orchard Springs W.I. 7.30 p.m.
Broomfield Village Hall
Property & Planning Committee 7.30 p.m.
Broomfield Parish Office

11 Stay N Play 09.15-11.15
Broomfield Village Hall

13 U3A 1.30 p.m.
Broomfield Village Hall
Market and Nursery Gardening and Orchards in Mid-Essex c 1840-1990, with particular reference to Broomfield, Neil Wiffen

Village Amenities Committee meeting
Broomfield Parish Office 7.30 p.m.

15 Quiz night 7.30 p.m.
St Mary's Church

18 Stay N Play 09.15-11.15
Broomfield Village Hall

25 Stay N Play 09.15-11.15
Broomfield Village Hall

27 Broomfield Cottage Gardeners 7.15 for 7.30 start
Broomfield Village Hall
Anyone for Vertiginous Gardening, Paul Harrison

April

1 Stay N Play 09.15-11.15
Broomfield Village Hall

3 Coffee morning 10.00 - 12.00
Broomfield Village Hall

Orchard Springs W.I. 7.30 p.m.
Broomfield Village Hall

Property and Planning Committee 7.30 p.m.
Broomfield Parish Office

10 U3A 1.30 p.m.
Broomfield Village Hall
Magistrate in the Community Dawn Roche

Village Amenities Committee meeting
Broomfield Parish Office 7.30 p.m.

17 Finance 7.30 p.m.
Broomfield Village Hall

27 Church Material 2.00 p.m.
St Mary's Church
A deep history in walls - Ian and Ros Mercer

29 Stay N Play 09.15-11.15
Broomfield Village Hall

May

1 Coffee morning with Mobile Customer Information Service 10.00 - 12.00
Broomfield Village Hall

Orchard Springs W.I. 7.30 p.m.
Broomfield Village Hall

Property and Planning Committee 7.30 p.m.
Broomfield Parish Office

8 U3A 1.30 p.m.
Broomfield Village Hall
The Story of an Extraordinary Cambridge House, Tamsin Winhurst

Parish Council AGM 7.30 p.m.
Broomfield Village Hall

15 Electors Meeting* 7.30 p.m.
Broomfield Village Hall

13 Stay N Play 09.15-11.15
Broomfield Village Hall

18 May Fayre
St Mary's Church, Church Green

19 Broomfield Cottage Gardeners Charity Plant Sale 10 a.m. - 12.00
The Barn, between 149 & 151 Main Road

20 Stay N Play 09.15-11.15
Broomfield Village Hall

22 Parish Council meeting 7.30 p.m.
Broomfield Village Hall

* For the residents of the Parish to raise any issues with the Parish Council

Village Hall report

It is with sadness we report the departure of our Secretary, Kathryn Cameron. Over eight years Kathryn has been a stalwart of our Village hall. She played a significant role in the development of the wonderful facilities we now all enjoy. From a personal view, she assisted enormously in the raising of the finance, planning, and delivery of our plans, and I will always be very grateful for her steadfast assistance. The Village Games which we have all enjoyed came with huge effort from her and her family. We wish her every success in her new role as Deputy Clerk at Maldon Town Council.

Construction of our long awaited Adventure Cycleway commenced at the end of January and we look forward to that with excited anticipation.

On Wednesday 20th February we have our Seniors' Lunch featuring the band "Fleeting Shadows" reprising the music of the sixties. Fun for all we hope!

Trevor Jones

STAY 'N' PLAY



Mondays 9.15 to 11.15
Under 5s
£2.50 for one adult & up to two children
50p per extra child
Broomfield Village Hall

Price includes Tea, Coffee, Juice, toast & biscuits

Broomfield U3A



The local branch has continued to flourish in 2018, and finished off the year at our December meeting with entertainment from Steve Geller, whose 'Christmas Crackers' speciality act comprised a unique blend of comedy and music.

Steve's virtuosity and charming humour combined with great songs ensured everyone had a really great time. A lot of singing and foot tapping was done. As he's previously played before the Royal Family it's no surprise we were 'right royally entertained'.

Our scheduled January speaker unfortunately had to cancel, but into the breach stepped Broomfield member Ian Mercer, whose illustrated presentation, entitled 'Love and War' was a fascinating and poignant account of his quest to unravel a family 'mystery', the identity of his grandfather, and the reasons for his grandmother's lifelong silence about him.

Ian's lengthy and dogged investigations led to the discovery that his grandfather was German, and had met his grandmother whilst both were working at the prestigious Royal Clarence Hotel in pre-WW1 London and had been interned throughout the First World War before being repatriated to Magdeburg. Exploring the German sources, led ultimately to the discovery, and joyful reunion of English and German branches of a family previously unknown to each other.

Ian tells us he will shortly be publishing a full account in a book, and there's even talk of a film script over in Germany.... The book promises to be a great read for anyone interested in genealogical research, or with an interest in 20th Century history, spanning as it does, two world wars, and the Cold War, and their effects on individuals and their families.

Glynn Wadeson

Mackenzie Art Classes

James Mackenzie runs four week art courses and also one off Art & Sip evening sessions.

The next available four week course starts February 5th, the price is £80 (£20 per two hour session).

The course runs in the day on Tuesdays (12.00am – 2.00pm) at Broomfield Village hall and on Tuesday evenings (7.30pm - 9.30pm) at the Broomfield studio venue on Main Road.

The course starts with colour mixing techniques in acrylic paint and painting using tone to create direction of light.

By the end of the four sessions all attending will create a canvas painting of their own landscape from a photo they bring in to work from.

The Art & Sip sessions take place at the same evening venue from 7.30pm - 9.30pm on Thursdays.

These are one off classes where all attending are inspired by the same artwork and create an acrylic painting on canvas to take home the same evening.

For more information please visit:
www.artandsip.co.uk

James Mackenzie



Mackenzie ART Classes

Daytime art courses and evening art & Sip sessions available

James Mackenzie has a Fine Art Degree and a Postgraduate Certificate in Education (PGCE). He is an experienced qualified art teacher and a professional artist

Private art lessons are also available and if you would like an art & Sip session at home or for an event get in touch

For all information please visit: www.artandsip.co.uk – email: mackenzieartandsip@gmail.com – Tel: 07796673783

**100TH
BIRTHDAY
IN 2019**

Prestons Garages

**WE
SELL
CALOR
GAS**

A familiar and popular name in the area, Prestons has firmly established itself, with 100 years of business as of 2019, as one of the leading independent motor dealers located in the Chelmsford area.

Skoda aftersales dealership, dealing with your aftersales needs, service, MOT and repairs.

**Preston Garages Skoda
Sales & Filling Station**
2-4 Lordship Road,
Writtle CM1 3EH
Tel: 01245 420262

www.prestonsgarages.co.uk

Rooftops

(Contractors Ltd)

We carry out all aspects of Roofing, Guttering Fascia & Soffits, all types of Flat Roof Systems, New Roofs, Repairs, Lead & Zinc Work, Rendering, Pointing & Brick Work, Loft Conversions

All staff are CRB checked & we carry public liability insurance.

13 Old Croft Close, Good Easter, Chelmsford, Essex, CM1 4SJ
Telephone: 01245 230971 Mobile: 07970 170062/3
Email: roof.tops@hotmail.co.uk

Susan Keeble Art Class

Here are a few of the Art Class students looking pleased to be back after the Christmas break!



The Art Class continues to run on Thursday afternoons, between 1.30pm and 3.30pm, in the small hall.

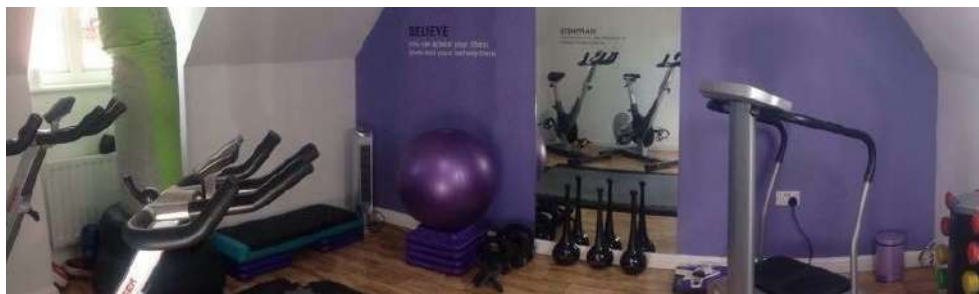
During the Spring term the class has covered 'Mixed Media,' 'Landscape,' 'Boats' and 'Painting in the Style of Michael Morgan'. Each mini-project usually lasts for three weeks, so

that the subjects can be explored in some detail. I often start the project with a short demonstration, or sometimes, such as with Painting in the Style of a particular Artist, we will start with a slide show, so that we can look at and discuss the subject, before each student starts work, interpreting the subject in their own personal way.

Individual styles and approaches are always encouraged within each subject, as can be seen if you visit my website and go to 'Students Work' then 'Thursday Afternoon Class'. You will be able to see some of the students' most recent paintings and drawings.

The class remains popular, but there will be a few vacancies for students in the Summer term. It is a mixed ability (adult) class, so everyone is welcome, regardless of previous experience.

If you are interested in joining the class, or would like to find out more, please contact me through my website: www.susankeeble-artist.com, or phone **01277 353973**.



Shimmy 'n' Groove Fitness

We are thrilled to have extended the timetable of classes at Broomfield Village Hall and are now in your community 5 days a week offering a variety of community fitness sessions.

As always, classes are designed for all fitness levels and are still just £5 pay as you go for most classes. We also have a variety of social events throughout the year which are open to friends and family.



"Bring your sense of fun!"

Lindsey Abbott

Shimmy 'n' Groove fitness ltd

Tel: **07886 721411**



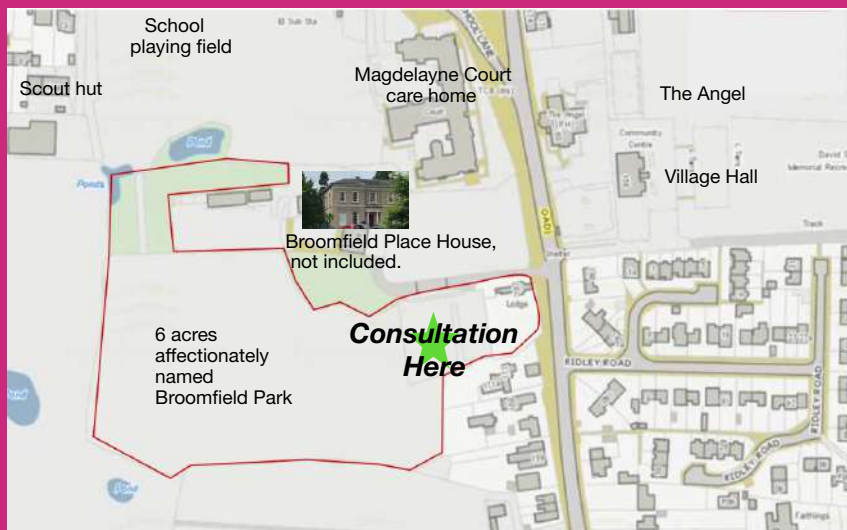
ShimmyAndGrooveFitness



@Shimmyngroove

BROOMFIELD PARK CONSULTATION

What would you do with six acres? E-mail your idea to clerk@broomfieldessex.co.uk; post to the BPC, 158 Main Road.



WEDNESDAY MAY 15th

2 - 4pm; 6.30 - 8pm

BROOMFIELD PLACE CAR PARK

Visit the site and be inspired

Entry to Broomfield Park is opposite The Village Hall turning.

**In case of extreme weather we will host the consultation in
Broomfield Village Hall from 6.30 - 8pm only**

Results will be available to view soon after on line at www.broomfieldessex.co.uk and at The Royal British Legion Social Club



1st Broomfield (Kantankye) Cub Pack

2018 has been, as ever, a busy year so far for the Cub Pack.

We started the year with our winter indoor camp at Belchamps Scout Activity Centre. Cubs had a go at crate stacking, traversing, outdoor games in the dark, and even practised First Aid on the leaders.

Best of all the infamous Belchamps assault course, was nice and muddy again this year - Cubs took it on with great enthusiasm!

Over the Spring term Cubs helped deliver book sale leaflets, went swimming, tasted Chinese food, played in the snow, had an Easter egg hike and practised firelighting. We entered a team in the District Swimming Gala and came third with every swimmer making it through to the finals - well done to all who took part. Some of our Cubs also took part in a District organised Easter activity day which was great fun.

We held a back to basics camp in May for our Sixers and Seconders. They hiked most of the way to Riffhams in Danbury, put up and took down their own tents and prepared some of their own meals (cooked over the campfire) - all valuable skills they will need when they move on to Scouts.

In June we attended Megacamp - a huge event organised by Essex Scouts. Over 1600 Cubs and their leaders spent the weekend at Skreens Park for this medieval themed camp. It was brilliant! There was so much to do from "It's a Knockout" competition to inflatables, kayaking, pop up observatory, air rifles, petrol go karts, fake wounds, circus skills, craft, archery, tomahawk throwing, climbing, abseiling and also wonderful displays from the re-enactors. Some of our Cubs were even knighted by King Arthur! What a wonderful weekend!

The Summer Term was action packed. In addition to the camps we have also been kayaking, cooked dough twists on campfires lit by the Cubs, and made "severed heads" - out of papier mache - for our Megacamp boundary. All very gruesome! We helped move some of the wood chippings into Centenary Wood, visited Essex County Cricket Ground and took part in some training, did tracking and hiking, archery, air rifles, catapults and tomahawk throwing.

We went bug hunting and then made some pebble bugs which were entered into the Cottage Gardener's Summer Show, achieving 1st and 2nd place - well done! We visited Skyropes again and finished the term with water games ending in a massive water fight.

Planning is already underway - it should be great! We are still looking for more adults to join

us as volunteers. We do have a great time and it is wonderful to see the Cubs develop confidence and skills. Please contact us on broomfieldcubs@live.co.uk if you would like to come along for a visit to see what we do.

We have recently started a new activity with the young people in the group - tomahawk throwing - all done under very close supervision and with a number of safety rules of course. But to do this we do need targets - these we make out of "rounds" or slices of tree trunk - any softwood will do. We are having great difficulties in getting hold of these - can anyone help us out?

Please do spread the word and again, contact us on the email above.

Steff Smith (Akela)
1st Broomfield Cubs

1st Chelmsford Guides

1st Chelmsford Guides had a very constructive winter term and successfully completed the Stage 3 First Aid badge from the new programme plus the Traditions of Guiding badge from the old Guiding programme.

Now in the spring term they are undertaking the Express Yourself Stage 3 badge. The Girl Guides have been very excited to complete this badge as it allows them to express themselves by telling stories as a group, make their own comic strips and create art that tells a story within one picture. The last one was a bit of a challenge!

Over the spring term the Guides have also organised a 'bring a friend evening', inviting their friends to a games night within the unit. This evening included bingo, a quiz, lots of fun and of course some prizes.

As well as trying to complete another stage badge from the new programme the Guides have been continuing with the 100 Year

Challenge badge for our unit's 100th birthday. To gain this badge the girls have to complete 100 tasks, 50 in their unit and 50 at home. This might sound a lot but these tasks vary and can be anything from something as simple as making a cup of tea at home to playing parachute games within the unit.

Currently I am the only leader running the unit and we are calling out for new leaders or helpers. To register your interest to volunteer for 1st Chelmsford Guides please visit the Guiding Website www.girlguiding.org.uk/get-involved/become-a-volunteer/register-your-interest/

As we continue our celebrations this year we would like to encourage any girls aged 10-14 years old to join our unit and take part in the wonderful activities Girl Guiding has to offer.

To find out more about what we do and register your interest please visit www.girlguiding.org.uk/what-we-do/guides-10-14/

Leah Powell

RURAL RAMBLE

Walk 1, 4 or 10 miles or simply explore the gardens and enjoy a cream tea!

Helen Rollason
Cancer Charity

Registered charity number 1052861



SATURDAY 13TH APRIL

**The Gardens of Easton Lodge
Little Easton, Dunmow, Essex CM6 2BD**

10 mile walk & garden visit

Adults - £15.00
Children 5 and over - £8.00
Family Ticket - £38.00
(2 adults & 2 children 5 and over)

4 mile walk & garden visit

Adults - £10.00
Children 5 and over - £5.00
Family Ticket - £25.00
(2 adults & 2 children 5 and over)

1 mile walk & garden visit

Adults - £8.00
Children 5 and over - £5.00
Family Ticket - £21.00
(2 adults & 2 children 5 and over)

All walks include a complimentary cream tea

To register visit www.helenrollason.org.uk or call 01245 380719

Broomfield Footpath Society - Programme Year 2019

The programme of walks for 2019 will start with a local walk on March 24th. The meeting place for all our walks is at Church Green, Broomfield. If we are going further afield lifts are available for those without cars. No walks are longer than 5 miles and all are very welcome! Walks planned until the end of May are shown below but you can find the full programme on the Broomfield Parish Council website under Broomfield Links.

Sunday afternoons meet at 2:15pm.

Mar 24	Long Shapley – Border Wood – New Barn Lane	Cars to Broomfield
Apr 7	Broads Green - Fanners Green "Primrose Walk"	Cars to Broads Green
Apr 21	Sweeps Walk – Croxtons – Little Waltham	Cars to Broomfield
May 5	Danbury Common "Bluebell Walk"	to NT opp. Cricketers

Wednesday evenings meet at 7:15pm.

May 15	Broomfield "Buttercup Walk"	Cars to Broomfield
May 22	The Queens Head, Boreham – Paper Mill Lock	Cars to Boreham
May 29	Leather Bottle, Pleshey	Cars to Pleshey

ALL ARE WELCOME

No walks longer than 5 miles

Contact - Stuart & Christine 01245 261102 or Pam & Gerry 01245 441021

Follow us at www.facebook.com/broomfieldfootpathsociety or www.broomfieldessex.org



LED LIGHTING
CCTV
UNDERFLOOR HEATING
REWIRES
TESTING AND INSPECTIONS



FOR ALL YOUR ELECTRICAL NEEDS

FREE NO OBLIGATION QUOTATIONS
COMPETITIVE PRICES
FRIENDLY AND RELIABLE ELECTRICIANS

WEBSITE: www.mtelectricalcontractors.co.uk
TELEPHONE: 01245 362176







RGW INSTALLATIONS *ltd.*
 Plumbing and Heating Specialists

Richard Watters
 Plumbing and heating engineer

M 07758 252 707
T 01245 860 396

W rgwinstallations.com
E richard@rgwinstallations.com



41 Peggotty Close, Chelmsford, CM1 4XU



Evening Illustrated Talks

Our 2018/2019 season concludes on 27th March with a talk by Paul Harrison on the subject "Anyone for Vertiginous Gardening". This will be held in Broomfield Village Hall at 7:15pm for a 7:30pm start. Tickets are £3.50 for members or £4.50 for non-members. Refreshments are included.

Charity Plant Sale

We will be holding a Charity Plant Sale on Sunday 19th May from 10am - 12.00 noon at The Barn on the Broomfield Allotments site. The entrance is between 149 and 151 Main Road. This is open to everyone, so please come along and select some plants or seedlings, both flower and vegetable, for your house, garden or allotment. Prices range from 25p to £1, so they are a fraction of garden centre prices. If you would like to donate some plants then please bring these along to The Barn on Friday 17th May between 2pm and 3pm. Proceeds from the sale will go towards our selected Charity for 2019.

Summer Show

This year the Summer Flower & Produce Show will be held on Sunday 14th July in Broomfield Village Hall and will be open to the public from 2pm to 4.00pm. If you are interested in entering any of the classes, which include flowers, fruit and vegetables, floral and vegetable arrangements, cookery and preserves, photographs and handicrafts and children's classes, please contact our Show Secretaries, Selina Matthews on **01245**

443108 or Christine Welch on **01245 355505** for a Schedule (which should be available early April).

Barn News

We have a wide range of general gardening products on sale including a large array of seeds at 25% discount. Opening times are 2pm-3pm on Fridays and 10am-noon on Sundays. In order to benefit from the Barn, you will need to join the Society. Membership is £4.00 p/a, £3.00 p/a for Senior Citizens & £2.00 p/a for Young Gardeners (up to and including 18 years of age).

Membership can be obtained at The Barn at the Broomfield Allotments site or by calling our Membership Secretary, Angela Wild on **01245 441412**.

Open Gardens

We hold Open Garden evenings throughout the summer. These are laid on by members and are only open to members of the Society. They start on 23rd May with a visit to Nick Smith's Nursery and will be followed by Open Garden evenings on the first and third Thursdays in June, July and August. If you are interested in opening your garden to members, please contact Dick Chapman on **01245 266508**.

Website

Please visit our website, which provides information on the Society's activities, at **www.broomfieldcottagegardenersociety.co.uk** and let us have any comments or suggestions. We also have a second website for users of mobile devices (smartphone or tablet), using the same address.

Facebook Site

Please access our Facebook site where regular updates are issued. Please search in Facebook under "Broomfield Cottage Gardeners Society" or type the following link into your browser: **https://www.facebook.com/groups/355859514864259/**



Broomfield Cottage Gardeners' Society



Charity Plant Sale Sunday 19th May

10am—12 noon

The Barn, between 149 & 151 Main Road

Come along to the sale to browse and buy from the wide selection of plants available.



All Welcome



If you have any spare plants or seedlings please bring them along to the barn on either Friday 17th May between 2 and 3 pm or on the day of the sale.

Our Charity for 2019 will be decided at the AGM on the 27th February

www.broomfieldcottagegardenerssociety.co.uk

News from the Cricket Club

With the new season fast approaching, preparations are well underway.



Back row from L to R,
Jack Reilley, Henry Brannan, Robert Cook,
Srihan Yalavarth and Noah Pyne
Front row from L to R, Abhinav
Peddasamayajula, Manveer Singh Sappal,
Jamie Tweed & Ben Baines

Indoor net coaching and practice for the Juniors has already started on a Friday evening and will start for the Seniors in early Spring.

If you are interested in joining in then please let me know. Outdoor sessions will commence late April/early May, details to follow so watch this space!

The Senior's League season will start early May and both teams will be competing once again in the T Rippon Mid Essex League. The 2nd XI will be looking to win their division for the second year running and the 1st XI looking for that elusive promotion.

The club held its annual Presentation evening for the Juniors last Autumn and pictured left are the winners.

Tony Cowell

Chairman

tony.cowell1@btinternet.com



Fire Safety

- Make sure all heating appliances are turned off (oven, hob, microwave, toaster, etc)
- Distraction is a major cause of fire, always pay attention when cooking
- Always keep your hob clear of ALL items
- Turn plugs off that don't need to be kept on
- Plan an escape plan and discuss it with those living or staying with you
- Keep exits clear
- Keep keys near exits but not in the locks
- Smoking is the single biggest cause of injury in a fire: never smoke when tired and always ensure your cigarette has been fully extinguished

If there is a fire in your home **GET OUT –STAY OUT –CALL THE FIRE SERVICE OUT (999)**

Essex County Fire & Rescue Service provide FREE Safe & Well visits. To book an appointment call **0300 303 0088**



Onwards and upwards at Broomfield Football Club

There has been a lot going on at Broomfield FC in recent months.

The girls' football section is maturing nicely with teams training at Under 8 to Under 10 and a team playing competitively at Under 11. Some ladies are also training at the club with a view to forming a team. The Club has just received accreditation from Essex FA as an SSE Wildcats Centre for Girls Football. This will be run in conjunction with Essex FA utilising qualified coaches. It aims to inspire young females to engage with football, make new friends, develop fundamental skills and create the foundation for a lifelong love of football.

A little piece of history was made last weekend as the first ever boys v girls football match took place (see below). It's quite remarkable that it hasn't happened before given that the club's history dates from 1905!

It is still too early in the season to mention silverware but the picture is encouraging. The Over 45 veterans have reached the league cup final, U16 Blaze and U16 Fire both reached round four of the Essex U16 County Cup while U16 Flame Black are still unbeaten in all competitions this season.

The Club will be holding a quiz night on Saturday 9th March (see advert on page 33) We also have a monthly lottery draw for £5 per month payable by standing order. This is open to both members and non members and two

thirds of the total pot is paid out in winnings each month. Well over £1000 was paid out in the first few months. If you would like to support your local club and have the chance of winning a substantial prize, please text Carolyn on 07940 910141 for details.

The club has also opened a Boot Store and has several pairs of good condition second hand football boots for sale for £8 per pair. We are also seeking donations from members and the local community. We see this as an excellent way for the club to raise some money as well as saving parents a small fortune on new football boots every six months. The little ones' feet grow so fast, don't they?!

On the subject of little ones, our Saturday Morning Football School for 5-7 year olds is always looking for new talent. This has been running for many years and our very successful entry level coach, Trevor Miller, is responsible for mentoring several hundreds of players across Essex. More details can be found at www.broomfieldfc.com.

Finally, the club recently received its first visit and formal assessment from the Football Foundation, the sports charity which provided the grant to build the clubhouse. We were very proud to be given a rating of 5 „excellent“ (Example of best practice) for the quality of the site and professionalism of the management committee.

Stuart Paterson

Broomfield Royal British Legion

THE ROYAL BRITISH
LEGION

Following on from Paul our Standard Bearer's contribution in the winter Broomfield Times edition and the hard work put in by the collectors, Broomfield's Poppy Appeal raised over £14,000 so thank you all for your contributions.



The festive season saw a newly invigorated RBL Social Club well on the way to achieving its goal of being the hub for social activity in the village. Social functions were sold out and a huge success.

More entertainment is planned and together with the big screen TVs, darts and crib plus a wide selection of beverages (including tea

and coffee), the RBL provides a great facility for meeting friends and comrades.

Both the Branch and Social Club have benefitted from a refreshing influx of committee members, ever enthusiastic and willing to help and join in. The forming of sub committees within the full Branch committee has spread the work load and the chore factor has disappeared.

The preservation of the building and routine maintenance remains a priority. Work parties may be a solution but in the meantime our stalwart fixers do an admirable job; thank you.

If you are thinking of joining us, come and meet us at our HQ in Saxon Way. A warm friendly welcome awaits you and you don't have to be Ex-Service to join.

Dougal Clifford

Broomfield RBL Social Club

THE ROYAL BRITISH
LEGION

www.broomfieldsocialclub.co.uk

All new members welcome



- * Friendly, family atmosphere
- * Competitively priced drinks
- * Music/entertainment Nights
- * Large TV with Sky Sports & BT Sport
- * Darts, Snooker & Cribbage teams
- * 2 full size snooker tables
- * Bingo every Sunday
- * 3 Dartboards
- * Free WiFi



OPENING TIMES

Mon: Closed
Tue: Closed
Wed: 7pm - 11pm
Thu: 7pm - 11pm
Fri: 7pm - 11pm
Sat: 12pm - 11pm
Sun: 12pm - 10:30pm

For more information visit our website above or come down and see us at
Broomfield Royal British Legion Social Club, Saxon Way, Chelmsford CM1 7YA
(the road in between the Apple petrol Station and the new Higgins development)

You do not need to have served in the armed forces to enjoy these facilities.

Orchard Springs WI

Orchard Springs Christmas party was a huge success.



The entertainment was from Rita B and Lee J and their music and song got most of our ladies up swinging and dancing on the dance floor. There was lots of fun and laughter plus singing along to songs from the 50's, 60's and 70's.

Sheena Ager

BY POPULAR DEMAND

QUIZ NIGHT

?

?

?

?

?

SATURDAY 9th MARCH 2019

7pm REGISTRATION - 7.30pm KICK OFF

£25 ENTRY PER TEAM - MAX 6 PER TEAM

TROPHY FOR WINNING TEAM

TO REGISTER COMPLETE BELOW AND HAND TO BAR STAFF WITH £25

ALL QUERIES TO jason.housden@gmail.com - 07751232259

NAME _____

CONTACT TEL _____

TEAM NAME _____

TROPHY TO WINNER

BEST QUIZ THIS YEAR

Fully trained and qualified installation specialist ready to install Firestone Rubbercover and CYB Fibreglass roofing systems today!

<p style="text-align: center; font-weight: bold; background-color: white; color: #4a7c9c; padding: 2px;">ROOFLINES</p>	<p style="text-align: center; font-weight: bold; background-color: white; color: #4a7c9c; padding: 2px;">ROOFING</p>	<p style="text-align: center; font-weight: bold; background-color: white; color: #4a7c9c; padding: 2px;">CLADDING</p>	<p style="text-align: center; font-weight: bold; color: red;">Checkatrade</p>
--	--	---	---

- Fascias ▶
- Soffits ▶
- Guttering ▶
- Downpipes ▶
- Box Gutters ▶
- Windows, Doors ▶
- Conservatories ▶

- Roof Repairs ▶
- Flat Roofs ▶
- Slate Roofing ▶
- Tile Roofing ▶
- Shiplap ▶
- Bargeboards ▶
- Cladding ▶

Contact us today for your FREE no obligation quotation

T: 01621 815 937 • M: 07534 455 624

Email: info@mklroofline.co.uk • Website: www.mklroofline.co.uk

Charity calls for local volunteers to help extend lifeline of friendship to older people in Chelmsford



Contact the Elderly is a national charity dedicated to tackling loneliness and isolation among older people. The charity has two groups in Chelmsford and is also currently planning a third tea party group due to demand, where older guests will meet one Sunday afternoon each month for tea, cake and companionship.

The charity is urgently appealing for volunteers who could spare a few hours each month to drive one or two older guests to their tea, or host the group once or twice a year – and enjoy a cuppa themselves!

The charity aims to relieve the acute loneliness of isolated older people, aged 75 and above, who live alone and struggle to get out. Each older guest is collected from their home by a volunteer driver and taken to a volunteer host's home, where they meet with a small group for tea, chat and friendship. The group is warmly welcomed by a different host each month, but the drivers remain the same which means that over the months and years, acquaintances turn into friends and loneliness is replaced by companionship.

Contact the Elderly's Development Officer, Georgina Sells, said: "Activities for people aged 75 and above are normally limited to weekdays, so Sunday can be a particularly long and difficult day. Our tea parties are sometimes the only social outing our guests have in a month, so they can make a real difference. However, there's a shortage of volunteers in the area.



CONTACT THE ELDERLY

Anyone who can spare a couple of hours one Sunday a month, has a driving licence, a car and a capacity for drinking tea, is eligible!

We are also looking for coordinators to help with the running of the groups. It's not a big commitment, and our volunteers genuinely get as much out of the experience as our older guests, so I'm calling for anyone who is interested in giving something back to their community to please get in touch with me as soon as possible."

Residents in the Chelmsford area, who are interested in volunteering for Contact the Elderly once a month as a driver, or who know of people who would benefit from attending, can contact Georgina Sells georgina.sells@contact-the-elderly.org.uk 07379 519486 or Freephone 0800 716543

Broomfield Village Hall Every Monday 7.15pm



Classes designed to be enjoyed by people
of all fitness levels and dance abilities!

To book please contact Gemma on 07917 458958 or
gemkchappell@aol.co.uk
All classes only £5

(Qualified ETM Instructor/dance teacher/Zumba Instructor/REPS member)

We know that healthy teeth and an attractive smile can change your appearance and also improve self-confidence. At Aloe Vera Dental Studio, we are here to help you achieve this.

As well as routine dental care, we are able to offer a comprehensive range of cosmetic and advanced specialist treatments such as:

- o Dental Implants
- o Cosmetic Veneers and crowns
- o Orthodontics
- Invisalign, Inman Aligner and Six Month Smiles braces
- o Teeth Whitening
- o Treating nervous patients
- o Facial rejuvenation
- o Fillers and Hyperhidrosis treatment
- o Hygienist

Call us on **01245 357 735**
www.aloeveradental.co.uk



Aloe Vera Dental Studio,
37 Bodmin Road, Springfield,
Chelmsford, Essex CMI 6LL



CHILLS BODYWORKS

ACCIDENT & REPAIR SPECIALIST

We can repair and respray cars of all makes and models!

Using the latest garage equipment and techniques, we offer a swift and cost-effective car body repair service.



Why choose us?

- Reputable car body shop •
- Combined experience of 120 years •
 - Fully insured work •
 - Free Quotes and advice •



If you do have any questions please do not hesitate to contact us:

Tel: 01279 876 673 • Email: chill@chillsbodyworks.com • www.chillsbodyworks.com

Changing your home without planning permission

Most building work requires planning permission.

However, some work can be done through 'permitted development' rights granted under the Town and Country Planning (General Permitted Development Order) (England) 2015.

Work carried out under permitted development must conform to specified criteria. It is wise to check with the local authority before carrying out the works or have a qualified surveyor confirm that they are in order.

Chelmsford City Council has a 'planning portal' explaining what work is allowed under permitted development. For a fee, there is a planning advice service for help with specific queries. You can also apply for a Lawful Development Certificate to confirm that your work does not need planning permission.

Some of your permitted development rights may have been removed by the local authority under an 'Article 4' direction. Article 4 directions are made when the character of an area of acknowledged importance would be threatened. They are most common in conservation areas and you probably already know if your property is affected, but it may be worth checking this with Chelmsford City Council.

The permitted development rights applicable to many common projects for houses do not apply to flats, maisonettes or other buildings. Similarly, commercial properties have different permitted development rights to dwellings.

Whilst most homes benefit from permitted development rights, any space added by past owners since 1948 will count towards your permitted development allocation. In other words, you do not get a fresh allocation upon purchasing a property.

Furthermore, if you plan to demolish and build a replacement dwelling larger than the existing house, it is likely that your permitted development rights will be restricted on condition of granting planning permission.

Under the rules, the pre-1948 rear wall of a detached home can be extended, subject to the neighbour consultation scheme, by up to 8m in depth with a single-storey extension. This is reduced to 6m if you live in a semi or terrace. Please note that these allowances will reduce when the Larger Home Extension Scheme ends on 30 May 2019. A single-storey rear extension must be no higher than 4m. This is reduced to 3m where the extension will be within 2m of a boundary.

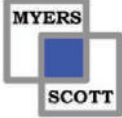
Double-storey extensions may be no higher than the house. An extension can project up to 3m from the original rear wall, so long as it is at least 7m from the rear boundary. No extension can project beyond or be added to the front of the house or an elevation which affronts the highway.

With the exception of conservatories, new extensions must be built of materials 'similar in appearance' and with the same roof pitch as the main house. You can also convert your loft into a bedroom or extra living space by up to 50m³ in a detached house, or by 40m³ within any other home, but you will need permission to add a dormer window on any roof elevation which faces the highway.

You cannot cover more than 50% of the land around your house with extensions (including extensions by previous owners), and you have to include any outbuildings when calculating this coverage.

The above is for general interest only and does not constitute legal advice. Always seek qualified legal advice where appropriate to do so.

Andrew Thorpe-Apps
FRSA, Solicitor.



www.myersscott.co.uk

TECHNOLOGY SUPPORT
EST.2004

Services offered:

- Technology Support for home and business
- PCs and Laptops supplied and repaired, wireless and wired networks, Apple repairs.
- Website design build and maintain
- Portable appliance testing
- Photo, film and cine film scanning and digitizing
- CCTV camera installation

Contact:
Myers Scott Ltd
01245 362197

COOPER KEYS CUTTING EDGE

- Keys cut to pattern, number
- Locks supplied
- Car keys / Remote Programming
- Classic car key and lock specialists
- DIY • Tools • Hardware • Decorating
- Electrical • Gardening



01245 251399
cooperkeys@live.co.uk

5 The Parade Woodhall Road, Chelmsford, Essex CM1 4BA

D.S. EAGLE

High-class family butcher

**Prime quality beef, pork,
lamb and poultry plus
home-made sausages
and burgers**



ALL ENGLISH MEAT

We specialise in home-cured gammon hams and bacon, produced on the premises in the traditional way. Come and visit our shop and meet our qualified, experienced and friendly staff for helpful advice - you'll be very welcome.

01245 420516 07810 712765
9 Wellfield, Writtle, Chelmsford, CM1 3LF

www.eaglebutchers.co.uk



Plumbing and Heating services at affordable and competitive prices, call today for a free quote.

**Boilers
Bathrooms
Drainage
Heating
Kitchens**

f O.R Plumbing & Heating
t 01245 440320 | 07512 541652

www.orplumbingandheating.com



GENERAL CLEANING COMPANY

Established 1947

Regular Service

Town and Country Districts

**Office
Windows
Industrial
Commercial
Wasp Control
Reach and Wash**

**Solar Panels
Builders Cleans
Fascias and Gutter
Cleaning
Tradition Window
Cleaning**

Sworders, Pleshey, Chelmsford, Essex CM3 1HU
Tel: 01245 231535 • Mob: 07889 393866

A & W Gowers Limited
Manufactures & Installers of Bespoke Joinery
(01245) 362737



Experienced professionals specialising in bespoke staircases, conservatories, windows, doors and all types of fitted furniture



Please contact us for personal expertise and service



info@awgowers.co.uk • www.awgowers.co.uk
No. 4, The Grange, Warners Farm, Howe Street,
Great Waltham, Chelmsford, Essex CM3 1JN

Notification of Chelmsford Park & Ride Consultation

Essex County Council is reviewing the ticketing options and fares offered and days of opening for the Chelmsford Park and Ride Services.

This consultation gives you the opportunity to let them know your views about the proposals.

The consultation opened 21 January and will run until March 22nd 2019, it is available online at: www.essex.gov.uk/Chelmsford-Park-and-Ride

Paper copies of the questionnaire are available from the Sandon and Chelmer Valley Park and Ride sites, or by emailing: passenger.transport@essex.gov.uk.

The consultation proposes the below:

- Raise the child ticket age from 16 to 18.
- A discounted ticket offer when tickets are purchased digitally through an app (12 tickets for the price of 11).
- Closure of Chelmer Valley Park and Ride on Saturdays. Sandon would remain open for customers wishing to use Park and Ride and would run on a loop route around the city centre.
- Remove the ticket machines on site, cash fares will be allowed to be taken on bus.
- An inflationary fare increase.

If you have any queries, please contact passenger.transport@essex.gov.uk.

Local Highways Panel

I am delighted to have been elected to represent parish councils on Chelmsford City Council Local Highways Panel. A first for me and for the Chelmsford City panel to have a parish representative.

They consider and prioritise minor road improvement jobs throughout the city district and monitor 106 money.

- traffic management improvements
- tackling congestion
- safer roads
- public rights of way improvements
- cycling schemes

It was my intention to listen for the first few meetings but with the 2019-2020 budget set at only £500k, something needs to change to deliver more schemes and keep the roads safe.

Highway Rangers (HR) and Direct Delivery Gangs (DDG) are employed by ECC and seem effective at getting smaller jobs done but these come with restrictions.

I have suggested that if a Local Highways Panel inspector were employed, HR, DDG and perhaps even parish volunteers could help with schemes without compromising standards. It seems to have been well received so fingers crossed that this proposal will be adopted.

If you have any suggestions about how to stretch small budgets I would love to hear them. Please email me at: bpcwendy@gmail.com

The current and proposed schemes can be found here, along with minutes and agendas.

Wendy Daden

Parish Representative for CCC LHP

Pot Shop




Garden Centre & Pet Supplies

- Plants
- Wild Bird Care
- Bark
- Solar Lights
- Garden Equipment
- Décor
- Furniture

Farm Shop

- Fresh Fruit and Veg
- Fresh Daily Bread
- Local Potatoes
- Free Range Eggs
- Cakes
- Jams & Pickles
- Cookware
- Crisps & Snacks

Open 7 days a week
01245 465 895

 Pot Shop Garden Centre




Flowers By Candice
Florist and Gift Shop
Flowers & Gifts for
All Occasions Order
Online, By Phone, In
Store & Facebook



www.flowersbycandice.co.uk
01245 460 600
 Flowers By Candice

Damases Lane Boreham, Chelmsford, CM3 3AL

The Leather Bottle



Grade II-listed village pub with two rooms

- Perfect for children • Outdoor seating •
- Walk-ins welcome •
- Street parking available •
- Food served from 12 till 3pm •
- 3 changing cask ales •
- Quiz night the last Monday of every month from 7:30pm •
- St Patrick day Sunday 17th March Guinness £3 per pint & large Jamesons £3.50 •
- Every bank holiday Monday live entertainment and BBQ with hog roast from 3pm •



The Leather Bottle Pleshey

The Street, Cm3 1HG • 01245 237291



- Manufacturers And Installers
- Celebrating 17 Years Of Trading
- Friendly, Professional Staff
- High Security Products
- 10 Year Guarantee

TRITEC
WINDOWS Ltd

- Doors •
- Windows •
- Lantern Roofs •
- Conservatories •
- Bi-Folding Doors •
- Composite Doors •



Tel: 01245 248066
Email: sales@tritecwindows.co.uk
Website: www.tritecwindows.co.uk

Broomfield Library

Winter and early Spring have as always been a busy time at Broomfield Library.

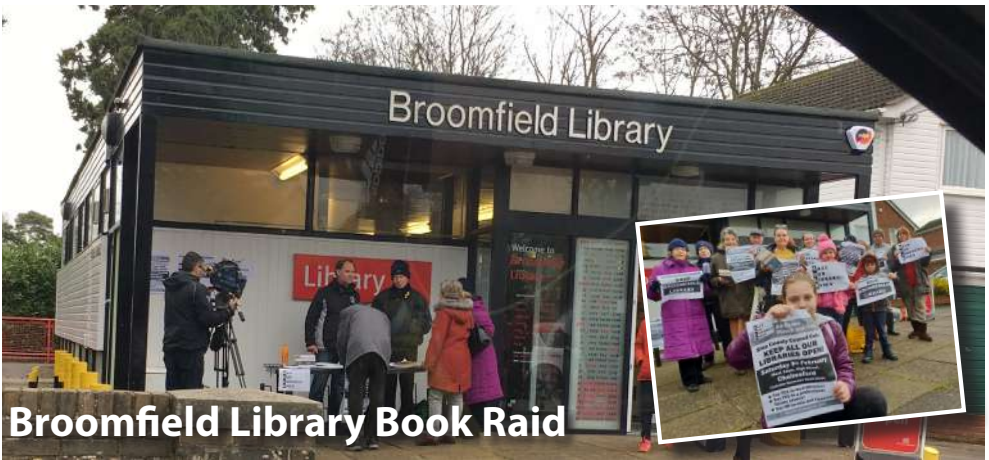


To round off our Christmas celebrations we were pleased to welcome the Reverend Julie Hardy from St Mary with St Leonard, who led our final Baby and Toddler Time session of the year with a telling of the Christmas Story.

Parents, children and staff all then joined in with some songs and carols, accompanied by a few instruments. Rhyme Time continues to be held every Wednesday from 10-10:30am, and we also invite our younger friends to stay and play on a Thursday from 1:15pm. The Spring half term holidays saw Peter Rabbit and friends join us in the library for books and craft activities including a rabbit mask and some peas in a pod.

On Wednesday 10th April we will be holding our Spring Holidays event 'Wild Woods', which will celebrate the 30th anniversary of We're Going on a Bear Hunt by Michael Rosen.

Children of all ages will be welcome to drop in for a bear hunt and join in other activities in the library. Please come in and ask staff for more details. The Board and Card games group is held every second Monday of the month from 2pm. All are welcome to join in a variety of games, and hot and cold drinks are provided.



Broomfield Library Book Raid

Campaigners protesting against the proposed closing of Broomfield Library organised a book raid on Saturday 26th January to generate publicity and raise awareness.

Around 100 residents supported the campaign, most of them by removing up to 14 books each. Book raids have been held in other libraries in the county with hundreds of users taking part at the likes of Hockley and Prettygate in Colchester.

Angela Thomson

Broomfield Library

What has Broomfield Library ever done for us?



Well, the list is a long one.

It has books lots of them, for children from 0 to 18, and for grown-ups – novels, cook books, travel, biographies. Large print & audio books too for those who can't see so well or prefer to listen to a story. There is an issue desk & a self-issue machine. All you need is your Essex Libraries card and you don't need ID to join.

There are newspapers & magazines, CDs, DVDs & free wifi with 4 PCs to look up information or type up a report or homework and print it off or photocopy articles or personal documents.

Several book groups meet in the free meeting room at the back of the building. The library can order multiple copies of books for them. If you can't find the book you really want to read because it is out on loan or you need for your work or studies then you can reserve it free of charge or get a member of staff to do it for £1. If no other Essex Library has what you want, then it can be ordered from another library outside of Essex for a fee.

The library can get copies of language courses, play sets or musical scores for your group.

On the 2nd Monday of the month, you can play board & card games from 2pm when the library is open 1-5pm.

Especially for babies & toddlers every school term time Wednesday 10-10.30am there is a rhymetime & every Thursday 1.15-2.15pm stay & play.

On the 4th Saturday, there is a Block builders construction club 4 sat 10-11.30am.

Broomfield Library is also the place to go for recycling bags & to dispose of expired batteries.

There is also a collection point for the local food bank and the library exists as a safe community space where you can go and find something to do or just sit quietly with a book, so yes the list is a very long one.

Angela Thomson

A poster for a church event titled "PEOPLE & STONE". The text on the poster includes: "Broomfield Parish Church", "PEOPLE & STONE", "The Life of Broomfield Church", "The 3rd of a series of Talks & Tours to raise funds to restore the Spire", "Church Materials -", "A Deep History in Walls", "by Ian & Ros Mercer, GeoEssex", "Saturday 27th April", "Tickets £3 from the Church or email Trudy trudy_stevens@outlook.com", "2pm", "More to follow including Broomfield Artists, Historians and Saxon Princess", "Raffle & Refreshments", "Spire Fund". The background of the poster features a drawing of a church spire.

St. Mary's Church Spire – Fundraiser



The Way of Saint James – Part Two

Well it's the New Year so time to get into walking mode, after all in a couple of months time I'll be on my way. The walking side of things is not a problem as countryside walks and walks into Chelmsford provide the necessary practice of walking on all surfaces. Essex isn't noted for it's hills so a little more help in this direction might be useful.

In the meantime I have been checking what equipment I may need. Other than the obvious items that might be considered as required for a walking "holiday" I have looked at the kit lists' provided by various companies specialising in the Camino and that of the Confraternity of St. James, who are responsible for the issue of 'Pilgrim Passports' (credencial) and the Pilgrim's Compestela. Every Pilgrim/walker along the Camino is required to have a specialist document/accreditation (Pilgrim Passport/ Credencial) which must be stamped at least once a day in the various villages that they pass (to ensure they have walked!).

Then once they reach the end of their journey in Santiago de Compostela this must be taken to the Pilgrim's Office in the Cathedral to receive the final stamp, at which point their Compostela will be issued. In medieval times the Compostela entitled the Pilgrim to remission of sins and/or time spent in purgatory.

These days it is confirmation of finalising/ completing the journey or pilgrimage.

The word 'Pilgrim' has tended to be associated with someone who goes on a journey for, or with, a religious or spiritual purpose. It is in fact derived from the Latin peregrinus, a cross-country country walker, a wayfarer. And thus could apply to any of us who walk.

In years past the typical pilgrim to Santiago took a cloak, a stout staff (to assist in the walk and to fend off wild animals and robbers) and a gourd in which to collect drinking water. Galicia, the Spanish Region in which Santiago lies, is green and lush – it is known for it's rain so even today a waterproof cape is a necessity.

The 'kit' lists provided by the various organisations above make interesting reading; sleeping bag, sheet for sleeping bag, pillow case and plastic sheet or bin bag - the first as some hostels do not provide blankets and the last three as the beds "may not be as clean as one would wish"(?) What have I let myself in for? How did those first pilgrims survive? Many in fact did not and to die whilst walking gave you a direct entry to Heaven, with remission of sins – according to the early church!

I have also been reading some of the accounts of those who have travelled the Way. Paulo Coelho in his (somewhat fictitious) account errs on the mystical. René Freund and his wife relate the characters, as well some of the tribulations, that they met on the way. Tim Moore in his travels with his donkey, Shinto, is not dissimilar - indeed at times it seems as though Tim met

some of the same individuals as René. All agree it is a life changing experience. As for earlier Pilgrim's they had the "Liber Sancti Jacobi/ Codex Calixinus" written in 1137 to offer advice - travel in large groups, don't trust anyone, beware thieves, footpads and highwaymen and don't forget the wolves, bears and foreigners!! Whatever else may happen my travels will certainly be interesting to say the least - bedbugs, lack of hygiene and europhobes permitting.

The reason I'm doing this is to raise funds for the Church Spire Appeal. If you wish to sponsor me/support the Church Spire Appeal please visit Justgiving.com and look for **Macscamino**. My thanks to those who have already given or promised support.

Malcolm Taylor

St Mary with St Leonard's Church Services

St Mary with St Leonard's Church has lots of services and special events coming up, taking place in either the church or the hall :

- 3 March Family Service 10.30am** ~ suitable for all ages
- Sunday Special 3-4pm** ~ Craft, story, film clip/puppets, and food - fun for all the family.
- 6 March Ash Wednesday** ~ (start of Lent) – **service at 10 am**.
- 10 March Concert 3- 4pm** ~ The Chelmsford Festival of Music and Drama Winners. Tickets cost £5 *
- 15 March Quiz Night 7.30pm** ~ get a team together or come and join in. Tickets cost £5 *
- 31 March Mothers' Day 8am** ~ Holy Eucharist • **10.30am Family Service** - suitable for all ages
- 14 April Sunday Special 3-4pm** ~ Craft, story, film clip/puppets, and food - fun for all the family.
- 15-17 April Holy Week Reflections 7-8pm** ~ these are contemplative
- 18 April Maundy Thursday 7pm** ~ Eucharist with washing of feet
- 19 April Good Friday 10 am** ~ Service (see website for details) Reflection on the cross 2-3pm in church
- 21 April Easter Day 8am** ~ Holy Communion 10.30am Family Eucharist 5.30pm Evening Prayer
- 27 April People & Stone Lecture 2pm** ~ Tickets cost £5 *
- 5 May Family Service 10.30am** ~ suitable for all ages
- 7 May Flower Arranging Course** ~ open to anyone who wants to learn to create flower arrangements. 3 week course - 7-9pm *
- 12 May Sunday Special 3-4pm** ~ Craft, story, film clip/puppets, and food - fun for all the family.
- 18 May May Fayre** ~ outside on Church Green (see website for details)

In addition to all of this, we have a monthly Film & Lunch group, a Lunch & Laughter group, as well as Edward Bear and Little Lambs which meet regularly.

* Please look at our website www.stmarybroomfield.org for more information and our Facebook page St. Mary Broomfield or contact Revd Julie Hardy on **01245 443565** for more information.

Obituaries

Neville Catley

1934-2018

Popularly known as "Skip", Neville Catley was tragically killed in a road traffic accident outside his home in November last year.

He was born in Sible Hedingham in 1934 and the Catley family moved to Broomfield in 1939 where Neville attended Broomfield Primary School. His father was in the RAF during the war and his mother ran the Broomfield Women's Land Army Hostel.

In 1941 he started his long association with the Broomfield Scout Group by joining the cub pack. When a German parachute mine fell in the churchyard in 1943 Neville with other cubs and scouts lent a hand in the clean-up so that a wedding could take place in spite of there being a damaged roof and no windows above the altar. And it was from an old building on Church Green near the Kings Arms pub that he and others regularly pulled their handcarts around the village collecting waste paper and jam jars for the war effort. He became a scout and then a senior scout; an assistant cub master and a scout instructor with the Broomfield Scout Group. He also wrote the Group newsletter called "Scribble". In spite of being called up for national service in the RAF in 1952, he regularly returned home on leave to help run the scouts. On leaving the RAF Neville worked for Marconi in Chelmsford and later moved to Croydon airport and Stanmore with the company.

In 1955, he met Ann who was working at Lloyds Bank in Chelmsford and they were married in 1959 and had two sons, Geoffrey and Stephen. In 1971 he moved back to Chelmsford with Marconi and later started his own public relations consultancy.



When his two sons joined the Cubs in the mid-1970s, Neville again offered his services to the Broomfield Scout Group as both a cub and a scout leader. Then in 1977 he started an Air Venture Scout unit at Broomfield called Pegasus. He regularly took the venture scouts parascending and flying at RAF Wattisham where he forged strong and lasting links with 56 Squadron based there. He was a qualified parascending instructor and on the scout air activities committee. In fact he was a member of many local organisations and committees from the Great Waltham twinning with Ceyrat to historic vehicles; lunch clubs; gardening and model making groups.

His interests were wide ranging including aircraft and flying; motor sport; gardening; model making; coin collecting etc. In fact he was an avid collector of almost anything that interested him. He was also an enthusiastic campaigner for many local good causes including, ironically, road safety particularly along Main Road and around Broomfield Hospital.

Described as a true gentleman with the principles of a time gone by, in reality, Neville was something of an enigma. Nevertheless, he was one of Broomfield's personalities who made life richer for those he came in contact with and we are all the poorer for his loss.

Roger Cole

Wood Automotive

Excellence in Vehicle Maintenance Since 1994



The mechanical services we offer include:

- 🔧 MOT's
- 🔧 Tyre Replacement
- 🔧 Vehicle Diagnostics
- 🔧 Clutches
- 🔧 Vehicle Servicing
- 🔧 Tyre Repair
- 🔧 Air Conditioning Repair
- 🔧 Welding
- 🔧 ... And much more

WE
OFFER
COURTESY
CARS!

Web: www.woodautomotive.co.uk

Tel: 01245 361 180

Unit 1 Walthambury Farm, Pleshey Road
Great Waltham, Chelmsford CM3 1AZ

WANTED

CARS & VANS

- ✓ GUARANTEED INSTANT PAYMENT
- ✓ SAME DAY COLLECTION
- ✓ ALL VEHICLES CONSIDERED
- ✓ ENVIRONMENT AGENCY REGISTERED



UP TO £400
PAID FOR
SCRAP
VEHICLES

07956 880667 • 01621 851392
www.scrapcarsessex.co.uk



fairstead electrical

Domestic • Commercial
New Build • Rewires
Extensions & additions
Garden lighting • Fault finding
Testing and certification
Fully insured • NICEIC registered
Power & Lighting

Call us on

07557 684723 or 01245 233282

email alex@fairstadelectrical.co.uk

www.fairstadelectrical.co.uk

Andy Hayward
Driving Instructor

Grade A
Discount for Block Booking

01245 231 561

07988 517 027

hayward221@btinternet.com



CRYSTAL CLEAN

MOBILE WHEEL
REFURBISHMENT & VALETING

07889 919165

01245 237751



BENCHMARK
TREE SERVICES

TREE SERVICES TAILORED
TO YOUR REQUIREMENTS

Based in Chelmsford, with over 20 years of experience, Benchmark Tree Services are the company to call for first class tree work in Chelmsford, throughout Essex and the surrounding area.

No job is too big or too small for the talented team of tree care specialists at Benchmark Tree Services in Chelmsford. We always go the extra mile for you. If the council need to be contacted and permissions arranged, we'll take care of it.

✉ s.whelton@bopenworld.com

🌐 www.benchmarklandscapeltltd.co.uk

- Tree surgery
- Tree health surveys
- Air spading
- Tree and woodland planting
- Tree and woodland maintenance
- Site clearances

☎ **0808 250 7946**

CP CONSTRUCTION PLANT
CS COMPETENCE SCHEME



THINKING OF A NEW PATIO?

VIEW OUR RANGE ONLINE OR VISIT
OUR NEW SHOWROOM

CHANDLER
www.chandlermaterials.co.uk

01245 352650
91 Widford Rd,
Chelmsford, CM2 8SY
Suppliers of quality building
materials to the trade & public

BUILDERS' MERCHANTS NEWS
BMN
awards
WINNER

**INDEPENDENT
BUILDERS
MERCHANT
OF THE YEAR**

Has Your Double Glazing Steamed Up?

Established for over a decade Cloudy2Clear windows have become a leading company for glass replacement. Issues with double glazing can often be gradual and may only be noticed during a clear sunny day or during the winter. A failed glass unit may no longer provide you with the protection you need or be energy efficient. Why not spend a few minutes checking your home to see if you have any failed double glazing? If you act now you can avoid these problems.

Now, you may think you need to replace the

whole window including the frames and all the hardware, however Cloudy2Clear have come up with a simple and cost saving solution... Just replace the glass!!

If you see condensation in your windows just visit our website or give us a call on **0800 61 21 118**. We will send out our highly experienced engineers for a free no obligation quote. A **Cloudy2Clear quote takes on average no longer than 20 minutes**. Once the quote is completed, we will sit down with you and explain the problem and tell you how we can fix it.

With years of experience Cloudy2Clear have a wealth of knowledge and are recognised as a Which Trusted Trader, **plus our work is backed by an industry leading 25 year guarantee.**

Cloudy2Clear also replace faulty locks handles and hinges on all windows and doors.

Your friendly local Cloudy2Clear specialist is Chris Miller and he services the Broomfield & Chelmsford areas.

So, if your windows are steamed up, broken or damaged give Chris a call for a free quotation on **0800 61 21 118**.

“Cloudy2Clear GUARANTEE All Customers That An Average Quote Will Take No Longer Than 20 MINS!!!”



Cloudy2Clear Windows... Service With A Smile!

Cloudy2Clear Are A...



Which? Trusted Trader

All Glazing Backed By Our

25 YEAR GUARANTEE



**Priority Freephone
0800 61 21 118
www.cloudy2clear.com**

Broken Or Damaged Windows? Faulty Locks, Handles, Hinges?





Your Local Independent,
Family Owned, Funeral Directors
“Allow Our Family to Care for Yours”



**5★ Google
Reviews**

*Ample Client
Parking at Rear
of Premises*

Call Paul or Cheryl on 01245 377077 for friendly advice or simply pop in for a chat. Let us help you arrange the perfect funeral for your individual family's needs, within our purpose-built and relaxed environment – located on Hospital Approach, Broomfield.

“ We randomly chose Secure Haven to handle my father's funeral literally because we do not live locally and they were nearby to Broomfield Hospital where my father died. However, they were the perfect choice and they managed everything superbly, were very courteous and approachable, full of information regarding the process and what we were required to do and recommended an excellent celebrant. They were very open and honest about their pricing structure and overall we would highly recommend Secure Haven. Thank you, Steve B. ”

Find out more at www.securehaven.co.uk

01245 377077 • 07436 531884

No.1 Hospital Approach, Broomfield, Chelmsford, Essex, CM1 7FA.