

# *Broomfield* **TIMES**

Issue 61 | Spring 2020

*News & events from your Parish Council*





EAT . DRINK . CELEBRATE



# SUNDAY LUNCH?

*Three Courses:*  
£26.95

*Includes coffee/tea  
and chocolates*

Our Sunday Lunch Menu includes traditional home cooked roasts such as Roast Scotch Sirloin of Beef, Rack of Pork and Chicken Breast, each served with all the trimmings!

To book your table call: **01245 440 005**

[www.channelsestate.co.uk](http://www.channelsestate.co.uk)

- . *Fresh homemade dishes*
- . *Locally sourced ingredients*
- . *Beautiful restaurant views*



**Channels**, Pratts Farm Lane East  
Little Waltham, Chelmsford CM3 3PT



**CHANNELS**

— *Bar & Brasserie* —

# Broomfield TIMES

Happy New Year and welcome to the Spring edition of Broomfield Times; the first edition in 2020 and first edition for myself as Editor. A big THANK YOU to Selina Matthews who has been the Editor for the past 6 years & is a very hard act to follow! Here she is receiving some well-earned flowers from the Parish Council Chairman John Barnes and Karen Hurrell.

It is 15 years since the first ever edition of Broomfield Times was published which celebrated 110 years of Broomfield Parish Council – where has that time gone! I shall be looking back at Broomfield Bulletins; Broomfield Booklets and earlier editions of Broomfield Times and reprint some interesting articles about Broomfield past. This edition brings you news and reports on many activities that have been/will be taking



place – it is nice to see many Clubs/Groups/Societies active in the Village and it is especially rewarding to read about a young man who has spent many hours collecting litter around the Village – well done Sam! You may be particularly interested to read Councillor Blake's article on the proposed Bloor development on land north of Woodhouse Lane.



Please submit any news/articles/memories/photos/comments you would like to make or share with our readers – please send to me at Broomfield Parish Council Office, (inside Broomfield Village Hall) 158 Main Road, Broomfield CM1 7AH or email: [editor@broomfieldessex.co.uk](mailto:editor@broomfieldessex.co.uk)

**Karen Hurrell**

Cover photo:  
*Spring on Angel Green by Stuart Jones*

**TO ADVERTISE  
PLEASE CALL  
01843 269513**

Published by  
**Community Ad Web Ltd**  
**01843 834160**

email [info@communityad.co.uk](mailto:info@communityad.co.uk)  
web [www.communityad.co.uk](http://www.communityad.co.uk)



Supporting the  
**REBUILD OF BRITAIN**



The views expressed in any published content are solely those of the contributors. The Publishers accept no responsibility for the accuracy of any information contained in the publication. The contents of this magazine including images may not be copied, reproduced, distributed, downloaded or displayed in any form or by any means without the prior written permission of Community Ad Web Ltd. Unless otherwise specified, the authors of the literary and artistic works in the pages in this magazine have asserted their moral right pursuant to Section 77 of the Copyright Designs and Patents Act 1988 to be identified as the author of those works. The Publishers reserve the right not to publish a submission or part of a submission that they consider defamatory or otherwise inappropriate for publication. CommunityAd wishes to advise all readers that it does not endorse or recommend any products or services contained herein. CommunityAd does not, therefore, take any legal responsibility for the advice given by any of the advertisers.

## COOPER KEYS CUTTING EDGE

- Keys cut to pattern, number
- Locks supplied
- Car keys / Remote Programming
- Classic car key and lock specialists
- DIY • Tools • Hardware • Decorating
- Electrical • Gardening

**01245 251399**  
[cooperkeys@live.co.uk](mailto:cooperkeys@live.co.uk)

5 The Parade Woodhall Road, Chelmsford, Essex CM1 4BA



**LEN'S LAWNMOWERS  
& Garden Machinery Services**

**Your one-stop shop for garden machinery**

**Over 100 machines on display**

Unit 16 Reeds Farm

(off main Roxwell Road)

**Mower servicing & repair**

A1060, Roxwell, Writtle

**Collection & delivery**

Chelmsford CM1 3ST

**FREE with a service**

**OPEN 6 DAYS A WEEK**  
(subject to seasonal change)

[www.lens-lawnmowers.co.uk](http://www.lens-lawnmowers.co.uk) **01245 422571**

Main dealer & stockist for **HAYTER**

Main agents for **Moulinex** **MOTAX** **ALDO**  
We also stock **QUALCAST** **ARCO** **STIGA**

## Broomfield Contacts

### Parish Councillors

**John Barnes** *Chairman*

**Ros Mercer** *Vice Chairman*

*& Village Hall Charity*

**John Blake** *Planning Committee*

**John Barnes** *Finance & General Purposes*

**David Howell** | **Angela Thomson** | **Sue Hubble**

**Wendy Daden** | **Les Steed** | **Angela Faulds**

**Roy Perry** | **Monika McKie**

**Mike Letch** *Clerk*

**Karen Hurrell** *Assistant Clerk (Planning)*

**Wendy Martin** *Assistant Clerk (Village*

*Amenities)*

Parish Office, 158 Main Road, Broomfield, CM1 7AH

☎ 01245 441660

✉ [clerk@broomfieldessex.co.uk](mailto:clerk@broomfieldessex.co.uk)

*Parish Councillors can be contacted through the Parish Office Mon, Weds & Fri 10.30am - 12.30pm (answer machine available out of office hours)*

### City Councillors

**Barry Knight** ☎ 01245 420045

✉ [gbr.knight@chelmsford.gov.uk](mailto:gbr.knight@chelmsford.gov.uk)

**Wendy Daden**

✉ [wendy.daden@chelmsford.gov.uk](mailto:wendy.daden@chelmsford.gov.uk)

**Mike Steel**

✉ [mike.steel@chelmsford.gov.uk](mailto:mike.steel@chelmsford.gov.uk)

### County Councillors

**John Aldridge** 33 East View, Writtle, CM1 3NN

☎ 01245 421524

✉ [cllr.john.aldridge@essex.gov.uk](mailto:cllr.john.aldridge@essex.gov.uk)

### MP

**Kemi Badenoch MP**

**[kemi.badenoch.mp@parliament.uk](mailto:kemi.badenoch.mp@parliament.uk)**

**020 7219 1943**

Kemi holds regular surgeries across the constituency however due to the size of the constituency, the next surgery appointment may not be at a convenient location. You can find out when Kemi's next surgery is on her website. If you have an urgent issue, or do not need a face-to-face appointment please contact Kemi on the details above. If you would like to find out more about what Kemi is up to in Broomfield and across the constituency you can sign up to her monthly newsletter by visiting **[www.kemibadenoch.org.uk](http://www.kemibadenoch.org.uk)** and filling in 'get email updates'.

### Police

Contact for PCSOs:

Non-emergency number 101

Or via website **[www.essex.police.uk](http://www.essex.police.uk)**

Emergency 999

Contact: **[www.essex.police.uk/do-it-online/report-a-crime](http://www.essex.police.uk/do-it-online/report-a-crime)** OR Non-emergency number **101** or **01245 491 491**

Chelmsford Crime Prevention Team: email: **[chelmsfordcpt@essex.pnn.uk](mailto:chelmsfordcpt@essex.pnn.uk)**

### Editorial Committee

**Editor. Karen Hurrell**

**Cllr. John Barnes**

**Cllr. Daden**

**Cllr. Mercer**

Whilst Broomfield Times is supported by the Broomfield Parish Council, the views expressed within it are not necessarily those of the council. Please note that the Parish Council do not recommend or vet advertisers.

### Contributions

Contributions to future editions are welcome, please email:

**[editor@broomfieldessex.co.uk](mailto:editor@broomfieldessex.co.uk)**

or send a hard copy to:

The Editor c/o

The Parish Office

158 Main Road

Broomfield, CM1 7AH

☎ **01245 441660**

Articles accompanied by photographs are particularly welcome. Please send either professional prints or email full-size JPG files.

### Copy Dates

- Copy for the Summer issue 14/5/2020.

### General Notes

- Please refer any play area problems or incidents to the Parish Office.
- Cardboard & Paper Sacks ONLY are available from the Parish Office.



# FROST WINDOWS

We offer a personal touch & customer support with over 30 years of experience.

- Residential & Commercial Repairs
- Window & Door Locks
- Child Locks
- Hinges & Handles
- Sealed Units



For quotes, advice & any general enquiries please get in touch:

**01245 259121**  
**07850 315054**  
[info@frostwindows.co.uk](mailto:info@frostwindows.co.uk)  
[www.frostwindows.co.uk](http://www.frostwindows.co.uk)



## Essex Ovencleaners

Odour-free, eco-friendly domestic oven cleaning that will have your appliance looking as good as new and **ready to use straight away!**

We clean all kinds of appliances:

- Oven Cleaning
- Hob & Extractor Cleaning
- Microwave Cleaning
- BBQ Cleaning
- Range Oven Cleaning
- Fridge Freezer Cleaning
- Aga Cleaning
- Dishwasher Cleaning



Trading Standards Approved



All Staff are DBS Checked



Safe & Friendly cleaning process



Use your appliance straight away

[info@essexovencleaners.co.uk](mailto:info@essexovencleaners.co.uk)

t 01245 451 003 m 07816 762 869

[www.essexovencleaners.co.uk](http://www.essexovencleaners.co.uk)



We are a local Construction Company Providing:

- Resin Bound Driveways
- Patios • Block Paving etc

Free no obligation quotations to Essex and surrounding areas

Tel: **01245 472511**  
 E: [info@resinbound-driveways.co.uk](mailto:info@resinbound-driveways.co.uk)  
 W: [www.resinbound-driveways.co.uk](http://www.resinbound-driveways.co.uk)

## GENERAL CLEANING COMPANY

*Established 1947*

**Regular Service**  
 Town and Country Districts

<p><b>Office</b>                  Windows                  Industrial                  Commercial                  Wasp Control                  Reach and Wash</p>	<p><b>Solar Panels</b>                  Builders Cleans                  Fascias and Gutter                  Cleaning                  Traditional Window                  Cleaning</p>
---	---

Sworders, Pleshey, Chelmsford, Essex CM3 1HU  
 Tel: 01245 231535 • Mob: 07889 393866



### Best Foot Forward

EMMA YOUNG MCFHP MAFHP  
 FOOT HEALTH PROFESSIONAL

Foot treatments include..  
 Nail Cutting · Nail Filing · Corns  
 Callus/Hard Skin · Nail Care  
 Fungal/Thickened Nails · Verrucae  
 General Foot & Athlete's Foot  
 Dressing & Paddings · Diabetic Foot



Also Distinction Qualified in Reflexology MBSR  
 For further enquiries please call  
 Emma: 07785923873

## P SMITH

**PLUMBING & HEATING**

- BOILER SERVICES
- BOILER BREAKDOWNS
- FULL INSTALLATIONS
- SYSTEM UPGRADES
- PART L ENERGY EFFICIENT
- UNDER FLOOR HEATING
- LANDLORD REPORTS



**07801 817443**  
**01245 521127**  
[smith-paul104@sky.com](mailto:smith-paul104@sky.com)

[www.psmithplumbingandheating.co.uk](http://www.psmithplumbingandheating.co.uk)  
 9 Redmayne Drive, Chelmsford CM2 9XF

## Chairman's Chat



**Rather than my usual letter, I thought it would be helpful to answer some of the questions I have been asked over the last few months.**

As you may know, we still have some vacancies on the Council, so I thought I would start with the most basic question of all.

### **How do I become councillor? What does it involve, and what do I get out of it?**

Anyone over eighteen who lives or works in or within three miles of the parish can become a councillor. There are no qualifications, all you need is an interest in your community and a desire to improve it. Everybody brings something personal to the Council; some like getting involved in the planning issues, others like working out how the money should be spent. Some prefer to be more practical and enjoy taking part in litter picks or helping with coffee morning.

You won't be paid, but you can claim out-of-pocket expenses. The main reward is making a contribution to your community.

### **Can an individual councillor speak for the parish?**

No. A Councillor's job is to find out what other people think, so when they go to the meeting they are informed about what you need. For this reason alone, a Councillor has to be very careful when commenting on social media. Everyone is entitled to their own opinion, and even when we speak for ourselves, people will know we are Councillors. The funny thing is that while people don't tend to believe a word we say in a formal press release, an offhand comment on Facebook will be taken as truth, especially if it makes someone else look awkward.

### **What about some of the controversial matters?**

#### **What happened to the Doctor's surgery at the village hall?**

That was a very speculative enquiry from a local practice who asked if they could look at the site when they started thinking about relocation.

The Council got a report telling them of the discussion but for some reason, this was interpreted as a done deal and some people got upset that they were not consulted on the matter. We have since heard that the Surgery will be moving elsewhere, which is more or less what we expected.

### **Facebook has been very angry about the Council's approach to Angel Pavilion, what would you say to your critics?**

The Parish Council is responsible for the safety of people using Angel Field and the Children's Play Park. Even though the site is not owned by the Council, we still have to remember that people can break into it and injure themselves.

If any work is to be done on the site, it can only be done by crossing the playing field and that could mean closing the children's play area and closing or protecting the football pitch while the contractors are on site. Before this can happen, we have to know that all the health and safety rules are being followed and that it will not adversely affect any of the users.

In a wider sense, the Parish Council looks after the land on your behalf, and it cannot give-away land or rights of access without making very sure that your long term interests are protected and you are not making a gift of public property to a private profit-making business. Access to the land does have a value it may be financial or it may be civic – depending on what the site will be used for.

### **Finally, and on a more positive note. Can the Council award Grants?**

Yes. Any not-for-profit organisation club or group that contributes something to the community can apply for a grant to help with their work. You can find the application form on the website, please get in touch and ask for some money!

If you have any questions of your own, let me know and I will answer it in the next issue.

**Councillor John Barnes**

# Pot Shop Garden Centre

& Pet Supplies

Plants • Wild Bird Care  
Bark • Solar Lights  
Garden Equipment • Décor  
Furniture

Open 7 days a week  
01245 465 895

 Pot Shop Garden Centre



*Flowers By Candice*  
Florist and Gift Shop  
Flowers & Gifts for  
All Occasions Order  
Online, By Phone, In  
Store & Facebook



[www.flowersbycandice.co.uk](http://www.flowersbycandice.co.uk)  
01245 460 600

 Flowers By Candice

Damases Lane Boreham, Chelmsford, CM3 3AL

# BROOMFIELD OPTICIANS

- Professional local eye care
- Bespoke service
- Over 20 years experience as a qualified Optometrist
- Proud to provide that individual attention to detail
- Friendliest caring team in Chelmsford

Call now to make an appointment with Louise

**Mr Anish Chauhan, Optometrist**  
24 Broomfield Road  
Chelmsford, Essex CM1 1SW

**T 01245 352803**  
[www.broomfieldopticians.co.uk](http://www.broomfieldopticians.co.uk)



**Richard Watters**  
Plumbing and  
heating engineer

**RGW INSTALLATIONS**<sup>td.</sup>  
Plumbing and Heating Specialists

**M 07758 252 707**  
**T 01245 200 591**



**W** [rgwinstallations.com](http://rgwinstallations.com)  
**E** [richard@rgwinstallations.com](mailto:richard@rgwinstallations.com)

41 Peggotty Close, Chelmsford, CM1 4XU

## STEVEN REEVE

### DULUX SELECT DECORATOR

Interior ~ Exterior Painting & Decorating  
Wallpapering & Ceramic Tiling

Tel: **01245 441526** Mobile: **07710 295831**  
Email: [stevenreeve1@yahoo.co.uk](mailto:stevenreeve1@yahoo.co.uk)

High Quality Workmanship  
Full Public Liability ~ Free Estimates  
Recommended & Guaranteed by Dulux  
Established 1987



DOWNLOAD OUR NEW APP FROM THE APP STORE TODAY!

CHELMSFORD'S PREMIER TAXI COMPANY  
**FAREWAY** | 355 555

## New Parish Councillors

**At the November full Parish Council Meeting Roy Perry and Monika McKie were co-opted as Parish Councillors:**



**Councillor Monika McKie**

“I have lived in Broomfield for just over two years now but have had strong connections through work and family living here. I am a carer for my family and have strong military

connections within, as such education, disability and Veterans issues are very much close to my heart. For these reasons I am very strongly involved with the plans for the library and I am organising the commemorations for VE75 in May with the help of the British legion and Broomfield Parish Church.

I hope to join the Village Amenities and Village Hall Committees. I believe the activities these provide our community are great and should continue to improve and offer a variety of inclusive opportunity for all, as well as reduce isolation in our communities. A variety of individuals with different skills, ages and opinions are needed on the Parish Council to have all the different voices and groups in our community represented and their needs met by the Council which is why I joined and hope that more people will be inspired to join this challenging but rewarding position.”



**Councillor Roy Perry**

“My interests are walking and I am a member of The Broomfield Footpath Society and U3A walking group, and also keen to help with the up keep of the local

footpaths. I also belong to The Walnut Club a support group for fellow prostate cancer sufferers which meets at Broomfield Hospital. Swimming is another past time and I take full advantage of being over 60 and resident in Chelmsford.

I like to think that Parish councils exist to promote the happiness of the people in those spheres where individual effort is less effective than collective effort and that you can have more influence on the inside.”

**LKG Daughters**  
Plumbing and Heating Engineers Ltd

**safe member REGISTER 199191**

**City & Guilds Qualified**

*From a tap to a full bathroom*

**01245 478111**  
**07710 358347**

**Boiler Renewals & Repairs**  
**Central Heating & Repairs**  
**Bathroom Suite Installations**  
**Pumps & Port Valves**  
**Taps, Ball Valves, etc**  
**All Work Guaranteed**  
**Female & Male Engineers**

**Local family business established 1997**

**24hr emergency service**

**www.lkgdaughtersplumbing.co.uk**





## WESTDRIVE BRAINTREE THE UK'S LARGEST INDEPENDENT KIA DEALER

Whether you are looking for a new or used car, Westdrive Kia has the car to fit your needs along with expert advice and services you would expect from a Kia dealership.

To find out more drop in to see us or give us a call. Our full range is also available online. Contact us to find out how our specialist team can help you today.



The Power to Surprise

**Westdrive**

Galleys Corner, Braintree,  
CM77 8GA  
[www.westdrive.co.uk](http://www.westdrive.co.uk)  
01376 767750



Scan our QR code  
now to view our  
current offers.

## 'North of Broomfield' – 450 more houses

### **Bloor Homes have carried out the first stage of consultation about their new development 'north of Broomfield':**

Thank you to all residents who have contacted us, come to a Planning Committee meeting and/or attended the Bloor Homes consultation in the Village Hall in January. For those that haven't been able to, here are some of the questions we've been asked and the answers.

#### **Where is it?**

As you can see on the map, the development site is on the north side of Woodhouse Lane and the Hospital site. It's west of Blasford Hill (B1008) and east of the KEGS playing field, partly in Broomfield Parish and partly in Little Waltham.

#### **Is it where they're building houses now, on Hospital Approach?**

No, that's a different smaller development by Countryside Properties.

#### **What are Bloor Homes proposing?**

450 dwellings, a neighbourhood centre and a new access road into Broomfield Hospital. However, the current masterplan shows the road stopping short of the Hospital site. At the moment, the proposed neighbourhood centre is likely to be a daycare nursery and a building with multifunctional community rooms and workspaces.

#### **Won't that make the traffic in Broomfield worse?**

On the plus side, a new access road into the Hospital site should help to ease congestion on Hospital Approach and the adjoining roads, as it would offer an alternative route to the Hospital for people coming from the north. But a development of this size is likely to make congestion worse overall, especially in the centre and southern parts of the village. Broomfield Parish Council had a professional traffic study carried out. This suggested that traffic through the village would increase by 8-10% at peak times. However, that assumes the new Hospital access road is built. If not,

the traffic would be worse. Also, it's been suggested that the new road would be limited to certain traffic (e.g. staff, deliveries) and that would reduce its effectiveness in relieving traffic on Hospital Approach and adjoining roads.

To read the Parish Council's traffic study, go to: [www.broomfieldessex.co.uk](http://www.broomfieldessex.co.uk) click on Chelmsford Local plan and then click on The Transport Report.

#### **Where would children go to school and how would people get to the doctor?**

Children would be allocated primary school places at Little Waltham or Broomfield and secondary places at Chelmer Valley. Primary school places are one reason why the new development has been limited to 450 homes. Similarly, it is not big enough to support a whole new GP surgery, so the health authorities would have to work with existing surgeries to provide enough capacity.

#### **What has the Parish Council been doing so far?**

Working with residents and neighbouring parish councils, the Parish Council has succeeded in getting the planned number of dwellings reduced from 1,500, first to 800 and then down to 450. Originally, there was a danger that 1,500 houses would be built in the countryside all-round the Hospital. We believe this would have eventually led to all the countryside between Broomfield and Newlands Spring being built on.

So, on the positive side, the Parish Council has succeeded in reducing the development and the resulting traffic problems. We have also made sure that the City Council planners and the developers are aware of our forthcoming Neighbourhood Plan, including the views that residents expressed in the Plan Questionnaire in 2017 about the types of housing they would find more/less acceptable.

#### **Can this 'North of Broomfield' development be stopped?**

It's highly unlikely. That's because this site is included in the forthcoming Chelmsford City Local Plan, which sets out where new

development will take place between now and 2036. The Local Plan has now completed most of its stages, included an 'examination' by an independent inspector. Although she is forcing Chelmsford to make some changes to the new Local Plan, all the signs are that these won't affect the 'north of Broomfield' development (despite the Parish Council putting up a strong case against it, based on traffic). We will know for definite when her final report is published – that's due anytime now.

**This consultation is about the 'masterplan' for the site. What does that mean?**

All big sites in the Local Plan must have a masterplan. The masterplan sets out the general layout of the roads, housing blocks and any facilities (including green space). It doesn't go into detail about the design or type of houses. Those will be the subject of more detailed planning applications later and there will be more consultation about each of those. However, this masterplan consultation is important because, once the masterplan is

agreed, the basic layout will be finalised and it will guide all the later stages.

**What does the Parish Council think?**

Although we've had some success in reducing the size of the development and influencing other aspects (e.g. the significant amount of green space), we still have two main concerns:

1. The new access road into the Hospital must be completed. Also, its use mustn't be restricted in a way that limits its effectiveness in reducing traffic in Hospital Approach and adjoining roads.
2. We want to establish a strong, wooded green buffer on the north and west sides of the site where it adjoins the open countryside. This would screen development from the higher land to the west and the existing homes on Woodhouse Lane and Partridge Green. It would also create attractive walks and a wildlife corridor from Puddings Wood towards Sparrowhawk Wood (to the north of the site).



[www.flatpackready.co.uk](http://www.flatpackready.co.uk)

**John Nicholson**  
 Carpenter  
 Painting & Decorating  
 Handyman  
 Flat Pack Assembly  
 Door Hung  
 And More...

**07597 851000**  
**flatpackready@gmail.com**



**Pleshey Tree Services** Friendly, professional service  
 Free quotations & advice  
 Pruning & Shaping  
 Felling & Removing  
 Planting & Advice

Tree Surgeons & Arborists

**01245 362988**  
[www.plesheytreeservices.com](http://www.plesheytreeservices.com)  
[tomcrees@plesheytreeservices.co.uk](mailto:tomcrees@plesheytreeservices.co.uk)


NPTC qualified | Council approved | Work compliant to BS3998 & BS5837 | Fully insured



**MAKE YOUR WILL !**  
**...IN THE COMFORT OF YOUR OWN HOME...**

*Do you and your family have the peace of mind of an up-to-date Will, or a Power of Attorney for yourself or your parents, or Legal Guardians for your children under 18 ?*


My professional Will Writing and Power of Attorney services are offered **7 days a week** on a **fixed fee** basis **in your own home**, regardless of consultation time and number of visits



**MARTIN ENGLEMAN**  
 AIPW AFPC DipPPS Certs CII (MP & ER)

**Qualified Member of the Institute of Professional Will Writers**

*Please visit [www.businessadvisoressex.co.uk/](http://www.businessadvisoressex.co.uk/) for information on Wills or Powers of Attorney, then call for a fixed fee quotation and free advice*

 **01268 761022 / 07901 948745**

1 Nesbit Close Wickford Essex SS12 0PT

**ENGLEMAN WILLS & POWERS OF ATTORNEY**

Also, before we reach the detailed planning applications, we also want to make sure that our residents' views about housing are taken on board, as revealed in the 2017 Neighbourhood Plan Questionnaire. These include:

- Small family homes, affordable (rented or shared equity) starter homes, homes for the active retired and bungalows are preferable to large executive homes
- New buildings should have a traditional rather than modernist design
- New houses should generally be built in small groups of around 25 homes max (a bit like the cul-de-sacs seen in some parts of the village).

### How can I find out more information?

Have a look at the following websites and keep an eye on them for future information:  
Bloor Homes:

[www.broomfieldconsultation.co.uk](http://www.broomfieldconsultation.co.uk)

Chelmsford City Council:

[www.chelmsford.gov.uk](http://www.chelmsford.gov.uk) and type  
**20/0001/MAS** into the search bar

Parish Council: [www.broomfieldessex.co.uk](http://www.broomfieldessex.co.uk)

### What happens next?

By the time you read this in Broomfield Times, the masterplan consultation will be over. The City Council planners and the developers Bloor Homes will be sifting through the comments and hopefully taking them on board.

At Broomfield Parish Council, we'll continue to do everything we can to make 'north of Broomfield' as acceptable as possible for existing residents and as attractive as possible for all residents, both new and old.

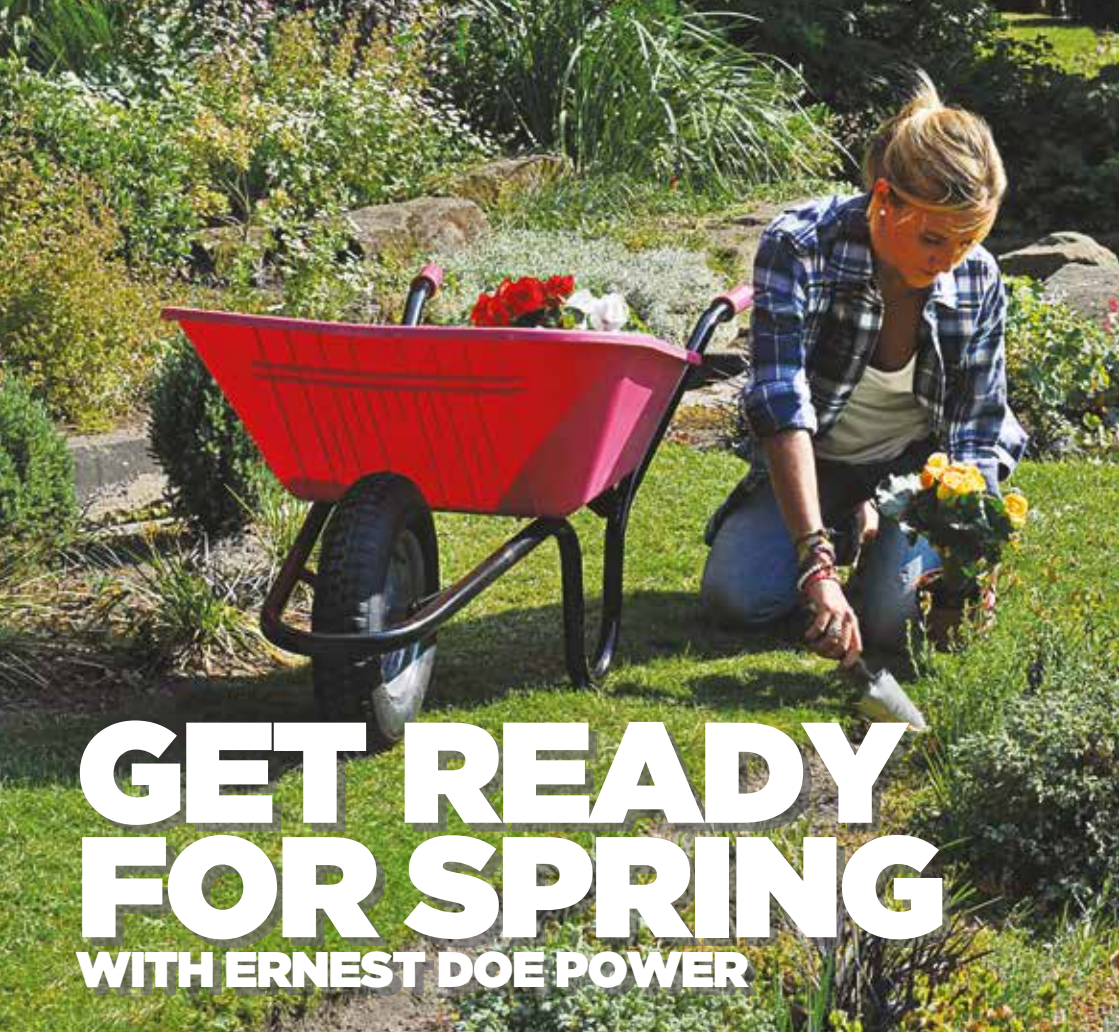
Please feel free to contact us at the Parish Office or by e-mailing **planning@broomfieldessex.co.uk** if you have any comments, concerns or questions.

**John Blake**

*Chair of the Planning Committee*







# GET READY FOR SPRING

WITH ERNEST DOE POWER



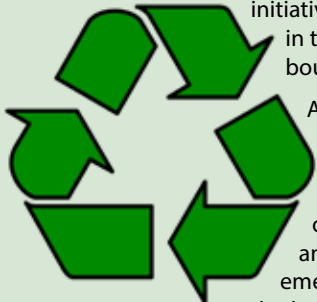
**FYFIELD**  
**Ongar, CM5 0NS**  
**Tel: 01277 899464**

 **ernestDOEpower**  
*Where you buy with confidence*

## Changes to recycling bags

**Unfortunately, the Parish Office will no longer be able to supply parishioners with Dog Waste Bags or Plastic Recycling Bags from now on.**

This decision has been passed down from Chelmsford City Council who are exploring initiatives to cut waste in their geographical boundaries.



A city spokesman said: "In response to the Council's declaration of a climate and ecological emergency, we have looked at areas where

we can reduce single-use plastics in the organisation.

"A decision has been made to no longer issue additional recycling sacks and dog waste bags from outposts such as libraries, council buildings and at our Recycling Roadshows with immediate effect."

"By reducing the number of plastic bags being issued, we hope this will encourage residents to use the bags to their full capacity.

"The council will continue to deliver recycling sacks to residents annually and residents requiring additional sacks can buy them from local supermarkets."

## New bin installed next to bus shelter at Brassie Wood on the new Channels development

The Parish Council have installed a new bin at the request of parishioners in this new area of Broomfield.



Is your  body perfect?

**DENT REPAIR FROM ONLY £55!**

For a quote or further information  
call Paul on **07779 090572**  
or email **info@diamonddents.co.uk**



[www.diamonddents.co.uk](http://www.diamonddents.co.uk)

## Prestons Garages



A familiar and popular name in the area, Prestons has firmly established itself, with 100 years of business as of 2019, as one of the leading independent motor dealers located in the Chelmsford area.

Skoda aftersales & SsangYong main dealership. Looking after your aftersales needs, service, MOT and repairs.



**Prestons Garages**  
Sales & Filling Station  
2-4 Lordship Road,  
Writtle CM1 3EH  
Tel: 01245 420262

[www.prestonsgarages.co.uk](http://www.prestonsgarages.co.uk)





**WINTER SPECIAL OFFER**  
**10% DISCOUNT ON ALL INSTALLATIONS**  
(CODE NO. DAN04)

VISIT OUR  
ON-LINE  
SHOP

**CALL NOW TO BOOK YOUR FREE ESTIMATE**  
**Tel: 01376 502020**  
**WWW.DANBURYFENCING.COM**



## Broomfield Now and then...

Can you guess where these photos were taken?

Interesting images produced by  
Stuart Jones, Broomfield's Village  
Attendant.



**Pakwaan**  
INDIAN PUNJABI CUISINE

1 Bridge Street, Writtle, Chelmsford,  
CM1 3EY 01245 422 891  
[www.pakwaan.co.uk](http://www.pakwaan.co.uk)

## From the County Council



### Switching off duplicate street lights to save CO2

Many of you may have noticed that there are a number of street lights that are not working. In most cases this is because they are awaiting an upgrade to LED lamps. Total replacement of the old sodium lamps (which are no longer

being manufactured) will take a little while yet. In the meantime, Essex Highways is taking action to switch off some duplicate street lights that illuminate the same area and where they perform no useful function and waste energy. This move will not greatly reduce light or affect safety but will ensure we are doing all we can to reduce carbon emissions, helping The Council's commitment to mitigate climate change. Safety will not be compromised. If you have a problem with street lights use the Report It tool on [www.essexhighways.org/transport-and-roads/tell-us/report-street-lights.aspx](http://www.essexhighways.org/transport-and-roads/tell-us/report-street-lights.aspx)

### All STEAMed up

Have you heard about Essex 2020 – a Year of Science and Creativity? Inspired by the British Science Festival it is coming to Essex for the first time in almost 200 years and is set to be the County's biggest celebration of Science, Technology, Engineering, Arts and Mathematics (STEAM) ever.

Now is the chance for businesses, schools, community groups and individuals to be part of the Essex 2020 programme. Whether you have an arts, tech or science event underway or are keen to bring an idea to fruition – the County Council would love to hear from you. Please go on line to [www.essex2020.com/](http://www.essex2020.com/)

### The Essex Lottery

This month celebrates the two-year anniversary of the Essex Lottery. So far it has raised over £150,000 to good causes across the County such as Chelmsford Community Radio, Kids Inspire, Friends of Columbus School

and College, Open Road and many others. For full details & a chance to win visit [www.essexlottery.co.uk](http://www.essexlottery.co.uk)

### Essex Highways wins award for employing serving and former Forces Personnel

Essex County Council's partner in Essex Highways, Ringway Jacobs, has achieved the Armed Forces Covenant Silver Award for employing serving and former members of the Armed Forces. Essex Highways employs 8 ex-Regulars and 4 Reservists and under the Armed Forces Covenant will look to offer other opportunities to former members of the Armed Forces.

If you have any problems about County Council matters please let me know on; **01245 421524** or email; [cllr.john.aldridge@essex.gov.uk](mailto:cllr.john.aldridge@essex.gov.uk).

**Councillor John Aldridge**

**BLIXES FARM SHOP**  
Est: 1920 • **HUMPHREYS & SONS** • Est: 1920  
TRADITIONAL WHOLESALE BUTCHERS

- Home Produced Beef
- Homemade Sausages & Burgers
- Roasting Meats & more...

Treat yourself at our **cash** counter;

- Homemade Pies
- FRESH Bread, Pastries & Cakes  
(All Made Daily)

And much more!  
Come and see for yourself!

Open 7:30am - 5pm (Mon-Fri) & 7am-12noon (Sat)

Blixes Farm • Ranks Green • Fairstead • Chelmsford • Essex • CM3 2BH

**Tel: 01245 361 214**  
f /CHumphreysandSons



## Chelmsford City Council



**The resident parking due to be adopted in Broomhall Road, Jubilee Avenue and Church Avenue will be from 10-11am and 2-3pm; no extension to this time can be made without a new application.**

There is a joint ECC and CCC initiative to reduce plastic

pollution -many of you have noticed the reduction in plastic sacks provided by CCC, to one per week and you can no longer obtain more. Staff feel strongly that the misuse of bags must be addressed, along with the 80% of sea litter which comes from the land - a third of fish caught in the English Channel for human consumption now contain small pieces of plastic.

From April 1st the Neighbour Notification for Planning Applications will be received via IT system or e-mail only. Approximately 12,400 letters are sent every year with many discarded as junk mail which is an unnecessary expense. For details of how to register for the planning mailing list or for a fuller explanation please contact me.

Providing homes for the hundreds of families on the Chelmsford waiting list remains a challenge. The Policy Board are recommending purchasing 20 existing homes, to alleviate expensive rental costs for temporary accommodation. The policy board also intend using CCC owned sites for 100% affordable housing to provide social rental properties. Some of these sites are currently in the Local Plan (due to be adopted March 2020).The council also intend exploring additional sites.

A couple of Grayson Perry's works are currently displayed at Chelmsford Museum. You have until the end of 2020 to view these works by one of Britain's most-loved artists.

This year 3foot People festival will include an extra day and take place from Tuesday 30 June to Friday 3 July. Sadly, the FLING festival will take a break but will return in 2021

### **Cllr Wendy Daden**

*Representing Broomfield and the Walthams, Chelmsford City Council*

To advertise please call  
01843 269513

**MICROMEND**  
COMPUTER SOLUTIONS,  
REPAIR & MAINTENANCE  
**NO FIX • NO FEE**

**Computer Problems?**

**COMPUTER RUNNING SLOW? CRASHING?  
OR JUST GIVING YOU PROBLEMS?**

All PCs and laptops | Apple Macintosh iPads, iPhones  
Android | Internet problems | Virus removal |Upgrades  
Replacements | Install custom-built Windows PCs  
Child safety | CRB Registered

**Microsoft**  
CERTIFIED  
IT Professional

**No call-out fee, free advice**  
For more information on our services visit  
[www.micro-mend.co.uk](http://www.micro-mend.co.uk) | email: [glen@micro-mend.co.uk](mailto:glen@micro-mend.co.uk)  
mobile 07788 925085 | office 01245 463330

# PLASTIC PLANET

In nature now

Over the last century, plastic has become part of everyday life. From bottles and bags to plastic pots, tubs and trays our lives are full of it. We're becoming a plastic planet. But we don't have to – if we reduce our consumption and recycle.

## The plastic problem

From the sea to the land, Earth is becoming a Plastic Planet. Most of the plastic waste in the UK doesn't actually end up in our oceans, but a lot is disposed of in our environment – burned or buried in landfill sites. We are leaving a legacy of plastic waste on our planet that will take years to put right.

# 79%

of the plastic waste ever created is still in our environment.

## Cutting down on single-use plastics

### CARRY A REUSABLE WATER BOTTLE

Download the 'Refill' app to access free tap water on the go



### USE YOUR OWN CUP

Many cafés in Chelmsford are offering discounts or rewards



### REMEMBER YOUR REUSABLE BAGS

Place them by the front door or leave them in the car



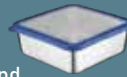
### SAY NO TO STRAWS

Alternatively, use your own metal or bamboo straw



### CARRY YOUR LUNCH IN A REUSABLE CONTAINER

and use a real knife and fork instead of plastic cutlery



### SHOP LOCAL

and choose loose items rather than those wrapped in plastic



## The recycling gap

# 42%

Despite a huge rise in recycling rates over the past few years, there is a big difference between what we are recycling and what we could be. We still only recycle 58% of our plastic bottles – that's a 42% gap. This is the recycling gap. We need to close it by recycling as much as we can.



# NORDIC TIMBER LTD

## TIMBER & FENCING SUPPLIER

### Decking

32mm x 140mm x 4.8m £10.00 per length  
32mm x 140mm x 3.6m £8.00 per length

### Treated Essex Board

Black 175mm x 4.8m £9.00 per length  
Brown 175mm x 4.8m £6.00 per length

### Green Treated Timber C24

100mm x 50mm x 4.8m £8.98 per length  
150mm x 50mm x 4.8m £14.02 per length

### New Sleepers — Brown / Green

240mm x 120mm x 2.4m £23.00  
200mm x 100mm x 2.4m £20.00

### Picket Fence Panels

6 x 3 £18.00

### Decorative Pickets

6 x 3 £15.00

### Bow Top Fence Panels

From £19.00

### Close Board Fence Panels

6 x 6 £21.00  
6 x 5 £20.00  
6 x 4 £19.00  
6 x 3 £18.00

### Feather Edge Gates

6 x 3 £35.00

### Fencing Ironmongery from Stock

Nails and Screws  
Joist and Jiffy Hangers

**SPECIALISTS IN FENCING, TRELIS, POSTS AND DECKING, GRADED TIMBER AND PLYWOOD**

**• CHEAPEST AROUND • PLEASE PHONE FOR A QUOTE •**

**Unit 1 Bulldog Works, Boars Tye Road, Silver End, Witham CM8 3QE**

**T: 01376 584902**

**Open: Monday to Friday 7:30am to 4:30pm & Saturday 8:00am to 12:30pm**

All Prices Subject to VAT

## Village Amenities Committee Report

### Allotments

Plots are now available to rent – please call the Parish Office (01245) 441660 or email Wendy at [deputyclerk@broomfieldessex.co.uk](mailto:deputyclerk@broomfieldessex.co.uk)

### Century Cup

This year's Century Cup was awarded to ESMEE COYLE. This Cup awarded by Broomfield Parish Council to a pupil at Broomfield Primary School who consistently displays the 6 R's (responsibility, resilience, respect, reflect, ready and resourceful) during 2019 – well done Esmee!

### Parish Paths Partnership (P3)

We are pleased to say that we now have a P3 co-ordinator who is looking for volunteers to join him on walks and carrying out small maintenance tasks. If this is something that you feel you would be interested in contact the office and we would be pleased to pass on your details.

### Broomfield Litter Pick

**Taking place from the Village Hall  
Saturday 28th March – 10.30 am**

Home-made cake, tea and coffee at 12 noon. All equipment provided. Children very welcome.

Look out for banner on Angel Green!

***Let's brighten up Broomfield!***



### Improvements for the Village

Broomfield in Bloom. We have three volunteers prepared to look after planters in various locations throughout the village but we would really love some more so if you live in a location where a planter could be placed and you would be prepared to water and care for the plants on a regular basis then please let the office know.

### Playground

The Village Amenities Committee members are looking into costs for replacing the safety surface in the play area along with replacing some pieces of equipment, a proposal will be put forward to the next Parish Council meeting.

### New Committee Members

The Committee welcomed Councillor Faulds.

#### **Councillor Les Steed**

*Chairman of Village Amenities Committee*



**fairstead  
electrical**

Domestic • Commercial  
New Build • Rewires  
Extensions & additions  
Garden lighting • Fault finding  
Solar PV and Off Grid  
Testing and certification  
Fully insured • NICEIC registered

Call us on  
**07557 684723**

email [alex@fairsteadelectrical.co.uk](mailto:alex@fairsteadelectrical.co.uk)  
[www.fairsteadelectrical.co.uk](http://www.fairsteadelectrical.co.uk)



## BROOMFIELD'S FOOTPATHS NEEDS YOU!



### Broomfield has a lovely network of footpaths and bridleways.

As of December and January, most parish paths are in very good shape, but missing or

broken way markers (as well as the amount of rain!) can make navigating some a little tricky and access to a couple is currently hampered by fallen trees.

We are looking to recruit a group of volunteers who could help maintain these Public Rights of Way, as part of Parish Pathways Partnership (P3) arrangements with Essex County Council (ECC).

Under P3, volunteers walk the paths over the course of the year, report any problems and can arrange or undertake any light maintenance that may be required, working with landowners and ECC.

If you are interested in helping out - be it on regular walks to check the paths or to undertake vegetation clearance, replace way markers or perhaps heavier tasks - please get in touch at [broomfieldp3@gmail.com](mailto:broomfieldp3@gmail.com). ECC can provide tools, training and equipment for volunteers and any time you could give, large or small, would be gratefully received!

**David Thomas**  
P3 Co-ordinator



## Highwood Landscapes & Purrfect Paving



**DON'T DELAY...CALL TODAY!**

### SPRING SPECIAL DEALS

- Trees • Pruning • Hedge Trimming • Roots Removed •
- Topping & Rotovating • Turfing • Fencing • Garden Design •
- Decking • Patios • Block Paving • Drives • Tar & Shingle •

#### PROPERTY MAINTENANCE

- Roofing • Chimney Repairs • Building Work •
- Flat Roofs • Guttering • Fascias & Soffits •

#### DRAINING SOLUTIONS SPECIALIST

**01245 422 804 | 07711 606 561**

**[www.highwoodlandscapes.co.uk](http://www.highwoodlandscapes.co.uk)**

Free written quotes & advice | 10 year guarantee on all work | 35 years of experience  
Unit 1, The Paddocks, Highwood, Chelmsford, CM1 3PU • email [info@highwoodlandscapes.co.uk](mailto:info@highwoodlandscapes.co.uk)

## Village Hall Report

**The Broomfield Village Hall Charity was founded in 1963 to take responsibility for the David Smith Memorial Field. The field had been purchased from the Chelmsford Brewery Company as a memorial to David Wade-Smith, a past chairman of the Broomfield Parish Council.**

For the first 48 years of its existence it was called the David Smith Memorial Charity and changed to its current name to more accurately reflect its current position. It owns the Village Hall, the car park, the MUGA and the field beyond down to Centenary Wood.

Its primary mission was to enhance the wellbeing of the people of Broomfield.

However, its parlous financial position achieved little scope for that.

The Parish Council had built a sports pavilion in the early seventies which grew to become known as Broomfield Community Centre. In 2009 a major refurbishing/rebuilding project was proposed and a business plan was drawn up. Following a full public consultation, the project was given the backing of the Parish Council and the community at large.

Planning permission was granted with many conditions. Due to the Hall's close proximity to the Main Road, one of the conditions was that the Charity provide 55 car parking spaces for hirers only at all times. As activities have expanded there is even more pressure to retain these spaces.

We now have approximately 50 regular hirers providing many varied activities and the Village Hall is a real hub for our Community.

Looking to the future the Charity will not only seek to preserve and protect its assets and services (as required by the Charity Commission Scheme under which it operates) but to enhance and improve its provision to our Community.

It will widen its scope of members to embrace other service providers in our Community and to continue its work – all this is undertaken by volunteers for the good of all.

Please see the Village Hall Timetable of regular hirers and the Village Diary and join in the activities.

**Trevor Jones**

*Chairman Village Hall Committee*



Weekly Timetable for Regular Sessions

Day	Monday		Tuesday		Wednesday		Thursday		Friday		Saturday		Sunday	
	Small	Large	Small	Large	Small	Large	Small	Large	Small	Large	Small	Large	Small	Large
08:00														
08:30														
09:00				09.15 - 10.15	09.15 - 10.15			09.15 - 10.15		09.15 - 10.15			08.30 - 09.30	
09:30		09.15 - 11.15	09.30 - 10.30	Shimmy 'n' Groove	Shimmy 'n' Groove			Shimmy 'n' Groove		09.30 - 10.30	09.45 - 10.30		Shimmy	
10:00		Stay 'n' Play under 5's	Yoga							Essex Stretch	Essex Bodies (with kids)			09.45 - 11.15
10:30	09.15 - 13.00							09.00 - 12.45						Karate
11:00	Sing and Sign				11.00 - 12.00			Lace Making					11.00 - 12.30	
11:30					Line Dance				11.00 - 12.30					
12:00									Yoga					
12:30														
13:00										12.30 - 13.30	10.30 - 16.00			
13:30										Shimmy 'n' Groove	Essex Dementia Care			
14:00														
14:30														
15:00														
15:30														
16:00														
16:30														
17:00														
17:30														
18:00														
18:30														
19:00														
19:30														
20:00														
20:30														
21:00														
21:30														
22:00														
22:30														

MUGA Timetable							
Day	Monday	Tuesday	Wednesday	Thursday	Friday	Saturday	Sunday
			17.00 - 18.00 U8s football coaching open to the public	17.00 - 18.00 U8s football coaching open to the public			
	18.45-19.75 PRIVATE HIRE						
	20.00 - 21.30 PRIVATE HIRE		19.00-21.00 PRIVATE HIRE	21.00-22.00 PRIVATE HIRE			
Key	Community Event			New sessions starting in...			

Please see contact details on our website: <http://broomfieldsex.co.uk/village-hall/>  
 It is advisable to make contact with the individual group before attending a session for the first time.

Last updated: 11/02/2020

Coffee Morning



Broomfield Village Hall 10-12 noon

Here are parishioners enjoying mugs of tea or coffee, toast, & biscuits & a chat at the village hall coffee morning on the 1st Wednesday of the month. On the odd months, Mar, May, Jul, Sep, Nov, Cheryl comes along as well with info & recycling bags for Chelmsford City Council

ALL WELCOME!

Angela Thomson



# C J Appliances

DOMESTIC APPLIANCE REPAIRS

**WASHING MACHINES  
 DISHWASHERS  
 ELECTRIC COOKERS/OVENS  
 TUMBLE DRYERS**

**07800 819502 • 01245 225472**

Now accepting card payments

## Village Diary

Various activities including Karate, Bingo, Bridge Club, Aerobics, Women's Institute, Carpet Bowls, slimming clubs and children's activities take place in the Broomfield Village Hall on a weekly basis - please telephone the Village Hall 01245 443902, email [bookings@broomfieldessex.co.uk](mailto:bookings@broomfieldessex.co.uk) or have a look on the website [www.broomfieldessex.co.uk](http://www.broomfieldessex.co.uk) where the village diary is also published, for more information.

### MARCH

- 2 Stay N Play**  
9.15am-11.15pm. Broomfield Village Hall  
Baby and toddler group for under 5's, parents and carers
- 4 Village Coffee Morning**  
10.00 – 12.00. Broomfield Village Hall. All welcome
- Orchard Springs W.I.**  
7.30 p.m. Broomfield Village Hall  
Lavenham, Dedham & the Cloth Trade – speaker Simon Gallop
- Property and Planning Committee**  
7.30 p.m. Broomfield Parish Office
- 9 Stay N Play**  
9.15-11.15 Broomfield Village Hall  
Baby and toddler group for under 5's, parents and carers
- 11 U3A**  
1.30 p.m. Broomfield Village Hall  
Musical Cabaret Peter Regelous
- Village Amenities Committee meeting**  
7.30 p.m. Broomfield Parish Office
- 16 Stay N Play**  
9.15-11.15. Broomfield Village Hall  
Baby and toddler group for under 5's, parents and carers
- 23 Stay N Play**  
9.15-11.15 Broomfield Village Hall  
Baby and toddler group for under 5's, parents and carers
- 25 Broomfield Cottage Gardeners' Society**  
7.15 for 7.30pm start. Broomfield Village Hall  
Gardeners' Question Time with Andrew, RHS Hyde Hall
- 30 Stay N Play**  
9.15-11.15 Broomfield Village Hall  
Baby and toddler group for under 5's, parents and carers

### APRIL

- 1 Village Coffee Morning**  
10.00 – 12.00 Broomfield Village Hall. All welcome
- 6 Orchard Springs W.I.**  
7.30 p.m. Broomfield Village Hall  
Writing for Entertainers – speaker Dave Dennison
- Property and Planning Committee**  
7.30 p.m. Broomfield Parish Office
- 8 U3A**  
1.30 p.m. Chelmer Valley High School  
My Life as a Wandsman in St Paul's Cathedral – Patrick Wilkins

### Village Amenities Committee meeting

7.30 p.m. Broomfield Parish Office

### 10 Good Friday

### 13 Easter Monday

### 15 Parish Council Meeting

7.30 – 9.30 Broomfield Village Hall

### 20 Stay N Play

9.15-11.15 Broomfield Village Hall  
Baby and toddler group for under 5's, parents and carers

### 27 Stay N Play

9.15-11.15 Broomfield Village Hall  
Baby and toddler group for under 5's, parents and carers

### MAY

### 4 Stay N Play

9.15-11.15 Broomfield Village Hall  
Baby and toddler group for under 5's, parents and carers

### 6 Village Coffee morning with

Mobile Customer Information Service  
10.00am – 12.00pm.  
Broomfield Village Hall. All welcome

### Orchard Springs W.I.

7.30 p.m. Broomfield Village Hall  
Annual Meeting & Resolutions with Shirley Perkins

### Property and Planning Committee

7.30 p.m. Broomfield Parish Office

### 11 Stay N Play

9.15-11.15 Broomfield Village Hall  
Baby and toddler group for under 5's, parents and carers

### 13 U3A

1.30 p.m. Broomfield Village Hall  
Suffragette & the Petticoat Rebellion – Lucy Allen

### Village Amenities Committee meeting

7.30 p.m. Broomfield Parish Office

### 17 Broomfield Cottage Gardeners' Society

10 am – 12noon  
Broomfield Allotment Site, Main Road  
Plant Sale

### 18 Stay N Play

9.15-11.15 Broomfield Village Hall  
Baby and toddler group for under 5's, parents and carers

### 20 Annual Council meeting

7.30 p.m. Broomfield Village Hall

### 27 Annual Parish meeting

7.30p.m. Broomfield Village Hall



## Broomfield Carpet Bowls Club

**This friendly club meets Monday afternoons from 13.30 until 16.30 and Thursday evenings from 19.00 until 22.00 in the Village Hall (behind the Angel pub).**

During the last year the club also played occasional friendly matches against other clubs - home and away. The overall result of the last seven matches was four wins and three losses, but all the matches were enjoyable social gatherings whatever the result.

We would welcome anyone who would like to come to join in with us and try their hand at playing carpet bowls. No experience necessary and no equipment is required. The first two trial sessions are free, so please come along to meet us at the Village hall at any of the session times shown above.



## Line Dancing in Broomfield Village Hall

**If you are interested in learning Beginners Line Dancing and would like some exercise to some great music, please come along to one of our friendly sociable classes.**

It's just for fun, we walk through the dance until we are all happy then we dance it - it's as simple as that plus a few laughs and a couple of drink breaks in between. If you would like to try it come along and watch or join in. For more details contact Susan on 07514086805.

Beginners Line Dancing Classes  
Every Monday Evening 8.30 - 9.30pm  
Every Tuesday Morning  
11.00 to 12.00  
£5 per class

*Susan Dore*



## Chelmsford Plumbing & Heating Ltd

- Reliable, family run business
- All calls answered personally
- Our charges are competitive, 100% clear and quoted in advance
- Boiler servicing, breakdowns and repairs
- New boilers and heating systems
- Gas, LPG, OIL, Warm Air
- Electrical work undertaken

**Call: 01245 478 588**

or visit: [www.cph.uk.net](http://www.cph.uk.net)



## BROOMFIELD FUN DAY SUNDAY 12th JULY 2020

**IT'S BACK!! The Broomfield Village Fun Day returns on Sunday 12th July 11.30am – 3.30pm.**

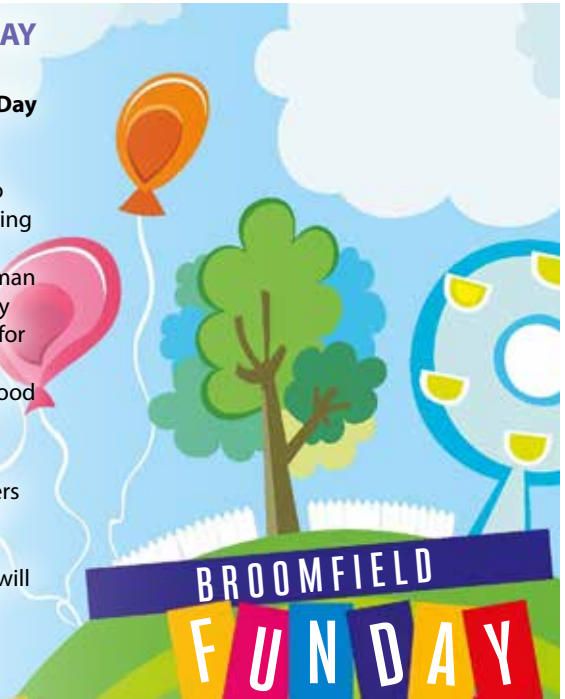
Dazza from Chelmsford Community Radio will be our Master of Ceremonies conducting music and laughter. There will be great attractions; Children's Fair, Inflatables, Human Fruit Machine, Smash the Rat, Coconut Shy and Crockery Smash. We are also hoping for Donkey Rides, Community Football and a Petting Zoo. There will be a full range of food and drink.

A great family day!

Want to help? We urgently need volunteers on the day, please contact the Village Hall Office on **01245 443902** or **bookings@broomfieldsex.co.uk** and your details will be passed on to the Fun Day Organisers.

**Trevor Jones**

*Chairman Village Hall Committee*



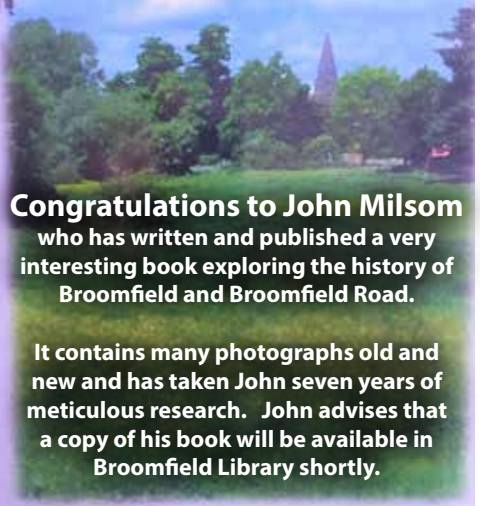
*COME AND JOIN GEMMA'S  
ZUMBA PARTY  
BROOMFIELD VILLAGE HALL  
EVERY MONDAY  
7:15-8:15 PM £5 PAYG*



*TEL:07917 458958  
EMAIL GEMKCHAPPELL@AOL-  
CO-UK  
FULLY QUALIFIED & INSURED  
FITNESS  
AND DANCE INSTRUCTOR*

### BROOMFIELD AND BROOMFIELD ROAD A NOTEBOOK

by  
John Milsom



**Congratulations to John Milsom**  
who has written and published a very  
interesting book exploring the history of  
Broomfield and Broomfield Road.

It contains many photographs old and  
new and has taken John seven years of  
meticulous research. John advises that  
a copy of his book will be available in  
Broomfield Library shortly.

## Activities and Interests with the U3A

**U3A stands for 'University of the Third Age', but the U3A isn't a university in the traditional sense.**



Instead, it offers opportunities for members to continue existing creative, educational and social interests, and to explore new ones. Members can do this in part through joining one or more special interest groups. At the Broomfield & District U3A there are over 20 such groups. If not quite from A – Z, they currently range from B (Badminton) to W (Walking), with lots in between including history, geology, ukulele playing, and handicrafts. To browse the full range of groups currently on offer, just visit the website, at <https://u3asites.org.uk/broomfield/home> and click on 'Groups'. If you'd like to get in touch with any of the group leaders for more information, just use the contact form on the web page.

The U3A also holds well-attended monthly meetings. These take place on the second Wednesday of each month at Broomfield Village Hall, and include book and puzzle swaps, refreshments, and a guest speaker.

In the past few months talks have included such diverse subjects as how DNA is used to catch criminals; one man's account of his solo walk across Africa; and what it's like to have been a BBC reporter. Topics in the next few months include 'Around the World in 33 Years and 7 Months', and 'The Suffragette and Petticoat Rebellion'. For a full list, have a look at the website and click on 'Events'. We hope to see you at a future meeting.

**Faith Marchal**



## Sing and Sign

**Sing and Sign has had a fabulous Spring term at Broomfield Village Hall and we can't wait to return after Easter to welcome yet more babies and toddlers to our classes.**



It is so lovely to now be an established group in the Broomfield community and can't thank you enough for your support and enthusiasm. We have bid a fond farewell to some of our older Sing and Signers and wish them well on their continued journey of communication and language development.

## Stay 'n' Play



**Mondays 9.15 to 11.15 am for Under 5s**

Village Hall, 158 Main Road, Broomfield CM1 7AH

£2.50 for one adult and up to two children 50p per extra child

Price includes Tea, Coffee, Juice, Toast and Biscuits



Many of our little ones are graduating to the next level and have lots of new songs and signs ahead of them; their amazing signing adventure has only just begun.

Sing and Sign is the original baby signing programme still going strong in its twenty first year. It is simple in its approach, drawing on the value of music to establish the building blocks of speech and language development, whilst nurturing a quite incredible connection between parent and baby.

With tunes and words that are easy to learn, you will soon be singing our songs in your sleep! What's more, you will be having so much fun with your little one, building on those natural gestures that they already have, to teach them a language that you can both understand.

We have three different levels of classes running for Babes (0-6mths), Stage 1 (6-18mths) and Stage 2 (15mths+) and it is never too late to start enjoying communication with your little one.

Summer Term bookings are very much open and booking fast. Remember that space is limited so we operate a first come, first served policy. If you have any questions please do get in touch and you can find us on Facebook too for all updates and offers.

We always welcome you to attend a class for FREE if space allows so that you can appreciate what everyone is talking about!

**[martinebrockman@singandsign.co.uk](mailto:martinebrockman@singandsign.co.uk)**

**[www.facebook.com/singsignessex](https://www.facebook.com/singsignessex)**

**[www.sasessex.co.uk](http://www.sasessex.co.uk)**

**[www.bookmyclass.co.uk/singandsign/?FID=76](http://www.bookmyclass.co.uk/singandsign/?FID=76)**



# D.S. EAGLE

High-class family butcher

**Prime quality beef, pork, lamb and poultry plus home-made sausages and burgers**



## ALL ENGLISH MEAT

We specialise in home-cured gammon hams and bacon, produced on the premises in the traditional way. Come and visit our shop and meet our qualified, experienced and friendly staff for helpful advice - you'll be very welcome.

**01245 420516    07810 712765**

9 Wellfield, Writtle, Chelmsford, CM1 3LF

[www.eaglebutchers.co.uk](http://www.eaglebutchers.co.uk)



Repairs & Spares • New Appliances  
Refurbished Goods

Same Day Repairs Available

**01245 258837**

[essexdomestic@gmail.com](mailto:essexdomestic@gmail.com)

## Able Property Maintenance

Your local reliable handy man with over 40 years' experience

**All work undertaken.  
We welcome all insurance work.**

Plastering  
Painting & Decorating  
Refurbishments  
Electrical  
Plumbing

**For a free, no obligation quote, call**

07870 849725 • [ableceilings@gmail.com](mailto:ableceilings@gmail.com)  
[www.ableceilings-chelmsford.co.uk](http://www.ableceilings-chelmsford.co.uk)

## Gary K. Steggall



- + Tree Surgery
- + Reductions
- + Felling
- + Hedge Trimming
- + Seasoned Logs
- + Site Clearance
- + Free Estimates
- + Fully Insured
- + **£5m Public Liability**

**07971 696375**

**01245 496758**

[garysteggall499@btinternet.com](mailto:garysteggall499@btinternet.com)



## The Wheatsheaf

Writtle

We offer a range of six ales on tap and two on gravity served straight from the cellar.

Excellent homemade food is served Tuesday to Saturday lunchtimes from 12pm - 3pm.

OPEN 7 DAYS A WEEK  
Mon-Thurs 11am-11.30pm;  
Fri-Sat 11am-12am; Sun 12pm-11pm



FIND US ONLINE AT  
[thewheatsheafwrittle.co.uk](http://thewheatsheafwrittle.co.uk)

CALL US ON  
**01245 420672**

EMAIL US AT  
[the.wheatsheaf.pub@btconnect.com](mailto:the.wheatsheaf.pub@btconnect.com)

VISIT US AT  
**70 The Green, Writtle, Chelmsford CM1 3DU**

## Broomfield Cricket Club news

**It's the close season, so very little to report here at Brooklands but with Spring and the new season approaching Club members are already looking forward.**

Underway already are our indoor winter net practice sessions for Juniors and Seniors. Held in the evening at the Skeggs Farm, Writtle Cricket Centre, there are sessions for Under 11 to Under 15's on a Friday and separately for Seniors. Please let me know if you are interested in joining us. The same applies for the outdoor season which will start late April/early May when once again we will be having coaching and matches for the Juniors and Saturday League cricket for the Seniors. New playing and non-playing members are always welcome. Contact me for further information.

**Tony Cowell**

*Club Chairman*

**tony.cowell1@btinternet.com**

## Broomfield Girls FC

**We regularly have over 70 girls from school year 1 to 8 training and playing games.**

The growth of girl's football has been phenomenal from young girls kicking a ball to live England ladies' games on national television - it's a brilliant way to make friends, get fit and excel at an all-inclusive sport. The girls play in mixed and girls only leagues all over Essex.

Broomfield run a FA backed scheme called 'Wildcats' which encourages girls from school year one upwards to come and try football - we have FA trained coaches looking after the girls and we aim to allow the girls to take football as high as they wish. Last year we had our first girl progress to the FA Regional Talent Centre, girls earning places at the SheCanPlay talent centre and the West Ham Academy.

But it's not all hard work we also had professional ladies footballers join us at training and the Club had over a hundred people go to Wembley for England ladies internationals, Ladies FA cup and West Ham vs Spurs at the Olympic stadium.

Have fun, make friends, play football!!!!

**Paul Goss**



*This is our smiley U11s!*



## Broomfield Cottage Gardeners' Society

### Evening Illustrated Talks

Our 2019/2020 season concludes on 25th March with a Gardeners' Question Time evening with Andrew, RHS Hyde Hall. This will be held in Broomfield Village Hall at 7:15pm for a 7:30pm start. Tickets are £3.50 for members or £4.50 for non-members. Refreshments are included. Ideally, questions should be submitted to a Committee member a couple of weeks before the evening although ad hoc questions will be taken.

### Charity Plant Sale

We will be holding a Charity Plant Sale on Sunday 17th May from 10am - 12.00 noon at The Barn on the Broomfield Allotments site. The entrance is between 149 & 151 Main Road. This is open to everyone, so please come along and select some plants or seedlings, both flower and vegetable, for your house, garden or allotment. Prices range from 25p to £1, so they are a fraction of garden centre prices. If you would like to donate some plants then please bring these along to The Barn on Friday 15th May between 2pm and 3pm. Proceeds from the sale will go towards our selected Charity for 2020.

### Summer Show

This year's Summer Flower & Produce Show will be held on Sunday 5th July in Broomfield Village Hall and will be open to the public from 2pm to 4.00pm. If you are interested in entering any of the classes, which include flowers, fruit & vegetables, floral & vegetable arrangements, cookery & preserves, photographs & handicrafts and children's classes, please contact our Show Secretaries, Selina Matthews on **01245 443108** or Christine Welch on **01245 355505** for a Schedule (which should be available early April).

### Barn News

We have a wide range of general gardening products on sale including a large array of seeds at 25% discount. Opening times are 2pm-3pm on Fridays and 10am-noon on Sundays. In order to benefit from the Barn, you will need to join the Society. Membership is £4.00 p/a, £3.00 p/a for Senior Citizens and is free for those under 16 years of age.

Membership can be obtained at The Barn at the Broomfield Allotments site or by calling our temporary Membership Secretary, Selina Matthews on **01245 443108**.

### Open Gardens

We hold Open Gardens evenings, laid on by members for members. These start in May usually with a visit to Nick Smith's Nursery and will be followed by Open Gardens evenings on the first and third Thursdays in June, July & August. If you are interested in opening your garden to members, please contact Dick Chapman on **01245 266508**. The full programme of visits will be available in the coming weeks.

### Website

Please visit our website, which provides information on the Society's activities, at **www.broomfieldcottagegardenerssociety.co.uk** and let us have any comments or suggestions. We also have a second website for users of mobile devices (smartphone or tablet), using the same address.

### Facebook Site

You can also find regular updates on our Facebook site at **www.facebook.com/groups/355859514864259/** or search under "Broomfield Cottage Gardeners Society".

### Philip Richards



Broomfield Cottage  
Gardeners' Society



## Charity Plant Sale Sunday 17th May

10am—12 noon

The Barn, between 149 & 151 Main Road

Come along to the sale to browse and buy from the wide selection of plants available.



### All Welcome



If you have any spare plants or seedlings please bring them along to the barn on either

Friday 15th May between 2 and 3 pm or on the day of the sale.

Our Charity for 2020 will be decided at the AGM on the 26th February

[www.broomfieldcottagegardenerssociety.co.uk](http://www.broomfieldcottagegardenerssociety.co.uk)



## Broomfield Footpath Society

**Our programme of walks for 2020 commence on Sunday 22nd March with a local walk around Long Shapley, Border Wood and New Barn Lane.**

We always meet at Church Green, Broomfield and lifts are available for those without cars. All are welcome and we have provided the approximate mileage of each walk below.

### Sunday evenings meet at 7:15pm.

**Mar 22**

Long Shapley – Border Wood – New Barn Lane. 4.3m. Cars to Broomfield

**Apr 5**

Broads Green - Fanners Green "Primrose Walk" 3.0m Cars to Broads Green

**Apr 19**

Sweeps Walk – Croxtons – Little Waltham 4.5m Cars to Broomfield

**May 3**

Danbury Common "Bluebell Walk" 3.0m. Cars to NT main car park

Contact – Stuart & Christine **01245 261102** or Pam & Gerry Fitch **01245 441021**

Follow us at:

[www.facebook.com/broomfieldfootpathsociety](https://www.facebook.com/broomfieldfootpathsociety) or [broomfieldessex.org](http://broomfieldessex.org)

### Wednesday afternoons meet at 2:15pm.

**May 13**

Broomfield "Buttercup Walk". 2.8m. Cars to Broomfield

**May 20**

The Queens Head, Boreham – Paper Mill Lock. 3.6m. Cars to Boreham

**May 27**

Leather Bottle, Pleshey. 2.9m. Cars to Pleshey

**June 3**

Writtle – Admirals Park. 3.5m Cars to Writtle, (Duck Pond)

**June 10**

Compasses, Little Green 3.5m Cars to Little Green (Duck Pond)



## 1st Broomfield (Kantankye) Cub Pack

**Making and cooking dough twists on a campfire, inventing their own games, visiting Clip & Climb, playing wide games in the dark, taking part in the Skreens Park Elf Hunt, making mincemeat then baking and eating over 100 mince pies, and a hut sleeper with a Christmas theme - some very strange parcels!**

And that's just the end of 2019. Straight into 2020 with an action packed top trumps evening, the Cubs attempted various activities to earn points to act as scores on their very own top trumps, they've also made vehicles to transport woggles across the hut floor and we've just returned from our first nights away experience of the year - an indoor camp at Belchamps with a Detective theme. Cubs had lots of fun exploring the site (especially those very muddy ditches!) and also did crate stacking, climbing, caving and our favourite, the assault course which was satisfyingly muddy this year... in between activities they also solved codes, collected clues, took fingerprints and examined evidence to unmask the gang of villains they were spending the weekend with (the Leader team!). What a fun weekend, still trying to get the mud out of my own kit...

We have a great group of kids at Cubs, it's an amazing experience being part of their achievements. We are still looking for more volunteers to join our Leader team so if you want to be a part of this, get in touch!

**Steff Smith**

*Akela 1st Broomfield (Kantankye) Cub Pack*



A.G & S SMITH BUTCHERS & HOGROAST  
SPECIALISTS

FAMILY BUTCHER

ANDREW SMITH  
PARTNER

TEL: 01245 467214 MOB: 07855408435

EMAIL: ANDREWSMITH143@BTINTERNET.COM

WEBSITE: WWW.HOGROASTED.CO.UK

ADDRESS: PLANTATION ROAD, BOREHAM, ESSEX



Local, fast, reliable and  
friendly ironing service.

24/48 hour service.

Can offer a collection and  
drop-off service.

Non-Smoking and Pet  
free environment.

Jo 07770 302504 or jo@ironingdiva.co.uk

www.ironingdiva.co.uk

## 1st Broomfield Scout Group

2019 saw Scouts in Essex celebrate 100 years since the establishment of the Essex Scout County.



As part of the celebrations Scouts were encouraged to participate in the "Essex Scout Centenary Challenge". The Challenge was aimed at enabling Scouts, across all sections (Beavers, Cubs, Scouts, Explorers and Network) and their Leaders to try out new activities and broaden their outlook. To complete their Centenary Challenge Scout Groups needed to complete 100 different activities from a choice of some 200, under the headings of - Essex, Adventure, Team, Travel, International, Creative, New experience, Outdoor, Inclusion and Community.

Members of the 1st Broomfield Group have already completed over 100 challenges; from eating 100 mince pies (easily accomplished at Christmas) to walking 100 miles. Under the "Community" heading was the challenge 'to plant 100 trees as a Group'. Coincidentally St. Mary's Church had received over 400 tree saplings from The Woodland Trust to plant around the newly consecrated churchyard extension. The saplings consisted of six varieties - hazel, Rowan, hawthorn, blackthorn, common oak and silver birch.



It was thus on a miserable November Saturday morning that members of the 1st Broomfield Scout Group, including Beavers, Cubs, Scouts, Explorers, Leaders, parents and supporters and members of the Churchyard Working Party commenced to plant 422 trees and the work was completed by early afternoon! All enjoyed refreshments in the Church Hall.

1st Broomfield hope to obtain further trees from The Woodland Trust to finalise the double hedge.

**Malcolm Taylor Chairman**

## Anyone know Ted?

**Communication in our day and age is so easy – at the flick of a thumb a typed message or a piece of video from a mobile phone can be sent whizzing around the world in a moment.**

How did we survive in the dark ages of the twentieth century or before? One way was to write a letter for as literacy improved through the nineteenth century more people had been taught to write and a comprehensive postal system meant that it was possibly, and reasonably cheap, to send a letter. The advent of the picture postcard opened up another front for communication – now you could send a brief message along with a view of where you were staying or had visited. There's nothing new about WhatsApp!

Long ago in 1986 Ken Searles published Broomfield in old picture postcards that featured 76 views of the parish, many of which were postcards collected from long-term residents. Quite a lot of the original photographs had been taken by Fred Spalding of Chelmsford and subsequently printed up as postcards for sale. We are very lucky that the Essex Record Office (ERO) saved the Spalding archive from destruction in the 1960s (there were three Fred Spalding's based in Chelmsford from the mid-nineteenth to the mid-twentieth century) and their images are well known through various publication, not least Ken's.



Spalding postcards often appear on on-line auction websites and as the ERO has a full set (or at least I assume a full set although I always check) I generally don't buy any that relate to Broomfield as there's no need.

A point in case is the attached image of Fir Lodge on Main Road (opposite the end of School Lane if you're struggling to place it) that appeared for sale recently. I thought I'd have a quick look at it although I had no intention to buy it as I recognised it as having been used in Ken's postcard book (image 27) and I had also seen the original image at ERO.

I saw that it was a used postcard so had a look at what had been the written on the back:

*Dear Dad, The House shown in this photo is our head quarters. There is another H. quarters over this about a mile away. This is where our letters come to. My billet is exactly behind this house - + is the lodge to a gentleman's estate. We turn out in front of this place. Ted*

Very interesting so I had to buy it for this information from a soldier who came though Broomfield during the First World War. Did we know before now that this lost building was being used as a Head Quarters (for a Company?) Did we know that the lodge he mentions (also lost and lodge to Brooklands – located about where the library now is) was used for billeting soldiers? So much information from such a short message but who was the soldier?

The address where the postcard was sent was 61 York Road, West Hartlepool and the recipient ('Dad') a Mr Pailton (well, that's my best guess at the surname). I've had a quick look at Ancestry.co.uk but haven't found a match but as more of a landscape/local historian I'd be happy to hear from any ace family historians out there if someone can find Ted.

A Territorial battalion of the Royal Berkshire Regiment (1/4) was stationed around Broomfield in autumn and winter of 1914 for training purposes before heading off to the Western Front. Was Ted one of the soldiers from this unit? So much still to find out and I'll let you know if I do. And it just goes to show, don't discount a postcard if you recognise the picture – you never know what lurks in the message!

**Neil Wiffen**



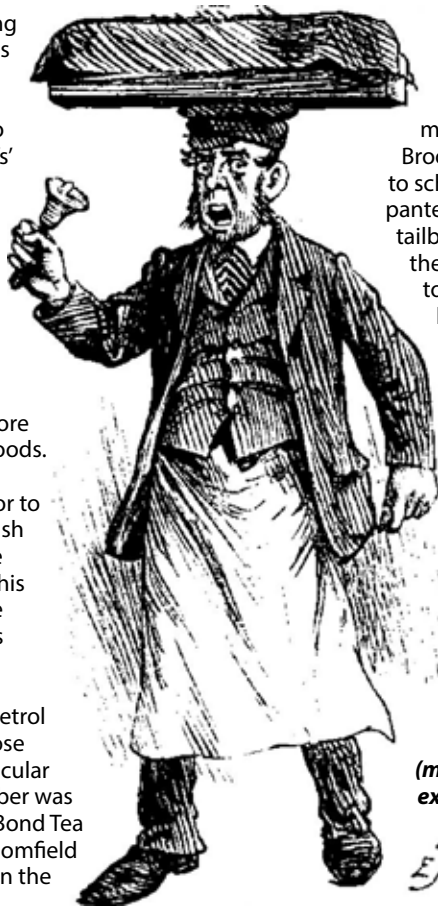
## A look Back-in-Time: Past & Present by Ken Matthams (continued)/...

**It may seem a far cry, from the two gentlemen's unfortunate experience that I told you about last month, to muffins and crumpets but the period is the same.**

We were always eating muffins and crumpets in those days for our Sunday tea. It was a regular occurrence to hear the 'Muffin Man's' bell as he trudged along with his tray of goods covered in white muslin, balanced on his head, wielding his hand bell and crying. 'Muffins! Crumpets! ' I imagine he walked quite a few miles before disposing of all his goods.

Another weekly visitor to the village was the 'Fish Man'. He would arrive each Friday pushing his fish barrow along the dusty road, his goods packed in ice.

There was very few petrol driven vehicles in those days, but one in particular I shall always remember was the little red Brooke Bond Tea van. The driver, a Broomfield man, was seen daily in the Village.



One could always hear it coming along on its solid rubber wheel tyres. Speaking of vehicles reminds me of an incident concerning a Broomfield School boy. On his way to school one day, a large furniture pantechnicon passed him with the tailboard hanging our flat behind the van. "Ah" he thought "a ride to school". So, nothing daunted, he leapt on to the tail board, dangling his legs. Alas, when he wanted to leave the van at School Lane, he realised he was facing the wrong direction to jump off. By the time he had manoeuvred himself in a position to dismount, the van had reached Blasford Hill. Not only had he further than ever to walk to School, he also had a good "ticking off" for being late. In future, he avoided temptation and walked.....

*(maybe this was Ken's own experience?) Ed*

*Extract from issue no. of Broomfield Bulletins 1976*

*Extract from issue no. of Broomfield Bulletins 1976*

*Kate Allen*  
NAILS & BEAUTY

Fully insured and qualified in all treatments

**07592 234 157**

Gel Polish Manicure/Pedicure | Hard Gel Nails  
Acrylic Nails (100s of colours to choose from!)  
Lash Lift and Tint | Classic Lashes  
Eyebrow Wax and Tint | Dermaplaning

**kateallen81@live.co.uk**

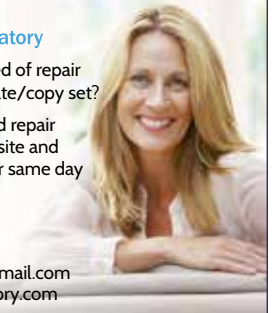
17 Mill Lane, Broomfield, CM1 7BQ

 **RDS**  
Denture Laboratory

Are your dentures in need of repair or do you need a duplicate/copy set?

We can manufacture and repair all types of dentures on site and offer a while-you-wait or same day service. Contact us on:

Tel : 01245 600 757  
Mob: 07796 544 903  
rdsdenturelaboratory@gmail.com  
www.rdsdenturelaboratory.com





## News from Broomfield Parish Church

**This was the moment when the large damaged branch from the Cedar tree finally came down under the expert guidance of a tree surgeon.**



The tree had been showing signs of extreme fatigue for some years. But no tree in a conservation area or a churchyard can just be felled. We have to have tree experts from the City Council and the Diocese of Chelmsford come to assess the possible risk to the public, the health of the whole tree and the visual impact of the tree in the surrounding area. Eventually, on the advice of the tree surgeon, we had to make emergency calls to all the agencies in order that the branch, which was bearing the weight of many other branches, could be removed.

I find this an immensely sad yet powerful picture. This tree has been (and a large part of it remains) a feature of our churchyard. Yet that branch, many tonnes of it, could have caused such destruction and devastation. The fact that it was managed with care, and some of the tree has been saved, is a blessing. We are also deeply grateful for those who, some years ago, realised that this tree was entering the final stage of its life and planted a new Cedar alongside it. That tree is now well established.

The power of nature and God's awesome creation is a key feature in Christian thinking

at the moment. The issues of climate change have never been in the forefront of people's mind so clearly, as we have watched the melting of the polar ice caps and the fires raging through the rain forests and across Australia. Daily in this church we pray that God will guide us in the ways of being better stewards of this planet in order that the whole of creation and humanity can flourish.

Each of us need to make small changes which can make a difference. To this end the Diocese will be running a Lent Course at Chelmsford Cathedral. If you wish to know more, please do check out our website or pick up one of our magazines from the church. We are generally open every Tuesday and Thursday morning and we really enjoy it when people pop in for a chat, a prayer or a cuppa.

Also this spring we will be running Confirmation classes for those who would like to find out more about the Christian faith. These will be held on a Monday evening in St. Leonard's hall. If you would like to find out more, again our website [stmarybroomfield.org](http://stmarybroomfield.org) is a mine of information. Please do let one of the ministry team know if you would like to attend, or just drop us an email to find out more.

We will be having the usual round of Lent and Easter Services, starting with a 10am service on Ash Wednesday (26th February) with the imposition of ashes for anyone who wishes to start Lent off in a prayerful way.

As well as our usual Sunday worship there will be special services on Palm Sunday 10.30am (5th April), Maundy Thursday 7pm (9th April), Good Friday (10th April) 10am with our friends at Broomfield Methodist Church and 2pm Prayers and Reflection at the foot of the cross. Easter Sunday we will have the celebration of light and renewal of baptismal vows along with a wonderful celebration of the resurrection of Jesus on that first Easter morning. If the weather is kind to us we will follow this with an Easter Egg hunt around the churchyard.

We look forward to welcoming you to your parish church this spring.

***With every blessing Carolyn Vicar of Broomfield***



## Royal British Legion Broomfield Branch January 2020

### Do you remember Christmas?

It seems only weeks ago that balancing the lights and baubles was priority one for the tree, ready for festivities to commence.

But hey, we at the RBL had been busy prior to the long awaited festivities; yes it was full steam ahead for the Poppy Appeal. (The Royal Navy is getting mentioned once and that was it!). A dutiful team of RBL members spent many an hour particularly at Morrison's supermarket selling Poppy inspired mementoes and motifs helping to raise over £11800 so far for the Poppy appeal. Well done all.

Returning to the Christmas theme, the social club hosted several opportunities to celebrate including the Silver Band and a Christmas lunchtime social of imbibing, both a real success.

The introduction of a coffee morning on a regular basis has proven to be a great success with the HQ in Saxon Way overflowing with friends, relatives and comrades enjoying the friendly atmosphere; oh and the cakes help too!

The RBL in Broomfield has been transformed by decoration and enhanced facilities at the HQ and the Committee members of both the Branch and Social club work together to make this the place to be for socialising whilst also remembering our commitment to the needs of our serving or retired Servicemen and honouring those promoted to Glory.

Per Adua Ad Adastra

**Dougal Clifford**



### Coffee Morning Broomfield RBL Social Club

10am-12pm Tues 17th March 2020

10am-12pm Tues 21st April 2020

10am-12pm Tues 19th May 2020

**Come and join us for a cup of tea or coffee  
along with a biscuit, scones or cake**

Find us at Broomfield RBL Social Club in Saxon Way  
(road beside Apple petrol station).



THE ROYAL BRITISH  
**LEGION**



## Chelmsford North East Bypass and Beaulieu Station

**Chelmsford is one of the UK's newest cities and plays a vital role in the heart of Essex providing homes, jobs, shopping, healthcare, education, leisure and recreational opportunities.**

As a driver of the regional economy, Chelmsford needs a transport network to match if it is to properly facilitate future development and economic growth.

As a result, Essex County Council, in partnership with the City Council, and in collaboration with Network Rail, is behind a scheme to deliver a North East Bypass of Chelmsford and a new railway station at Beaulieu.

This transformational road and rail upgrade is being delivered with nearly £218m in funding from the Government's Housing Infrastructure Fund, plus £34m of other funding from the South East Local Enterprise Partnership and developer Countryside Zest.

The new 8km bypass, running between the A131 and the A12 at Boreham will be fit for purpose, bypassing residential areas and relieving high levels of traffic congestion in Chelmsford.

The new Beaulieu station, at the southern end of the NE Chelmsford Garden Community, on the Great Eastern Main Line (GEML) from London to Norwich, will relieve crowding at Chelmsford.

It will also act as a transport interchange to encourage sustainable travel by bus, cycle, electric vehicles and on foot.

### Background to the North East Bypass

In 2007, Essex County Council and its partners laid out a long-term plan for a Chelmsford North East Bypass and safeguarded the land. Safeguarding is part of the planning process and helps protect land set aside for infrastructure projects such as this one from being used for other purposes.

In 2008, due to economic challenges and reduced funding for local authorities, the scheme was put on hold. However, the corridor has been safeguarded since then, and updates to the safeguarded corridor were presented in the Draft Local Plan consultation held in early 2018. The updates ensure there

is sufficient space for the scheme and that no land is safeguarded unnecessarily.

The consultation ran for six weeks, from Wednesday, 31 January 2018, and was the last opportunity to comment on the proposal for the safeguarded corridor updates before the process of seeking legal powers to safeguard the land commences.

The proposed bypass would go from Boreham Interchange on the A12 to the Deres Bridge junction on the A131.

### Housing Infrastructure Fund

In March 2019, Essex County Council submitted a Housing Infrastructure Fund bid titled 'Chelmsford North East Bypass and Beaulieu Railway Station' in relation to this project.

This set out how investment into the bypass and the railway station would enable the new development at Beaulieu to reach its full potential. It also demonstrated how the new bypass will help relieve congestion on local roads.

In August 2019 it was announced that the Council had been successful in its bid, receiving £218million to take forward the plans alongside £99million to take forward the A120-A133 Link Road and Rapid Transit System project.



## Bikes for Africa

**A charity who cares for the environment, re-cycling bikes instead of sending them to landfill.**

Across the UK thousands of bikes are thrown away or lie unused in sheds and garages, whilst many people in Africa are forced to walk for hours carrying heavy loads to get to market, school, work and to fetch water and crops.

Enriching the lives of those less fortunate, by giving them the independence of a bike really does change lives. Our bikes provide people with opportunities to gain new skills and sustainable income which enables them to invest in their own projects.

Bikes which may not be suitable to send to Africa are stripped down for spare parts or are repaired and sold to the community here in the UK.

In 2019 the charity received 14,500 bikes at

its Warehouse and since they started in 1998, have sent over 111,000 bikes. Imagine where those bikes might have ended up if they hadn't received them?

Re-Cycle touches the lives of people in the UK, as well as overseas, by providing life skills and social support to a diverse community through our volunteering programme.

If you belong to a group or association and have a guest speakers and would like to hear more about the work Re-Cycle then please email [fundraising@re-cycle.org](mailto:fundraising@re-cycle.org)

If you wish to make a financial donation to the charity or would like to donate a bike then please see our drop off points via our website [www.re-cycle.org](http://www.re-cycle.org)  
**01206 617865**

# Improving lives through bicycle re-use.

Re-Cycle (Bikes to Africa) is a small charity based in Essex who provides unwanted bikes to children and adults living in Africa.

By giving just a small donation you will be helping us to change lives. Donate now [www.re-cycle.org](http://www.re-cycle.org) or for further information email [fundraising@re-cycle.org](mailto:fundraising@re-cycle.org)



Re-Cycle (Bikes to Africa) Unit 8, The Grove Estate, Wormingford, Colchester, Essex, CO6 3AJ. Phone: 01206-617865

Registered Charity No: 1063570 – Company Number 03337853

Follow us @bicyclecharity





## Litter Picking for Duke of Edinburgh award

**For the past 3 months I have been litter picking for Broomfield Parish Council at Angel Meadow for my Bronze Duke of Edinburgh award.**

It has been a good opportunity for me to get out and do something for the local community. The litter I collected over the 12 weeks has been extremely varied. From tubs of chocolate and all the wrappers to smashed glass, general sweets and crisp packets, drinks bottles and dog poo bags in bushes. Each week I filled a black bin bag full of rubbish collected from the MUGA, the footpaths, Centenary Wood and from around the hall.

I think that this has made a difference to the park and for everyone using it. The people that I spoke to whilst I was litter picking were all very pleased that I was taking the time to do it.

**Sam Carradice November 2019**

Thank you Sam – great work keeping Broomfield litter free – we look forward to you continuing your work in February!



## Broomfield Library

**2019 ended with our traditional Christmas Rhymetime, led by Rev. Julie Hardy.**

This was her final rhymetime at Broomfield Library before she moves to her new job in Kelvedon Hatch. We wish her the best of luck and will miss her in the Library!

2020 saw another Love Your Library day across the county. Following our 'Bookopoly' game in December, in February we celebrated STEAM (Science, Technology, Engineering, Arts and Maths) with experiments, a Planetarium and crafts. The next event will be on Saturday 11th April, and we will be planning activities for all ages (adults and children) again.

We have continued to hold events for the children in the school holidays. In February half term we followed the Stick Man through the library as he tried to find his way back home. We will be holding an Easter crafts event on Wednesday 8th April.

Our Community Tea Time has moved to a Monday at 2pm. We hope you can join us for refreshments and a chat.

**Michelle Davis**



# MAKE BROOMFIELD SAFER

**FREE COMMUNITY EVENT**

**BROOMFIELD BRITISH LEGION**

**MONDAY MARCH 16th 7-9pm**

**PREVENTION IS ALWAYS BEST**

## *Reach Every Generation*

An insightful free talk  
to create awareness on

**County Lines (drug running)**

**Gang Recruitment**

**Knife Crime**



**KNOWLEDGE IS POWERFUL : EDUCATE  
YOURSELF AND BE PART OF THE  
SOLUTION TO KEEPING YOURSELF AND  
OUR CHILDREN SAFE IN OUR  
COMMUNITY.**



Photos courtesy of James Thomas [www.jamesthomasphotography.co.uk](http://www.jamesthomasphotography.co.uk)

## **New year, new challenge? Bring on the Big Battle with Helen Rollason Cancer Charity!**

**Helen Rollason Cancer Charity are inviting the brave and courageous to take part in our second Big Battle challenge on Sunday 5th April 2020.**

The 5km course will test your endurance, speed and strength, all in the name of charity.

A personal trainer will escort and encourage groups of participants around the course which will see you take on the famous Nuclear Races obstacles including the 15 lane Zip-wire into water and 20' free-fall Deathslide.

***Have you got the nerve?***

Participants should expect an ultra-muddy and obstacle-loaded course from Nuclear Races who are well known for delivering award winning races with high quality obstacles that will test your fitness as well as your nerve. Held at The Event Village, Parsonage Farm, Ongar Road, Brentwood, opposite the Secret Nuclear Bunker in Kelvedon Hatch; the event is open to individuals and teams aged 13 or over.

Our very first Big Battle saw 48 brave supporters take part raising over £5,000 for the Helen Rollason Cancer Charity!

Our Big Battle challenges all levels of fitness ability and ages, testing courage, determination, teamwork and physical strength. Based on permanent farmland with mud, woods, rivers and lakes, Big Battle pushes participant's limits over a fun combination of big and small obstacles. So expect to enjoy a muddy memorable time, to get wet, dirty and to **#LoveMud** for Helen Rollason Cancer Charity!

Tickets are £50 per person and must be booked in advance as places are limited. Don't delay; book your place today! Call the Fundraising Office on **01245 380719** or visit **[www.helenrollason.org.uk](http://www.helenrollason.org.uk)**

***Holly Butler***  
*Marketing & Communications Co-Ordinator*

# CHES Homeless

## Opening doors to independence



CHES works to relieve homelessness and hardship amongst single adults in Chelmsford and Essex through the provision of support services and temporary accommodation. With increasing numbers of homeless people living on the streets, there is a need for us to provide the service that we do.

**We can only continue to do this with your help!**

Every penny counts and by donating to CHES Homeless you can help unlock a future and provide that key to a door for someone who wants to change their life.

To donate visit [www.cheshomeless.org](http://www.cheshomeless.org)



200 New London Road  
Chelmsford, Essex, CM2 9AB  
Telephone: **01245 281104**



cheshomeless



@cheshomeless





## Broomfield Celebrates

### FRIDAY 8th MAY

3 pm at Royal British Legion Saxon Way 7 pm Bell Ringing at St Marys Church, Broomfield  
To Toast VE Day & Poem of Peace

### SATURDAY 9th MAY

12 – 3 pm Church Green Broomfield (details TBC) 7 pm Royal British Legion Saxon Way  
Street Party (bring your own picnic). Flag waving & entertainment

### SUNDAY 10th MAY

10.30 am St Mary's Church, Broomfield  
V75 Service



# VE DAY

75<sup>TH</sup> ANNIVERSARY

A SHARED MOMENT OF CELEBRATION

8 - 10 MAY 2020

# GUARANTEED PART WORN & NEW TYRES



**PART WORN TYRES**



**NEW TYRES**



**TRACKING**



**CAR TYRES**



**CROSSOVER TYRES**



**4x4 TYRES**



**VAN TYRES**



## PUNCTURE AND DAMAGE TYRES REPAIR SPECIALIST

For details of our **LIFETIME  
GUARANTEE** on part-worn tyres visit:

[www.tyresaversukltd.co.uk](http://www.tyresaversukltd.co.uk)

Unit 4 Navigation Road, Chelmsford CM2 6HE  
Call: 01245 252 626

143 London Rd, Stanford Rivers, Ongar CM5 9PP  
Call: 01277 365 420



Visit us on Facebook



**citizens  
advice**

# Get help applying for Universal Credit

We can help with the early stages  
of a Universal Credit claim, from the  
application through to the first full payment.



Call us for free:

**0800 144 8 444**

Advisers are available 8am to 6pm,  
Monday to Friday.

Get support online or find your nearest face to face  
service at: [citizensadvice.org.uk/helptoclaim](https://citizensadvice.org.uk/helptoclaim)

**Help to Claim** is a dedicated service from Citizens Advice.  
It's free, independent, confidential and impartial.

# Has Your Double Glazing Steamed Up?

Established for over a decade Cloudy2Clear windows have become a leading company for glass replacement. Issues with double glazing can often be gradual and may only be noticed during a clear sunny day or during the winter. A failed glass unit may no longer provide you with the protection you need or be energy efficient. Why not spend a few minutes checking your home to see if you have any failed double glazing? If you act now you can avoid these problems.

Now, you may think you need to replace the

whole window including the frames and all the hardware, however Cloudy2Clear have come up with a simple and cost saving solution... Just replace the glass!!

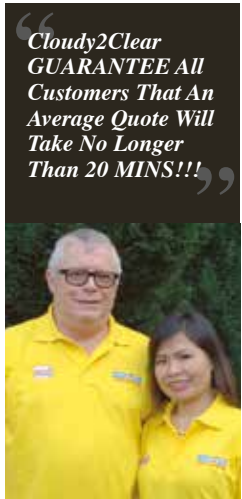
If you see condensation in your windows just visit our website or give us a call on **0800 61 21 118**. We will send out our highly experienced engineers for a free no obligation quote. A **Cloudy2Clear quote takes on average no longer than 20 minutes**. Once the quote is completed, we will sit down with you and explain the problem and tell you how we can fix it.

With years of experience Cloudy2Clear have a wealth of knowledge and are recognised as a Which Trusted Trader, **plus our work is backed by an industry leading 25 year guarantee.**

Cloudy2Clear also replace faulty locks handles and hinges on all windows and doors.

Your friendly local Cloudy2Clear specialist is Chris Miller and he services the Broomfield & Chelmsford areas.

So, if your windows are steamed up, broken or damaged give Chris a call for a free quotation on **0800 61 21 118**.



## Cloudy2Clear Windows... Service With A Smile!

Cloudy2Clear Are A...



**Which? Trusted Trader**

All Glazing Backed By Our  
**25 YEAR GUARANTEE**



Priority Freephone  
**0800 61 21 118**  
[www.cloudy2clear.com](http://www.cloudy2clear.com)

Broken Or Damaged Windows? Faulty Locks, Handles, Hinges?  

# BAYCROFT

Care Homes & Senior Villages



 64 BEDS

 RESIDENTIAL CARE

 NURSING CARE

 DEMENTIA CARE

## LUXURY CARE IN GREAT BADDOW


Baycroft Great Baddow is our second luxury care home, providing expert 24-hour residential, nursing and dementia care.

We are creating homes that feel like home, where you can truly feel at ease. As much thought has been invested into the dining experience, the engaging social activities, the innovative technologies and the high quality facilities as the exemplary standards of care. These elements combined create the comfortable and fulfilling lifestyle you deserve.

**We are dedicated to making a better every day for you and aligning our care and services to your needs.**

MOLRAMS LANE, GREAT BADDOW, ESSEX CM2 7TL

 020 8821 2018

 info@baycroft.co.uk

 baycroft.co.uk

