



# *Broomfield* **TIMES**

Issue 68 | Spring 2022

*News & events from your Parish Council*



# Has Your Double Glazing Steamed Up?

Established for over a decade Cloudy2Clear windows have become a leading company for glass replacement. Issues with double glazing can often be gradual and may only be noticed during a clear sunny day or during the winter. A failed glass unit may no longer provide you with the protection you need or be energy efficient. Why not spend a few minutes checking your home to see if you have any failed double glazing? If you act now you can avoid these problems.

Now, you may think you need to replace the

whole window including the frames and all the hardware, however Cloudy2Clear have come up with a simple and cost saving solution... Just replace the glass!!

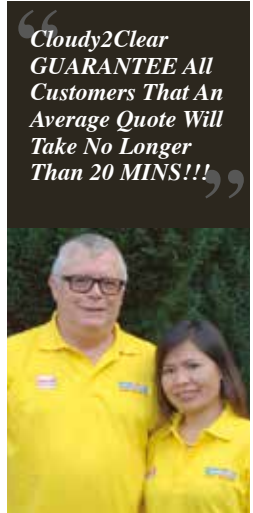
If you see condensation in your windows just visit our website or give us a call on **0800 61 21 118**. We will send out our highly experienced engineers for a free no obligation quote. A **Cloudy2Clear quote takes on average no longer than 20 minutes**. Once the quote is completed, we will sit down with you and explain the problem and tell you how we can fix it.

With years of experience Cloudy2Clear have a wealth of knowledge and are recognised as a Which Trusted Trader, **plus our work is backed by an industry leading 25 year guarantee.**

Cloudy2Clear also replace faulty locks handles and hinges on all windows and doors.

Your friendly local Cloudy2Clear specialist is Chris Miller and he services the Broomfield & Chelmsford areas.

So, if your windows are steamed up, broken or damaged give Chris a call for a free quotation on **0800 61 21 118**.



## Cloudy2Clear Windows... Service With A Smile!

Cloudy2Clear Are A...



Which? Trusted Trader

All Glazing Backed By Our

**25 YEAR GUARANTEE**



Priority Freephone

**0800 61 21 118**

[www.cloudy2clear.com](http://www.cloudy2clear.com)

Broken Or Damaged Windows? Faulty Locks, Handles, Hinges?



# Broomfield TIMES

Welcome to the Spring edition of Broomfield Times

Inside you will find lots of useful information from the Parish Council, Village Hall and other clubs, charities, and societies operating in or around Broomfield.

The Parish Council Office (inside Broomfield Village Hall) has re-opened its doors to the public – please do call in if you need any help, advice, photo copying (small charge), etc. We will be open on Mon – Weds – Fridays 10.30 am to 12.30 pm (subject to staff availability).

You will notice that we have a new Events section – we welcome Donna Hance into her new role as Events and Grant Funding Manager for the Village Hall – please go to her page to see what events are planned!

Thanks to Philip Richards for the cover photo – Spring arriving near Chelmer Valley High School – and also to Diane Herbert for all her hard work proofreading – much appreciated.

Anyone who has an interesting article, photos, information of Broomfield you would like to share in future editions of Broomfield Times – please let me know either by email: [Editor@broomfieldessex.co.uk](mailto:Editor@broomfieldessex.co.uk) or by telephone (01245) 441660 or letter.

Next copy date: 31st May 2022

Happy Spring Broomfield! **Karen Hurrell**

*Whilst Broomfield Times is supported by the Parish Council, the views expressed within it are not necessarily those of the Council. Please note that the Council do not recommend or vet advertisers.*

## PLEASE SUPPORT LOCAL BUSINESSES

A big thank you goes out to all the local businesses that have advertised and supported the Broomfield Times Magazine.

To advertise please call 01843 523030

Published by Community Ad Web Ltd  
[www.communityad.co.uk](http://www.communityad.co.uk)

01843 834160 [info@communityad.co.uk](mailto:info@communityad.co.uk)



Supporting the  
**REBUILD OF BRITAIN**



To view our T&C's, please visit our website

find us on Facebook

## STEVEN REEVE

### DULUX SELECT DECORATOR

Interior ~ Exterior Painting & Decorating  
Wallpapering & Ceramic Tiling

Tel: **01245 441526** Mobile: **07710 295831**  
Email: [stevenreeve1@yahoo.co.uk](mailto:stevenreeve1@yahoo.co.uk)

High Quality Workmanship  
Full Public Liability ~ Free Estimates  
**Recommended & Guaranteed by Dulux**  
Established 1987



### Come home to a clean house

Our professionally trained team of maids will make your home sparkle. We tailor our cleans to your individual needs, schedule and budget.

Arrange your no obligation in home quote today

Emma Brooks

**01245 494003**

[emma.brooks@mollymaid.co.uk](mailto:emma.brooks@mollymaid.co.uk)

[mollymaid.co.uk/locations/brentwood](http://mollymaid.co.uk/locations/brentwood)

★ Trustpilot Excellent



## DANBURY Fencing

For a **FREE** quotation call

**01245 974717**

[www.danburyfencing.com](http://www.danburyfencing.com)

## BEGIN A CAREER IN CARE!



MATCHED WITH CARE  
RECRUITMENT - TRAINING - CONSULTANCY

Vacancies we currently have:

Registered Nurses  
Care Staff  
Support Workers  
Senior Care Staff  
Home Managers  
Domestic Staff

Phone **01843 636188**  
Email [hello@carematchchuk.co.uk](mailto:hello@carematchchuk.co.uk)  
[www.carematchchuk.co.uk](http://www.carematchchuk.co.uk)



# Broomfield Contacts



<b>Broomfield Parish Council Office:</b>	Clerk: Mark Hembury	<a href="mailto:clerk@broomfield-pc.gov.uk">clerk@broomfield-pc.gov.uk</a> Telephone (01245) 441660 158 Main Road Broomfield Chelmsford CM1 7AH
<b>(situated inside Broomfield Village Hall)</b>	Assistant Clerk: Wendy Martin (Village Amenities/Allotments)	<a href="mailto:Wendy.Martin@broomfield-pc.gov.uk">Wendy.Martin@broomfield-pc.gov.uk</a>
	Assistant Clerk: Karen Hurrell (Planning/Neighbourhood Plan) Editor Broomfield Times	<a href="mailto:planning@broomfieldessex.co.uk">planning@broomfieldessex.co.uk</a>  <a href="mailto:editor@broomfieldessex.co.uk">editor@broomfieldessex.co.uk</a>
<b>Broomfield Village Hall</b>	Village Hall Premises Manager: Stuart Jones	01245 443902 <a href="mailto:premisesmanager@broomfieldessex.co.uk">premisesmanager@broomfieldessex.co.uk</a>
	Community Events and Grant Funding Officer: Donna Hance	01245 443902 <a href="mailto:eventsandfunding@broomfieldessex.co.uk">eventsandfunding@broomfieldessex.co.uk</a>
	Bookings Clerk: Steff Smith	<a href="mailto:bookings@broomfieldessex.co.uk">bookings@broomfieldessex.co.uk</a> 01245 443902
	Caretaker: Fitzroy Grant	07919 402862
<b>Broomfield Parish Councillors (contacted via the Clerk)</b>	Chair: Cllr Margaret Bleet Vice Chair: Cllr Ros Mercer Planning: Cllr John Blake Finance: Cllr John Barnes Village Amenities: Cllr Hubble Village Hall: Cllr Faulds Councillors: Wendy Daden; Angela Faulds; David Howell; Gloria Scott; Angela Thomson; Roy Perry	Contact via Parish Office
<b>Chelmsford City Councillors</b>	Cllr Barry Knight  Cllr Wendy Daden Cllr Mike Steel	<a href="mailto:Gbr.knight@chelmsford.gov.uk">Gbr.knight@chelmsford.gov.uk</a> 01245 420045 <a href="mailto:Wendy.daden@chelmsford.gov.uk">Wendy.daden@chelmsford.gov.uk</a> <a href="mailto:Mike.steel@chelmsford.gov.uk">Mike.steel@chelmsford.gov.uk</a>
<b>Essex County Councillors</b>	Cllr Mike Steel	<a href="mailto:cllr.mike.steel@essex.gov.uk">cllr.mike.steel@essex.gov.uk</a>
<b>MP</b>	Kemi Badenoch	<a href="mailto:Kemi.badenoch@mp@parliament.uk">Kemi.badenoch@mp@parliament.uk</a> 020 7219 1943
<b>Chelmsford City Council</b>	Customer Service Centre	01245 606606
<b>Essex County Council</b>	Customer Service Centre	0345 743 0430
<b>Essex Police</b>	Emergency Non-emergency Report a crime online	999 101 or 01245 491 491 <a href="http://www.essex.police.uk/do-it-online/report-a-crime">www.essex.police.uk/do-it-online/report-a-crime</a>  <a href="mailto:chelmsfordcpt@essex.pnn.uk">chelmsfordcpt@essex.pnn.uk</a>



## Useful Contacts

### UK Government:

<https://www.gov.uk/coronavirus-extremely-vulnerable>

### Essex County Council:

[www.essex.gov.uk/topic/coronavirus](http://www.essex.gov.uk/topic/coronavirus)

### Chelmsford City Council:

01245 606606

[www.chelmsford.gov.uk/coronavirus/](http://www.chelmsford.gov.uk/coronavirus/)

### Essex Police:

[www.essex.police.uk/advice/advice-and-information/c19/coronavirus-covid-19/](http://www.essex.police.uk/advice/advice-and-information/c19/coronavirus-covid-19/)

### Broomfield Hospital:

[www.meht.nhs.uk/promotion/coronavirus-covid-19-health-advice/](http://www.meht.nhs.uk/promotion/coronavirus-covid-19-health-advice/)

### Farleigh Hospice:

[www.farleighhospice.org/about-us/news/coronavirus-update](http://www.farleighhospice.org/about-us/news/coronavirus-update)

### Citizens Advice:

[www.citizensadvice.org.uk/health/coronavirus-what-it-means-for-you/](http://www.citizensadvice.org.uk/health/coronavirus-what-it-means-for-you/)

### Essex Dementia Care:

01245 363789

[www.essexdementiacare.org.uk/](http://www.essexdementiacare.org.uk/)

### Alzheimer's Society: Helpline:

0333 150 3456

[www.alzheimers.org.uk/get-support/coronavirus-covid-19](http://www.alzheimers.org.uk/get-support/coronavirus-covid-19)

### Chelmsford Centre for supporting Voluntary Action:

<https://chelmsfordcvcs.org.uk/>

### Broomfield Primary School:

[www.broomfield.essex.sch.uk/coronavirus/](http://www.broomfield.essex.sch.uk/coronavirus/)

### Chelmer Valley High School:

[www.chelmervalleyhighschool.co.uk/](http://www.chelmervalleyhighschool.co.uk/)

### AL-ANON:

Springfield Parish Centre – supports people affected by someone else's drinking

0800 0086 811

[www.al-anonuk.org.uk](http://www.al-anonuk.org.uk)

**BLIXES FARM SHOP**  
**HUMPHREYS & SONS**  
 Est. 1920 TRADITIONAL WHOLESALE BUTCHERS Est. 1920

- Home Produced Beef
- Homemade Sausages & Burgers
- Roasting Meats & more...

**Treat yourself at our <sup>FAST</sup> counter;**

- Homemade Pies
- FRESH Bread, Pastries & Cakes  
(All Made Daily)

And much more!  
 Come and see for yourself!

Open 7:30am - 5pm (Mon-Fri) & 7am-12noon (Sat)

Blixes Farm • Ranks Green • Fairstead • Chelmsford • Essex • CM3 2BH

**Tel: 01245 361 214**  
 f /CHumphreysandSons

**GLIDDON & SON**  
 CHIMNEY SWEEP

Fully insured and qualified with the Guild of Master Sweepers, ensuring the highest standards and safety within your home.

07398 90 80 77  
[chimneysweep-essex.co.uk](http://chimneysweep-essex.co.uk)  
[chimneysweepessex@gmail.com](mailto:chimneysweepessex@gmail.com)

## Able Property Maintenance

Your local firm with over 40 years experience

**All work undertaken.**

**We welcome all insurance work.**

Construction & Refurbishments

Painting & Decorating

Plastering

Electrical

Plumbing

**For a free, no obligation quote, call**

07870 849725 • [ableceilings@gmail.com](mailto:ableceilings@gmail.com)

[www.ableceilings-chelmsford.co.uk](http://www.ableceilings-chelmsford.co.uk)

## Chairman's Chat

### A report on Broomfield Parish Council achievements 2021/2022:

It's been a very busy nine months for the Parish Council and staff during which we have achieved so much. I have listed just a few of our highlights but first I want to thank Staff and Councillors who have worked hard to make this happen.

- Established and updated all essential policies.
- The Parish Council have supported the setup of the Allotment Association.
- We have formed a working group for School Lane Speed Management – we are also hosting speed watch training in March.
- Broomfield Buddies has just been launched.
- Broomfield In Bloom is expanding.
- Our new logo – inspired by the young people of Chelmer Valley High School.
- Communications Committee is now in place.
- Village Attendant has been appointed to the Parish Council.

The Village Hall Staff have also been busy overseeing the new

- Windows fitted in the halls.
- A new ventilation system.
- CCTV covering the Hall and surrounding area.

- Providing busy weekly Coffee Morning, Stay and Play, and Forest School sessions.
- Working together to provide a busy timetable of events for the community for the coming year.
- Community Events and Fundraising Manager has been appointed to the Village Hall.
- Premises Manager has been appointed to the Village Hall.

### What's Next

- Our Website and Newsletter should be going live in April.
- Our Jubilee Celebrations will be in full swing.
- The playground will be resurfaced in the coming weeks – there will be a slight closure but will be ready for spring.
- We will continue to make strong connections with other community groups within Broomfield, supporting where we can.

If you feel you could support any of the community events or have ideas of your own, please let us know – we would love to hear from you.

***Cllr Margaret Bleet***





Your local family run MOT test centre and garage services

- ✓ MOT tests
- ✓ Repairs
- ✓ Servicing
- ✓ Affordable services
- ✓ Motorcycle MOTs
- ✓ Cars & light commercial
- ✓ Bosch quality standards

Call us on: **01245 464 869**  
 Email: **service@slpautos.co.uk**  
**www.slpautos.co.uk**

Visit our Bosch Approved Service Centre at:  
 Unit 10, Boreham Industrial Estate, Waltham Road, Boreham, Chelmsford, Essex CM3 3AW

# COMPUTER SERVICES

*Don't struggle with IT, call the experts!*

- Friendly support direct to your door
- For all your computer needs
- Low rates (no VAT), no call out charge
- Homes and small businesses covered

**01245 426632**  
[www.dhcomputing.co.uk](http://www.dhcomputing.co.uk)  
[help@dhcomputing.co.uk](mailto:help@dhcomputing.co.uk)

# BENCHMARK TREE SERVICES

## TREE SERVICES TAILORED TO YOUR REQUIREMENTS

Chelmsford based, with over 20 years' experience. No job too big or too small. If the council need to be contacted and permission arranged, we'll take care of it.

- Tree surgery • Tree health surveys
- Tree and woodland planting
- Tree and woodland maintenance
- Site clearances

☎ **01245 224006**  
 ✉ [s.whelton@bopenworld.com](mailto:s.whelton@bopenworld.com)  
 🌐 [www.benchmarklandscapeltd.co.uk](http://www.benchmarklandscapeltd.co.uk)

CP CONSTRUCTION PLANT  
CS COMPETENCE SCHEME

IOG

CSCS

UK  
Quality  
Standard  
CORPORATE  
MEMBER



## Results from the Broomfield Parish Council Logo Competition

**We welcome our new logo – see the inset in the front cover.**

We decided it was time for us to have our own logo in line with other Parish Councils. We want to acknowledge the work that we as a Parish Council do and needed to show you where we are and what we are doing.



Councillor Daden introduced us to the Head of Art at Chelmer Valley High School. We provided a short history of Broomfield to the students:

This is an image of an early Anglo-Saxon gold and garnet sword harness pyramid found near Clobbs Row in 1894. The British Museum, where the jewel now rests, gave us permission to use the image. We also shared images of



broom flowers as the origin of the name of the village. We shared images of our famous Church Tower, soon to be renovated as the church was successful in obtaining a grant. We mentioned that in recent surveys you all value the greenness of Broomfield.

So almost 80 students contributed to the competition. We are thrilled that so many students took part. They were very imaginative. We invited three local artists to take part in the judging, along with the Head of Art and the Head Teacher from Chelmer Valley High School. The local artists are Shane Smith, Joan Vine, and Barry Renwick. They will be presenting prizes to the winners.

The final decision on the logo was made by our Website Designer – we have taken elements from a few designs. The final logo certainly incorporates the greenness of Broomfield and the history of our village. Here are some for you to see:



# Broomfield Buddies

**Thank you to the many residents who support Broomfield Parish Council by volunteering.**

You have been named Broomfield Buddies by one of the volunteers. We really appreciate your support and always need more of you.

Ways in which you volunteer: at the coffee mornings, at litter picks, training for Community Speed Watch, on Working Groups such as School Lane, and Jubilee events.

People are coming forward to help the Community in new ways – we are currently getting organised to include their ideas in our busy programme.

If you would like to volunteer and are interested, please contact our Clerk Mark Hembury on **01245 441660** or email: **clerk@broomfield-pc.gov.uk**

**Cllr Margaret Bleet**



## Polly's Field Village is

*now open!*



Polly's Field Village  
BY ABBEYFIELD

### Book a village tour

Our last few spacious apartments are available for purchase, rent or shared ownership. Enjoy a comfortable retirement in a warm, friendly community. Set in a beautiful location and offering a host of social opportunities and leisure facilities, with access to care and support.

For more information call 01376 77 30 20  
or email us: [info@pollysfieldvillage.com](mailto:info@pollysfieldvillage.com)  
[www.pollysfieldvillage.com](http://www.pollysfieldvillage.com)



Abbeyfield  
Making time for older people

The Abbeyfield Braintree, Bocking and Felsted Society



Company Number: 945603. Registered Charity Number: 257782.  
Housing Corporation Number: H0340

## School Lane Working Group

**School Lane working group, consisting of residents and Parish Councillors, has been set up to make School Lane safer.**

Work so far together includes trees around the pedestrian crossing being trimmed back by the school for better visibility and the crossing has been painted by Essex County Council. Thank you to Cllr Lee Scott, Cabinet member for Highways, and our local councillor, Cllr Mike Steel, who made that happen.

You will have started to notice car stickers and wheelie bin stickers about.

We realise that whatever long term actions are taken about speed limits and road narrowing we need to change the attitude of drivers so have started a campaign. Broomfield Primary School are currently drawing up a new travel plan. So we are working together to achieve better safety

We are working on many fronts to improve the safety of School Lane. A plan has gone to the Local Highways Panel for approval and Broomfield Parish Council has agreed to spend £20,000. The plan includes a 20mph zone or street, smiley face signs, and a cycle route. Many of these might take a few years to achieve but the whole group is working very hard to make this happen.

We are also aware that there are concerns for safety in Mill Lane and realise that the Parish Councils will need to raise more money from local taxes to make roads safer. "Local authority



'spending power' – that is, the amount of money local authorities have to spend from government grants, council tax, and business rates – has fallen by 16% since 2010."

**[www.instituteforgovernment.org.uk/explainers/local-government-funding-england](http://www.instituteforgovernment.org.uk/explainers/local-government-funding-england)**

If you would like a wheelie bin sticker and live in School Lane or you would like a car sticker and drive through School Lane please call at the Parish Council office at the Village Hall on Monday, Wednesday and Friday from 10.30 hrs to 12.30 pm.

Watch out for the next phase of the campaign. Please watch your speed in the village.

***Cllr Margaret Bleet***



# TWENTY'S PLENTY in BROOMFIELD



## Broomfield's Senior Lunch Wednesday 23rd February 2022

**The Parish Council were very pleased to be able to run the Seniors' Lunch which was held after a break due to COVID restrictions.**

It was a huge success, completely sold out, and was a lovely way to spend the afternoon. Many people took the trouble to thank us especially – they were very grateful for the opportunity to mix at last, and fun was had by all.

There were a few issues to deal with, including the hob choosing that day to break down and The Fleeting Shadows unable to play due to COVID along with a couple of guests also getting sick – we wish them all well and a speedy recovery.

The caterers Amaze-in-Taste cooked us a delicious meal starting with a glass of sherry, full Christmas dinner with all the trimmings, deserts, coffee, mince pies, and plenty of wine! Thank you to Damon and his team.

Also thanks must go to The Channels Estate, AG Smith Butchers (Boreham), Main Style Hairdressers, Village Hall Coffee Morning Club, Morrison's, and other individual donations to the free raffle, and to Woollards Charity for their donation too.

Extra special thanks to the organisers Donna Hance and Karen Hurrell and the helpers, Julie Ellingford, Sue Hubble (who also exercised our brains with her quiz), and our Clerk Mark Hembury.

***ClIr Margaret Bleet Chair***



[www.flatpackready.co.uk](http://www.flatpackready.co.uk)

**John Nicholson**  
Carpenter  
Painting & Decorating  
Handyman  
Flat Pack Assembly  
Doors Hung  
And More...

**07597 851000**  
**flatpackready@gmail.com**

  
**DIAMOND DENTS**  
PAINLESS DENT REMOVAL

Is your  body perfect?

**DENT REPAIR FROM ONLY £55!**

For a quote or further information  
call Paul on **07779 090572**  
or email **info@diamonddents.co.uk**

 [www.diamonddents.co.uk](http://www.diamonddents.co.uk)

## How To Recycle Locally:

### Guide Dogs for the Blind Glynis & Brian Worboys - 5 Butlers Close Broomfield

- Biscuits packets (not animal biscuit packets or cardboard packets)
- Plastic sliced bread wrappers (not roll packaging)
- Used stamps

*Please leave on front door in a sealed bag tied up (no need to knock).*

### LOCAL SUPERMARKETS:

#### Sainsbury's White Hart Lane/ Tesco Springfield Rd & Princes Rd/ Co-op All Branches:

- Baby, pet food, detergent & cleaning pouches
- Biscuits & chocolate wrapping
- Bread bags
- Bubble wrap
- Cling film
- Cereal packet liners
- Cheese, fish & meat wrapping
- Crisp & sweet bags
- Delivery bags
- Frozen food bags
- Multi-pack wrappers



### Sainsbury's also takes:

- Brita filter cartridges; portable batteries & empty make up containers

### Aldi:

- Batteries

### Morrison's:

- Bread bags; carrier bags; batteries; face masks

### Argos takes:

- Large electrical (non-cooling) appliances; TVs & Displays; small electrical appliances; portable batteries

### John Lewis:

- Gives members a £5 voucher to recycle five empty beauty products

### Little Waltham Doctors Surgery:

- EMPTY Medication blister packs – place in blue bin

### Dunelm: (bin by exit):

- Duvet & cushion covers
- Towels
- Sheets & pillowcases
- Bedding protection
- Fabric tablecloths; runners & placements
- Tea towels
- Fabric aprons
- Curtains
- Throws & blankets

### B & Q (box by exit):

- Small electrical items
- Light bulbs
- Portable Batteries:

### Chelmer Village Opticians:

- Contact lenses

### Boots High Street:

- Contact lenses

**Play in the PARK**  

**Play in the Park with us  
this Easter!**

**FREE** multi-activity sessions  
for children aged 3-11 years.

Each two hour long session is packed full of sports, games, arts and crafts. Selected sessions will also feature special 'Extras' such as; bouncy castles, face painting and a petting zoo!

 [playinthepark@chelmsford.gov.uk](mailto:playinthepark@chelmsford.gov.uk)  01245 606569  [www.facebook.com/playchelmsford](http://www.facebook.com/playchelmsford)  
[www.chelmsford.gov.uk/play](http://www.chelmsford.gov.uk/play)

**BROOMFIELD DATES:**  
Thurs 7<sup>th</sup> April  
10am – 12 noon &  
1 – 3 pm  
General activities of sports,  
games and crafts plus large  
soft play area



To advertise please call  
**01843 523030**  
or email  
**info@communityad.co.uk**

**D.S. EAGLE**  
*High-class family butcher*

**Prime quality beef, pork,  
lamb and poultry plus  
home-made sausages  
and burgers**

 **British Meat**

We specialise in home-cured gammon hams and bacon, produced on the premises in the traditional way. Come and visit our shop and meet our qualified, experienced and friendly staff for helpful advice - you'll be very welcome.

**Tuesday – Friday 9am – 5pm**  
**Saturday – 9am – 4pm | Sundays / Mondays closed**  
**01245 420516    07810 712765**  
9 Wellfield, Writtle, Chelmsford, CM1 3LF

[www.eaglebutchers.co.uk](http://www.eaglebutchers.co.uk)

## Gary K. Steggall



- + Tree Surgery
- + Reductions
- + Felling
- + Hedge Trimming
- + Seasoned Logs
- + Site Clearance
- + Free Estimates
- + Fully Insured
- + **£5m Public Liability**

**07971 696375**  
**01245 496758**

[garysteggall499@btinternet.com](mailto:garysteggall499@btinternet.com)

**City &  
Guilds  
NPTC**

**Environment  
Agency**  
Environmental Agency  
Registered Waste  
Carrier & Dealer

**SSS**  
SCOTTISH SKILLS  
TESTING SERVICE



## Test your knowledge

### SECTION 1 – TRIVIA

1. Which character features as a clergyman in the stories of Robin Hood?
2. What star sign would you be if you were born on 29th October?
3. What type of beetle is sacred in Ancient Egypt?
4. What C describes a sign placed at the beginning of a musical staff indicating the pitch of notes?
5. Which national flags make up the Union Jack?
6. How many days did the Falklands War last:  
a) 52, b) 63, c) 74?
7. Who is the author of 'Peter Rabbit'?
8. What is the name of the longest river in France?
9. Which famous poet wrote 'An Ode to a Nightingale'?
10. What is the largest planet in our solar system?
11. Lateral Epicondylitis is a condition commonly known by what name?
12. What is the softest mineral in the world?
13. What do Jamie Oliver and Jack Nicholson have in common?
14. What is another name for Satan ... beginning with "B"?
15. Who is 5th in line to the throne?
16. What is the largest state in America?
17. What do you call a baby kangaroo?
18. What do you call a group of jellyfish?
19. What is the largest bird of prey in the world?
20. What animal which is alive today is even bigger than a dinosaur?

### SECTION 2 SPORT

1. How many yards are there between the wickets in a game of cricket?
2. How many players are there in a baseball team?
3. How many players are there in a netball team?
4. What was the name of the first Scottish man to be voted European Footballer of the Year?
5. Which sport uses the most muscles in the human body?



6. What is the highest number visible on a dartboard?
7. What sport was Duncan Goodhew famous for?
8. What Olympic Games did Duncan Goodhew win gold and bronze medals for GB?
9. Which horse is the only three-time winner of the Grand National?
10. In tennis, what piece of fruit is found at the top of the men's Wimbledon trophy?

### SECTION 3 HISTORY

1. What relation was Henry VIII to his first wife Catherine of Aragon before he married her?
2. How did Catherine of Aragon die?
3. Which of Henry VIII's wives shared her name with a British actress?
4. Who discovered penicillin?
5. What year did the Titanic sink?
6. What year did King Edward VIII abdicate?
7. What year did Princess Diana die?
8. Which Roman emperor built a gigantic wall across the North East of England in 122 AD?
9. How many times has England won the Eurovision Song contest?

### ANSWERS ON PAGE 34

*Cllr Sue Hubble*

TEST YOUR KNOWLEDGE  
BROOMFIELD

## Broomfield Allotment Site is now being run by Broomfield Allotment Association!

Its newly formed Committee are wasting no time to set improvements in place, starting with water harvesting. It is hoped to receive grant funding to erect two structures to collect rainwater, one at the back of the site and one at the back of the carpark. Both structures will have two 1,000 litre containers to collect the rainwater.

Future Projects – Watch this space!

- a toilet
- tea hut
- regular events
- BBQs and competitions

The site already has two raised beds for those with mobility problems (one currently vacant). A community plot divided into six plots. Contact Donna if you would like to view or want to know more!



At the current time we also have one vacant half plot available. Again, please contact Donna if you would like to view it. Otherwise, should you wish to add your name to our waiting list for a future plot, please contact: Donna Hance – **07729 239613** or Sue Hubble – **07446 116802** or email: **broomfieldallotments1@outlook.com**



**Local Plumbing & Heating Engineers,  
Supporting Local People (and Pets)**

Call 01245 478111 07710 358347  
Visit [lkgdaughters.co.uk](http://lkgdaughters.co.uk)

West Hanningfield Road, Great Baddow, Chelmsford, Essex, CM2 7SY



Plan **your** funeral **your** way

Receive a **£100 discount**  
on a **pre-paid funeral plan** from  
**Hunnaball of Chelmsford**

[funeralplans@hunnaball.co.uk](mailto:funeralplans@hunnaball.co.uk)

**01376 319811**

[www.hunnaball.co.uk](http://www.hunnaball.co.uk)

## Village Amenities Report

### ALLOTMENTS

The Allotment Association has reported that rats have not been seen at the allotment site recently, but inspections will continue in March and whenever necessary thereafter.

### ANGEL MEADOW PLAY

Work on the new surface around the play area is due to commence soon assuming that the night-time temperatures are above 5 degrees. Unfortunately, materials have increased by 40% since we received original quote and the cost will be £1,000 more than expected.

It is disappointing that the joints on the climbing net on the Jolly Rainbow ship have been broken, probably because of misuse. It is either a deliberate act of vandalism or adults climbing it to rescue "stuck" children! However, just a couple of days after last repair it was damaged again. Our new CCTV was able to catch an adult man climbing right over the net! The first repair cost £85. It was agreed that warning signs will be displayed showing a weight restriction for use of the ship.

### BROOMFIELD IN BLOOM

It is hoped that our new Village Attendant will be able to clean and oil the planters currently in place before spring.

### TREES

"Tree for Life" project - Cllr Faulds confirmed that she has delivered six fruit trees for people to plant in gardens and one to the Baby Bereavement Garden. Shortly eight more trees will be planted in the David Smith Field.

An Oak tree has been ordered to be planted on Church Green for the Queen's Platinum Jubilee. As there is some funding available to be spent on Church Green by 31st March 2022, it was agreed to apply for an ornate tree guard to be made and a plaque celebrating the Queen's Platinum Jubilee.

### CHURCH GREEN CONSERVATION AREA

JCM Services have been requested to quote for supplying and installing wooden sleepers to replace the rotting ones already in place and

if Highways approve, we may be able to apply for a grant to carry out the work.

The Committee are also hoping to come up with other enhancements for Church Green which they will then put to residents for their views.

### CENTENARY WOOD

As there are now more dog walkers than ever using Centenary Wood as a "cut through", they have trampled down two large sections of the hedge. Therefore, new "No Dogs" signs are in the process of being made to replace the old ones which were broken. Our contractor has suggested planting a couple of good-sized Hawthorns in the gaps, some wire across and a large tree trunk or something similar to block the gaps until the Hawthorns are established. Quote awaited.

### VILLAGE AMENITIES 1 – 5-YEAR

It was great to report that most of the items on the Plan have now been put in place, the Committee are thinking of new items they can aspire to and if members of the public have ideas which would help to enhance Broomfield, the committee would love to hear them! The basketball hoop will shortly be replaced funded out of the 2022/23 budget.

One item on the Plan not yet carried out was to put musical sensory items in the play area. However, it was suggested that the sensory items be placed in Centenary Wood. More discussion will take place before a decision is made.

Broomfield Primary School and Chelmer Valley High were asked to design some new banners for our regular litter picks. The primary school pupil's designs were displayed at our meeting and everyone present were delighted with all of them, one or two of them will be easier for printing but they all deserve to be displayed for the public to observe the talent we have in Broomfield. Our assistant clerk will be collecting Chelmer Valley High designs when she returns from holiday.



### THREE VILLAGES WALK

The Committee were presented with a proposal from David Thomas (P3) for a self-guided Three Villages walk: Broomfield to Gt Waltham, Gt Waltham to Little Waltham and Little Waltham to Broomfield. Total distance just under 7 miles. David also proposed that we have way markers to show the route if Highways agree and may be the walks and a route map be presented in a leaflet.

The Committee were favourable to David's proposal and decided it may be a good idea to go one step further and link the walk into the Queen's Platinum celebrations by calling the walk something like "Queen Elizabeth II Walk" or "Platinum Way". The printing costs will need to be borne by the Parish Council.

**ClIr Sue Hubble**, Village Amenities Chairman



### Tree For Life

**We are pleased to report that babies Harry, Odhran, Jude, Clementine, Amber, and Molly have had their fruit trees delivered to their gardens now.**

In addition, a further fruit tree was delivered to Broomfield Baby Bereavement Charity for the garden at the Methodist Church.



*Here is a lovely picture of Molly enjoying her new tree.*

It is taking a little longer to source the woodland trees that are being planted for those parents who chose planting in a public place. The trees for Coby, Sebastian, Louis, Peter, Amelia, Finley, Philip, and Wren Quinn will be planted around the cycle track for

them to pedal past in a few years' time! We will give them a name check when their trees arrive.

If anyone would like to share pictures of those babies and trees growing bigger, or pictures from this year's babies, we would be delighted to receive them for the Broomfield Times and social media.

Above is Jack and his peach tree this January. He likes to 'help' to weed the pot it's in, no matter how freezing it is outside!

Wildflowers will be planted around the trees this spring.

**ClIr Angie Faulds**



*Jack and his peach tree this January*

# Broomfield Events

A warm welcome to the new Broomfield Events page.



Over the next few months I will be organising some exciting new events for the Village, the first being our Indoor Boot sale. All 22 tables sold out within days; I now must behave and not buy it all!

June sees the Queen's Platinum Jubilee Celebrations, and this year we are going all out with The Festival of Hope on the 4th June. We will be showcasing some of the Village Hall hirers in the arena and we are working closely with all organisations within Broomfield to bring a fun and exciting celebration. The David Smith field will be turned into craft heaven with many local crafters selling their makes, and there may even be some teaching happening too.

The Big Picnic will take place on the 5th June where we will invite all residents of Broomfield and surrounding areas to bring a picnic, play in our great park, or take a wander down to centenary woods and celebrate the Queen's Jubilee with us.



Whilst all of this is going on, I will still be hosting our weekly Stay and Play sessions.

If you have a little one aged up to five years old, then pop down and see all our new and exciting toys and meet some other mums and

dads... new friendships are often made via our children.

Coffee Morning has seen some busy weeks since Christmas; again new friendships are forming and it's lovely to hear the feedback from everyone each week; we often reminisce on how the village has changed over the years, so if you are free on a Wednesday morning pop in for a cuppa and a natter.



Forest School has been cold, wet, and windy but it hasn't stopped us from having some great fun – we have been building our Bug Hotel, and our climbing and balancing courses, and our mud kitchen are as popular as ever. We still have one or two spaces so if you would like to come along and join in the fun, we would love to see you.



If you have ideas of events or community sessions you would like to see in the village, drop me an email [eventsandfunding@broomfieldessex.co.uk](mailto:eventsandfunding@broomfieldessex.co.uk) or pop into the Village Hall on Monday or Wednesdays - I would love to hear from you.

**Donna Hance**



**Broomfield Parish Council**

**PRESENTS**

**Forest Fridays Stay and Play**

---

Centenary Woods  
Broomfield Village Hall.

Pre Booking essential  
10.00 till 11.30am

Contact: woodlandwarriors20@gmail.com to book



**CAN YOU FIND THE**

**Broomfield Bunny**

**Saturday 16th April**

**EASTER TRAIL**

**BROOMFIELD VILLAGE HALL AND SURROUNDING PARKS**

**11AM - 1PM**

Collect your trail sheet from  
the Village Hall Just £1 entry



*Everyone's Welcome*

9.30 - 11.30 am

**COFFEE MORNING EVERY WEDNESDAY**

*Broomfield Village Hall*

Main Road  
Broomfield



**Broomfield Stay and Play**

PLAY, EXPLORE & GROW.



**BIRTH TO 4**

**WHAT WE OFFER:**

- Fun and Exciting Activities
- Making New Friends
- Healthy Snack

MONDAY TERM TIMES  
9AM - 11.15AM  
BROOMFIELD VILLAGE HALL  
MAIN ROAD

£3 PER CHILD  
£5 PER FAMILY

FOR MORE INFORMATION CALL 07729239613



## Line Dancing in Broomfield Village Hall

Line Dancing classes takes place in Broomfield Village Hall on:  
**Monday evening: 8.30 – 9.30 pm**  
**Tuesday and Thursday mornings: 11am – 12 noon. Cost is £5 per class.**

If you fancy joining our class, just come along – there is no need to pre-book and you will always be welcomed by our great class members. It's great exercise and jolly good fun.

We walk through the steps until we are happy, then dance it. It's as simple as that. With a few laughs and a couple of drinks breaks thrown in, it's an enjoyable hour. First class is free!

Any queries please contact Susan Dore on **07745 126314** or **01245 361388**



# GUARANTEED PART WORN & NEW TYRES



**PART WORN TYRES**



**NEW TYRES**



**TRACKING**



**CAR TYRES**



**CROSSOVER TYRES**



**4x4 TYRES**



**VAN TYRES**




## PUNCTURE AND DAMAGE TYRES REPAIR SPECIALIST

Check our website for details of our **LIFETIME GUARANTEE** on part-worn tyres:

[www.tyresaversukltd.co.uk](http://www.tyresaversukltd.co.uk)

Unit 4 Navigation Road, Chelmsford CM2 6HE  
Call: 01245 252 626

143 London Rd, Stanford Rivers, Ongar CM5 9PP  
Call: 01277 365 420

 Visit us on Facebook





## Village Hall Report

**The Village Hall and MUGA continue to be well used and popular venues.**

Outside hirers provide for a wide range of interests - the halls are available for parties too, and this can be linked with use of the MUGA.

We are delighted to say our COVID numbers restriction in the hall has been removed from 1st March.

There have been storage improvements in the hall which we hope improve the storage of the tables and chairs.

A grant for a cycle shelter has been received from the Essex Association of Local Councils, and this will be installed sometime this spring.

The hall windows have now been replaced and in addition a new ventilation system has been installed to ensure that we now have good ventilation whilst not losing the heat, by virtue of a heat exchange system. This is also installed in the office. Both of these improvements were backed up with grants from the COVID Recovery Fund.

There are still some gaps in our timetable- please contact Steff if you would like to book the hall.



Looking ahead, we are investigating recycling provision and the installation of solar panels. We are also working on improving the microphone system in the hall.

Our new "Trees for Life" will arrive shortly in David Smith field to celebrate this year's babies. We hope to include some photos in the next issue! Wildflowers will shortly be planted around these trees, which will involve the removal of some grass first.

None of this would be possible without the hard work of our hall team – well done to Stuart, Donna, Steff, and Fitz!

***Cllr Angie Faulds, Chair Village Hall Committee***



## Knit And Natter At Broomfield Village Hall

**The Knit and Natter and Craft Afternoons held at Broomfield Village Hall (one Wednesday and one Sunday afternoon a month) go from strength to strength!**

Despite cold days in December and January between 30-40 ladies braved the elements to come along and enjoy a couple of hours meeting and making new and old friends and enjoying quality time together doing what they love the most: Knitting, lace-making, sewing, crochet, card-making and other crafts... and of course nattering!

The usual free raffles are held each month (some prizes were kindly donated by Franklins of Moulsham Street) along with free tea/coffee and biscuits... and in December free mince pies were given out! Prize donations have also been given by Hobbycraft of Chelmsford. And other local businesses have been contacted in the hope they can spare a one or two raffle prizes.

We are very pleased to support the local community and very pleased that many ladies are supporting us. We have booked two meetings per month for the rest of 2022 and all the dates and further details can be found on our website:

**[www.knitandnatterbroomfield.com](http://www.knitandnatterbroomfield.com)**  
or on our facebook page:  
**Knit and Natter, Broomfield, Chelmsford.**

If you would like to come along then please let us know in advance by either emailing us on: **[knitandnatterbroomfield@aol.com](mailto:knitandnatterbroomfield@aol.com)** or you can phone Jan on **01245 512997**. Current restrictions mean we can only accommodate 50 at present - so again we must know in advance if you plan to come along and enjoy the afternoons. We would like to express our thanks to the staff at Broomfield Village Hall (Steff and Donna) for their help and support.

We have changed the time slightly for the Wednesday meetings so that we can accommodate those that are using the local community bus - the two April dates are Sunday April 3 (2.30pm to 4.30pm) and Wednesday April 27 (2pm to 4pm)

The photos show various ladies busy doing projects and a couple of shots of the group working hard





Join us for an afternoon of

## KNIT AND NATTER

ALL OTHER CRAFTS WELCOME

Wednesday 2pm - 4pm	Sunday 2:30pm - 4:30pm
16th March	6 March
27 April	3 April
18 May	8 May
29 June	12 June
27 July	24 July

Broomfield Village Hall, Main Road, Broomfield  
[www.knitandnatterbroomfield.com](http://www.knitandnatterbroomfield.com)  
[knitandnatterbroomfield@aol.com](mailto:knitandnatterbroomfield@aol.com)  
 Or call Jan on 01245 512997



### Essex Ovencleaners

Odour-free, eco-friendly domestic oven cleaning that will have your appliance looking as good as new and **ready to use straight away!**

We clean all kinds of appliances:

- Oven Cleaning
- Hob & Extractor Cleaning
- Microwave Cleaning
- BBQ Cleaning
- Range Oven Cleaning
- Fridge Freezer Cleaning
- Aga Cleaning
- Dishwasher Cleaning



Trading Standards Approved



All Staff are DBS Checked



Safe & Friendly cleaning process



Use your appliance straight away

info@essexovencleaners.co.uk  
 t 01245 451 003 m 07816 762 869  
[www.essexovencleaners.co.uk](http://www.essexovencleaners.co.uk)

## Broomfield Cottage Gardeners' Society

**Broomfield Cottage Gardeners' Society is now gearing up for the year ahead and hoping we can resume a full programme of events.**

The first of these will be the AGM (now past by the time you read this) which was followed by a talk on "Soils" by Ian Mercer. We are hoping to arrange another talk in April so look out for details of that via email or on our website/Facebook pages.

Other events include a charity plant sale on May 15th at the Barn on Broomfield Allotments, flower and produce shows in July and September, and a programme of open gardens in the summer evenings. There will also be a coach trip to Wisley in September. If you have an interest in gardening and would like to join the society, please contact Selina at [bcgsshowsecretary@gmail.com](mailto:bcgsshowsecretary@gmail.com)



It's excellent value at £4 per member (£3 for over 60s) and entitles you to free or reduced entry at our events as well as use of the Barn where you can purchase discounted seeds, compost, and other gardening sundries.



## Broomfield & District U3A – come along and see us!

**By the time you read this, the Broomfield & District U3A will very likely have resumed monthly speaker meetings at Broomfield Village Hall, once again live and in person.**

We have a great line-up of topics scheduled for the next few months, ranging from Charles Darwin to Wildlife Photography to Women's Lives And Work in Eighteenth and Nineteenth Century Essex. For a full list, along with dates and times, have a look at our most recent newsletter, which is online at <https://u3asites.org.uk/broomfield/welcome>

Just click on the 'News' Page and scroll down until you reach the latest issue. At each of these meetings – which take place on the second Wednesday of each month apart from August – there are opportunities to meet old friends and make new ones, have a chat over a cuppa, and enjoy our book and puzzle swap.

In the newsletter you'll also see news and information about the wide range of special interest groups our members convene, ranging from A (Art) to W (Walking), with many more activities in-between.

# u3a

 learn,  
laugh,  
live

However, what happens later in the year may depend on you or perhaps someone you know. We are looking for new members, and – crucially – a sufficient number of volunteers to form a viable organising group (also known as 'the committee'). According to our constitution we need to have at least seven members in this group, and several current members are planning to stand down at the next AGM (October 2022).

Without enough volunteers we will have to wind up our activities, so if you want to see the Broomfield & District U3A continue into 2023 and would like to know more about what's involved, please get in touch at one of our meetings or via our website's 'Contact' page. Please don't delay: we need firm expressions of interest by the end of May.

In the meantime, we look forward to seeing you at the Broomfield Village Hall!



## *Supporting Teenagers and Young Adults with Cancer.*

The Tom Bowdidge Youth Cancer Foundation was formed in 2013 following the death of Tom Bowdidge, who lost his life to a rare form of cancer at just 19 years of age.

The charity provides support to teenagers and young adults (13-24) and their families, who are going through their cancer journey, by providing physical and emotional support and research.

Raising awareness, by giving talks and presentations to various groups and associations is vital to our work. If you would like to book a speaker for your group, please get in touch [lindsay@tombowdidgefoundation.org](mailto:lindsay@tombowdidgefoundation.org)

To make a donation towards the work of the charity visit [www.tombowdidgefoundation.org](http://www.tombowdidgefoundation.org)

9 Firmins Court, West Bergholt, Colchester, Essex, CO6 3BQ - 07771 646654  
Registered charity in England & Wales 1156553  
[www.tombowdidgefoundation.org](http://www.tombowdidgefoundation.org)







## Essex County Council

**What does Essex County Council spend your rates on? An update on next year's ECC budget from your County**

### Councillor Mike Steel:

I have been the Essex County Cllr for the Broomfield and Writtle division for almost a year. Judging by the contents of my inbox, you would think that the only service ECC delivers is related to Highways! Therefore I thought I would reflect on all the services delivered by ECC in the context of next year's budget.

ECC spends a total of £2.014Bn gross, which is partially funded by income (such as planning fees, road permits, etc.) and by specific government grants. This results in a net spend on services of £1.037Bn which has to be funded by the Council tax we all pay, non-domestic rates (business rates), and other government grants. The rates have to be set so that a balanced budget is created – i.e., income and expenditure have to be equal. So what is this £1,037Bn spent on?

By far, the largest amount goes on Adult Social Care, followed by children's services. Quite right too – it is important that vulnerable residents receive the care they need, even though they form a minority of the population. It is very likely that you know someone or have relatives who are the beneficiaries of this service. Or one day, you may need it.

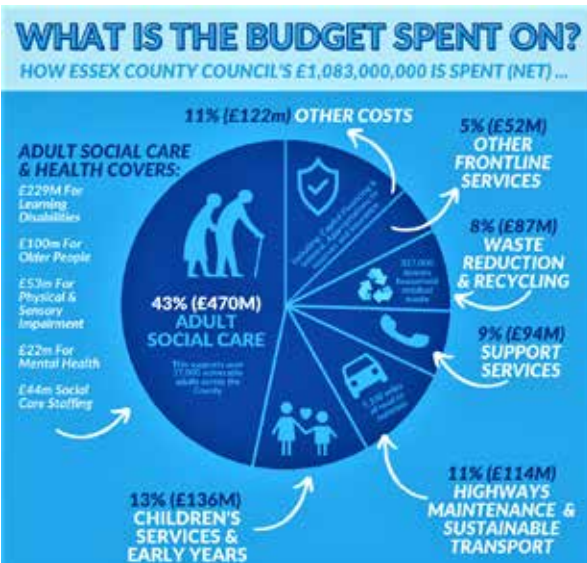
Of course, Highway issues affect everyone which is why my inbox is full of them! But with £114M (11% of the budget) to cover potholes, bridges, car parks, public rights of way, road safety, footpaths, gritting, passenger transport, and home to school transport, it is not surprising that everything doesn't get done as quickly as we like. The priority is to ensure that the roads are safe, so Highways employs a risk assessment process that puts safety maintenance first. Do keep reporting them at [www.essexhighways.org](http://www.essexhighways.org). I have lobbied for more funding, and I am pleased to say that £2M has been added to the existing budget for the coming year.

The council tax rise for the coming year is 4.49%. Over 60% of this will go directly to Adult and Children's Social Care, which has seen significant increase in demands over the last year. The rest will be dedicated to

Climate Change measures, more school places, and Home to School increased transport demands.

We have a stark choice – either we propose an increase or we face unacceptable decisions about reducing services. Ultimately, we are not willing to compromise the level of service residents receive. We are committed to making sure that vulnerable residents receive the care they need, that the roads we travel on remain safe, that we invest in communities, and that our environment becomes greener, cleaner, and healthier.

[cllr.mike.steel@essex.gov.uk](mailto:cllr.mike.steel@essex.gov.uk)





## Chelmsford City Council Report - February 2022 Wendy Daden

**Lots of good news, Chelmsford has been declared one of the cleanest cities and**

**awarded a purple flag, which the "Monster Invasion" initiative contributed to.**

Riverside is seeing record numbers to the ice rink and is pleased to announce the ice show returns for the first time in two years. You can book and enjoy Beauty and the Beast, running over Easter.

Creamfields music festival enjoys its first year in 2022; this will not have any impact on Hylands House events, which now includes an outdoor wedding location to facilitate more functions and generate more revenue for the council.

To celebrate the Queen's Platinum Jubilee, the popular and admired willow tanks will be replaced with a feature by the same artist, Deb Hart.

Flood lighting on the skateboard area in Central Park was requested by the young of Chelmsford and has been successfully implemented, and looking busy over the half term.

CCC is offering help to insulate your home for band D and below; applications must be received by the end of March. Business grants are still available, so please visit the CCC website for more information and perhaps sign up to the business specific newsletter for ongoing help and advice.

You may have noticed work to Tindal Square is underway; some diseased trees have been removed but I am assured more trees will be planted than have been taken out. Please note that ECC are working on cycle networks at the same time so the area is busy.

Finally, the masterplan for Blasford Hill 512 home development (Bloor Homes) is progressing through planning. This is expected to be included as part of Broomfield when the community governance review is completed, creating new parishes, and implementing boundary changes.

**wendy.daden@chelmsford.gov.uk**

## Bus Network Reviews

**As part of a countywide review of the Essex bus network, we would like to get your views on how the local bus network could be improved.**



An online public survey has been launched to get the view of bus users and non-users on the bus network and we would appreciate you publicising this

information within your area. To make the information as relevant as possible, we are most interested in responses which relate to the districts in which the responder travels most often by bus or (if not) where the person travels most often within the county.

**SURVEY CLOSES 25TH MARCH 2022.**



**SAFER / GREENER / HEALTHIER**

Please see the link below:

**Chelmsford - <https://consultations.essex.gov.uk/iptu/bus-network-reviews-chelmsford>**

Thank you for your assistance and if you have any questions please contact:

**[passenger.transport@essex.gov.uk](mailto:passenger.transport@essex.gov.uk)**

Integrated Passenger Transport Unit  
**[www.essex.gov.uk/highways](http://www.essex.gov.uk/highways)**




**Re-Cycle your bicycle**  
Donate your used bike today!

re-cycle  
www.re-cycle.org

Our mission is to send used bikes to rural communities in Africa. Those not suitable maybe stripped down for spare parts or refurbished and sold to the community here in the UK.

For more information about our bike drop off locations and the charity please visit [re-cycle.org](http://re-cycle.org) or call us on **01206 617865**

Registered Charity No: 1063570

@bicyclecharity   

**Sunday 15<sup>th</sup> May 2022**

# RIDE FOR HELEN

Five scenic cycle routes from Hatfield Peverel, Essex  
Choose the distance that's right for you...

6, 15, 30, 50 or 65 miles

- Mobile mechanic support and recovery
- Refreshment stops
- Route signage
- Food/drink packs
- Mentor for finishers
- Weathered coats
- First aid support
- Route maps

Headline sponsor: **Bellway**

Register online [www.rideforhelen.co.uk](http://www.rideforhelen.co.uk)

**Helen Rollason Cancer Charity**

Enabling quality of life while living with cancer

## Pot Shop

### Garden Centre & Pet Supplies

Plants • Wild Bird Care  
Bark • Solar Lights  
Garden Equipment • Décor  
Furniture

Open 7 days a week  
01245 465 895

 Pot Shop Garden Centre  

[www.potshopgardencentre.co.uk](http://www.potshopgardencentre.co.uk)  
Damases Lane Boreham,  
Chelmsford, CM3 3AL

## P SMITH

### PLUMBING & HEATING

- BOILER SERVICES
- BOILER BREAKDOWNS
- FULL INSTALLATIONS
- SYSTEM UPGRADES
- PART L ENERGY EFFICIENT
- UNDER FLOOR HEATING
- LANDLORD REPORTS

**07801 817443**  
**01245 521127**  
smith-paul104@sky.com

[www.psmithplumbingandheating.co.uk](http://www.psmithplumbingandheating.co.uk)  
9 Redmayne Drive, Chelmsford CM2 9XF


 No 219311

## C J Appliances LTD

### DOMESTIC APPLIANCE REPAIRS

WASHING MACHINES • DISHWASHERS  
ELECTRIC COOKERS/OVENS • TUMBLE DRYERS

**07800 819502 • 01245 225472**

Email: [cjappliancesltd@gmail.com](mailto:cjappliancesltd@gmail.com)  
Now accepting card payments   

## 1st Broomfield Scout Group

### WEDNESDAY BEAVER COLONY

The autumn term was a busy one for Wednesday Beavers, attending both the Riffhams and Thriftwood scout campsites for adventurous activities such as the cresta run, peddlerz, and the assault course. The Beavers also hiked to Little Waltham, stopping for a picnic en route. Regular section meetings have included archery, mini crossbows, a very informative talk about the foodbank, plus making a wreath for Remembrance Day and earning the Money Skills badge and the Builder badge.

Christmas activities involved a hike around the city centre admiring the Christmas lights and sampling some chips, plus a game of bowling.

### THURSDAY BEAVER COLONY

The Thursday Beaver Colony programme ran alongside that of the Wednesday Colony plus doing crafts, the Communicator Badge, Chinese New Year activities, and gardening. The Colony plans to enter the District Handicraft competition and the District Swimming Gala, and will be doing an Easter hike before the end of this term. A camp/sleepover is also planned as a joint activity with the Wednesday Colony.

One of the Beavers attained his Bronze Chief Scout Award (the highest award a Beaver can achieve) with a couple of others not far off. Well done, Beavers!

### KANTANKYE CUB PACK

Despite some COVID disruption we have still had some great meetings. Our Sixers and Seconders ran an evening for us out on the field where we played a game in the dark they had devised; we had a Dungeons and Dragons evening, and then another kind of dragons – a Dragons' Den evening when Cubs came up with some interesting inventions and tried, with varying success, to persuade the leaders to "invest". Sadly, the term was cut short due to COVID restrictions, but we finished off with an amazing fencing evening which was enjoyed by all. We also had to cancel both our



Christmas Sleepover and winter indoor camp, but returned after Christmas determined to carry on Scouting! So far this term the Cubs have made dough twists and cooked them on a fire, they've also worked on their map reading skills and put them into use with a street hike around Broomfield.



We are so looking forward to getting back to camping; we have a camp booked in May and then we will be attending the county camp, Mega Camp in June, which is always an amazing experience. As none of our Cubs have yet camped with us, we will also be having a couple of hut sleepovers to build a bit of confidence before the camps.

We still have a limited number of places available for Broomfield children to join us, so please email [broomfieldcubs@live.co.uk](mailto:broomfieldcubs@live.co.uk)



for more information; we would very much welcome new members to the Pack to join in the fun!

### DINIZULU CUB PACK

This term the Dinizulu pack plan to learn about Robert Baden-Powell and the first Scout Camp he held on Brownsea Island in 1907, which was the start of Scouting.



Cubs will be cooking a stir-fry for Chinese New Year as well as learning some interesting facts about China. They will also be making their own camp crockery bags ready for Mega Camp later this year. They will also be attending the District Swimming Gala, the District Handicraft competition, and the "Flash mob" in town.

The Autumn term covered Space, Money Skills, and Mapwork, and planning for a forthcoming hike.

### SCOUT TROOP

After another disrupted term, Scouts have continued to meet trying to retain some normal scouting activities during these disruptive times.

A camp was held at Thriftwood and it was great to get out camping once again. The Scouts cooked all their meals on the fire and took part in some on-site activities. Scouts completed their Chef badge and had a cooking competition, which is always a favourite, and this year saw some unique and tasty puddings. A Creative Challenge Day was held jointly with 26th

Chelmsford Scout Group, and those that attended gained the Challenge award. January

saw some new Scouts join, in addition to several Cubs moving up into the troop, which now stands at 33 young people. Extra adult help is now urgently needed with such a large number in the troop.

### LEADERSHIP/VOLUNTEERS

A new Group Scout Leader (Simon Webb) has been appointed to the Group and we also have a new assistant in Beavers.

In January the new bouldering wall and activities building at the HQ was opened with an event thanking all those people and organisations that had made this possible.

And thanks too to all residents who continue to bring us their wastepaper and cardboard for recycling. This is now our main fundraising activity together with the annual secondhand book sale.

**Roger Cole**



*The Opening of the Bouldering Wall and Activities Building*



**Collectable  
Cars Wanted**  
Pre 1970s, 80s, 90s and even some 00s  
Have you got an old car sitting in your garage?  
Unused and unloved?  
Maybe a non – runner?  
Perhaps a part-completed restoration project?  
Cash Paid!

If the answer is YES then please get in touch!  
Please call/text 07770 666987 for a no obligation chat.  
ksclassics@outlook.com

**30% OFF** a wide range of beauty treatments  
with this ad | valid Mon-Fri | terms & conditions apply



**THE BEAUTY YARD**  
www.thebeautyyard.co.uk  
324 Broomfield Road, Chelmsford  
**01245 440582**

SiennaX Mink



essexdomesticspares

Repairs & Spares • New Appliances  
Refurbished Goods

Same Day Repairs Available  
**01245 258837**  
essexdomestic@gmail.com



**HAVE YOUR  
LEAFLET  
DELIVERED WITH  
THIS MAGAZINE  
FOR  
£48+VAT PER 1,000**

www.acs1st.co.uk **ACS 1st**

Would you like a really good  
**Window Cleaning Service**

Window Frames & Sills, Front & Back doors  
cleaned every time as standard  
We also clean:  
• Solar Panels – Get the most from your investment!  
• Conservatory Roofs • Garage Doors  
• Fascias & Soffits • Cladding & Gutters

**Call us on: 01245 612348 / 07982 429914**

**A SMART SWEEP**  
Licence to sweep  
**07944 698683 | 01245 355540**



Fully licensed  
NACS member

www.asmartssweep.co.uk

**BEGIN A CAREER IN CARE!**



MATCHED WITH CARE  
RECRUITMENT - TRAINING - CONSULTANCY

**Vacancies we currently have:**  
Registered Nurses  
Care Staff  
Support Workers  
Senior Care Staff  
Home Managers  
Domestic Staff

Phone 01843 636188  
Email hello@carematchuk.co.uk  
www.carematchuk.co.uk

Advertise in our new  
**CLASSIFIED** section for  
**£53+VAT** for 3 months.  
Please call  
**01843 523030**

## Explorer Scouts in Broomfield and Walthams

**Broomfield opened a new Explorer Scout Unit, Kraken ESU, at the end of 2019, which was officially given the go-ahead to continue in January 2020.**

The Unit was running a weekly program of activities, and embarked on their first camp to Thriftwood Scout Campsite for the National Pedal Car Olympics weekend. None of us had done anything like this before – and we came third overall! We had a blast!



We had started the unit with five explorers, and by January 2020 we were up to nine. In February 2020, it was the Chelmsford District Swimming Gala – we managed to win that for the Explorer Section, with some help from another unit.

Then lockdown happened, we went onto Zoom, and ran for most of the summer term on Zoom. We were all so pleased to get our risk assessment through to be able to meet up again face to face as we now had 12 Explorers.

We planned activities outside to comply with the current guidelines then, and did a litter pick, hike about Broomfield, did our own version of 'Ready, Steady, Cook' and did a Halloween Activity Day at Thriftwood – then we went back into lockdown again. At that point we took a break until April 2021.



In April this year, the Waltham Explorer Unit, Magna ESU, asked to join us – we weren't sure how many young people would feel comfortable getting back to Scouting after the rough year we'd all experienced, so we said yes

– the first night we all got together, we had 22 Explorers! So we have now joined units as the more the merrier!

The Explorers plan their own term, with activities and skills they want to do, so it could be anything from cooking, fashion show, fencing, hiking, archery, climbing, and first aid.

We have continued to grow in numbers and now have 28 Explorers. We also help with DofE (The Duke of Edinburgh Award) and we now have nine of our Explorers doing their Bronze Award.



In November we ran our first camp in 22 months! We had a fabulous time. The Explorers hiked in to the camp, by train, or by bus; they cooked over open fires, and chilled out and enjoyed being back camping. We

did some activities onsite, more pedal cars, archery, and an assault course, then we went tubing to finish the weekend, which was a special request by one Explorer who was about to turn 18 years old and leave us to start the next chapter of her life. We are always sad to see the Explorers leave us when they turn 18, and we've had three leave just this term.



We hope they will carry on their Scouting adventures as they go off to university or work, and remember the fun they have had being outdoors and learning new skills that will last a lifetime.

We can't help but look forward to more camping and having fun outdoors with our Explorers into 2022 and beyond.

If you are interested in Explorers, our email is **Krakenesu@gmail.com**  
**Kraken & Magna Leaders**

## Mid & South Essex Hospitals Charity

**£20,000 donation from Essex charity 'The Christine Willett Trust' funds innovative medical equipment for the treatment of cancer patients at Broomfield Hospital.**

The generous donation received from The Christine Willett Trust has provided Broomfield Hospital with four AccuVein devices to help in the treatment of cancer patients.

Lisa Villiers, Macmillan Nurse Consultant Chemotherapy, said: "We are immensely grateful to The Christine Willett Trust for so generously purchasing this equipment for us. The benefits of this technology assist nurses with finding the best veins for IV starts and blood draws, and is particularly beneficial in identifying difficult or poor venous access so reducing unsuccessful insertion attempts making sure the patient is as pain free as possible – we can't thank Colin and the other Trustees enough!"

The AccuVein is a handheld portable device used to reveal veins by illuminating them on the surface of the patient's skin. The device works by using proprietary vein visualisation technology that shines an infrared light on the patient's skin. It can identify veins as small as a human hair! No calibration, adjustment, or preventative maintenance is necessary and it works at four or more inches from the skin's surface. It shows veins in real time so the device can accommodate patient and clinician movement.

The Christine Willett Trust was set up in memory of Mrs Willett in 1993 by her husband Colin, who vowed to raise £20,000 every year after his wife Christine lost her battle with breast cancer. The money is used to buy equipment for the treatment of cancer for six local Essex hospitals on a rota basis. This year it was the turn of Broomfield Hospital to receive this generous donation to help in the treatment of cancer patients in Essex.



### CHELMSFORD MARKETS

Over 55 independent stores combine to create exciting shopping moments of magical finds and essential must haves. Visit [chelmsfordforyou.co.uk](http://chelmsfordforyou.co.uk) and click 'discover' to see more and meet the faces of Chelmsford Markets!







- Manufacturers And Installers
- Celebrating 19 Years Of Trading
- Friendly, Professional Staff
- High Security Products
- 10 Year Guarantee

**TRITEC**  
**WINDOWS Ltd**

- Doors •
- Windows •
- Lantern Roofs •
- Conservatories •
- Bi-Folding Doors •
- Composite Doors •

Tel: 01245 248066

Email: [sales@tritecwindows.co.uk](mailto:sales@tritecwindows.co.uk)

Website: [www.tritecwindows.co.uk](http://www.tritecwindows.co.uk)



Unit 6, Montpeliers Farm, Margaretting Road, Writtle, Chelmsford CM1 3PJ

## Friends at Broomfield Hospital

Here is the newly-completed Staff Room for the Blood Sciences Staff which the Friends donated £7,500 to refurbish.



Volunteers, Barbara Coupe and Carol Haensel with just some of the wrapped presents donated by the Friends for patients who are in hospital over Christmas. Nearly 300 hundred



presents were donated over eight wards to cheer up those in hospital over the Christmas period; they included toiletries, sweets, biscuits, and puzzle books.

**Friends**  
at Broomfield Hospital

# COFFEE MORNING

With homemade cakes  
EVERYONE WELCOME



## Broomfield British Legion

Saxon Way, Broomfield. CM1 7YA  
(road beside Apple petrol station)

**10:00am-12:00pm**  
**Tuesday 19th April 2022**  
**Tuesday 17th May 2022**  
**Tuesday 21st June 2022**

All cakes & unlimited drinks only £1 each

All proceeds go to:

**POPPY APPEAL**



### Answers to Quiz -

#### Section 1

1. Friar Tuck
2. Scorpio
3. Scarab Dung Beetle
4. Clef
5. The crosses of St George, St Patrick and St Andrew
6. C) 74 days
7. Beatrix Potter
8. Loire
9. John Keats
10. Jupiter
11. Tennis Elbow
12. Talc
13. They both have daughters named "Honey"
14. Beelzebub
15. Louis
16. Alaska
17. Joey
18. Smack
19. Condor (Andean)
20. Blue Whale

#### Section 2 - Sport

1. Twenty-two
2. Nine
3. Seven
4. Denis Law
5. Swimming
6. Twenty
7. Swimming
8. Summer 1980 - Moscow
9. Red Rum
10. Pineapple

#### Section 3 - History

1. Brother-in-Law
2. Cancer in January 1536
3. Jane Seymour
4. Sir Alexander Fleming
5. 1912
6. December 1936
7. 31st August 1997
8. Hadrian
9. 5 times



# Highwood Landscapes & Purrfect Paving



**DON'T DELAY...CALL TODAY!**

**WE WON'T BE BEATEN ON PRICE**

**ALL TREE WORK UNDERTAKEN**

- Trees • Pruning • Hedge Trimming • Roots Removed •
- Topping & Rotovating • Turfing • Fencing • Garden Design •
- Decking • Patios • Block Paving • Drives • Tar & Shingle • Artificial Lawns •

### PROPERTY MAINTENANCE

- Roofing • Chimney Repairs • Building Work • Flat Roofs •
- Fascias & Soffits • Jetwashing • Rubbish Removal/Waste Carrier Licence •

**WASTE CARRIER • DRAINING SOLUTIONS SPECIALIST**

**REVITALISE YOUR PATIO / DRIVE JET WASHING AND RE-SEALING**

**01245 422 804 | 07711 606 561**

**www.highwoodlandscapes.co.uk**

Free written quotes & advice | 10 year guarantee on all work | 35 years of experience  
Unit 1, The Paddocks, Highwood, Chelmsford, CM1 3PU • email [info@highwoodlandscapes.co.uk](mailto:info@highwoodlandscapes.co.uk)

# LIVING PORTRAITS

GROUP LTD

LEADING SPECIALISTS IN PET PORTRAITS



07836 243227 / 01376 342735  
mike@livingportraits.co.uk  
www.livingportraits.co.uk

## WHO ARE WE?

Living Portraits are the dog and equine photographic portrait specialists, which can include your friends & family if interested. We create unique, stunning works of art.

## WHERE WILL THE PHOTO SHOOT TAKE PLACE?

We can suggest a location for the shoot or we can meet at a location of your choice.

## WHEN WILL THE PHOTO SHOOT BE?

We shoot all year round and in most weather conditions, apart from rain! You will have up to 12 months from the date of paying your booking fee\* to book your session and 6 months for gift vouchers.

## THE CHOICE IS YOURS

You will be able to view all of the images immediately after the shoot so there is no need to wait for another appointment to see your photos! You are not obliged to buy any of the images if you don't want to, you only pay for what you order.

\*non refundable



**It's time to make an LPA.** There is a common misconception that Lasting Powers of Attorney only need to be put in place when an individual gets older. In fact, it is always wise to put LPAs in place earlier in life. By doing so, you will gain peace of mind that your affairs – both financial and health – can be looked after if you are ever unable to do so. You will also be ensuring that your loved ones are not left in an impossible position, unable to deal with your affairs, if the worst should happen.

**Contact us today to protect yourself and your loved ones.**  
**Legal advice with a conscience.**



FISHER  
JONES  
GREENWOOD  
SOLICITORS

Fisher Jones Greenwood LLP,  
16 Baddow Road, Chelmsford, CM2 0DG  
Offices across Essex and London

**01245 890110**  
www.fjg.co.uk  
enquiry@fjg.co.uk



## St Mary with St Leonard Church Broomfield

**We invite you to join us in church on  
Saturday April 30th at 2pm for the Project  
Rutherford Launch Event!**

*"An historic wartime fresco as centrepiece to a  
heritage project for learning, conservation, and  
well-being."*

Come and see the 1941 Rosemary Rutherford  
fresco in the church tower and hear how this  
moving piece of church art came into being.  
Learn something too about this little-known  
Broomfield artist, her war art, and her stained-  
glass windows.

Our architect's drawings will be there for you  
to see the plans for the repairs to the 15th  
century spire and the 12th century tower,  
which will begin in June 2022. Hear how we  
hope to defeat the woodpeckers and the  
weather, and conserve our parish church  
in all its beauty for the next generation of  
Broomfield residents.

Refreshments  
will be  
available and  
there will be  
opportunities  
to find out  
more about  
this exciting  
project and  
how you and  
your family can  
get involved.

This is a  
project for all  
the people of  
Broomfield  
generously  
supported by the  
National Lottery  
Heritage Fund.



For further details please contact Revd Diana  
Garfield [dianagarfield@hotmail.com](mailto:dianagarfield@hotmail.com) or  
**01245 443205.**

BROOMFIELD  
PARISH CHURCH

**MOTHERING SUNDAY  
FAMILY SERVICE**

WITH DISTRIBUTION OF FLOWERS  
27TH MARCH 9.30AM  
ALL ARE WELCOME

**BROOMFIELD PARISH CHURCH**

EASTER SUNDAY 17TH APRIL

6.30AM SUNRISE SERVICE  
IN THE CHURCHYARD

9.30AM EUCHARIST  
IN CHURCH

5.30PM ECO CHURCH  
EASTER EGG HUNT  
IN CHURCHYARD

Happy  
Easter

# AL-ANON FAMILY GROUPS UK & EIRE

## Who is Al-Anon Family Groups?

Al-Anon Family Groups UK & Eire is there for anyone whose life is or has been affected by someone else's drinking.

## Who is it for?

Many people come through our doors for help with coping with a problem drinker. They include close and distant relatives, friends, and colleagues. Your anonymity protected at all times.

## Getting help from Al Anon

Many of our members took their first step towards a better life when they decided to attend an Al-Anon Family Groups meeting. There are over 700 meetings across the UK & Eire.

There are no dues for membership as each group is fully self-supporting, relying only on voluntary contributions.

## How do I get help?

By contacting our helpline.

Our free, confidential helpline is available every day of the year (even on Christmas Day!) from 10am to 10pm. Please call

**0800 0086 811.**

Our friendly helpline volunteers, who are all Al-Anon members, are available 365 days a year. Alternatively you can visit our website:

**[www.al-anonuk.org.uk](http://www.al-anonuk.org.uk)**



**LEN'S LAWMOWERS**  
& Garden Machinery Services

**Your one-stop shop for garden machinery**

Over 100 machines on display  
Mower servicing & repair  
Collection & delivery  
FREE with a service

Unit 16 Reeds Farm  
(off main Roxwell Road)  
A1060, Roxwell, Writtle  
Chelmsford CM1 3ST  
OPEN 6 DAYS A WEEK  
(subject to seasonal change)

[www.lens-lawnmowers.co.uk](http://www.lens-lawnmowers.co.uk) 01245 422571

Main dealer & stockist for **HAYTER**  
We also stock **Mountfield** **RYDEX** **AL-KO** **ALCANTAR** **ALFA** **ALFA**

[WWW.GOGREENLANDSCAPES.CO.UK](http://WWW.GOGREENLANDSCAPES.CO.UK) FENCING & CONTRACT SPECIALISTS

01371 821950 **Go Green** 07710411844

We are a family run business that specialises in all types of fencing, including domestic (decorative, boundary or security), commercial and stock fencing. Contact our team now for a no obligation quotation. We cover all of Essex and East Anglia.

[info@gogreenlandscapes.co.uk](mailto:info@gogreenlandscapes.co.uk)

**homesecure**  
solutions Limited

Roller shutter garage doors  
Roller shutters – electric and manually operated  
All made to measure, in a variety of colours  
Repair service for damaged shutters  
We will remove your old door

01245 917 536 • 07929 403 988  
[www.homesecuresolutions.co.uk](http://www.homesecuresolutions.co.uk)  
[info@homesecuresolutions.co.uk](mailto:info@homesecuresolutions.co.uk)

037



# BROOMFIELD FOOTBALL CLUB

A charitable incorporated organisation registered with the Charities Commission



CHARTERED STANDARD CLUB

## Broomfield Football Club Info / Upcoming Events

**Welcome to Broomfield Football Club. The club was established in 1905 and runs teams for all ages.**



Our aim is to provide a structured Football Club that offers all players steady development as they progress through the age groups.

Along with the boys' football, we now

have a very successful girls' section which is currently run by Paul Goss and his team of coaches.

Lee Sterland started the girls' section five years ago and we now have over 160 girls connected to the club. 5 to 11-year-olds enter the Weetabix Wildcats' section and then form teams. We have teams from u9 to u15, and look to provide a pathway into Ladies Football.



Recently we have become a 'sister club' with West Ham Women FC, which has meant the girls can go to and see the women's games and other special events. In fact, four of our girls have just visited the women at their training ground, meeting the players and watching them train, and had a tour of the facilities.

If you would like to try football, contact us at: [www.broomfieldgirlsfc@btinternet.com](mailto:www.broomfieldgirlsfc@btinternet.com)



Broomfield FC also hold many events at the club alongside football. Recently we held a celebration in honour of our oldest member 'Uncle John' and his 90th birthday on Saturday 12th February where lots of friends

and members who knew him came along to celebrate.

### BROOMFIELD FC UP-COMING EVENTS:

#### QUEENS JUBILEE WEEKEND

Sunday 5th June 'Street Party Style' Celebration with Union Jack flags and refreshments!

#### BROOMFIELD FC BOYS FUNDAY TOURNAMENT EVENT

Sat 25th – Sun 26th June

#### BROOMFIELD FC GIRLS FUNDAY TOURNAMENT EVENT

2ND – 3RD July

#### FIREWORKS DISPLAY

(note the date) Sat 5th November TBC

We hope to see you at Broomfield FC on the behalf of BFC Community Committee.

Please click on website for any info and general enquiries.

[Fcbroomfield@gmail.com](mailto:Fcbroomfield@gmail.com)

[www.broomfieldfc.com](http://www.broomfieldfc.com)



BROOMFIELD F.C. Est. 1905





**2 for 1  
TUESDAY**



**CHANNELS**

— Bar & Brasserie —



**ChanThai  
WEDNESDAY**



Our 2 for 1 menu features a choice of family favourites, we also offer a children's menu.

**Tuesdays 12-3pm & 5.30-8.30pm**



Guest Chef Pim and her authentic Thai food, crafted with the finest ingredients.

**Wednesdays 5.30-8.30pm**

**The ultimate destination bar and restaurant in Chelmsford. Tel: 01245 440 005**

**BOOK ONLINE AT: [channelstate.co.uk](http://channelstate.co.uk)**

Channels, Pratts Farm Lane East, Little Waltham, Chelmsford CM3 3PT  
(Entrance by the Park & Ride)



# NORDIC TIMBER LTD

## TIMBER & FENCING SUPPLIER

### Decking

32mm x 140mm

Lengths 3.0m, 3.6m or 4.8m

### Treated Essex Board

Black, Green or Brown

175mm x 4.8m

### Treated Timber C24

100mm x 50mm x 4.8m

150mm x 50mm x 4.8m

### New Sleepers – Brown / Green

240mm x 120mm x 2.4m

200mm x 100mm x 2.4m

## WE HAVE A FULL STOCK OF:

- |                            |                         |
|----------------------------|-------------------------|
| Close Board Fence Panels   | Waney Fence Panels      |
| Square Trellis             | Picket Fence Panels     |
| Feather Edge Gates         | Tongue & Groove Gates   |
| Brown Treated Timber Posts | Met Posts               |
| Graded Timber              | Plywood                 |
| MDF                        | Insulation Boards       |
| Nails and Screws           | Joist and Jiffy Hangers |

**SPECIALISTS IN FENCING, TRELIS, POSTS AND DECKING, GRADED TIMBER AND PLYWOOD**

**• CHEAPEST AROUND • PLEASE PHONE FOR A QUOTE**

**VISIT OUR YARD AND YOU WILL NOT BE DISAPPOINTED**

**Unit 1 Bulldog Works, Boars Tye Road, Silver End, Witham CM8 3QE**

**T: 01376 584902**

**Open: Monday to Friday 7:30am to 4:30pm & Saturday 7:00am to 12:30pm**